

Ecological site R026XF057CA Ashy Shallow Loam 14-16 P.Z.

Last updated: 4/10/2024
Accessed: 05/04/2024

General information

Provisional. A provisional ecological site description has undergone quality control and quality assurance review. It contains a working state and transition model and enough information to identify the ecological site.

MLRA notes

Major Land Resource Area (MLRA): 026X—Carson Basin and Mountains

The area lies within western Nevada and eastern California, with about 69 percent being within Nevada, and 31 percent being within California. Almost all this area is in the Great Basin Section of the Basin and Range Province of the Intermontane Plateaus. Isolated north-south trending mountain ranges are separated by aggraded desert plains. The mountains are uplifted fault blocks with steep side slopes. Most of the valleys are drained by three major rivers flowing east across this MLRA. A narrow strip along the western border of the area is in the Sierra Nevada Section of the Cascade-Sierra Mountains Province of the Pacific Mountain System. The Sierra Nevada Mountains are primarily a large fault block that has been uplifted with a dominant tilt to the west. This structure leaves an impressive wall of mountains directly west of this area. This helps create a rain shadow affect to MLRA 26. Parts of this eastern face, but mostly just the foothills, mark the western boundary of this area. Elevations range from about 3,806 feet (1,160 meters) on the west shore of Pyramid Lake to 11,653 feet (3,552 meters) on the summit of Mount Patterson in the Sweetwater Mountains.

Valley areas are dominantly composed of Quaternary alluvial deposits with Quaternary playa or alluvial flat deposits often occupying the lowest valley bottoms in the internally drained valleys, and river deposited alluvium being dominant in externally drained valleys. Hills and mountains are dominantly Tertiary andesitic flows, breccias, ash flow tuffs, rhyolite tuffs or granodioritic rocks. Quaternary basalt flows are present in lesser amounts, and Jurassic and Triassic limestone and shale, and Precambrian limestone and dolomite are also present in very limited amounts. Also of limited extent are glacial till deposits along the east flank of the Sierra Nevada Mountains, the result of alpine glaciation.

The average annual precipitation in this area is 5 to 36 inches (125 to 915 millimeters), increasing with elevation. Most of the rainfall occurs as high-intensity, convective storms in spring and autumn. Precipitation is mostly snow in winter. Summers are dry. The average annual temperature is 37 to 54 degrees F (3 to 12 degrees C). The freeze-free period averages 115 days and ranges from 40 to 195 days, decreasing in length with elevation.

The dominant soil orders in this MLRA are Aridisols and Mollisols. The soils in the area dominantly have a mesic soil temperature regime, an aridic or xeric soil moisture regime, and mixed or smectitic mineralogy. They generally are well drained, are clayey or loamy and commonly skeletal, and are very shallow to moderately deep.

This area supports shrub-grass vegetation characterized by big sagebrush. Low sagebrush and Lahontan sagebrush occur on some soils. Antelope bitterbrush, squirreltail, desert needlegrass, Thurber needlegrass, and Indian ricegrass are important associated plants. Green ephedra, Sandberg bluegrass, Anderson peachbrush, and several forb species also are common. Juniper-pinyon woodland is typical on mountain slopes. Jeffrey pine, lodgepole pine, white fir, and manzanita grow on the highest mountain slopes. Shadscale is the typical plant in the drier parts of the area. Sedges, rushes, and moisture-loving grasses grow on the wettest parts of the wet flood plains and terraces. Basin wildrye, alkali sacaton, saltgrass, buffaloberry, black greasewood, and rubber rabbitbrush grow on the drier sites that have a high concentration of salts.

Some of the major wildlife species in this area are mule deer, coyote, beaver, muskrat, jackrabbit, cottontail, raptors, pheasant, chukar, blue grouse, mountain quail, and mourning dove. The species of fish in the area include trout and catfish. The Lahontan cutthroat trout in the Truckee River is a threatened and endangered species.

LRU notes

The Bodie Hills LRU straddles the California-Nevada state boundary, just north of Mono Lake. The area is underlain by late Miocene age volcanic fields with upper Miocene and Pliocene sedimentary deposits over top. The youngest faults in the area are north and north-east striking. Extensive zones of hydrothermally altered rocks and large mineral deposits, including gold and silver rich veins, formed during hydrothermally active periods of the Miocene (John et al. 2015). A primary distinguishing factor between the Bodie Hills and other hills in MLRA 26 is the dominance of volcanic parent material. Elevations range from 2170 to 2650 meters and slopes typically range from 5 to 35 percent. FFD range from 75-105.

Ecological site concept

The Ashy Shallow Loam 14-16 P.Z. site occurs on lower mountain sideslopes. The soils are shallow and well drained formed from colluvium and residuum derived from andesite or tuff breccia. The dominant vegetation is mountain big sagebrush (*Artemisia tridentata* spp. *vaseyana*), bitterbrush (*Purshia tridentata*), western needlegrass (*Achnatherum occidentale* spp. *occidentale*), and prairie Junegrass (*Koeleria macrantha*).

Associated sites

R026XF060CA	Ashy Claypan 12-14 P.Z.
R026XF064CA	Granitic Upland 12-14 P.Z.
R026XY105NV	GRAVELLY LOAMY SLOPE 14-16 P.Z.
R026XY108NV	ASHY SLOPE 14-16 P.Z.

Similar sites

R026XY111NV	SHALLOW LOAM 12-14 P.Z. SHALLOW LOAM 12-14" [ACTH7 dominant grass]
-------------	--

Table 1. Dominant plant species

Tree	Not specified
Shrub	(1) <i>Artemisia tridentata</i> spp. <i>vaseyana</i> (2) <i>Purshia tridentata</i>
Herbaceous	(1) <i>Achnatherum occidentale</i> spp. <i>occidentale</i> (2) <i>Koeleria macrantha</i>

Physiographic features

The Ashy Shallow Loam 14-16 P.Z. site occurs on lower mountain side slopes. Slopes range from 4 to 50 percent but are typically 15 to 30 percent. Elevations are 6600 to 9500 feet.

Table 2. Representative physiographic features

Landforms	(1) Mountain
Elevation	6,600–9,500 ft
Slope	15–30%

Climatic features

The climate on this site is subhumid-continental, characterized by cold, moist winters, and cool dry summers.

Average annual precipitation is 14 to 16 inches. Mean annual air temperature is 42 to 45 degrees F. The average growing season is about 30 to 80 days.

Table 3. Representative climatic features

Frost-free period (characteristic range)	
Freeze-free period (characteristic range)	
Precipitation total (characteristic range)	14-16 in
Frost-free period (average)	80 days
Freeze-free period (average)	
Precipitation total (average)	16 in

Influencing water features

There are no influencing water features associated with this site.

Soil features

The soils in this site are shallow and well drained formed from colluvium and residuum derived from andesite or tuff breccia with additions of volcanic ash. These soils have a low available water capacity. A mollic epipedon occurs from the soil surface to 8 to 16 inches. The soil profile typically has significant amounts of volcanic glass in the soil profile. Inherent soil fertility is high, but because of the shallow rooting depth productivity and plant density are reduced. Surface gravel, cobbles or stones provide a stabilizing affect on surface erosion. Soils series correlated to this ecological site include Adamatt, Epvip, Quartzhill, and Rancheria.

Table 4. Representative soil features

Parent material	(1) Colluvium–andesite (2) Colluvium–tuff breccia (3) Residuum–andesite (4) Residuum–tuff breccia (5) Volcanic ash (6) Eolian deposits
Surface texture	(1) Very gravelly, ashy fine sandy loam
Family particle size	(1) Ashy-skeletal
Drainage class	Well drained
Permeability class	Moderately slow to moderately rapid
Depth to restrictive layer	14–20 in
Soil depth	14–20 in
Surface fragment cover <=3"	25–43%
Surface fragment cover >3"	4–10%
Available water capacity (Depth not specified)	2.4–3.6 in
Subsurface fragment volume <=3" (Depth not specified)	36–66%
Subsurface fragment volume >3" (Depth not specified)	1–15%

Ecological dynamics

Where management results in abusive livestock and/or feral horse use, big sagebrush, and Douglas' rabbitbrush increase as perennial bunchgrasses decline. Utah juniper and singleleaf pinyon readily invade on this site where it

occurs adjacent to these woodland types. When Utah juniper and singleleaf pinyon occupy this site, these trees compete with other species for available light, moisture and nutrients.

Fire Ecology:

Presettlement fire return intervals in mountain big sagebrush communities varied from 15 to 25 years. Plants are readily killed in all seasons, even light severity fires.

Mountain big sagebrush is highly susceptible to injury from fire. It is often top-killed by fire and will not resprout. Presettlement fire return intervals for antelope bitterbrush communities range from 15 to 25 years. Season of burning and environmental conditions have a large impact on antelope bitterbrush ability to survive fire and sprout. Antelope bitterbrush is considered a weak sprouter and is often killed by summer or fall fire. Antelope bitterbrush in some areas may sprout after light-severity spring fire. High fuel consumptions increase antelope bitterbrush mortality and therefore favors seedling establishment.

Western needlegrass is moderately damaged by fire. The recovery time is between 3 and 5 years.

State and Transition Model Narrative Group 12:

This is a text description of the states, phases, transitions, and community pathways possible in the State and Transition model for the MLRA 26 Disturbance Response Group 12. Site included in this DRG are: R026XY005NV, R026XY105NV, R026XY046NV, R026XY006NV, R026XY048NV, R026XY111NV, R026XY040NV, R026XY106NV, R026XY089NV, R026XF057CA, R026XF063CA, and R026XF064CA.

Reference State 1.0:

The Reference State 1.0 represents the natural range of variability of this site under pristine conditions. The reference state has three general community phases: a shrub-grass dominant phase, a perennial grass dominant phase and a shrub dominant phase. State dynamics are maintained by interactions between climatic patterns and disturbance regimes. Negative feedbacks enhance ecosystem resilience and contribute to the stability of the state. These include the presence of all structural and functional groups, low fine fuel loads, and retention of organic matter and nutrients. Plant community phase changes are primarily driven by fire, periodic drought, and/or insect or disease attack.

Community Phase 1.1:

Needlegrasses, basin wildrye, and mountain big sagebrush dominate the site. Bitterbrush may be a significant component. Pinyon and juniper may be present.

Community Phase Pathway 1.1a, from phase 1.1 to 1.2:

Fire would decrease or eliminate the overstory of sagebrush and allow for the perennial bunchgrasses and perennial forbs to dominate the site. Fires would typically be small and patchy due to low fuel loads. Low severity fire creates sagebrush/grass mosaic. High severity fire significantly reduces sagebrush cover and leads to early/mid-seral community, dominated by grasses and forbs.

Community Phase Pathway 1.1b, from phase 1.1 to 1.3:

Time and lack of disturbance such as fire or drought allow for an increase in mountain big sagebrush. Excessive herbivory and/or long-term drought may also reduce perennial understory.

Community Phase 1.2:

This community phase is characteristic of a post-disturbance, early- to mid-seral plant community. Needlegrasses, basin wildrye, and perennial grasses and forbs dominate. Mountain big sagebrush is a minor component. Bitterbrush may be sprouting. Forbs may increase.

Community Phase Pathway 1.2a, from phase 1.2 to 1.1:

Time and lack of disturbance allows for sagebrush to reestablish.

Community Phase 1.3:

Mountain big sagebrush increases in the absence of disturbance and becomes dominant. Bitterbrush may be a significant component. Needlegrasses and other perennial grasses are reduced. Squirreldrop and/or bluegrasses may increase. Pinyon and juniper may be present.

Community Phase Pathway 1.3a, from phase 1.3 to 1.2:

Fire. A low severity fire creates a sagebrush/grass mosaic, while a high-severity fire reduces sagebrush to trace

amounts.

T1A: Transition from Reference State 1.0 to Current Potential State 2.0

Trigger: This transition is caused by the introduction of non-native annual weeds, such as cheatgrass, mustard and Russian thistle (*Salsola tragus*).

Slow variables: Over time the annual non-native plants will increase within the community, decreasing organic matter inputs from deep-rooted perennial bunchgrasses. This results in reductions in soil water availability for perennial bunchgrasses.

Threshold: Any amount of introduced non-native species causes an immediate decrease in the resilience of the site. Annual non-native species cannot be easily removed from the system and have the potential to significantly alter disturbance regimes from their historic range of variation.

T1B: Transition from Reference State 1.0 to Shrub State 3.0

Trigger: Inappropriate, long-term grazing of perennial bunchgrasses during the growing season would favor shrubs and initiate transition to Community Phase 3.1.

Slow variables: Long term decrease in deep-rooted perennial grass density.

Threshold: Loss of deep-rooted perennial bunchgrasses changes spatial and temporal nutrient cycling and nutrient redistribution and reduces soil organic matter and soil moisture.

T1C: Transition from Reference State 1.0 to Tree State 5.0

Trigger: Time and lack of disturbance or management action allows pinyon or juniper to dominate. This may be coupled with grazing management that favors tree establishment by reducing understory herbaceous competition for site resources.

Feedbacks and ecological processes: Trees increasingly dominate use of soil water, contributing to reductions in soil water availability to grasses and shrubs. Overtime, grasses and shrubs are outcompeted. Reduced herbaceous and shrub production slows soil organic matter inputs and increases soil erodibility through loss of cover and root structure.

Slow variables: Over time the abundance and size of trees will increase.

Threshold: Trees dominate ecological processes and the number of shrub skeletons exceed number of live shrubs.

Current Potential State 2.0:

This state is similar to the Reference State 1.0. Ecological function has not changed, however, the resiliency of the state has been reduced by the presence of invasive weeds. This state has four general community phases.

Negative feedbacks enhance ecosystem resilience and contribute to the stability of the state. These include the presence of all structural and functional groups, low fine fuel loads and retention of organic matter and nutrients. Positive feedbacks decrease ecosystem resilience and stability of the state. These include the non-natives high seed output, persistent seed bank, rapid growth rate, ability to cross pollinate and adaptations for seed dispersal. Additionally, the presence of highly flammable, non-native species reduces State resilience because these species can promote fire where historically fire has been infrequent leading to positive feedbacks that further the degradation of the system.

Community Phase 2.1:

Needlegrasses, basin wildrye and mountain big sagebrush dominate the site. Bitterbrush may be a significant component. Pinyon and juniper may be present. Annual non-native species present.

Community Phase Pathway 2.1a, from phase 2.1 to 2.2:

Fire. Low severity fire creates sagebrush/grass mosaic while a high severity fire significantly reduces sagebrush cover and leads to early/mid-seral community dominated by grasses and forbs. Non-native annual species present.

Community Phase Pathway 2.1b, from phase 2.1 to 2.3:

Time, lack of disturbance, long-term drought, grazing management that favors shrubs or combinations of these would allow the sagebrush overstory to increase and dominate the site, causing a reduction in the perennial bunchgrasses.

Community Phase 2.2:

This community phase is characteristic of a post-disturbance, early-seral plant community. Needlegrasses and other perennial grasses and perennial forbs dominate. Mountain big sagebrush is a minor component. Bitterbrush may be sprouting. Forbs may increase. Annual non-native species are present.

Community Phase Pathway 2.2a, from phase 2.2 to 2.1:

Absence of disturbance over time allows for the sagebrush to recover. This may be combined with grazing management that favors shrubs.

Community Phase Pathway 2.2b, from Phase 2.2 to 2.4:

Higher than normal spring precipitation favors annual non-native species such as cheatgrass. Non-native annual species will increase in production and density throughout the site. Shrub removal or prescribed burning may increase invasive annuals. Perennial bunchgrasses may also increase in production.

Community Phase 2.3:

Mountain big sagebrush is dominant and the perennial understory is reduced. Bitterbrush may be a significant component. Bluegrass may increase. Pinyon and juniper may be present. Annual non-native species are present.

Community Phase Pathway 2.3a, from phase 2.3 to 2.1:

Low severity fire creates sagebrush/grass mosaic. Other disturbances/practices include brush management with minimal soil disturbance leading to a reduction in sagebrush.

Community Phase Pathway 2.3b, from phase 2.3 to 2.2:

High severity fire or brush management with minimal soil disturbance significantly reduces sagebrush and leads to early/mid-seral community.

Community Phase Pathway 2.3c, from phase 2.3 to 2.4:

Fall and spring growing season conditions that favor the germination and production of non-native annual grasses.

Community Phase 2.4:

This community is at risk of crossing to an annual state. Native bunchgrasses and forbs still comprise 50% or more of the understory annual production, however non-native annual grasses are nearly codominant. If this site originated from phase 2.3 there may be significant shrub cover as well. Annual production and abundance of these annuals may increase drastically in years with heavy spring precipitation. This site is susceptible to further degradation from grazing, drought, and fire.

Community Phase Pathway 2.4a, from phase 2.4 to 2.2:

Growing season conditions favoring perennial bunchgrass production and reduced cheatgrass production.

Community Phase Pathway 2.4b, from phase 2.4 to 2.3:

Growing season conditions favoring perennial bunchgrass production and reduced cheatgrass production.

T2A: Transition from Current Potential State 2.0 to Shrub State 3.0:

Trigger: Inappropriate, long-term grazing of perennial bunchgrasses during growing season would favor shrubs and initiate transition to Community Phase 3.1.

Slow variables: Long term declines in deep-rooted perennial grass density.

Threshold: Loss of deep-rooted perennial bunchgrasses changes spatial and temporal nutrient cycling and nutrient redistribution and reduces soil organic matter.

T2B: Transition from Current Potential State 2.0 to Annual State 4.0:

Trigger: Fire and/or multiple fires lead to plant community phase 4.1, inappropriate grazing management that favors shrubs in the presence of non-native annual species leads to community phase 4.2.

Slow variables: Increased production and cover of non-native annual species.

Threshold: Loss of deep-rooted perennial bunchgrasses and shrubs truncates, spatially and temporally, nutrient capture and cycling within the community. Increased, continuous fine fuels from annual non-native plants modify the fire regime by changing intensity, size and spatial variability of fires.

T2C: Transition from Current Potential 2.0 to Tree State 5.0:

Trigger: Time and lack of disturbance or management action allows pinyon and juniper to dominate. This may be coupled with grazing management that favors tree establishment by reducing understory herbaceous competition for site resources.

Feedbacks and ecological processes: Trees increasingly dominate use of soil water, contributing to reductions in

soil water availability to grasses and shrubs. Overtime, grasses and shrubs are outcompeted. Reduced herbaceous and shrub production slows soil organic matter inputs and increases soil erodibility through loss of cover and root structure.

Slow variables: Over time the abundance and size of trees will increase.

Threshold: Trees dominate ecological processes and number of shrub skeletons exceed the number of live shrubs.

Shrub State 3.0:

This state has two community phases: a mountain big sagebrush dominated phase and a squirreltail-dominated phase. This state is a product of many years of heavy grazing during time periods harmful to perennial bunchgrasses. Squirreltail will increase with a reduction in deep rooted perennial bunchgrass competition and become the dominant grass. Sagebrush and bitterbrush dominate the overstory. Sagebrush canopy cover is high and sagebrush may be decadent, reflecting stand maturity and lack of seedling establishment due to competition with mature plants. The shrub overstory and bluegrass understory dominate site resources such that soil water, nutrient capture, nutrient cycling and soil organic matter are temporally and spatially redistributed.

Community Phase 3.1:

This site is at risk of transitioning to another state. Mountain big sagebrush, possibly decadent, dominates the overstory. Antelope bitterbrush may be a significant component. Deep-rooted perennial bunchgrasses are present in only trace amounts and may be absent from the community. Squirreltail may be dominant in the understory. Understory may be sparse, with bare ground increasing. Pinyon and/or juniper may be present as a result of encroachment from neighboring sites and lack of disturbance. Annual non-native species are present to increasing.

Community Phase Pathway 3.1a, from phase 3.1 to 3.2:

Fire reduces or eliminates the overstory of sagebrush. Non-native annual species increase with higher-than-normal spring precipitation.

Community Phase 3.2:

Squirreltail dominates the site. Needlegrasses and other perennial grasses are reduced. Mountain big sagebrush is reduced or missing. Bitterbrush may be sprouting. Annual non-native species are increasing and may be co-dominant in the understory.

Community Phase Pathway 3.2a, from phase 3.2 to 3.1:

Absence of disturbance over time would allow for sagebrush and other shrubs to recover.

T3A: Transition from Shrub State 3.0 to Annual State 4.0:

Trigger: Fire or inappropriate grazing management can eliminate the squirreltail understory and transition to community phase 4.1 or 4.2.

Slow variable: Increased seed production and cover of annual non-native species.

Threshold: Increased, continuous fine fuels modify the fire regime by changing intensity, size and spatial variability of fires. Changes in plant community composition and spatial variability of vegetation due to the loss of perennial bunchgrasses and big sagebrush truncate energy capture and impact the nutrient cycling and distribution.

T3B: Transition from Shrub State 3.0 to Tree State 5.0:

Trigger: Time and lack of disturbance allows for maturation of the tree community. This may be coupled with grazing management that favors shrub and tree growth.

Slow variable: Over time, with lack of fire, the abundance and size of trees increase.

Threshold: Trees overtop mountain big sagebrush and out-compete shrubs for water and sunlight. Shrub skeletons exceed live shrubs with minimal recruitment of new cohorts. Bare ground areas are large and connected.

R3A: Restoration from Shrub State 3.0 to Seeded State 6.0:

Brush management and seeding of crested wheatgrass and/or other desired species. Presence of non-native annual species will make this restoration pathway difficult.

Annual State 4.0:

This state has two community phases, both characterized by a dominance of non-native annual grasses and forbs. Shrub cover is present in one phase, while the other is primarily annual grasses. Sagebrush and/or rabbitbrush may dominate the overstory. Annual non-native species dominate the understory. Ecological dynamics are significantly altered in this state. Annual non-native species create a highly combustible fuel bed that shortens the fire return

interval. Nutrient cycling is spatially and temporally truncated as annual plants contribute significantly less to deep soil carbon. Because this is a productive site, some deep-rooted perennial grasses may remain, even in the annual state. Without management, it is unlikely these plants will be able to recruit in the presence of dominant annual grasses.

Community Phase 4.1:

Annual non-native plants such as cheatgrass dominate the site. This phase may have seeded species present if resulting from a failed seeding attempt. Needlegrasses, mountain big sagebrush, and other shrubs are only present in trace amounts and may be missing from the community.

Community Phase Pathway 4.1a, from phase 4.1 to phase 4.2:

Time and lack of disturbance allows for shrubs to reestablish. Probability of sagebrush reestablishment is extremely low.

Community Phase 4.2:

Annual non-native species, primarily cheatgrass, dominate the understory. Sprouting shrubs dominate the overstory. Perennial bunchgrasses are a minor component or missing. Seeded species may be present.

Community Phase Pathway 4.2a, from phase 4.2 to 4.1:

Fire kills non-sprouting shrubs and allows annual non-native species to dominate site.

Tree State 5.0:

This state is characterized by a dominance of pinyon and/or juniper in the overstory. It occurs where sagebrush sites exist adjacent to stands of trees. Big sagebrush and perennial bunchgrasses may still be present, but they are no longer controlling site resources. Skeletons of dead sagebrush plants are apparent. Soil moisture, soil nutrients, soil organic matter distribution and nutrient cycling have been spatially and temporally altered.

Community Phase 5.1:

Pinyon and juniper dominate. Trees are actively growing with noticeable leader growth. Mountain big sagebrush is stressed and dying. Needlegrass and other perennial grasses reduced. Annual non-native species are present under tree canopies. Bare ground interspaces are large and connected.

Community Phase Pathway 5.1a, from phase 5.1 to 5.2:

Absence of disturbance over time allows for tree cover and density to further increase and out-compete the herbaceous understory species for sunlight and water.

Community Phase 5.2:

Pinyon and/or juniper dominate the site and tree leader growth is minimal. Annual non-native species may be the dominant understory species and will typically be found under tree canopies. Trace amounts of sagebrush may be present, however dead skeletons will be more numerous than living sagebrush. Bunchgrass may or may not be present. Bare ground areas are large and connected, and soil redistribution is apparent.

Community Phase Pathway 5.2a, from phase 5.2 to 5.1:

Tree thinning treatment (typically for fuels management) removes some tree cover and may allow sagebrush to survive. Without further management this pathway is temporary.

T5A: Transition from Tree State 5.0 to Annual State 4.0:

Trigger: Catastrophic crown fire would reduce or eliminate trees to transition the site to 4.1. Tree removal when annual non-natives such as cheatgrass are present would also transition the site to state 4.0.

Slow variable: Increased seed production and cover of annual non-native species.

Threshold: Increased, continuous fine fuels modify the fire regime by changing intensity, size and spatial variability of fires. Changes in plant community composition and spatial variability of vegetation due to the loss of perennial bunchgrasses and sagebrush truncate energy capture and impact the nutrient cycling and distribution.

R5A: Restoration from Tree State 5.0 to Shrub State 6.0:

Tree removal with minimum soil disturbance such as hand felling or mastication within community phase 5.1 when native grasses are still present.

R5B: Restoration from Tree State 5.0 to Seeded State 6.0:

Tree removal and seeding of desired species. Tree removal practices that minimize soil disturbance are recommended. Probability of success declines with increased presence of non-native annual species.

Seeded State 6.0:

This state has two community phases: a grass-dominated phase and a shrub dominated phase. This state is characterized by the dominance of seeded introduced wheatgrass species in the understory. Crested wheatgrass is a dominant plant in this phase. Conservation practices such as brush management and prescribed grazing should be used to maintain the perennial bunchgrasses and other desirable species.

Community Phase 6.1:

Seeded wheatgrasses and/or other seeded species dominate the community. Non-native annual species are present. Trace amounts of mountain big sagebrush may be present, especially if seeded.

Community Phase Pathway 6.1a, from phase 6.1 to 6.2:

Time and lack of disturbance allows shrubs to dominate. This process may be accelerated through inappropriate grazing management.

Community Phase 6.2:

Mountain big sagebrush and/or bitterbrush increases and dominates the overstory. Seeded wheatgrass species are a minor component. Annual non-native species may be present in trace amounts. Pinyon and/or juniper may be present.

Community Phase Pathway 6.2a, from phase 6.2 to 6.1:

Fire, brush management and/or Aroga moth infestation reduces sagebrush overstory and allows for seeded wheatgrasses or other seeded grasses to increase.

T6A: Transition from Seeded State 6.0 to Annual State 4.0:

Trigger: Catastrophic fire.

Slow variables: Increased production and cover of non-native annual species.

Threshold: Increased continuous fine fuels modify the fire regime by changing intensity, size, and spatial variability of fires. Changes in plant community composition and spatial variability of vegetation due to the loss of perennial bunchgrasses and sagebrush truncate energy capture spatially and temporally, thus impacting nutrient cycling and distribution.

T6B: Transition from Seeded State 6.0 to Tree State 5.0:

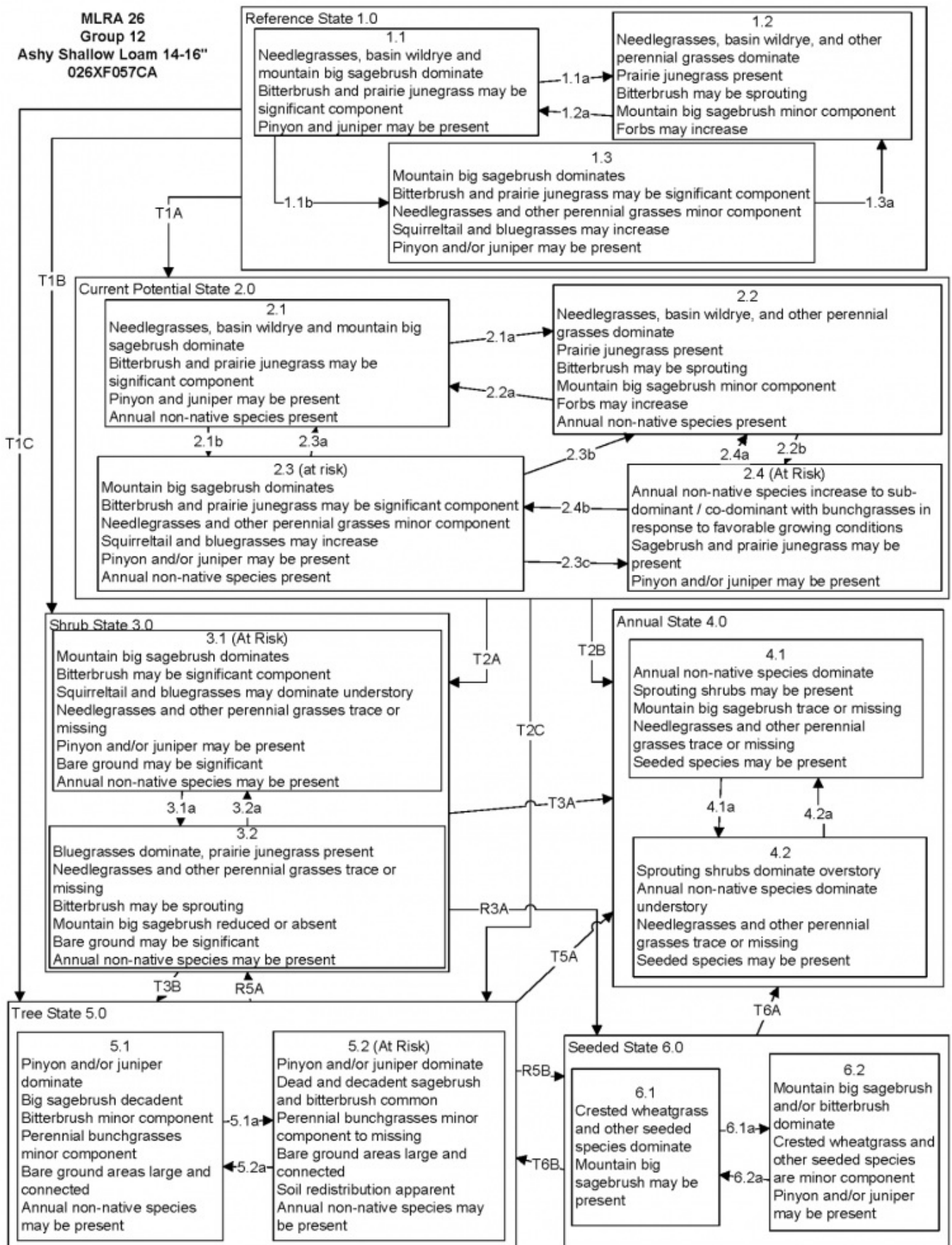
Trigger: Time and lack of disturbance or management action allows for pinyon and/or juniper to dominate. This may be coupled with grazing management that favors tree establishment by reducing understory herbaceous competition for site resources.

Slow variables: Over time, the abundance and size of trees will increase.

Threshold: Trees dominate ecological processes and number of shrub skeletons exceed number of live shrubs.

State and transition model

MLRA 26
Group 12
Ashy Shallow Loam 14-16"
026XF057CA



**MLRA 26
Group 12
Ashy Shallow Loam 14-16"
026XF057CA
KEY**

Reference State 1.0 Community Phase Pathways.

- 1.1a: Low severity fire creates sagebrush/grass mosaic; high severity fire significantly reduces sagebrush cover and leads to early/mid-seral community, dominated by grasses and forbs.
- 1.1b: Time and lack of disturbance such as fire. Excessive herbivory and/or long-term drought may also reduce perennial understory.
- 1.2a: Time and lack of disturbance allows for shrub regeneration.
- 1.3a: Low severity fire would create sagebrush/grass mosaic.

Transition T1A: Introduction of non-native annual species.

Transition T1B: Inappropriate grazing management favoring shrub dominance (to 3.1).

Transition T1C: Time without disturbance such as fire allows trees to become dominant. May be coupled with grazing management that favors shrub and tree dominance.

Current Potential State 2.0 Community Phase Pathways.

- 2.1a: Low severity fire creates sagebrush/grass mosaic; high severity fire significantly reduces sagebrush cover and leads to early/mid-seral community dominated by grasses and forbs; non-native annual species present.
- 2.1b: Time and lack of disturbance. Inappropriate grazing management and/or long-term drought may also reduce perennial understory.
- 2.2a: Time and lack of disturbance allows for regeneration of sagebrush.
- 2.2b: Shrub removal treatment or prescribed burning in the presence of annual grass species coupled with heavy spring precipitation.
- 2.3a: Low severity fire creates sagebrush/grass mosaic. Brush management with minimal soil disturbance reduces sagebrush.
- 2.3b: High severity fire or brush management with minimal soil disturbance significantly reduces sagebrush and leads to early/mid-seral community.
- 2.3c: Fall and spring growing season conditions that favors the germination and production of non-native annual grasses.
- 2.4a: Growing season conditions favoring perennial bunchgrass production and reduced cheatgrass production.
- 2.4b: Growing season conditions favoring perennial bunchgrass production and reduced cheatgrass production.

Transition T2A: Inappropriate grazing management (3.1), or high severity fire (3.2).

Transition T2B: Fire or brush management causing severe soil disturbance.

Transition T2C: Time without disturbance such as fire allows trees to become dominant. May be coupled with grazing management that favors shrub and tree dominance.

Shrub State 3.0 Community Phase Pathways.

- 3.1a: Low severity fire, non-native annual species increase with higher than normal spring precipitation.
- 3.2a: Time and lack of disturbance.

Transition T3A: Catastrophic fire and/or treatments that disturb the existing plant community.

Transition T3B: Time and lack of disturbance allows maturation of the tree community.

Restoration R3A: Brush management combined with seeding of desired species.

Annual State 4.0 Community Phase Pathways.

- 4.1a: Time and lack of disturbance. Big sagebrush is unlikely to reestablish and may take many years.
- 4.2a: Fire.

Tree State 5.0 Community Phase Pathways.

- 5.1a: Time and lack of disturbance allows for maturation of tree community.
- 5.2a: Tree thinning treatment (typically for fuels management).

Transition T5A: Catastrophic fire.

Restoration R5A: Tree removal allows for shrub dominance.

Restoration R5B: Tree management coupled with seeding of desired species.

Seeded State 6.0 Community Phase Pathways.

- 6.1a: Time and lack of disturbance.
- 6.2a: Fire and/or brush management.

Transition T6A: Fire and/or treatments that disturb the existing plant community, more likely from 6.2.

Transition T6B: Time and lack of disturbance allows maturation of the tree community (from 6.2).

State 1 Reference State

Community 1.1

Reference Plant Community

The reference plant community is dominated by mountain big sagebrush and needlegrasses. The plant community is dominated by western needlegrass, and big sagebrush. Prairie junegrass and antelope bitterbrush are other important species on this site. Potential vegetative composition is about 55% grasses, 10% forbs and 35% shrubs and trees.

Table 5. Annual production by plant type

Plant Type	Low (Lb/Acre)	Representative Value (Lb/Acre)	High (Lb/Acre)
Grass/Grasslike	275	385	495
Shrub/Vine	175	245	315
Forb	50	70	90
Total	500	700	900

Additional community tables

Table 6. Community 1.1 plant community composition

Group	Common Name	Symbol	Scientific Name	Annual Production (Lb/Acre)	Foliar Cover (%)
Grass/Grasslike					
1	Primary Perennial Grasses			245–420	
	western needlegrass	ACOCO	<i>Achnatherum occidentale</i> ssp. <i>occidentale</i>	210–315	–
	prairie Junegrass	KOMA	<i>Koeleria macrantha</i>	35–105	–
2	Secondary Perennial Grasses/Grasslikes			35–70	
	Indian ricegrass	ACHY	<i>Achnatherum hymenoides</i>	4–21	–
	Lettermann's needlegrass	ACLE9	<i>Achnatherum lettermannii</i>	4–21	–
	Thurber's needlegrass	ACTH7	<i>Achnatherum thurberianum</i>	4–21	–
	Webber needlegrass	ACWE3	<i>Achnatherum webberi</i>	4–21	–
	sedge	CAREX	<i>Carex</i>	4–21	–
	squirreldtail	ELEL5	<i>Elymus elymoides</i>	4–21	–
	needle and thread	HECO26	<i>Hesperostipa comata</i>	4–21	–
	basin wildrye	LECI4	<i>Leymus cinereus</i>	4–21	–
	rock melicgrass	MEST	<i>Melica stricta</i>	4–21	–
	bluegrass	POA	<i>Poa</i>	4–21	–
Forb					
3	Perennial Forbs			14–105	
	Forb, annual	2FA	<i>Forb, annual</i>	4–21	–
	rockcress	ARABI2	<i>Arabis</i>	4–21	–
	tapertip hawksbeard	CRAC2	<i>Crepis acuminata</i>	4–21	–
	buckwheat	ERIOG	<i>Eriogonum</i>	4–21	–
	lupine	LUPIN	<i>Lupinus</i>	4–21	–
	vetch	VICIA	<i>Vicia</i>	4–21	–
Shrub/Vine					
4	Primary Shrubs			140–245	
	mountain big sagebrush	ARTRV	<i>Artemisia tridentata</i> ssp. <i>vaseyana</i>	105–175	–
	antelope bitterbrush	PUTR2	<i>Purshia tridentata</i>	35–70	–
5	Secondary Shrubs			14–70	
	yellow rabbitbrush	CHVI8	<i>Chrysothamnus viscidiflorus</i>	4–21	–
	mormon tea	EPVI	<i>Ephedra viridis</i>	4–21	–
	desert peach	PRAN2	<i>Prunus andersonii</i>	4–21	–
	wax currant	RICE	<i>Ribes cereum</i>	4–21	–
Tree					
6	Trees			4–21	
	singleleaf pinyon	PIMO	<i>Pinus monophylla</i>	4–21	–

Animal community

Livestock Interpretations:

Western needlegrass has a spreading and deeply penetrating root system, which makes it resistant to trampling.

Rapid seasonal development of prairie Junegrass provides good, early-spring forage for livestock. It also provides

suitable forage in the fall after curing. Mountain big sagebrush is eaten by domestic livestock but has long been considered to be of low palatability, and a competitor to more desirable species. Antelope bitterbrush is important browse for livestock. Domestic livestock and mule deer may compete for antelope bitterbrush in late summer, fall, and/or winter. Cattle prefer antelope bitterbrush from mid-May through June and again in September and October. Wildlife Interpretations:

Mountain big sagebrush is highly preferred and nutritious winter forage for mule deer and elk. Sage-grouse: Sagebrush-grassland communities provide critical sage-grouse breeding and nesting habitats. Meadows surrounded by sagebrush may be used as feeding and strutting grounds. Sagebrush is a crucial component of their diet year-round, and sage-grouse select sagebrush almost exclusively for cover. Sage-grouse prefer mountain big sagebrush and Wyoming big sagebrush communities to basin big sagebrush communities. Pronghorn antelope, mule deer, elk, and bighorn sheep utilize antelope bitterbrush extensively. Mule deer use of antelope bitterbrush peaks in September, when antelope bitterbrush may compose 91 percent of the diet. Winter use is greatest during periods of deep snow. Antelope bitterbrush seed is a large part of the diets of rodents, especially deer mice and kangaroo rats. Prairie Junegrass is also utilized by bighorn sheep, mountain goats, elk, and mule deer in the spring and in fall after curing. Although, due to scattered distribution, prairie Junegrass does not maintain a significant role in the diet of most wildlife species. The short stature and scattered distribution of prairie Junegrass provide minimum coverage for larger birds and mammals.

Other products

Native Americans used big sagebrush leaves and branches for medicinal teas, and the leaves as a fumigant. Bark was woven into mats, bags and clothing. Antelope bitterbrush has been used extensively in land reclamation. Antelope bitterbrush enhances succession by retaining soil and depositing organic material and in some habitats and with some ecotypes, by fixing nitrogen.

Other information

Prairie Junegrass can recolonize areas that have been subjected to severe water stress. Recolonization by prairie Junegrass provides protective cover to help subsequent post-drought, successional plant species growth.

Type locality

Location 1: Mono County, CA	
Latitude	38° 11' 45"
Longitude	119° 6' 14"
General legal description	Bodie Hills, approximately 5 miles west-southwest of Bodie, Ca

Other references

Fire Effect Information System (Online; <http://www.fs.fed.us/database/feis/plants/>).

USDA-NRCS Plants Database (Online; <http://plants.usda.gov/>).

Contributors

A. Mushrush
Tamzen Stringham
Patti Novak-Echenique

Approval

Kendra Moseley, 4/10/2024

Rangeland health reference sheet

Interpreting Indicators of Rangeland Health is a qualitative assessment protocol used to determine ecosystem

condition based on benchmark characteristics described in the Reference Sheet. A suite of 17 (or more) indicators are typically considered in an assessment. The ecological site(s) representative of an assessment location must be known prior to applying the protocol and must be verified based on soils and climate. Current plant community cannot be used to identify the ecological site.

Author(s)/participant(s)	
Contact for lead author	
Date	05/04/2024
Approved by	Kendra Moseley
Approval date	
Composition (Indicators 10 and 12) based on	Annual Production

Indicators

1. **Number and extent of rills:**

2. **Presence of water flow patterns:**

3. **Number and height of erosional pedestals or terracettes:**

4. **Bare ground from Ecological Site Description or other studies (rock, litter, lichen, moss, plant canopy are not bare ground):**

5. **Number of gullies and erosion associated with gullies:**

6. **Extent of wind scoured, blowouts and/or depositional areas:**

7. **Amount of litter movement (describe size and distance expected to travel):**

8. **Soil surface (top few mm) resistance to erosion (stability values are averages - most sites will show a range of values):**

9. **Soil surface structure and SOM content (include type of structure and A-horizon color and thickness):**

10. **Effect of community phase composition (relative proportion of different functional groups) and spatial distribution on infiltration and runoff:**

11. **Presence and thickness of compaction layer (usually none; describe soil profile features which may be mistaken for compaction on this site):**

-
12. **Functional/Structural Groups (list in order of descending dominance by above-ground annual-production or live foliar cover using symbols: >>, >, = to indicate much greater than, greater than, and equal to):**

Dominant:

Sub-dominant:

Other:

Additional:

-
13. **Amount of plant mortality and decadence (include which functional groups are expected to show mortality or decadence):**

-
14. **Average percent litter cover (%) and depth (in):**

-
15. **Expected annual annual-production (this is TOTAL above-ground annual-production, not just forage annual-production):**

-
16. **Potential invasive (including noxious) species (native and non-native). List species which BOTH characterize degraded states and have the potential to become a dominant or co-dominant species on the ecological site if their future establishment and growth is not actively controlled by management interventions. Species that become dominant for only one to several years (e.g., short-term response to drought or wildfire) are not invasive plants. Note that unlike other indicators, we are describing what is NOT expected in the reference state for the ecological site:**

-
17. **Perennial plant reproductive capability:**
-