

## Ecological site R026XY047NV DROUGHTY CLAYPAN 8-10 P.Z.

Last updated: 4/10/2024  
Accessed: 05/19/2024

---

### General information

**Provisional.** A provisional ecological site description has undergone quality control and quality assurance review. It contains a working state and transition model and enough information to identify the ecological site.

### MLRA notes

Major Land Resource Area (MLRA): 026X—Carson Basin and Mountains

The area lies within western Nevada and eastern California, with about 69 percent being within Nevada, and 31 percent being within California. Almost all this area is in the Great Basin Section of the Basin and Range Province of the Intermontane Plateaus. Isolated north-south trending mountain ranges are separated by aggraded desert plains. The mountains are uplifted fault blocks with steep side slopes. Most of the valleys are drained by three major rivers flowing east across this MLRA. A narrow strip along the western border of the area is in the Sierra Nevada Section of the Cascade-Sierra Mountains Province of the Pacific Mountain System. The Sierra Nevada Mountains are primarily a large fault block that has been uplifted with a dominant tilt to the west. This structure leaves an impressive wall of mountains directly west of this area. This helps create a rain shadow affect to MLRA 26. Parts of this eastern face, but mostly just the foothills, mark the western boundary of this area. Elevations range from about 3,806 feet (1,160 meters) on the west shore of Pyramid Lake to 11,653 feet (3,552 meters) on the summit of Mount Patterson in the Sweetwater Mountains.

Valley areas are dominantly composed of Quaternary alluvial deposits with Quaternary playa or alluvial flat deposits often occupying the lowest valley bottoms in the internally drained valleys, and river deposited alluvium being dominant in externally drained valleys. Hills and mountains are dominantly Tertiary andesitic flows, breccias, ash flow tuffs, rhyolite tuffs or granodioritic rocks. Quaternary basalt flows are present in lesser amounts, and Jurassic and Triassic limestone and shale, and Precambrian limestone and dolomite are also present in very limited amounts. Also of limited extent are glacial till deposits along the east flank of the Sierra Nevada Mountains, the result of alpine glaciation.

The average annual precipitation in this area is 5 to 36 inches (125 to 915 millimeters), increasing with elevation. Most of the rainfall occurs as high-intensity, convective storms in spring and autumn. Precipitation is mostly snow in winter. Summers are dry. The average annual temperature is 37 to 54 degrees F (3 to 12 degrees C). The freeze-free period averages 115 days and ranges from 40 to 195 days, decreasing in length with elevation. The dominant soil orders in this MLRA are Aridisols and Mollisols. The soils in the area dominantly have a mesic soil temperature regime, an aridic or xeric soil moisture regime, and mixed or smectitic mineralogy. They generally are well drained, are clayey or loamy and commonly skeletal, and are very shallow to moderately deep.

This area supports shrub-grass vegetation characterized by big sagebrush. Low sagebrush and Lahontan sagebrush occur on some soils. Antelope bitterbrush, squirreltail, desert needlegrass, Thurber needlegrass, and Indian ricegrass are important associated plants. Green ephedra, Sandberg bluegrass, Anderson peachbrush, and several forb species also are common. Juniper-pinyon woodland is typical on mountain slopes. Jeffrey pine, lodgepole pine, white fir, and manzanita grow on the highest mountain slopes. Shadscale is the typical plant in the drier parts of the area. Sedges, rushes, and moisture-loving grasses grow on the wettest parts of the wet flood plains and terraces. Basin wildrye, alkali sacaton, saltgrass, buffaloberry, black greasewood, and rubber rabbitbrush grow on the drier sites that have a high concentration of salts.

Some of the major wildlife species in this area are mule deer, coyote, beaver, muskrat, jackrabbit, cottontail,

raptors, pheasant, chukar, blue grouse, mountain quail, and mourning dove. The species of fish in the area include trout and catfish. The Lahontan cutthroat trout in the Truckee River is a threatened and endangered species.

## LRU notes

The Semiarid Fans and Basins LRU includes basins, alluvial fans, and adjacent hill slopes immediately east of the Sierra Nevada mountain range and are affected by its climate or have its granitic substrate. Elevations range from 1355 to 1920 meters and slopes range from 0 to 30 percent, with a median value of 6 percent. Frost free days range from 121 to 170.

## Ecological site concept

The Droughty Claypan 8-10 P.Z. is found on alluvial fans and fan remnants. The slopes are typically between 8 to 30 percent and elevations are between 4,600 to 6,000 feet. The surface soils are extremely cobbly sandy loam or very cobbly loam. There is an increase in clay in the soil subsurface that typically inhibits root growth. The dominant plants are little sagebrush (*Artemisia arbuscula* ssp. *longicaulis*), Thurber's needlegrass (*Achnatherum thurberianum*), and Sandberg's bluegrass (*Poa secunda*).

## Associated sites

R026XY022NV	<b>STONY SLOPE 8-10 P.Z.</b>
R026XY050NV	<b>GRAVELLY CLAY 10-12 P.Z.</b>
R026XY094NV	<b>ERODED SLOPE 8-10</b>
R026XY097NV	<b>CHURNING CLAYPAN 8-10 P.Z.</b>

## Similar sites

R026XY097NV	<b>CHURNING CLAYPAN 8-10 P.Z.</b> More productive site; occurs only on vertisols
R026XY033NV	<b>SANDY CLAYPAN 8-10 P.Z.</b> ACHY dominant grass; ATCA2 major shrub
R026XY101NV	<b>SANDY LOAM 8-10 P.Z.</b> More productive site
R026XY050NV	<b>GRAVELLY CLAY 10-12 P.Z.</b> ACTH7 dominant grass
R026XY091NV	<b>CHURNING CLAYPAN 10-12 P.Z.</b> POSE dominant grass; occurs only on vertisols
R026XY094NV	<b>ERODED SLOPE 8-10</b> More productive site
R026XY088NV	<b>CLAY SLOPE 10-12 P.Z.</b> ACTH7 dominant grass GLSPA important shrub

**Table 1. Dominant plant species**

Tree	Not specified
Shrub	(1) <i>Artemisia arbuscula</i> ssp. <i>longiloba</i>
Herbaceous	(1) <i>Achnatherum speciosum</i> (2) <i>Achnatherum hymenoides</i>

## Physiographic features

This site occurs on alluvial fans and fan remnants. Slopes range from 8 to over 30 percent. Elevations are 4600 to 6000 feet.

**Table 2. Representative physiographic features**

Landforms	(1) Alluvial fan (2) Fan remnant
Elevation	1,402–1,829 m
Slope	8–30%
Aspect	Aspect is not a significant factor

## Climatic features

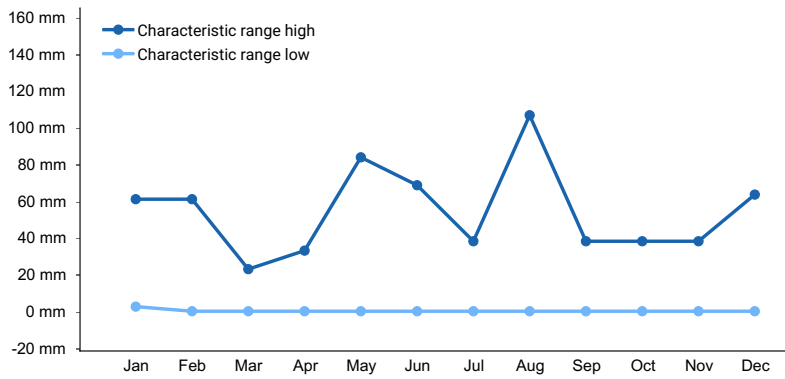
The climate is semiarid with cool, moist winters and warm, dry summers. Average annual precipitation is about 8 to 10 inches. Mean annual air temperature is 49 to 51 degrees F. The average growing season is about 90 to 110 days.

Nevada's climate is predominantly arid, with large daily ranges of temperature, infrequent severe storms, heavy snowfall in the higher mountains, and great location variations with elevation. Three basic geographical factors largely influence Nevada's climate: continentality, latitude, and elevation. Continentality is the most important factor. The strong continental effect is expressed in the form of both dryness and large temperature variations. Nevada lies on the eastern, lee side of the Sierra Nevada Range, a massive mountain barrier that markedly influences the climate of the State. The prevailing winds are from the west, and as the warm moist air from the Pacific Ocean ascend the western slopes of the Sierra Range, the air cools, condensation occurs and most of the moisture falls as precipitation. As the air descends the eastern slope, it is warmed by compression, and very little precipitation occurs. The effects of this mountain barrier are felt not only in the West but throughout the state, with the result that the lowlands of Nevada are largely desert or steppes. The temperature regime is also affected by the blocking of the inland-moving maritime air. Nevada sheltered from maritime winds, has a continental climate with well-developed seasons and the terrain responds quickly to changes in solar heating.

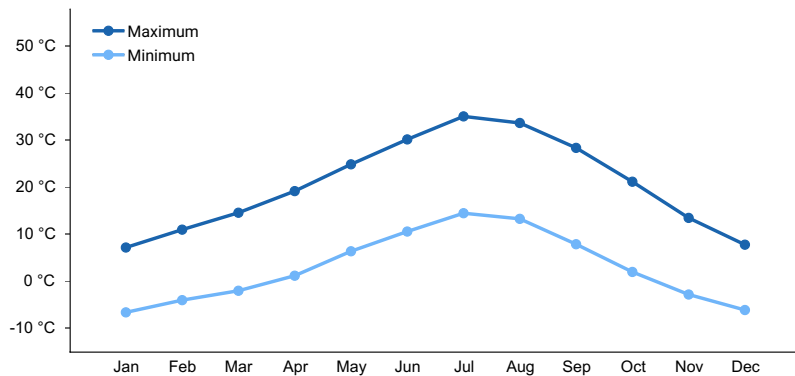
Nevada lies within the mid-latitude belt of prevailing westerly winds which occur most of the year. These winds bring frequent changes in weather during the late fall, winter and spring months, when most of the precipitation occurs. To the south of the mid-latitude westerlies, lies a zone of high pressure in subtropical latitudes, with a center over the Pacific Ocean. In the summer, this high-pressure belt shifts northward over the latitudes of Nevada, blocking storms from the ocean. The resulting weather is mostly clear and dry during the summer and early fall, with scattered thundershowers. The eastern portion of the state receives significant summer thunderstorms generated from monsoonal moisture pushed up from the Gulf of California, known as the North American monsoon. The monsoon system peaks in August and by October the monsoon high over the Western U.S. begins to weaken and the precipitation retreats southward towards the tropics (NOAA 2004).

**Table 3. Representative climatic features**

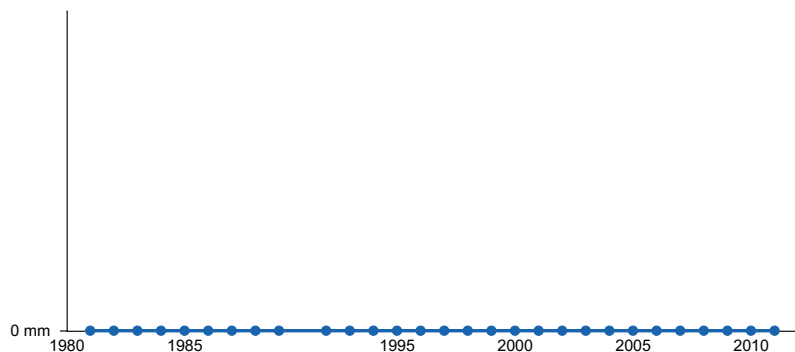
Frost-free period (characteristic range)	
Freeze-free period (characteristic range)	
Precipitation total (characteristic range)	203-254 mm
Frost-free period (average)	100 days
Freeze-free period (average)	
Precipitation total (average)	229 mm



**Figure 1. Monthly precipitation range**



**Figure 2. Monthly average minimum and maximum temperature**



**Figure 3. Annual precipitation pattern**

## Influencing water features

There are no influencing water features associated with this site.

## Soil features

The associated soils associated are typically formed in alluvium from granite. The soil surface is medium in texture over fine-textured subsoil. Permeability is moderately slow and the soils are well drained. Available water capacity is low. Infiltration is restricted as once these soils are wetted they are subject to water loss by runoff. Runoff ranges from high to very high. The soils commonly have over 40 percent gravels and cobbles on the surface which provide a stabilizing affect on surface erosion conditions. The soil series associated with this site are Stucky and Jaybee.

**Table 4. Representative soil features**

Surface texture	(1) Very cobbly sandy loam
Family particle size	(1) Loamy
Drainage class	Well drained

Permeability class	Moderately slow
Soil depth	18–36 cm
Surface fragment cover <=3"	15–25%
Surface fragment cover >3"	20–25%
Available water capacity (0-101.6cm)	3.56–6.1 cm
Calcium carbonate equivalent (0-101.6cm)	0%
Electrical conductivity (0-101.6cm)	0 mmhos/cm
Sodium adsorption ratio (0-101.6cm)	0
Soil reaction (1:1 water) (0-101.6cm)	6.8–7.2
Subsurface fragment volume <=3" (Depth not specified)	15–25%
Subsurface fragment volume >3" (Depth not specified)	5–25%

## Ecological dynamics

As ecological condition declines, Lahontan sagebrush, shadscale, rabbitbrush, and bottlebrush squirreltail, increase as desert needlegrass and Indian ricegrass decrease. Cheatgrass is most likely to invade this site.

### Fire Ecology:

The mean fire return intervals for Lahontan sagebrush communities have been estimated to be from 35 to over 100 years. Fire most often occurs during wet years with high forage production. Lahontan sagebrush is very susceptible to fire damage. Lahontan sagebrush is usually killed by fire and does not re-sprout. The recovery in burned areas is usually via small, light, wind-dispersed seed for all low sagebrush subspecies. Partially injured Lahontan sagebrush may re-grow from living branches, but sprouting does not occur.

Indian ricegrass can be killed by fire, depending on severity and season of burn. Indian ricegrass reestablishes on burned sites through seed dispersed from adjacent unburned areas. Desert needlegrass has persistent dead leaf bases, which make it susceptible to burning. Fire removes the accumulation; a rapid, cool fire will not burn deep into the root crown.

**Reference State 1.0:** The Reference State 1.0 is a representative of the natural range of variability under pristine conditions. The reference state has three general community phases: a shrub-grass dominant phase, a perennial grass dominant phase and a shrub dominant phase. State dynamics are maintained by interactions between climatic patterns and disturbance regimes. Negative feedbacks enhance ecosystem resilience and contribute to the stability of the state. These include the presence of all structural and functional groups, low fine fuel loads, and retention of organic matter and nutrients. Plant community phase changes are primarily driven by fire, periodic drought and/or insect or disease attack.

**Community Phase 1.1:** This community is dominated by Lahontan sagebrush, Thurber's needlegrass and Sandberg bluegrass. Forbs and other grasses make up smaller components. Pinyon and/or juniper may be present.

**Community Phase Pathway 1.1a, from Phase 1.1 to 1.2:** Fire will decrease or eliminate the overstory of sagebrush and allow for the perennial bunchgrasses to dominate the site. Fires will typically be low severity resulting in a mosaic pattern due to low fuel loads. A fire following an unusually wet spring may be more severe and reduce sagebrush cover to trace amounts.

**Community Phase Pathway 1.1b, from Phase 1.1 to 1.3:** Time and lack of disturbance such as fire allows for sagebrush to increase and become decadent. Long-term drought, herbivory, or combinations of these will cause a decline in perennial bunchgrasses and fine fuels leading to a reduced fire frequency and allowing sagebrush to

dominate the site.

Community Phase 1.2: This community phase is characteristic of a post-disturbance, early/mid-seral community. Thurber's needlegrass, squirreltail, and other perennial bunchgrasses dominate. Depending on fire severity patches of intact sagebrush may remain. Rabbitbrush and other sprouting shrubs may be sprouting. Perennial forbs may be a significant component for a number of years following fire.

Community Phase Pathway 1.2a, from Phase 1.2 to 1.1: Time and lack of disturbance will allow sagebrush to increase.

Community Phase 1.3: Sagebrush increases in the absence of disturbance. Decadent sagebrush dominates the overstory and the deep-rooted perennial bunchgrasses in the understory are reduced either from competition with shrubs and/or from herbivory.

Community Phase Pathway 1.3a, from Phase 1.3 to 1.1: A low severity fire, herbivory or combinations will reduce the sagebrush overstory and create a sagebrush/grass mosaic.

Community Phase Pathway 1.3b, from Phase 1.3 to 1.2: Fire will decrease or eliminate the overstory of sagebrush and allow for the perennial bunchgrasses to dominate the site. Fires may be high severity in this community phase due to the dominance of sagebrush resulting in removal of overstory shrub community.

T1A: Transition from the Reference State 1.0 to Current Potential State 2.0

Trigger: This transition is caused by the introduction of non-native annual plants, such as cheatgrass, mustards, redstem stork's bill (*Erodium cicutarium*), or bur buttercup (*Ceratocephala testiculata*).

Slow variables: Over time the annual non-native species will increase within the community.

Threshold: Any amount of introduced non-native species causes an immediate decrease in the resilience of the site. Annual non-native species cannot be easily removed from the system and have the potential to significantly alter disturbance regimes from their historic range of variation.

Current Potential State 2.0: This state is similar to the Reference State 1.0. Ecological function has not changed, however the resiliency of the state has been reduced by the presence of invasive weeds. This state has four general community phases. These non-native species can be highly flammable, and promote fire where historically fire had been infrequent. Negative feedbacks enhance ecosystem resilience and contribute to the stability of the state. These feedbacks include the presence of all structural and functional groups, low fine fuel loads, and retention of organic matter and nutrients. Positive feedbacks decrease ecosystem resilience and stability of the state. These include the non-natives' high seed output, persistent seed bank, rapid growth rate, ability to cross pollinate, and adaptations for seed dispersal.

Community Phase 2.1: This community phase is similar to the Reference State Community Phase 1.1, with the presence of non-native species in trace amounts. Sagebrush, Thurber's needlegrass and Sandberg bluegrass dominate the site. Forbs and other shrubs and grasses make up smaller components of this site.

Community Phase Pathway 2.1a, from Phase 2.1 to 2.2: Fire reduces the shrub overstory and allows for perennial bunchgrasses to dominate the site. Fires are typically low severity resulting in a mosaic pattern due to low fuel loads. A fire following an unusually wet spring or a change in management favoring an increase in fine fuels may be more severe and reduce sagebrush cover to trace amounts. Annual non-native species are likely to increase after fire.

Community Phase Pathway 2.1b, from Phase 2.1 to 2.3: Time and lack of disturbance allows for sagebrush to increase and become decadent. Long-term drought reduces fine fuels and leads to a reduced fire frequency, allowing sagebrush to dominate the site. Inappropriate grazing management reduces the perennial bunchgrass understory; conversely Sandberg bluegrass may increase in the understory depending on grazing management.

Community Phase 2.2: This community phase is characteristic of a post-disturbance, early to mid-seral community where annual non-native species are present. Sagebrush is present in trace amounts; perennial bunchgrasses dominate the site. Depending on fire severity patches of intact sagebrush may remain. Rabbitbrush maybe sprouting or dominant in the community. Perennial forbs may be a significant component for a number of years following fire. Annual non-native species are stable or increasing within the community.

Community Phase Pathway 2.2a, from Phase 2.2 to 2.1: Time and lack of disturbance and/or grazing management that favors the establishment and growth of sagebrush allows the shrub component to recover. The establishment of low sagebrush can take many years.

Community Phase Pathway 2.2b, from Phase 2.2 to 2.4: Higher than normal spring precipitation favors annual non-native species such as cheatgrass. Non-native annual species will increase in production and density throughout the site. Perennial bunchgrasses may also increase in production.

Community Phase 2.3 (At Risk): This community is at risk of crossing a threshold to another state. Sagebrush dominates the overstory and perennial bunchgrasses in the understory are reduced, either from competition with shrubs or from inappropriate grazing, or from both. Rabbitbrush may be a significant component. Squirreltail or Sandberg bluegrass may increase and become dominant. Annual non-native species may be stable or increasing due to lack of competition with perennial bunchgrasses. This site is susceptible to further degradation from grazing, drought, and fire.

Community Phase Pathway 2.3a, from Phase 2.3 to 2.1: A change in grazing management that reduces shrubs will allow for the perennial bunchgrasses in the understory to increase. Heavy late-fall or winter grazing may cause mechanical damage and subsequent death to sagebrush, facilitating an increase in the herbaceous understory. Low and Lahontan sagebrush are palatable shrub species and can decrease with increased grazing pressure. Brush treatments with minimal soil disturbance will also decrease sagebrush and release the perennial understory. A low severity fire would decrease the overstory of sagebrush and allow for the understory perennial grasses to increase. Due to low fuel loads in this state, fires will likely be small creating a mosaic pattern. Annual non-native species are present and may increase in the community.

Community Phase Pathway 2.3b, from Phase 2.3 to 2.2: Fire eliminates/reduces the overstory of sagebrush and allows for the understory perennial grasses to increase. Fires may be high severity in this community phase due to the dominance of sagebrush resulting in removal of overstory shrub community. Annual non-native species respond well to fire and may increase post burn.

Community Phase Pathway 2.3c, from Phase 2.3 to 2.4: Fall, winter, and spring precipitation and temperatures mediate the ability for annual grasses and perennial grasses to germinate and/or survive. Higher than normal spring precipitation creates high annual production of annual grasses (Bradley et al. 2016). Higher than normal spring precipitation favors annual non-native species such as cheatgrass. Non-native annual species increase in production and density throughout the site. Perennial bunchgrasses may also increase in production.

Community Phase 2.4 (At Risk): This community is at risk of crossing into an annual state. Native bunchgrasses dominate; however, annual non-native species such as cheatgrass may be sub or co-dominant in the understory. Annual production and abundance of these annuals may increase drastically in years with heavy spring precipitation. Seeded species may be present. Sagebrush is a minor component. This site is susceptible to further degradation from grazing, drought, and fire.

Community Phase Pathway 2.4a, from Phase 2.4 to 2.2: Fall, winter, and spring precipitation and temperatures mediate the ability for annual grasses and perennial grasses to germinate and/or survive. Depending on temperatures and precipitation in winter and spring, annual grass production may be reduced in favor of perennial bunchgrasses.

Community Phase Pathway 2.4b, from Phase 2.4 to 2.3: Rainfall patterns favoring perennial bunchgrasses. Less than normal spring precipitation followed by higher than normal summer precipitation will increase perennial bunchgrass production.

T2A: Transition from Current Potential State 2.0 to Shrub State 3.0:

Trigger: To Community Phase 3.1: Inappropriate grazing will decrease or eliminate deep rooted perennial bunchgrasses and increase bare ground and shallow-rooted grazing-tolerant grasses. Shrub growth and establishment is favored under these conditions. To Community Phase 3.2: Severe fire in Community Phase 2.3 will remove sagebrush overstory, decrease perennial bunchgrasses and enhance annual and perennial forb growth. Squirreltail and/or Sandberg bluegrass may increase. Annual non-native species are present.

Slow variables: Long term decrease in deep-rooted perennial grass density.

Threshold: Loss of deep-rooted perennial bunchgrasses changes nutrient cycling, nutrient redistribution, and reduces soil organic matter.

T2B: Transition from Current Potential State 2.0 to Annual State 4.0:

Trigger: Fire or soil disturbing treatment would transition to Community Phase 4.1.

Slow variables: Increased production and cover of non-native annual species.

Threshold: Loss of deep-rooted perennial bunchgrasses and shrubs changes temporal and spatial nutrient capture and cycling within the community. Increased, continuous fine fuels modify the fire regime by increasing frequency, size and spatial variability of fires.

Shrub State 3.0: This state is a product of many years of heavy grazing during time periods harmful to perennial bunchgrasses. Squirreltail and/or Sandberg bluegrass increase with a reduction in deep rooted perennial bunchgrass competition and become the dominant grasses. Bare ground increases significantly. Annual forbs may be a significant or dominant component of the understory, resulting in bare ground after they senesce in the summer. Sagebrush dominates the overstory and rabbitbrush may be a significant component. Sagebrush cover exceeds site concept and may be decadent, reflecting stand maturity and lack of seedling establishment due to competition with mature plants. The shrub overstory and bluegrass understory dominate site resources such that soil water, nutrient capture, nutrient cycling and soil organic matter are temporally and spatially redistributed.

Community Phase 3.1 (At Risk): Decadent sagebrush dominates the overstory. Rabbitbrush may be a significant component. Deep-rooted perennial bunchgrasses are present in trace amounts and may be absent from the community. Squirreltail, bluegrass species, and/or annual forbs dominate the understory. Bare ground may be significant. Pinyon and/or juniper may be encroaching but are not yet affecting understory vegetation.

Community Phase Pathway 3.1a, from Phase 3.1 to 3.2: Fire, heavy fall grazing causing mechanical damage to shrubs, and/or brush treatments with minimal soil disturbance, will greatly reduce the overstory shrubs to trace amounts and allow for Sandberg bluegrass to dominate the site.

Community Phase 3.2: Annual and perennial forbs dominate the site (i.e. redstem stork's bill (*Erodium cicutarium*), Hooker's balsamorhiza (*Balsamorhiza hookeri*) and tapertip hawkbeard (*Crepis acuminata*)). Squirreltail and/or Sandberg bluegrass may increase and be co-dominant with forbs. Deep-rooted perennial bunchgrasses are a minor component or missing. Annual non-native species may be present but are not dominant. Trace amounts of sagebrush or rabbitbrush may be present.

Community Phase Pathway 3.2a, from Phase 3.2 to 3.1: Time and lack of disturbance and/or grazing management that favors the establishment and growth of sagebrush allows the shrub component to recover. The establishment of low and/or Lahontan sagebrush can take many years.

T3A: Transition from Shrub State 3.0 to Annual State 4.0: Trigger: Fire and/or treatments that disturb the soil and existing plant community.

Slow variables: Increased seed production (following a wet spring) and cover of annual non-native species.

Threshold: Increased, continuous fine fuels modify the fire regime by changing frequency, intensity, size and spatial variability of fires. Changes in plant community composition and spatial variability of vegetation due to the loss of perennial bunchgrasses and sagebrush truncate energy capture and impact the temporal and spatial aspects of nutrient cycling and distribution.

T3B: Transition from Shrub State 3.0 to Tree State 5.0: Trigger: Absence of disturbance over time allows Utah juniper and/or singleleaf pinyon dominance. Feedbacks and ecological processes: Trees increasingly dominate use of soil water, contributing to reductions in soil water availability to grasses and shrubs. Overtime, grasses and shrubs are outcompeted. Reduced herbaceous and shrub production slows soil organic matter inputs and increases soil erodibility through loss of cover and root structure.

Slow variables: Long-term increase in pinyon pine and/or Utah juniper density.

Threshold: Trees overtop sagebrush and out-compete shrubs for water and sunlight. Shrub skeletons exceed live shrubs in number. There is minimal recruitment of new shrub cohorts.

Annual State 4.0: An abiotic threshold has been crossed and state dynamics are driven by fire and time. The herbaceous understory is dominated by annual non-native species such as cheatgrass and mustards. Resiliency has declined and further degradation from fire facilitates a cheatgrass and sprouting shrub plant community. Fire



return interval has shortened due to the dominance of cheatgrass in the understory and is a driver in site dynamics.

Community Phase 4.1: Annuals nonnative species dominate. Sagebrush and perennial bunchgrasses may still be present in trace amounts. Surface erosion may increase with summer convection storms and would be verified through increased pedestalling of plants, rill formation or extensive water flow paths.

Community Phase Pathway 4.1a, from Phase 4.1 to 4.2: Time and lack of disturbance allows rabbitbrush and/or other sprouting shrubs to recover after fire. Probability of sagebrush establishment is extremely low.

Community Phase 4.2: Rabbitbrush is typically the dominant overstory shrub. Sagebrush is a minor component or missing. Annual non-native species dominate the understory.

Community Phase Pathway 4.2a, from Phase 4.2 to 4.1: Fire reduces/eliminates overstory brush component and allows for annual non-native species to dominate the site.

Tree State 5.0: This state is characterized by a dominance of Utah juniper and/or singleleaf pinyon in the overstory. Big sagebrush and perennial bunchgrasses may still be present, but they are no longer controlling site resources. Soil moisture, soil nutrients and soil organic matter distribution and cycling have been spatially and temporally altered.

Community Phase 5.1: Utah juniper and/or singleleaf pinyon dominates the overstory and site resources. Trees are actively growing with noticeable leader growth. Trace amounts of bunchgrasses may be found under tree canopies with trace amounts of Sandberg bluegrass and forbs in the interspaces. Sagebrush is stressed and dying. Annual non-native species are present under tree canopies. Bare ground interspaces are large and connected.

Community Phase Pathway 5.1a, from Phase 5.1 to 5.2: Time and lack of disturbance or management action allows Utah juniper and/or singleleaf pinyon to further mature and dominate site resources.

Community Phase 5.2: Utah juniper and/or singleleaf pinyon dominates the site and tree leader growth is minimal; annual non-native species may be the dominant understory species and will typically be found under the tree canopies. Trace amounts of sagebrush may be present, however, dead skeletons will be more numerous than living sagebrush. Bunchgrass may or may not be present. Sandberg bluegrass or mat forming forbs may be present in trace amounts. Bare ground interspaces are large and connected. Soil redistribution is evident.

T5A: Transition from Tree State 5.0 to Annual State 4.0: Trigger: Catastrophic fire causing a stand replacement event will transition Annual State 4.0. Inappropriate tree removal practices with soil disturbance will cause a transition to the Annual State 4.

Slow variables: Increased production and cover of non-native annual species under tree canopies.

Threshold: Closed tree canopy with non-native annual species dominant in the understory changes the intensity, size and spatial variability of fires. Changes in plant community composition and spatial variability of vegetation due to the loss of perennial bunchgrasses and sagebrush truncate energy capture and impact nutrient cycling and distribution.

## **State and transition model**

MLRA 26  
Group 1  
Droughty Claypan  
026XY047NV

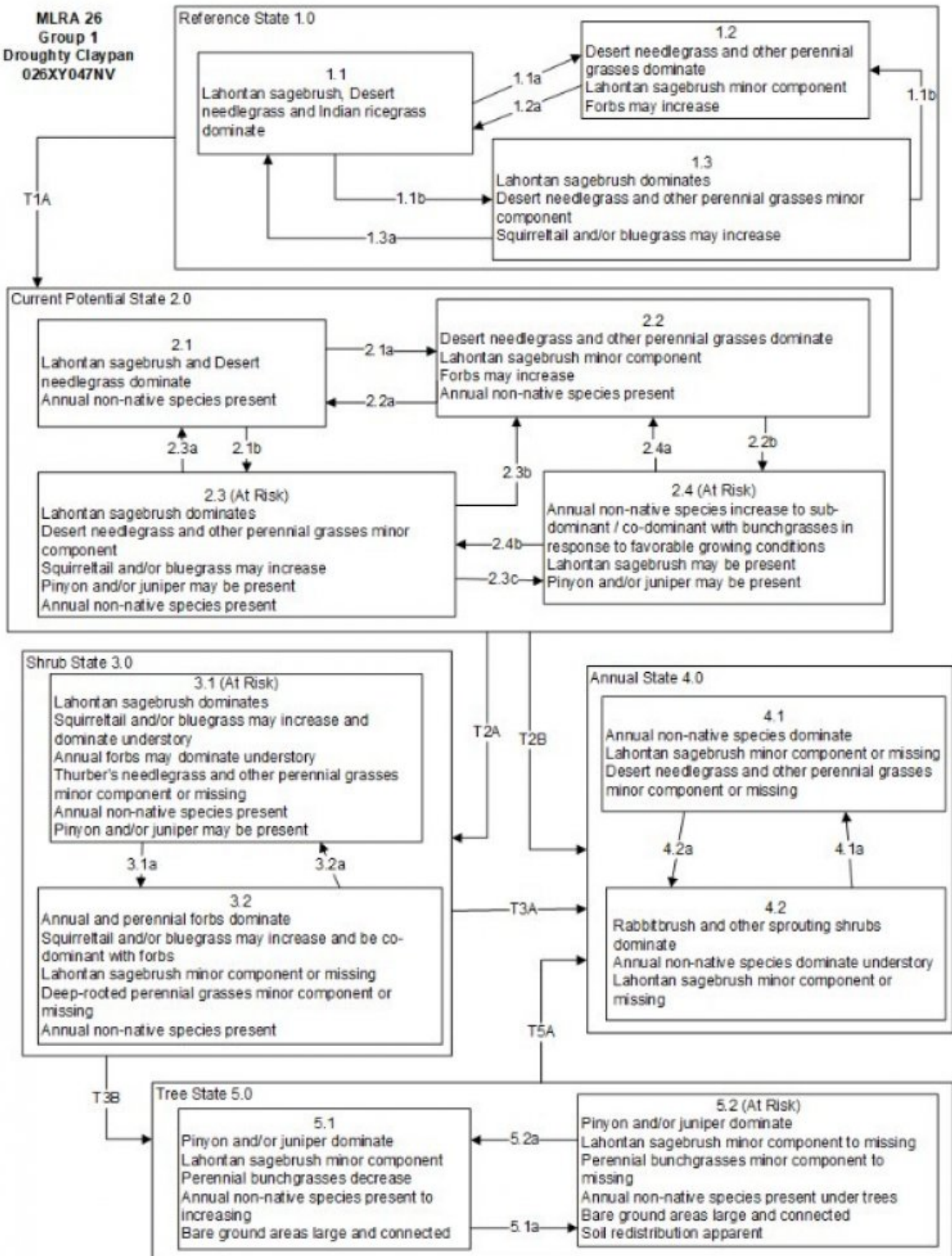


Figure 5. R026XY047NV STM

**MLRA 26  
Group 1  
Droughty Claypan  
026XY047NV  
KEY**

**Reference State 1.0 Community Phase Pathways**

- 1.1a: High severity fire significantly reduces sagebrush cover and leads to early/mid-seral community, dominated by grasses and forbs.
- 1.1b: Time and lack of disturbance such as fire. Excessive herbivory and/or long-term drought may also reduce perennial understory.
- 1.2a: Time and lack of disturbance allows for shrub regeneration.
- 1.3a: Low severity fire would create sagebrush/grass mosaic.
- 1.3b: High severity fire significantly reduces sagebrush cover leading to early/mid-seral community.

Transition T1A: Introduction of non-native annual species.

**Current Potential State 2.0 Community Phase Pathways**

- 2.1a: High severity fire significantly reduces sagebrush cover and leads to early/mid-seral community dominated by grasses and forbs; non-native annual species present.
- 2.1b: Time and lack of disturbance. Inappropriate grazing management and/or long-term drought may also reduce perennial understory.
- 2.2a: Time and lack of disturbance allows for regeneration of sagebrush.
- 2.2b: Fall and spring growing season conditions that favors the germination and production of non-native annual grasses. 2.4 may be a transitory plant community.
- 2.3a: Low severity fire creates sagebrush/grass mosaic, herbivory or combinations. Brush management with minimal soil disturbance reduces sagebrush.
- 2.3b: High severity fire significantly reduces sagebrush cover leading to early mid-seral community. Brush management with minimal soil disturbance reduces sagebrush.
- 2.3c: Fall and spring growing season conditions that favors the germination and production of non-native annual grasses. 2.4 may be a transitory plant community.
- 2.4a: Growing season conditions favoring perennial bunchgrass production and reduced cheatgrass production.
- 2.4b: Growing season conditions favoring perennial bunchgrass production and reduced cheatgrass production.

Transition T2A: Time and lack of disturbance and/or inappropriate grazing management (to 3.1).

Transition T2B: Fire or brush management causing severe soil disturbance.

**Shrub State 3.0 Community Phase Pathways**

- 3.1a: Fire.
- 3.2a: Time and lack of disturbance (unlikely/may take many years).

Transition T3A: Catastrophic fire and/or treatments that disturb the existing plant community.

Transition T3B: Time and lack of disturbance allows for maturation of the tree community.

**Annual State 4.0 Community Phase Pathways**

- 4.1a: Time and lack of disturbance.
- 4.2a: Fire.

**Tree State 5.0 Community Phase Pathways**

- 5.1a: Time and lack of disturbance allows for maturation of tree community.
- 5.2a: Tree thinning treatment (typically for fuels management).

Transition T5A: Catastrophic fire.

**Figure 6. R026XY047NV STM Key**

**State 1  
Reference Plant Community**

**Community 1.1  
Reference Plant Community**

The reference plant community is dominated by Lahontan sagebrush and desert needlegrass. Potential vegetative composition is about 40% grasses, 5% forbs and 55% shrubs.

**Table 5. Annual production by plant type**

Plant Type	Low (Kg/Hectare)	Representative Value (Kg/Hectare)	High (Kg/Hectare)
Shrub/Vine	92	123	185
Grass/Grasslike	67	90	135
Forb	9	11	17
<b>Total</b>	<b>168</b>	<b>224</b>	<b>337</b>

## Additional community tables

Table 6. Community 1.1 plant community composition

Group	Common Name	Symbol	Scientific Name	Annual Production (Kg/Hectare)	Foliar Cover (%)
<b>Grass/Grasslike</b>					
1	<b>Primary Perennial Grasses</b>			49–112	
	desert needlegrass	ACSP12	<i>Achnatherum speciosum</i>	34–67	–
	Indian ricegrass	ACHY	<i>Achnatherum hymenoides</i>	11–34	–
	squirreltail	ELEL5	<i>Elymus elymoides</i>	4–11	–
2	<b>Secondary Perennial Grasses</b>			4–11	
	Sandberg bluegrass	POSE	<i>Poa secunda</i>	1–7	–
<b>Forb</b>					
3	<b>Perennial</b>			4–18	
	aster	ASTER	<i>Aster</i>	1–7	–
	balsamroot	BALSA	<i>Balsamorhiza</i>	1–7	–
	phlox	PHLOX	<i>Phlox</i>	1–7	–
4	<b>Annual</b>			1–11	
<b>Shrub/Vine</b>					
5	<b>Primary Shrubs</b>			76–141	
	little sagebrush	ARARL3	<i>Artemisia arbuscula ssp. longicaulis</i>	56–90	–
	shadscale saltbush	ATCO	<i>Atriplex confertifolia</i>	11–22	–
	bud sagebrush	PIDE4	<i>Picrothamnus desertorum</i>	4–18	–
	spiny hopsage	GRSP	<i>Grayia spinosa</i>	4–11	–
6	<b>Secondary Shrubs</b>			4–18	
	fourwing saltbush	ATCA2	<i>Atriplex canescens</i>	2–4	–
	yellow rabbitbrush	CHVI8	<i>Chrysothamnus viscidiflorus</i>	2–4	–
	Nevada jointfir	EPNE	<i>Ephedra nevadensis</i>	2–4	–
	broom snakeweed	GUSA2	<i>Gutierrezia sarothrae</i>	2–4	–
	winterfat	KRLA2	<i>Krascheninnikovia lanata</i>	2–4	–
	littleleaf horsebrush	TEGL	<i>Tetradymia glabrata</i>	2–4	–

## Animal community

### Livestock Interpretations:

This site is suited for livestock grazing. Grazing management should be keyed to Desert needlegrass and Indian ricegrass. Desert needlegrass produces considerable basal foliage and is good forage while young. Young desert needlegrass is palatable to all classes of livestock. Mature herbage is moderately grazed by horses and cattle but rarely grazed by sheep. Indian ricegrass has good forage value for domestic sheep, cattle and horses. It supplies a source of green feed before most other native grasses have produced much new growth. Lahontan sagebrush is considered a valuable browse plant during the spring, fall and winter months. In some areas it is of little value in

winter due to heavy snow.

Stocking rates vary over time depending upon season of use, climate variations, site, and previous and current management goals. A safe starting stocking rate is an estimated stocking rate that is fine tuned by the client by adaptive management through the year and from year to year.

#### Wildlife Interpretations:

Lahontan sagebrush is considered a valuable browse plant during the spring, fall and winter months. In some areas it is of little value in winter due to heavy snow. Mule deer utilize and sometimes prefer Lahontan sagebrush, particularly in winter and early spring. Desert needlegrass and Indian ricegrass are important forage species for several wildlife species.

### Hydrological functions

Runoff is medium to very high. Permeability is slow to moderately slow.

### Recreational uses

Aesthetic value is derived from the diverse floral and faunal composition and the colorful flowering of wild flowers and shrubs during the spring and early summer. This site offers rewarding opportunities to photographers and for nature study. This site is used for camping and hiking and has potential for upland and big game hunting.

### Other products

Indian ricegrass was traditionally eaten by some Native American peoples. The Paiutes used seed as a reserve food source.

### Other information

Desert needlegrass seeds are easily germinated and have potential for commercial use. Desert needlegrass may be used for groundcover in areas of light disturbance, but it is susceptible to excessive trampling. Indian ricegrass is well-suited for surface erosion control and desert revegetation although it is not highly effective in controlling sand movement.

### Type locality

Location 1: Storey County, NV	
Township/Range/Section	T19N R21E S27
General legal description	About 1/2 mile south of Lockwood Landfill. Virginia Range, Storey County, Nevada. This site also occurs in Washoe County.

### Other references

Fire Effects Information System (Online; <http://www.fs.fed.us/database/feis/plants/>).

USDA-NRCS Plants Database (Online; <http://www.plants.usda.gov>).

### Contributors

DK/FR/GKB  
Tamzen Stringham  
Patti Novak-Echenique

### Approval

Kendra Moseley, 4/10/2024

## Rangeland health reference sheet

Interpreting Indicators of Rangeland Health is a qualitative assessment protocol used to determine ecosystem condition based on benchmark characteristics described in the Reference Sheet. A suite of 17 (or more) indicators are typically considered in an assessment. The ecological site(s) representative of an assessment location must be known prior to applying the protocol and must be verified based on soils and climate. Current plant community cannot be used to identify the ecological site.

Author(s)/participant(s)	P NOVAK-ECHENIQUE
Contact for lead author	State Rangeland Management Specialist
Date	07/12/2012
Approved by	Kendra Moseley
Approval date	
Composition (Indicators 10 and 12) based on	Annual Production

## Indicators

- 1. Number and extent of rills:** Rills are none to rare. A few rills can be expected on steeper slopes in areas subjected to summer convection storms or rapid spring snowmelt.

---
- 2. Presence of water flow patterns:** Waterflow patterns are rare to few (short <3m, disconnected) and can be expected in areas recently subjected to summer convection storms or rapid snowmelt.

---
- 3. Number and height of erosional pedestals or terracettes:** Pedestals are none to rare. Occurrence is usually limited to areas of waterflow patterns. Frost heaving of shallow rooted plants should not be considered a "normal" condition.

---
- 4. Bare ground from Ecological Site Description or other studies (rock, litter, lichen, moss, plant canopy are not bare ground):** Bare Ground  $\pm$  50% depending on amount of surface rock fragments

---
- 5. Number of gullies and erosion associated with gullies:** None

---
- 6. Extent of wind scoured, blowouts and/or depositional areas:** None

---
- 7. Amount of litter movement (describe size and distance expected to travel):** Fine litter (foliage from grasses and annual & perennial forbs) expected to move distance of slope length during intense summer convection storms or rapid snowmelt events. Persistent litter (large woody material) will remain in place except during large rainfall events.

---
- 8. Soil surface (top few mm) resistance to erosion (stability values are averages - most sites will show a range of values):** Soil stability values should be 3 to 6 on most soil textures found on this site. (To be field tested.)

---

9. **Soil surface structure and SOM content (include type of structure and A-horizon color and thickness):** Surface structure is typically moderate fine and medium subangular blocky. Soil surface colors are pale browns and are typified by an ochric epipedon. Organic matter of the surface 2 to 3 inches is typically 1 to 1.5 percent dropping off quickly below. Organic matter content can be more or less depending on micro-topography.
- 
10. **Effect of community phase composition (relative proportion of different functional groups) and spatial distribution on infiltration and runoff:** Deep-rooted bunchgrasses (desert needlegrass, Indian ricegrass) slow runoff and increase infiltration. Shrub canopy and associated litter break raindrop impact and provide opportunity for snow catch on site.
- 
11. **Presence and thickness of compaction layer (usually none; describe soil profile features which may be mistaken for compaction on this site):** Compacted layers are none. Subsoil argillic horizons are not to be interpreted as compacted.
- 
12. **Functional/Structural Groups (list in order of descending dominance by above-ground annual-production or live foliar cover using symbols: >>, >, = to indicate much greater than, greater than, and equal to):**
- Dominant: Deep-rooted, cool season, perennial bunchgrasses
- Sub-dominant: low shrubs (Lahontan sagebrush) >associated shrubs >deep-rooted, cool season, perennial forbs=shallow-rooted, cool season, perennial bunchgrasses>fibrous, shallow-rooted, cool season, perennial and annual forbs > shallow-rooted, cool season perennial bunchgrasses
- Other:
- Additional:
- 
13. **Amount of plant mortality and decadence (include which functional groups are expected to show mortality or decadence):** Dead branches within individual shrubs common and standing dead shrub canopy material may be as much as 25% of total woody canopy; some of the mature bunchgrasses (<20%) have dead centers.
- 
14. **Average percent litter cover (%) and depth ( in):** Reference Plant Community: Under canopy and between plant interspaces (10-25%) and litter depth is < ¼ inch.
- 
15. **Expected annual annual-production (this is TOTAL above-ground annual-production, not just forage annual-production):** For normal or average growing season (through mid-June) ± 200 lbs/ac; Favorable years ± 300 lbs/ac and unfavorable years ±150 lbs/ac
- 
16. **Potential invasive (including noxious) species (native and non-native). List species which BOTH characterize degraded states and have the potential to become a dominant or co-dominant species on the ecological site if their future establishment and growth is not actively controlled by management interventions. Species that become dominant for only one to several years (e.g., short-term response to drought or wildfire) are not invasive plants. Note that unlike other indicators, we are describing what is NOT expected in the reference state**

**for the ecological site:** Potential invaders include cheatgrass, annual mustards, halogeton, and Russian thistle.

---

17. **Perennial plant reproductive capability:** All functional groups should reproduce in average (or normal) and above average growing season years. Reduced growth and reproduction occur during extreme or extended drought periods.
-