

## Ecological site R027XY018NV GRAVELLY LOAM 4-8 P.Z.

Last updated: 6/03/2024  
Accessed: 11/21/2024

---

### General information

**Provisional.** A provisional ecological site description has undergone quality control and quality assurance review. It contains a working state and transition model and enough information to identify the ecological site.

### MLRA notes

Major Land Resource Area (MLRA): 027X–Fallon-Lovelock Area

#### Physiography

Found in the Great Basin Section of the Basin and Range Province of the Intermontane Plateaus this area is characterized by isolated uplifted fault block mountain ranges trending north to south that are separated by broad, hydrologically closed basins. The entire area occurs in the rain-shadow of the Sierra Nevada mountains and is influenced by Pleistocene Lake Lahontan which reached its most recent high stand about 12,000 years ago. There is substantial evidence suggesting the western Great Basin has been the site of pluvial-interpluvial cycles for at least the past two million years.

The mountains and valleys are dissected by the Humboldt, Truckee, Carson, and Walker Rivers and their tributaries, all of which terminate within MLRA 27. Extensive playas can be found throughout this area and are the result of drying of ancient Lake Lahontan. Elevation generally ranges from 3,300 to 5,900 feet (1,005 to 1,800 meters) in valleys, but on some mountain peaks it is more than 7,870 feet (2,400 meters).

#### Geology

Landforms and soils of this MLRA have been heavily influenced by fluctuating lake level over the last 40,000 years. There is a level line evident on the higher slopes marking the former extent of glacial Lake Lahontan. Almost half of this area has surface deposits of alluvial valley fill influenced by lacustrine sediment. The rest has andesite and basalt rocks of different ages. Mesozoic and Tertiary intrusives are concentrated along the western border of the area, and Lower Volcanic Rocks (17 to 43 million years old) are common on the eastern side of the area. Also, some scattered outcrops of Mesozoic sedimentary and volcanic rocks and tuffaceous sedimentary rocks are in the mountains within the interior of this MLRA.

#### Climate

The average annual precipitation is 5 to 10 inches (125 to 255 millimeters) in most of the area but is as much as 19 inches (485 millimeters) on high mountain slopes. Most of the rainfall occurs as high-intensity, convective thunderstorms during the growing season. The amount of precipitation is very low from summer to midautumn. The precipitation in winter occurs mainly as snow. The average annual temperature is 43 to 54 degrees F (6 to 12 degrees C). The freeze-free period averages 155 days and ranges from 110 to 195 days, decreasing in length with elevation.

#### Water

The amount of precipitation is very low, and water for irrigation is obtained principally from diversions on the four large rivers in the area and from water stored in the Lahontan, Rye Patch, and Weber Reservoirs. Pyramid Lake and Walker Lakes are terminal lakes for the Truckee and Walker Rivers, respectively. Much of the annual flow of both rivers is diverted for irrigation, causing lake levels to fall and levels of dissolved salts to increase causing problems for the native Lahontan cutthroat trout.

#### Soils

The dominant soil orders are Aridisols and Entisols. The soils in the area are predominantly a mesic temperature

regime, aridic moisture regime, and have a mixed mineralogy. They are generally well drained, loamy or sandy, commonly skeletal, and shallow to very deep. Accumulation of salts, tufa deposits, and eolian sediments with soluble salts over lacustrine deposits influence most of the soils in the basin landforms of this MLRA. Soils on bedrock-controlled landforms are typically comprised of volcanic or tuffaceous sedimentary colluvium over residuum.

### Biological Resources

This area supports extensive areas of salt-desert shrub vegetation. Shadscale and Bailey's greasewood are widespread, occurring both individually and together. Grasses are generally sparse, although Indian ricegrass is prominent, especially on the sandy soils. Fourwing saltbush, winterfat, spiny hopsage, wolfberry, ephedra, dalea, and bud sagebrush are common shrubs. Basin wildrye, creeping wildrye, alkali sacaton, saltgrass, black greasewood, rubber rabbitbrush, and big saltbush are important plants on saline bottom lands and terraces. A few marsh areas support cattail, bulrushes, sedges, and rushes. Big sagebrush, along with scattered Utah juniper and singleleaf pinyon, is associated with Thurber needlegrass, desert needlegrass, Sandberg bluegrass, and squirreltail on the higher elevation piedmont slopes and mountains.

### Ecological site concept

The Gravelly Loam 4-8 P.Z. site occurs on fan remnants, alluvial fans, fan skirts, and lake terraces. Slopes are less than 50 percent, but slope gradients of 2 to 15 percent are most typical. Elevations are 3800 to 7000 feet. The soils are typically very deep. The soil surface is gravelly or cobbly and moderately coarse in texture. Desert pavement is common in some areas.

### Associated sites

|             |                                      |
|-------------|--------------------------------------|
| R027XY008NV | <b>DROUGHTY LOAM 8-10 P.Z.</b>       |
| R027XY010NV | <b>BEACH TERRACE</b>                 |
| R027XY013NV | <b>LOAMY 4-8 P.Z.</b>                |
| R027XY024NV | <b>SODIC TERRACE</b>                 |
| R027XY050NV | <b>COARSE GRAVELLY LOAM 4-8 P.Z.</b> |

### Similar sites

|             |  |
|-------------|--|
| R027XY015NV | <b>STONY LOAM 4-8 P.Z.</b><br>PLJA important grass; more productive site                           |
| R027XY019NV | <b>STONY SLOPE 4-8 P.Z.</b><br>SABA14-ATCO codominant shrubs                                       |
| R027XY013NV | <b>LOAMY 4-8 P.Z.</b><br>ATCO-PIDE4 codominant shrubs; SABA14 minor shrub, if present              |
| R027XY010NV | <b>BEACH TERRACE</b><br>Less productive site; SABA14 minor shrub, if present                       |
| R027XY017NV | <b>SOUTH SLOPE 4-8 P.Z.</b><br>ACSP12 dominant grass   |
| R027XY050NV | <b>COARSE GRAVELLY LOAM 4-8 P.Z.</b><br>More productive site; soils not extremely gravelly, cobbly |
| R027XY043NV | <b>COARSE GRAVELLY LOAM 3-5 P.Z.</b><br>LYSH-SABA14 codominant shrubs with ATCO                    |

Table 1. Dominant plant species

|            |  |
|------------|--|
| Tree       | Not specified  |
| Shrub      | (1) <i>Atriplex confertifolia</i><br>(2) <i>Sarcobatus baileyi</i> |
| Herbaceous | (1) <i>Achnatherum hymenoides</i>                                  |

## Physiographic features

The Gravelly Loam 4-8 P.Z. site occurs on fan remnants, alluvial fans, fan skirts, and lake terraces. Slopes range from 0 to 50 percent, but slope gradients of 2 to 15 percent are most typical. Elevations are 3800 to 7000 feet.

**Table 2. Representative physiographic features**

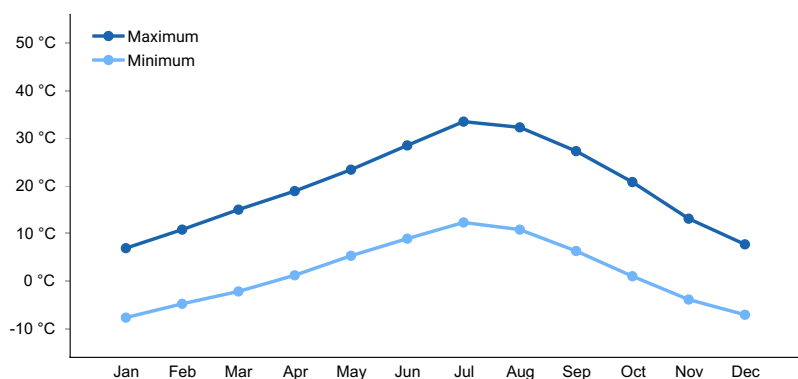
|                    |  |
|--------------------|--|
| Landforms          | (1) Fan remnant<br>(2) Alluvial fan<br>(3) Fan skirt |
| Runoff class       | Very low to very high                                |
| Flooding duration  | Very brief (4 to 48 hours)                           |
| Flooding frequency | Rare to occasional                                   |
| Ponding frequency  | None   |
| Elevation          | 1,158–2,134 m  |
| Slope              | 0–50%  |
| Water table depth  | 183 cm   |
| Aspect             | Aspect is not a significant factor                   |

## Climatic features

The climate associated with this site is arid, characterized by cool, moist winters and hot, dry summers. Average annual precipitation is 4 to 8 inches. Mean annual air temperature is 44 to 57 degrees F. The average growing season is about 80 to 150 days.

**Table 3. Representative climatic features**

|                               |          |
|-------------------------------|----------|
| Frost-free period (average)   | 150 days |
| Freeze-free period (average)  |          |
| Precipitation total (average) | 203 mm   |



**Figure 1. Monthly average minimum and maximum temperature**

## Influencing water features

There are no influencing water features associated with this site.

## Soil features

The soils are very deep. The soils are derived from alluvium. These soils are well drained to excessively drained and available water capacity is very low to high. Surface runoff is very low to very high. The soil surface is gravelly

or cobbly and moderately coarse in texture. Desert pavement is common in some areas. Potential for sheet and rill erosion is low due to rock fragments on soil surface. Soils having a high percentage of rock fragments on the surface are less subject to erosion. Soil stability values should be 2 to 4 on most soil textures found on this site. Areas of this site occurring on soils that have a physical crust will probably have stability values less than 3. Soils having thin surface sand sheet will have lower stability values. The soils that are associated with this site are Aboten, Appian, Bango, Bedwyr, Beoska, Biddleman, Biga, Blackhawk, Bluewing, Buckaroo, Bundorf, Chilper, Cleaver, Coldent, Deefan, Dorper, Fireball, Frines, Ganaflan, Genegraf, Hardhat, Hough, Jerval, Juva, Kleinbush, Labkey, Labou, Malpais, Mazuma, Otomo, Patna, Perazzo, Pirouette, Rawe, Rednik, Rezave, Ricert, Risue, Smaug, Soda Lake, Stingdorn, Sutcliff, Tocan, Toulon, Trocken, Ultra, Unionville, Vylach, Whirlo, and Woolsey.

**Table 4. Representative soil features**

|  |   |
|--|---|
| Parent material  | (1) Alluvium  |
| Surface texture  | (1) Gravelly sandy loam<br>(2) Very gravelly sandy loam |
| Family particle size                                     | (1) Loamy   |
| Drainage class   | Well drained to excessively drained                     |
| Permeability class                                       | Slow to moderately rapid                                |
| Soil depth   | 183 cm  |
| Surface fragment cover <=3"                              | 7–70%   |
| Surface fragment cover >3"                               | 1–34%   |
| Available water capacity<br>(0-101.6cm)                  | 2.03–17.02 cm   |
| Calcium carbonate equivalent<br>(0-101.6cm)              | 0–15%   |
| Electrical conductivity<br>(0-101.6cm)                   | 0–32 mmhos/cm   |
| Sodium adsorption ratio<br>(0-101.6cm)                   | 0–12  |
| Soil reaction (1:1 water)<br>(0-101.6cm)                 | 6.6–9   |
| Subsurface fragment volume <=3"<br>(Depth not specified) | 2–70%   |
| Subsurface fragment volume >3"<br>(Depth not specified)  | 0–33%   |

## Ecological dynamics

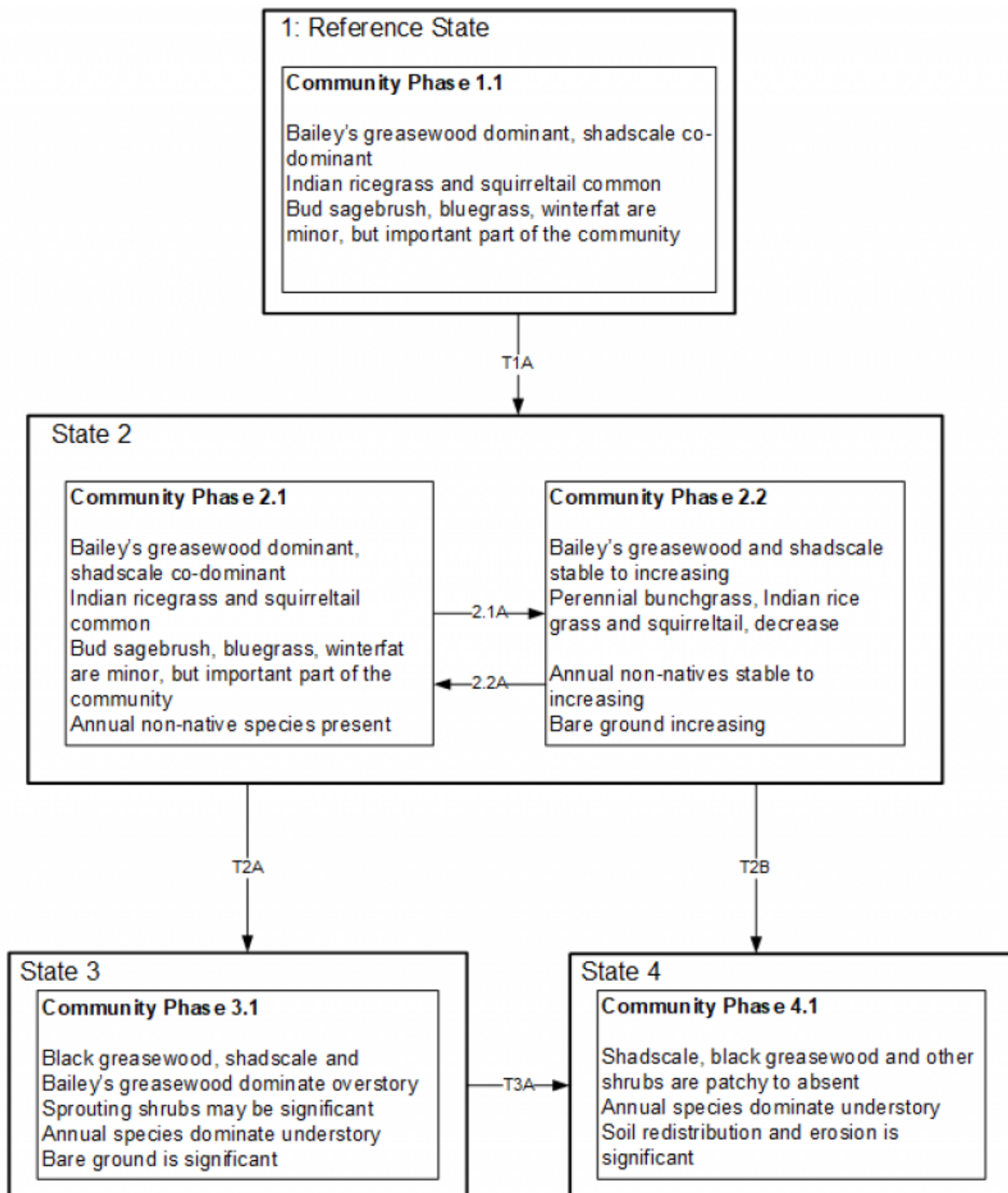
As ecological condition deteriorates, Bailey's greasewood and shadscale increase as Indian ricegrass and other palatable grasses and shrubs decrease. Species most likely to invade this site are cheatgrass, galleta, Douglas' rabbitbrush, horsebrush, burrobrush, snakeweed, halogeton, Russian thistle and annual mustards.

### Fire Ecology:

The mean fire return interval for shadscale-greasewood communities range from 35 to 100 years. Saltdesert-shrub communities are usually unaffected by fire because of low fuel loads, although a year of exceptionally heavy winter rains can generate fuels by producing a heavy stand of annual forbs and grasses. Increased presence of non-native annual grasses, such as cheatgrass, can alter fire regimes by increasing fire frequency under wet to near-normal summer moisture conditions. When fire does occur, the effect on the ecosystem may be extreme. Bailey's greasewood may be killed by severe fires, but it commonly sprouts soon after low to moderate-severity fire. Budsage is killed by fire. Budsage communities rarely burn due to insufficient fire loads. Indian ricegrass can be killed by fire, depending on severity and season of burn. Indian ricegrass reestablishes on burned sites through seed dispersed from adjacent unburned areas. Bottlebrush squirreltail's small size, coarse stems, and sparse leafy material aid in its tolerance of fire. Postfire regeneration occurs from surviving root crowns and from on- and off-site

seed sources. Frequency of disturbance greatly influences postfire response of bottlebrush squirreltail. Undisturbed plants within a 6 to 9 year age class generally contain large amounts of dead material, increasing bottlebrush squirreltail's susceptibility to fire. Sandberg bluegrass is generally unharmed by fire. It produces little litter, and its small bunch size and sparse litter reduces the amount of heat transferred to perennating buds in the soil. Its rapid maturation in the spring also reduces fire damage, since it is dormant when most fires occur.

## State and transition model



Reference State: 1.0

State 1.0 is representative of the natural range of variability under pristine conditions. The site is dominated by

deep-rooted cool season, perennial bunchgrasses and drought tolerant shrubs with high root to shoot ratios. State dynamics are maintained by interactions between climatic patterns and disturbance regimes. Negative feedbacks enhance ecosystem resilience and contribute to the overall stability. These include the presence of all structural and functional groups, low fine fuel loads, and retention of organic matter and nutrients. Under natural condition this site is very stable, with little variation in plant community composition. Plant community changes are primarily driven by drought. Wet years will increase grass production, while drought years will reduce production. Shrub production will also increase during wet years; however, extreme growing season wet periods has been shown to cause shadscale death. Fire is rare and not a important driver in this community.

#### Community Phase 1.1:

Community phase 1.1 is stable and long-lived. It is dominated by shadscale and black greasewood with an understory of Indian ricegrass and squirreltail. Bud sagebrush, Bailey's greasewood and inland saltgrass are important, but minor components within this community. Community phase changes are primarily a function of chronic drought. Drought favors shrubs over perennial bunchgrasses. However, long-term drought will result in an overall decline in plant community production, regardless of functional group. Extreme growing season wet periods may also reduce the shadscale component. Fire is very infrequent to non-existent.

#### T1A: Transition from Reference State 1.0 to Current Potential State 2.0:

Trigger: This transition is caused by the introduction of non-native annual plants, such as halogeton, mustards and cheatgrass.

Slow variables: Over time the annual non-native species will increase within the community.

Threshold: Any amount of introduced non-native species causes an immediate decrease in the resilience of the site. Annual non-native species cannot be easily removed from the system and have the potential to significantly alter disturbance regimes from their historic range of variation.

#### Current Potential State 2.0:

This state is similar to the Reference State 1.0. Ecological function has not changed, however the resiliency of the state has been reduced by the presence of invasive weeds. Non-natives may increase in abundance but will not become dominant within this State. These non-natives can be highly flammable and can promote fire where historically fire had been infrequent. Negative feedbacks enhance ecosystem resilience and contribute to the stability of the state. These feedbacks include the presence of all structural and functional groups, low fine fuel loads, and retention of organic matter and nutrients. Positive feedbacks decrease ecosystem resilience and stability of the state. These include the non-natives' high seed output, persistent seed bank, rapid growth rate, ability to cross pollinate, and adaptations for seed dispersal.

#### Community Phase 2.1:

This community is compositionally similar to the Reference State Community Phase 1.1 with the presence of non-native species in trace amounts. This community is characterized by shadscale and black greasewood with an understory of Indian ricegrass, squirreltail and non-native annuals. Community phase changes are primarily a function of chronic drought or extreme wet periods. Fire is infrequent and patchy due to low fuel loads.

Community Phase Pathway 2.1a: Long-term drought and excessive growing season grazing favor shrubs over perennial bunchgrass.

#### Community Phase 2.2:

Greasewood increase while Indian ricegrass and other deep-rooted perennial grasses decrease. Bare ground increases along with non-native annuals. Prolonged drought may lead to an overall decline in the plant community. Prolonged wet periods will decrease the shadscale component.

Community Phase Pathway 2.2a: Release from drought and/or appropriate grazing management that facilitates an increase in perennial grasses and desirable shrub species.

#### T2A: Transition from Current Potential State 2.0 to Shrub State 3.0:

Trigger: Long-term inappropriate grazing and/or long-term drought will decrease or eliminate deep rooted perennial bunchgrasses and favor shrub growth and establishment.

Slow variables: Long term decrease in deep-rooted perennial grass density.

Threshold: Loss of deep-rooted perennial bunchgrasses changes nutrient cycling, nutrient redistribution, and reduces soil organic matter.

T2B: Transition from Current Potential State 2.0 to Annual State 4.0:

Trigger: Fire and/or soil disturbing treatments such as drill seeding and plowing. An unusually wet spring may facilitate the increased germination and production of cheatgrass leading to its dominance within the community.

Slow variables: Increased production and cover of non-native annual species.

Threshold: Loss of deep-rooted perennial bunchgrasses and shrubs truncates, spatially and temporally, nutrient capture and cycling within the community. Increased, continuous fine fuels from annual non-native plants modify the fire regime by changing intensity, size and spatial variability of fires.

Shrub State 3.0: This state has one community phase that is characterized by shadscale and Bailey's greasewood or a sprouting shrub overstory with very little to no understory. The site has crossed a biotic threshold and site processes are being controlled by shrubs. Shrub cover exceeds the site concept and may be decadent, reflecting stand maturity and lack of seedling establishment due to competition with mature plants. The shrub overstory dominates site resources such that soil water, nutrient capture, nutrient cycling and soil organic matter are temporally and spatially redistributed. Bare ground has increased.

Community Phase 3.1:

Decadent shrubs, Bailey's greasewood and shadscale dominate the overstory. Rabbitbrush and/or other sprouting shrubs may be a significant component. Deep-rooted perennial bunchgrasses may be present in trace amounts or absent from the community. Annual nonnative species increase. Bare ground is significant.

T3A: Transition from Shrub State 3.0 to Annual State 4.0:

Trigger: Fire and/or soil disturbing treatments such as drill seeding and plowing. An unusually wet spring may facilitate the increased germination and production of cheatgrass leading to its dominance within the community.

Slow variables: Increased production and cover of non-native annual species.

Threshold: Increased, continuous fine fuels modify the fire regime by changing intensity, size and spatial variability of fires. Changes in plant community composition and spatial variability of vegetation due to the loss of perennial bunchgrasses and shadscale truncate energy capture spatially and temporally thus impacting nutrient cycling and distribution.

Annual State 4.0: In this state, a biotic threshold has been crossed and state dynamics are driven by the dominance and persistence of the annual plant community which is perpetuated by a shortened fire return interval. The herbaceous understory is dominated by annual non-native species such as cheatgrass and halogeton. Bare ground may be abundant. Resiliency has declined and further degradation from fire facilitates a cheatgrass and sprouting shrub plant community. The fire return interval has shortened due to the dominance of cheatgrass in the understory and is a driver in site dynamics.

Community Phase 4.1:

This community is dominated by annual non-native species. Bailey's greasewood, which can sprout after fire, maybe be present in patches but are not contributing to site function. Shadscale may be increasing within the community. Annual non-native species dominated the understory. Halogeton most commonly invades these sites. Bare ground may be abundant, especially during low precipitation years. Soil erosion from wind and soil temperature are driving factors in site function.

## State 1

### Reference Plant Community

#### Community 1.1

#### Reference Plant Community

The reference plant community is dominated by Bailey's greasewood, shadscale and Indian ricegrass. Potential vegetative composition is about 25% grasses, 5% forbs and 70% shrubs. Approximate ground cover (basal and crown) is less than 20 percent. Bare ground is approximately 25 to 50%, surface rock fragments are approximately 40 to 60%, shrub canopy 15 to <20%, basal area for perennial herbaceous plants <2%. Dead branches within individual shrubs are common and standing dead shrub canopy material may be as much as 35% of total woody canopy. Some of the mature bunchgrasses commonly (approximately 25%) have dead centers. Between plant interspaces litter is less than 5% cover and the depth of litter is approximately one-fourth inch.

Table 5. Annual production by plant type

| Plant Type      | Low<br>(Kg/Hectare) | Representative Value<br>(Kg/Hectare) | High<br>(Kg/Hectare) |
|-----------------|---------------------|--------------------------------------|----------------------|
| Shrub/Vine      | 78                  | 196                                  | 314                  |
| Grass/Grasslike | 28                  | 69                                   | 112                  |
| Forb            | 6                   | 15                                   | 22                   |
| <b>Total</b>    | <b>112</b>          | <b>280</b>                           | <b>448</b>           |

## Additional community tables

Table 6. Community 1.1 plant community composition

| Group                  | Common Name                        | Symbol | Scientific Name                    | Annual Production (Kg/Hectare) | Foliar Cover (%) |
|------------------------|------------------------------------|--------|------------------------------------|--------------------------------|------------------|
| <b>Grass/Grasslike</b> |                                    |        |                                    |                                |                  |
| 1                      | <b>Primary Perennial Grasses</b>   |        |                                    | 39–115                         |                  |
|                        | Indian ricegrass                   | ACHY   | <i>Achnatherum hymenoides</i>      | 28–71                          | –                |
|                        | squirreltail                       | ELEL5  | <i>Elymus elymoides</i>            | 6–22                           | –                |
|                        | Sandberg bluegrass                 | POSE   | <i>Poa secunda</i>                 | 6–22                           | –                |
| 2                      | <b>Secondary Perennial Grasses</b> |        |                                    | 0–22                           |                  |
|                        | desert needlegrass                 | ACSP12 | <i>Achnatherum speciosum</i>       | 1–9                            | –                |
|                        | King's eyelashgrass                | BLKI   | <i>Blepharidachne kingii</i>       | 1–9                            | –                |
|                        | James' galleta                     | PLJA   | <i>Pleuraphis jamesii</i>          | 1–9                            | –                |
| <b>Forb</b>            |                                    |        |                                    |                                |                  |
| 3                      | <b>Perennial</b>                   |        |                                    | 6–28                           |                  |
|                        | buckwheat                          | ERIOG  | <i>Eriogonum</i>                   | 1–6                            | –                |
|                        | globemallow                        | SPHAE  | <i>Sphaeralcea</i>                 | 1–6                            | –                |
|                        | princesplume                       | STANL  | <i>Stanleya</i>                    | 1–6                            | –                |
| <b>Shrub/Vine</b>      |                                    |        |                                    |                                |                  |
| 4                      | <b>Primary Perennial Shrubs</b>    |        |                                    | 113–211                        |                  |
|                        | shadscale saltbush                 | ATCO   | <i>Atriplex confertifolia</i>      | 43–84                          | –                |
|                        | bud sagebrush                      | PIDE4  | <i>Picrothamnus desertorum</i>     | 15–43                          | –                |
|                        | Forb, perennial                    | 2FP    | <i>Forb, perennial</i>             | 2–11                           | –                |
|                        | buckwheat                          | ERIOG  | <i>Eriogonum</i>                   | 1–6                            | –                |
|                        | globemallow                        | SPHAE  | <i>Sphaeralcea</i>                 | 1–6                            | –                |
|                        | princesplume                       | STANL  | <i>Stanleya</i>                    | 1–6                            | –                |
| 5                      | <b>Secondary Perennial Shrubs</b>  |        |                                    | 15–43                          |                  |
|                        | yellow rabbitbrush                 | CHVI8  | <i>Chrysothamnus viscidiflorus</i> | 1–9                            | –                |
|                        | Nevada jointfir                    | EPNE   | <i>Ephedra nevadensis</i>          | 1–9                            | –                |
|                        | spiny hopsage                      | GRSP   | <i>Grayia spinosa</i>              | 1–9                            | –                |
|                        | winterfat                          | KRLA2  | <i>Krascheninnikovia lanata</i>    | 1–9                            | –                |
|                        | Shockley's desert-thorn            | LYSH   | <i>Lycium shockleyi</i>            | 1–9                            | –                |
|                        | littleleaf horsebrush              | TEGL   | <i>Tetradymia glabrata</i>         | 1–9                            | –                |

## Animal community

Livestock Interpretations:

This site is suited for livestock grazing. Grazing management should be keyed to Indian ricegrass and all other perennial grass species production. Indian ricegrass is highly palatable to all classes of livestock in both green and



cured condition. It supplies a source of green feed before most other native grasses have produced much new growth. Bottlebrush squirreltail is very palatable winter forage for domestic sheep of Intermountain ranges. Domestic sheep relish the green foliage. Overall, bottlebrush squirreltail is considered moderately palatable to livestock. Bluegrass is a widespread forage grass. It is one of the earliest grasses in the spring and is sought by domestic livestock and several wildlife species. Sandberg bluegrass is a palatable species, but its production is closely tied to weather conditions. It produces little forage in drought years, making it a less dependable food source than other perennial bunchgrasses.

Bailey's greasewood is an important winter browse plant for domestic sheep and cattle. It also receives light to moderate use by domestic sheep and cattle during spring and summer months. Greasewood contains soluble sodium and potassium oxalates that may cause poisoning and death in domestic sheep and cattle if large amounts are consumed in a short time. Shadscale is a valuable browse species, providing a source of palatable, nutritious forage for a wide variety of livestock. Shadscale provides good browse for domestic sheep. Shadscale leaves and seeds are an important component of domestic sheep and cattle winter diets. Budsage is palatable and nutritious forage for domestic sheep in the winter and spring although it is known to cause mouth sores in lambs. Budsage can be poisonous or fatal to calves when eaten in quantity. Budsage, while desired by cattle in spring, is poisonous to cattle when consumed alone.

Stocking rates vary over time depending upon season of use, climate variations, site, and previous and current management goals. A safe starting stocking rate is an estimated stocking rate that is fine tuned by the client by adaptive management through the year and from year to year.

#### Wildlife Interpretations:

Bailey's greasewood is an important winter browse plant for big game animals and a food source for many other wildlife species. It also receives light to moderate use by mule deer and pronghorn during spring and summer months. Shadscale is a valuable browse species, providing a source of palatable, nutritious forage for a wide variety of wildlife particularly during spring and summer before the hardening of spiny twigs. It supplies browse, seed, and cover for birds, small mammals, rabbits, deer, and pronghorn antelope. Budsage is palatable, nutritious forage for upland game birds, small game and big game in winter. Budsage is rated as "regularly, frequently, or moderately taken" by mule deer in Nevada in winter and is utilized by bighorn sheep in summer, but the importance of budsage in the diet of bighorns is not known. Bud sage comprises 18 – 35% of a Pronghorn's diet during the spring where it is available. Chukar will utilize the leaves and seeds of bud sage. Budsage is highly susceptible to effects of browsing. It decreases under browsing due to year-long palatability of its buds and is particularly susceptible to browsing in the spring when it is physiologically most active.

## Hydrological functions

Rills are rare on this site. A few can be expected on steeper slopes in areas subjected to summer convection storms or rapid spring snowmelt. Water flow patterns are often numerous in areas subjected to summer convection storms. Flow patterns are short and stable. Pedestals are rare with occurrence typically limited to area within water flow patterns. Frost heaving of shallow rooted plants should not be considered as normal condition. Gullies are rare in areas of this site that occur on stable landforms. Where this site occurs on inset fans, gullies and head cuts associated with ephemeral channel entrenchment are common. Gullies and head cuts should be healing or stable. Fine litter (foliage from grasses and annual and perennial forbs) are expected to move the distance of slope length during intense summer convection storms or rapid snowmelt events. Persistent litter (large woody material) will remain in place except during catastrophic events. Sparse shrub canopy and associated litter break raindrop impact. Medium to fine textured surface soils have moderate to slow infiltration and medium runoff.

## Recreational uses

This site offers opportunities for photography and nature study. This site has potential for off-road vehicle use and hiking.

## Other products

The leaves, seeds and stems of greasewood are edible. Shadscale seeds were used by Native Americans of Arizona, Utah and Nevada for bread and mush. Indian ricegrass was traditionally eaten by some Native American peoples. The Paiutes used seed as a reserve food source.

## Other information

Indian ricegrass is well-suited for surface erosion control and desert revegetation although it is not highly effective in controlling sand movement. Bottlebrush squirreltail is tolerant of disturbance and is a suitable species for revegetation.

## Inventory data references

NASIS soil component data.

## Type locality

|                                  |  |
|----------------------------------|--|
| Location 1: Churchill County, NV |  |
| Township/Range/Section           | T16N R29E S22  |
| General legal description        | South of Fallon, about 1½ miles east of Russell Pass, White Throne Mountains area, Churchill County, Nevada. This site also occurs in Lyon, Mineral, Pershing, Storey and Washoe County, Nevada. |
| Location 2: Churchill County, NV |  |
| Township/Range/Section           | T24N R26E S34  |
| General legal description        | About 7 miles north of Nightengale Interchange on I-80, Trinity Range, Churchill County, Nevada.   |

## Other references

Fire Effects Information System (Online; <http://www.fs.fed.us/database/feis/plants/>).

USDA-NRCS Plants Database (Online; <http://www.plants.usda.gov>).

## Contributors

DK/GD

## Approval

Kendra Moseley, 6/03/2024

## Rangeland health reference sheet

Interpreting Indicators of Rangeland Health is a qualitative assessment protocol used to determine ecosystem condition based on benchmark characteristics described in the Reference Sheet. A suite of 17 (or more) indicators are typically considered in an assessment. The ecological site(s) representative of an assessment location must be known prior to applying the protocol and must be verified based on soils and climate. Current plant community cannot be used to identify the ecological site.

|   |                                       |
|---|---------------------------------------|
| Author(s)/participant(s)                    | GK BRACKLEY                           |
| Contact for lead author                     | State Rangeland Management Specialist |
| Date  | 06/20/2006                            |
| Approved by                                 | Kendra Moseley                        |
| Approval date                               |                                       |
| Composition (Indicators 10 and 12) based on | Annual Production                     |

## Indicators

1. **Number and extent of rills:** Rills are rare. A few can be expected on steeper slopes in areas subjected to summer convection storms or rapid spring snowmelt.

---
2. **Presence of water flow patterns:** Water flow patterns are often numerous in areas subjected to summer convection storms. Flow patterns short and stable.

---
3. **Number and height of erosional pedestals or terracettes:** Pedestals are rare with occurrence typically limited to area within water flow patterns. Frost heaving of shallow rooted plants should not be considered as normal condition.

---
4. **Bare ground from Ecological Site Description or other studies (rock, litter, lichen, moss, plant canopy are not bare ground):** Bare Ground  $\pm$  25 to 50% depending on amount of surface rock fragments  $\pm$ 40 to 60%; shrub canopy up to 25%; basal area for perennial plants  $\sim$ 2%.

---
5. **Number of gullies and erosion associated with gullies:** Gullies are none to rare.

---
6. **Extent of wind scoured, blowouts and/or depositional areas:** None to slight.

---
7. **Amount of litter movement (describe size and distance expected to travel):** Fine litter (foliage from grasses and annual & perennial forbs) expected to move distance of slope length during intense summer convection storms or rapid snowmelt events. Persistent litter (large woody material) will remain in place except during catastrophic events.

---
8. **Soil surface (top few mm) resistance to erosion (stability values are averages - most sites will show a range of values):** Soil stability values should be 1 to 3 on most soil textures found on this site.

---
9. **Soil surface structure and SOM content (include type of structure and A-horizon color and thickness):** Surface structure is typically fine to medium platy or prismatic. Soil surface colors are light and soils are typified by an ochric epipedon. Organic matter of the surface 2 to 3 inches is less than to 1 percent.

---
10. **Effect of community phase composition (relative proportion of different functional groups) and spatial distribution on infiltration and runoff:** Sparse shrub canopy and associated litter break raindrop impact. Medium to fine textured surface soils have moderate to slow infiltration and medium runoff.

---
11. **Presence and thickness of compaction layer (usually none; describe soil profile features which may be mistaken for compaction on this site):** Compacted layers are not typical. Platy or massive sub-surface horizons or subsoil argillic horizons are not to be interpreted as compacted layers.

---
12. **Functional/Structural Groups (list in order of descending dominance by above-ground annual-production or live**

**foliar cover using symbols: >>, >, = to indicate much greater than, greater than, and equal to):**

Dominant: Low-statured salt desert shrubs (shadscale & Bailey's greasewood)> associated shrubs

Sub-dominant: deep-rooted, cool season, perennial bunchgrasses>shallow-rooted, cool season, perennial grasses=deep-rooted, cool season, perennial forbs=fibrous, shallow-rooted, cool season, annual and perennial forbs.

Other:

Additional:

---

13. **Amount of plant mortality and decadence (include which functional groups are expected to show mortality or decadence):** Dead branches within individual shrubs common and standing dead shrub canopy material may be as much as 35% of total woody canopy; mature bunchgrasses commonly ( $\pm 25\%$ ) have dead centers.
- 

14. **Average percent litter cover (%) and depth ( in):** Between plant interspaces (5%) and depth of litter is  $\pm \frac{1}{4}$  inch.
- 

15. **Expected annual annual-production (this is TOTAL above-ground annual-production, not just forage annual-production):** For normal or average growing season (February thru April [May])  $\pm 250$  lbs/ac; Spring moisture significantly affects total production.
- 

16. **Potential invasive (including noxious) species (native and non-native). List species which BOTH characterize degraded states and have the potential to become a dominant or co-dominant species on the ecological site if their future establishment and growth is not actively controlled by management interventions. Species that become dominant for only one to several years (e.g., short-term response to drought or wildfire) are not invasive plants. Note that unlike other indicators, we are describing what is NOT expected in the reference state for the ecological site:** Cheatgrass, halogeton, Russian thistle and annual mustards are invaders on this site. Galleta, Douglas' rabbitbrush, horsebrush, burrobrush and Bailey's greasewood are increasers on this site.
- 

17. **Perennial plant reproductive capability:** All functional groups should reproduce in above average growing season years.
-