

## Ecological site R027XY049NV COBBLY CLAYPAN 8-10 P.Z.

Last updated: 6/03/2024  
Accessed: 06/30/2024

---

### General information

**Provisional.** A provisional ecological site description has undergone quality control and quality assurance review. It contains a working state and transition model and enough information to identify the ecological site.

### MLRA notes

Major Land Resource Area (MLRA): 027X–Fallon-Lovelock Area

#### Physiography

Found in the Great Basin Section of the Basin and Range Province of the Intermontane Plateaus this area is characterized by isolated uplifted fault block mountain ranges trending north to south that are separated by broad, hydrologically closed basins. The entire area occurs in the rain-shadow of the Sierra Nevada mountains and is influenced by Pleistocene Lake Lahontan which reached its most recent high stand about 12,000 years ago. There is substantial evidence suggesting the western Great Basin has been the site of pluvial-interpluvial cycles for at least the past two million years.

The mountains and valleys are dissected by the Humboldt, Truckee, Carson, and Walker Rivers and their tributaries, all of which terminate within MLRA 27. Extensive playas can be found throughout this area and are the result of drying of ancient Lake Lahontan. Elevation generally ranges from 3,300 to 5,900 feet (1,005 to 1,800 meters) in valleys, but on some mountain peaks it is more than 7,870 feet (2,400 meters).

#### Geology

Landforms and soils of this MLRA have been heavily influenced by fluctuating lake level over the last 40,000 years. There is a level line evident on the higher slopes marking the former extent of glacial Lake Lahontan. Almost half of this area has surface deposits of alluvial valley fill influenced by lacustrine sediment. The rest has andesite and basalt rocks of different ages. Mesozoic and Tertiary intrusives are concentrated along the western border of the area, and Lower Volcanic Rocks (17 to 43 million years old) are common on the eastern side of the area. Also, some scattered outcrops of Mesozoic sedimentary and volcanic rocks and tuffaceous sedimentary rocks are in the mountains within the interior of this MLRA.

#### Climate

The average annual precipitation is 5 to 10 inches (125 to 255 millimeters) in most of the area but is as much as 19 inches (485 millimeters) on high mountain slopes. Most of the rainfall occurs as high-intensity, convective thunderstorms during the growing season. The amount of precipitation is very low from summer to midautumn. The precipitation in winter occurs mainly as snow. The average annual temperature is 43 to 54 degrees F (6 to 12 degrees C). The freeze-free period averages 155 days and ranges from 110 to 195 days, decreasing in length with elevation.

#### Water

The amount of precipitation is very low, and water for irrigation is obtained principally from diversions on the four large rivers in the area and from water stored in the Lahontan, Rye Patch, and Weber Reservoirs. Pyramid Lake and Walker Lakes are terminal lakes for the Truckee and Walker Rivers, respectively. Much of the annual flow of both rivers is diverted for irrigation, causing lake levels to fall and levels of dissolved salts to increase causing problems for the native Lahontan cutthroat trout.

#### Soils

The dominant soil orders are Aridisols and Entisols. The soils in the area are predominantly a mesic temperature

regime, aridic moisture regime, and have a mixed mineralogy. They are generally well drained, loamy or sandy, commonly skeletal, and shallow to very deep. Accumulation of salts, tufa deposits, and eolian sediments with soluble salts over lacustrine deposits influence most of the soils in the basin landforms of this MLRA. Soils on bedrock-controlled landforms are typically comprised of volcanic or tuffaceous sedimentary colluvium over residuum.

### Biological Resources

This area supports extensive areas of salt-desert shrub vegetation. Shadscale and Bailey's greasewood are widespread, occurring both individually and together. Grasses are generally sparse, although Indian ricegrass is prominent, especially on the sandy soils. Fourwing saltbush, winterfat, spiny hopsage, wolfberry, ephedra, dalea, and bud sagebrush are common shrubs. Basin wildrye, creeping wildrye, alkali sacaton, saltgrass, black greasewood, rubber rabbitbrush, and big saltbush are important plants on saline bottom lands and terraces. A few marsh areas support cattail, bulrushes, sedges, and rushes. Big sagebrush, along with scattered Utah juniper and singleleaf pinyon, is associated with Thurber needlegrass, desert needlegrass, Sandberg bluegrass, and squirreltail on the higher elevation piedmont slopes and mountains.

### Ecological site concept

The Cobbly Claypan 8-10 P.Z. site occurs on hills, fan remnants, and mountain slopes on all aspects. Slope gradients of 2 to 50 percent are typical. Elevations are 5500 to about 7500 feet. The soils are very shallow to shallow. The site has a high amount of cobbles, stones, or boulders with a total surface cover of rock fragments over 60 percent.

### Associated sites

R027XY037NV	<b>LOAMY SLOPE 5-8 P.Z.</b> Found associated with more loamy soils.
-------------	--

### Similar sites

R027XY087NV	<b>CLAYPAN 14+ P.Z.</b> More productive site; surface rock fragments typically <45%; gentler slopes
R027XY083NV	<b>MOUNTAIN RIDGE</b> Less productive site

Table 1. Dominant plant species

Tree	Not specified
Shrub	(1) <i>Artemisia arbuscula</i>
Herbaceous	(1) <i>Achnatherum thurberianum</i>

### Physiographic features

The Cobbly Claypan 8-10 P.Z. site occurs on hills, fan remnants, and mountain slopes on all aspects. Slope gradients of 2 to 50 percent are typical. Elevations are 5500 to about 7500 feet.

Table 2. Representative physiographic features

Landforms	(1) Mountain slope (2) Hill (3) Fan remnant
Runoff class	Medium to very high
Elevation	5,500–7,500 ft
Slope	2–50%
Water table depth	72 in

Aspect	Aspect is not a significant factor
--------	------------------------------------

## Climatic features

The climate associated with this site is arid, characterized by cool, moist winters and hot, dry summers. Average annual precipitation is 8 to 10 inches. Mean annual air temperature is 49 to 54 degrees F. The average growing season is about 90 to 120 days. There is no climate station available for this site.

**Table 3. Representative climatic features**

Frost-free period (average)	120 days
Freeze-free period (average)	
Precipitation total (average)	10 in

## Influencing water features

There is no influencing water features associated with this site.

## Soil features

The soils associated with this site are very shallow to shallow and have formed in alluvium from mixed parent materials or residuum from volcanic rocks. These soils are well drained with very high runoff. Available water capacity is very low. The soil surface has a high amount of cobbles, stones, or boulders with a total surface cover of rock fragments over 60 percent. These rock fragments help reduce erosion and retain soil moisture. The soil series associated with this site include: Antholop, Mickey, Ravenell, Rowel, and Zyzzi.

**Table 4. Representative soil features**

Parent material	(1) Alluvium (2) Residuum (3) Residuum–igneous rock (4) Residuum–volcanic rock
Surface texture	(1) Very stony sandy loam (2) Very cobbly sandy loam (3) Very gravelly sandy loam
Family particle size	(1) Loamy
Drainage class	Well drained
Permeability class	Very slow to moderately slow
Soil depth	4–20 in
Surface fragment cover <=3"	18–71%
Surface fragment cover >3"	2–27%
Available water capacity (0-40in)	0.4–2.4 in
Calcium carbonate equivalent (0-40in)	0–5%
Electrical conductivity (0-40in)	0–4 mmhos/cm
Sodium adsorption ratio (0-40in)	0–2
Soil reaction (1:1 water) (0-40in)	6.6–7.8

Subsurface fragment volume <=3" (Depth not specified)	10–60%
Subsurface fragment volume >3" (Depth not specified)	2–46%

## Ecological dynamics

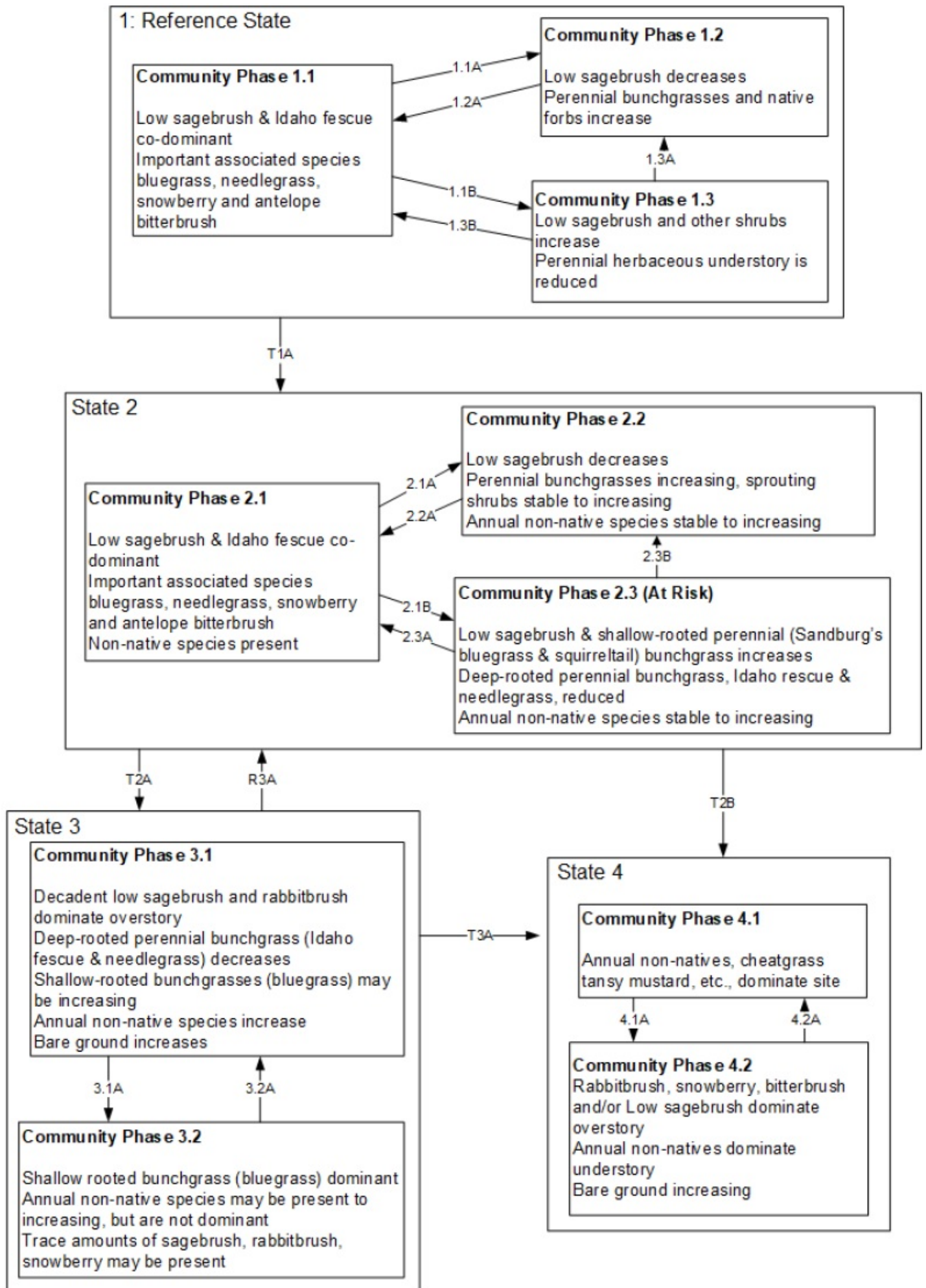
As ecological condition deteriorates, low sagebrush, Douglas' rabbitbrush, and Sandberg's bluegrass increase while Thurber's needlegrass decreases. When this site is in low ecological condition, galleta may become dominant following wildfire. Species likely to invade this site are annuals such as cheatgrass.

### Fire Ecology:

Prior to 1897 mean fire return intervals have been estimated to be from 12 to 15 years with intervals ranging from 3 to 28 years. Fire most often occurs during wet years with high forage production. Low sagebrush is very susceptible to fire damage. Low sagebrush is usually killed by fire and does not re-sprout. The recovery in burned areas is usually via small, light, wind-dispersed seed for all low sagebrush subspecies. Partially injured low sagebrush may re-grow from living branches, but sprouting does not occur.

Thurber needlegrass is classified a "moderately" resistant, but depending on season of burn, phenology, and fire severity, this perennial bunchgrass is moderately to severely damaged by fire. Aboveground vegetation of needlegrass is often consumed by fire. Thurber needlegrass is the least fire-resistant needlegrass, due to its densely tufted stems. Burning has been found to decrease the vegetation and reproductive vigor. Early season burning is more damaging to this needlegrass than late season burning.

## State and transition model



Reference State 1.0: This state is a representative of the natural range of variability under pristine conditions. State dynamics



are maintained by interactions between climatic patterns and disturbance regimes, including fires set by Native peoples. Negative feedbacks enhance ecosystem resilience and contribute to the stability of the state. These include the presence of all structural and functional groups, low fine fuel loads, and retention of organic matter and nutrients. Plant community phase changes are primarily driven by fire, periodic drought and/or insect or disease attack.

#### Community Phase 1.1:

Low sagebrush and Idaho fescue co-dominate. Bluegrass and needlegrass species are common. Associated shrubs include snowberry and antelope bitterbrush.

Community Phase Pathway 1.1a: Fire would decrease or eliminate the overstory of sagebrush and allows perennial bunchgrasses to dominate the site. Fires would typically be small and patchy due to low fuel loads. A fire following an unusually wet spring may be more severe and reduce sagebrush cover to trace amounts.

Community Phase Pathway 1.1b: Time and lack of disturbance such as fire allows for sagebrush to increase and become decadent. Long-term drought, herbivory, or combinations of these would cause a decline in perennial bunchgrasses and fine fuels and lead to a reduced fire frequency allowing big sagebrush to dominate the site.

Community Phase 1.2: This community phase is characteristic of a post-disturbance, early seral community phase. Idaho fescue, Cusick's bluegrass, muttongrass and needlegrass dominate. Depending on severity/type of disturbance patches of intact sagebrush may remain.

Community Phase Pathway 1.2a: Absence of disturbance over time coupled with natural regeneration allows sagebrush to increase. Patches of mature sagebrush required for a seed source are important for recovery to community phase 1.1.

#### Community Phase 1.3:

Sagebrush cover increases in the absence of disturbance. Decadent sagebrush dominates the overstory and the deep-rooted perennial bunchgrasses in the understory are reduced either from competition with shrubs and/or from herbivory.

Community Phase 1.3a: Fire would decrease or eliminate the overstory of sagebrush and allows perennial bunchgrasses to recover. Under natural conditions fires are typically low severity resulting in a mosaic pattern due to low fine fuel loads. A fire following an unusually wet spring favoring an increase in fine fuels, may be more severe and reduce sagebrush cover to trace amounts. A severe infestation of Aroga moth could also cause a large decrease in sagebrush within the community, giving a competitive advantage to the perennial grasses and forbs.

Community Phase Pathway 1.3b: A low severity patchy fire creates a sagebrush/grass mosaic with sagebrush and perennial bunchgrasses co-dominant.

#### T1A: Transition from Reference State 1.0 to Current Potential State 2.0

Trigger: This transition is caused by the introduction of non-native annual species such as cheatgrass, mustards, etc.

Slow variables: Over time the annual non-native plants will increase within the community.

Threshold: Any amount of introduced non-native species causes an immediate decrease in the resilience of the site. Annual non-native species cannot be easily removed from the system and have the potential to significantly alter disturbance regimes from their historic range of variation.

#### Current Potential State 2.0:

This state is similar to the Reference State 1.0. Ecological function has not changed, however the resiliency of the state has been reduced by the presence of non-natives. Non-natives may increase in abundance but will not become dominant within this State. These non-natives can be highly flammable and can promote fire where historically fire had been infrequent. Negative feedbacks enhance ecosystem resilience and contribute to the stability of the state. These feedbacks include the presence of all structural and functional groups, low fine fuel loads and retention of organic matter and nutrients. Positive feedbacks decrease ecosystem resilience and stability of the state. These include the non-natives' high seed output, persistent seed bank, rapid growth rate, ability to cross pollinate and adaptations for seed dispersal.

Community Phase 2.1: Low sagebrush and Idaho fescue dominate the site. Bluegrass and needlegrass species are common. Associated shrubs include snowberry and antelope bitterbrush. Non-native annual species are present.

Community Phase Pathway 2.1a: Fire reduces shrub overstory and allows for perennial bunchgrasses to dominate the site. Fires are typically low severity resulting in a mosaic pattern due to low fuel loads. A fire following an unusually wet spring or a change in management favoring an increase in fine fuels, may be more severe and reduce sagebrush cover to trace amounts. Annual non-native species are likely to increase after fire.

Community Phase Pathway 2.1b: Natural regeneration over time and lack of disturbance such as fire allows for sagebrush to increase and become decadent. Chronic drought reduces fine fuels and leads to a reduced fire frequency allowing sagebrush to dominate the site. Inappropriate growing season grazing reduces the deep-rooted perennial bunchgrass understory; conversely Sandberg bluegrass may increase in the understory depending on grazing management. Excessive sheep grazing favors Sandberg bluegrass; however, where cattle and/or horses are the dominant grazers, cheatgrass often increases.

Community Phase 2.2: This community phase is characteristic of a post-disturbance, early seral community phase. Idaho fescue and other perennial grasses dominate. Sagebrush may or may not be present in trace amounts. Rabbitbrush and snowberry may be sprouting. Forbs may increase post-fire but will likely return to pre-burn levels within a few years. Annual non-native species are stable or increasing within the community.

Community Phase Pathway 2.2a: Natural regeneration over time and lack of disturbance and/or grazing management that favors the establishment and growth of sagebrush allows the shrub component to recover. The establishment of sagebrush can take many years and is dependent on multiple years of favorable weather conditions.

Community Phase 2.3 (at risk): This community is at risk of crossing a threshold to another state. Sagebrush dominates the



Community Phase 2.0 (at risk). This community is at risk of crossing a threshold to another state. Sagebrush dominates the overstory and deep-rooted perennial bunchgrasses in the understory are reduced, either from competition with shrubs or from inappropriate grazing management, or from both. Rabbitbrush may be a significant component. Sandberg bluegrass may increase and become co-dominant with deep rooted bunchgrasses. Annual non-native species may be stable or increasing due to lack of competition with perennial bunchgrasses. This site is susceptible to further degradation from excessive grazing, prolonged drought, and/or fire.

Community Phase Pathway 2.3a: A change in grazing management that decreases shrubs would allow perennial bunchgrasses in the understory to increase. Heavy late-fall/winter grazing may cause mechanical damage and subsequent death to sagebrush, facilitating an increase in the herbaceous understory. An infestation of Aroga moth or a low severity fire would reduce some sagebrush overstory and allow perennial grasses to increase in the community. Brush management with minimal soil disturbance would also decrease sagebrush and release the herbaceous perennial understory. Annual non-native species are present and may increase in the community.

Community Phase Pathway 2.3b: Fire would decrease or eliminate the overstory of sagebrush and allow perennial bunchgrasses to dominate the site. Fires would typically be small and patchy due to low fuel loads. A fire following an unusually wet spring or a change in management may be more severe and reduce sagebrush cover to trace amounts.

T2A: Transition from Current Potential State 2.0 to Shrub State 3.0

Trigger: Inappropriate, long-term grazing of perennial bunchgrasses during the growing season favors an increase in sagebrush.

Slow variables: Long term decrease in deep-rooted perennial grass density.

Threshold: Loss of deep-rooted perennial bunchgrasses changes spatial and temporal nutrient cycling and nutrient redistribution, and reduces soil organic matter.

T2B: Transition from Current Potential State 2.0 to Annual State 4.0

Trigger: To Community Phase 4.1: Severe fire and/or soil disturbing treatments that cause Lahontan sagebrush mortality. To Community Phase 4.2: Inappropriate grazing management that favors shrubs in the presence of non-native species.

Slow variables: Increased production and cover of non-native annual species.

Threshold: Loss of deep-rooted perennial bunchgrasses and shrubs truncates, spatially and temporally, nutrient capture and cycling within the community. Increased, continuous fine fuels from annual non-native plants modify the fire regime by changing intensity, size and spatial variability of fires.

Shrub State 3.0:

This state is a product of many years of heavy grazing during time periods harmful to perennial bunchgrasses. Sandberg bluegrass may increase with a reduction in deep rooted perennial bunchgrass competition and may become the dominant grass or the herbaceous understory may be completely eliminated. Sagebrush dominates the overstory and rabbitbrush, snowberry and/or bitterbrush may be a significant component. Sagebrush cover exceeds site concept and may be decadent, reflecting stand maturity and lack of seedling establishment due to competition with mature plants. The shrub overstory dominates site resources such that soil water, nutrient capture, nutrient cycling and soil organic matter are temporally and spatially redistributed. Bare ground may be significant with soil redistribution occurring between interspace and canopy locations.

Community Phase 3.1:

Sagebrush dominates overstory and rabbitbrush, snowberry and/or bitterbrush may be a significant component. Deep-rooted perennial bunchgrasses may be present in trace amounts or absent from the community. Sandberg bluegrass may dominate the understory. Annual non-native species are present and may be co-dominant. Bare ground is significant.

Community Phase Pathway 3.1a: Fire, heavy fall grazing causing mechanical damage to shrubs, and/or brush treatments with minimal soil disturbance, will greatly reduce the overstory shrubs to trace amounts and allow Sandberg bluegrass to dominate the site.

Community Phase 3.2:

Bluegrass dominates the site; annual non-native species may be present but are not dominant.

Trace amounts of sagebrush may be present. Sprouting shrubs such as rabbitbrush, snowberry and/or bitterbrush may be increasing.

Community Phase Pathway 3.2a: Time and lack of disturbance and/or grazing management that favors the establishment and growth of sagebrush allows the shrub component to recover. The re-establishment of sagebrush can take many years.

T3A: Transition from Shrub State 3.0 to Annual State 4.0

Trigger: Severe/repeated fire and/or soil disturbing treatments. Possible soil disturbing treatments include attempted restoration with drought tolerant perennials, such as crested wheatgrass. Restoration attempts causing soil disturbance will likely initiate a transition to an annual state. Probability of success very low. Inappropriate grazing management in the presence of annual non-native species.

Slow variables: Increased production and cover of non-native annual species.

Threshold: Increased, continuous fine fuels modify the fire regime by changing intensity, size and spatial variability of fires. Changes in plant community composition and spatial variability of vegetation due to the loss of perennial bunchgrasses and sagebrush truncate energy capture spatially and temporally thus impacting nutrient cycling and distribution.

R3A: Restoration from Shrub State 3.0 to Current Potential State 2.0

Brush management with minimal soil disturbance, coupled with seeding of deep rooted perennial native bunchgrasses. Probability of success very low. Mechanical brush management, mowing, etc., should be considered carefully.

**Annual State 4.0:**

This community is characterized by the dominance of annual non-native species such as cheatgrass and tansy mustard in the understory. Sprouting shrubs such as rabbitbrush and snowberry may dominate the overstory.

**Community Phase 4.1**

Annual non-native plants such as cheatgrass or tansy mustard dominate the site. Rabbitbrush may or may not be present.

Community Phase Pathway 4.1a: Time and lack of fire allows for the sagebrush to establish. Probability of sagebrush establishment is extremely low.

Community Phase 4.2: Sprouting shrubs such as rabbitbrush, snowberry and/or bitterbrush dominate overstory. Low sagebrush may be a minor component. Annual non-native species dominate understory. Trace amounts of desirable bunchgrasses may be present. Bare ground is significant.

Community Phase Pathway 4.2a: Fire removes sagebrush and allows for annual non-native species to dominate the site.

**State 1**

**Reference Plant Community**

**Community 1.1**

**Reference Plant Community**

The reference plant community is dominated by low sagebrush and Thurber's needlegrass. Potential vegetative composition is about 45% grasses, 5% forbs and 50% shrubs. Approximate ground cover (basal and crown) is 15 to 25 percent.

Table 5. Annual production by plant type

Plant Type	Low (Lb/Acre)	Representative Value (Lb/Acre)	High (Lb/Acre)
Shrub/Vine	125	200	300
Grass/Grasslike	112	180	270
Forb	13	20	30
<b>Total</b>	<b>250</b>	<b>400</b>	<b>600</b>

**Additional community tables**

Table 6. Community 1.1 plant community composition



Group	Common Name	Symbol	Scientific Name	Annual Production (Lb/Acre)	Foliar Cover (%)
<b>Grass/Grasslike</b>					
1	<b>Primary Perennial Grasses</b>			96–192	
	Thurber's needlegrass	ACTH7	<i>Achnatherum thurberianum</i>	80–140	–
	Sandberg bluegrass	POSE	<i>Poa secunda</i>	8–32	–
	Indian ricegrass	ACHY	<i>Achnatherum hymenoides</i>	8–20	–
2	<b>Secondary Perennial Grasses</b>			8–32	
	desert needlegrass	ACSP12	<i>Achnatherum speciosum</i>	2–12	–
	squirreltail	ELEL5	<i>Elymus elymoides</i>	2–12	–
	James' galleta	PLJA	<i>Pleuraphis jamesii</i>	2–12	–
<b>Forb</b>					
3	<b>Perennial Forbs</b>			8–32	
	buckwheat	ERIOG	<i>Eriogonum</i>	2–12	–
	phlox	PHLOX	<i>Phlox</i>	2–12	–
	globemallow	SPHAE	<i>Sphaeralcea</i>	2–12	–
<b>Shrub/Vine</b>					
4	<b>Primary Shrubs</b>			136–180	
	little sagebrush	ARAR8	<i>Artemisia arbuscula</i>	120–140	–
	Nevada jointfir	EPNE	<i>Ephedra nevadensis</i>	8–20	–
	spiny hopsage	GRSP	<i>Grayia spinosa</i>	8–20	–
5	<b>Secondary Shrubs</b>			20–40	
	yellow rabbitbrush	CHVI8	<i>Chrysothamnus viscidiflorus</i>	2–12	–
	winterfat	KRLA2	<i>Krascheninnikovia lanata</i>	2–12	–

## Animal community

### Livestock Interpretations:

This site is suited for livestock grazing. Grazing management should be keyed to Thurber needlegrass. Thurber needlegrass is valuable forage for livestock and wildlife. Thurber needlegrass produces a fairly large amount of leafage that is usually of "good," although not choice, palatability for all classes of livestock. It is most palatable in the spring and early summer while the plants are young and succulent. Domestic sheep and to a much lesser degree cattle consume low sagebrush, particularly during the spring, fall and winter.

Stocking rates vary over time depending upon season of use, climate variations, site, and previous and current management goals. A safe starting stocking rate is an estimated stocking rate that is fine tuned by the client by adaptive management through the year and from year to year.

### Wildlife Interpretations:

Low sagebrush is considered a valuable browse plant during the spring, fall and winter months. In some areas it is of little value in winter due to heavy snow. Low sagebrush is an important food source for sage grouse throughout the year, especially between October and April. Mule deer utilize and sometimes prefer low sagebrush, particularly in winter and early spring.

## Hydrological functions

Runoff is very high. Permeability is very slow to moderately slow.

## Other information

Low sagebrush can be successfully transplanted or seeded in restoration.

## Inventory data references

NASIS soil component data.

## Type locality

Location 1: Lyon County, NV	
Township/Range/Section	T16N R25E S26
General legal description	At higher elevations in Cleaver Peak area, Desert Mountains, Lyon County NV. This site also occurs in Churchill and Mineral Counties, Nevada.

## Other references

Fire Effects Information System (Online; <http://www.fs.fed.us/database/feis/plants/>).

USDA-NRCS Plants Database (Online; <http://www.plants.usda.gov>).

## Contributors

GKB

## Approval

Kendra Moseley, 6/03/2024

## Rangeland health reference sheet

Interpreting Indicators of Rangeland Health is a qualitative assessment protocol used to determine ecosystem condition based on benchmark characteristics described in the Reference Sheet. A suite of 17 (or more) indicators are typically considered in an assessment. The ecological site(s) representative of an assessment location must be known prior to applying the protocol and must be verified based on soils and climate. Current plant community cannot be used to identify the ecological site.

Author(s)/participant(s)	
Contact for lead author	
Date	06/30/2024
Approved by	Kendra Moseley
Approval date	
Composition (Indicators 10 and 12) based on	Annual Production

## Indicators

1. **Number and extent of rills:**

---

2. **Presence of water flow patterns:**

---

3. **Number and height of erosional pedestals or terracettes:**

---

4. **Bare ground from Ecological Site Description or other studies (rock, litter, lichen, moss, plant canopy are not bare ground):**
- 
5. **Number of gullies and erosion associated with gullies:**
- 
6. **Extent of wind scoured, blowouts and/or depositional areas:**
- 
7. **Amount of litter movement (describe size and distance expected to travel):**
- 
8. **Soil surface (top few mm) resistance to erosion (stability values are averages - most sites will show a range of values):**
- 
9. **Soil surface structure and SOM content (include type of structure and A-horizon color and thickness):**
- 
10. **Effect of community phase composition (relative proportion of different functional groups) and spatial distribution on infiltration and runoff:**
- 
11. **Presence and thickness of compaction layer (usually none; describe soil profile features which may be mistaken for compaction on this site):**
- 
12. **Functional/Structural Groups (list in order of descending dominance by above-ground annual-production or live foliar cover using symbols: >>, >, = to indicate much greater than, greater than, and equal to):**
- Dominant:
- Sub-dominant:
- Other:
- Additional:
- 
13. **Amount of plant mortality and decadence (include which functional groups are expected to show mortality or decadence):**
- 
14. **Average percent litter cover (%) and depth ( in):**
- 
15. **Expected annual annual-production (this is TOTAL above-ground annual-production, not just forage annual-production):**



---

16. **Potential invasive (including noxious) species (native and non-native). List species which BOTH characterize degraded states and have the potential to become a dominant or co-dominant species on the ecological site if their future establishment and growth is not actively controlled by management interventions. Species that become dominant for only one to several years (e.g., short-term response to drought or wildfire) are not invasive plants. Note that unlike other indicators, we are describing what is NOT expected in the reference state for the ecological site:**

---

17. **Perennial plant reproductive capability:**

---