

Ecological site R036XY347CO

Foothill Valley

Accessed: 05/03/2024

General information

Provisional. A provisional ecological site description has undergone quality control and quality assurance review. It contains a working state and transition model and enough information to identify the ecological site.

MLRA notes

Major Land Resource Area (MLRA): 036X–Southwestern Plateaus, Mesas, and Foothills

Foothill valley ecological site is found on valley floors and drainageways in MLRA 36 (Southwestern Plateaus Mesas and Foothills). The MLRA 36 is illustrated orange color on the map. The ecological site locations as assigned in soil survey map units are shown in pink color.

The site concept was established within the MLRA 36 Foothill/Upland regions. This zone is 12 to 16 inches of precipitation and has a mesic temperature regime. This site has bimodal precipitation that is dominated by grasses with Basin big sagebrush.

Classification relationships

NRCS & BLM: Major Land Resource Area 36, Southwestern Plateaus Mesas and Foothills (United States Department of Agriculture, Natural Resources Conservation Service, 2006).

USFS:

313Aa - San Juan Basin-Mesa Verde, and 313Ac - Monument Upwarp Subsections <313A Grand Canyon Section < 313 Colorado Plateau Semi-desert (Cleland, et al., 2007).

313Be San Juan Basin North Subsection <313B Navaho Canyonlands Section < 313 Colorado Plateau Semi-desert (Cleland, et al., 2007).

EPA:

20a Monticello-Cortez Uplands and 20c Semiarid Benchlands and Canyonlands, < 20 Colorado Plateau < 10.I Cold Deserts < 10 North American Deserts (Griffith, 2006).

USGS: Colorado Plateau Province (Canyonlands and Navajo Section)

Ecological site concept

The 36X Foothill Valley was drafted from the existing Foothill Valley Range Site MLRA 39, 48A, (SCS, April, 1986). This site was written prior to MLRA 36 being mapped in Colorado and this area was in MLRA 39 when it was written. This site occurs on valley bottoms, toe slopes and alluvial fans. The soils are deep with loamy textures (sandy loam to clay loam). Soils are derived from alluvium. It is a western wheatgrass-Indian ricegrass community with Basin big sagebrush. It has an aridic ustic moisture regime and mesic temperature regime. The effective precipitation ranges from 12 to 16 inches.

Associated sites

R036XY038CO	Wet Meadow This site has season-long ground water within 3.5 feet of the surface and is occasionally flooded. This site is poorly drained.
R036XY346CO	Cobbly Foothills This site is gravelly or cobbly loamy soils that are deep and can include moderately deep inclusions. The vegetation is big sagebrush with pinyon and Utah juniper.

Similar sites

R036XY310CO	Sandy Foothills Site occurs on rolling uplands on mesas. Soils are deep sandy loams to loamy sands. Dominant plants are needle-and-thread, western wheatgrass, Wyoming big sagebrush, and balsamroot.
R036XY287CO	Stony Foothills Stony Foothill is a gentle sloped (<25% slope) site with moderately deep to deep that are loamy-skeletal in texture. This site is dominated by Pinyon, Utah Juniper. This site may have oakbrush in the understory. This site is in the 12 to 16 inch precipitation zone of foothills/upland.
R036XY289CO	Clayey Foothills Site occurs on benches, foot-slopes, fans, and valley. Soils are moderately deep to deep and have marine shale as parent materials. The soil textures are clay loam to clay. Dominant plants are Wyoming Big Sagebrush and western wheatgrass. This site has a high potential for shrink swell.
R036XY284CO	Loamy Foothills Loamy Foothills are loamy texture soils found on mesas and benches. The dominant plants are Wyoming Big Sagebrush muttongrass, and western wheatgrass. This site has similar soils and plant community composition to Loamy Foothills, but the dominant shrub is basin big sagebrush instead of Wyoming big sagebrush.

Table 1. Dominant plant species

Tree	Not specified
Shrub	(1) <i>Artemisia tridentata</i> subsp. <i>tridentata</i>
Herbaceous	(1) <i>Pascopyrum smithii</i> (2) <i>Achnatherum hymenoides</i>

Physiographic features

The topography of this site is generally concave upland valley bottoms, toe slopes, and alluvial fans. It is dissected in many places by gullies and draws running down the valleys. Slopes range between 0 and 15 percent. Commonly, the site is on slopes of 1 to 6 percent. Slopes do not have a significant influence on the plant growth, however, aspect may play an important role in plant diversity. Elevation ranges from 5,800 to 7,200 feet.

Table 2. Representative physiographic features

Landforms	(1) Alluvial fan (2) Stream terrace (3) Valley floor
Flooding frequency	None
Ponding frequency	None
Elevation	1,768–2,195 m
Slope	0–15%
Aspect	Aspect is not a significant factor

Climatic features

Average annual precipitation is about 12 to 16 inches. Of this, 40-50% falls as snow, and 40-45% falls between May 1 and September 30. Summer moisture is mostly from thundershowers in late July, August, and September. The

driest period is usually from April to early June; and June is normally the driest month. There is fall growth from late summer rains on this site during August and September, usually from the warm season plants. The average annual total snowfall is 38.3 inches. The highest winter snowfall record in this area is 117.5 inches which occurred in 1978-1979. The lowest snowfall record is 3.0 inches during the 1937-1938 winter. This area is located where there is winter precipitation and summer monsoonal rains. Moisture that comes during summer will favor the warm season plants. Mean daily annual air temperature is about 48°F to 52°F, averaging about 31°F for the winter and 60°F through the growing season, March through October. Summer temperatures of 100°F or more are not unusual. The frost-free period typically ranges from 110 to 130 days. The last spring frost is the end of April to the end of May and the first fall frost is the first week of October to the end of October. Mean annual temperature ranges from 64 to 37°F. The coldest winter temperature recorded was -23°F on February 8, 1933 and the coldest summer temperature recorded was 28°F on June 3, 1908. The hottest day on record is 110 °F on June 22, 1905. Wide yearly and seasonal fluctuations are common for this climatic zone. Data taken from Western Regional Climate Center (2015) for Blanding, Utah, Colorado Climate Station. Blanding is on the Western edge of the MLRA. Most Climate station in this LRU (Land Resource Unit) are either on the low end of the range (~12") or the high end (15 to 16") of the precipitation range. Blanding and Uravan are the only ones in the middle and Blanding has the longest record.

Table 3. Representative climatic features

Frost-free period (average)	122 days
Freeze-free period (average)	147 days
Precipitation total (average)	356 mm

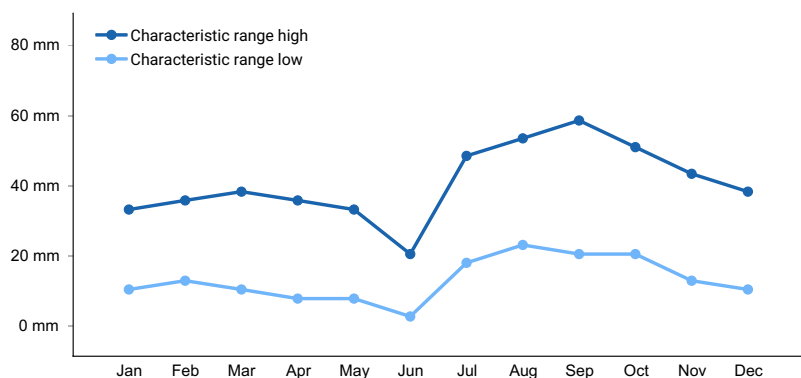


Figure 1. Monthly precipitation range

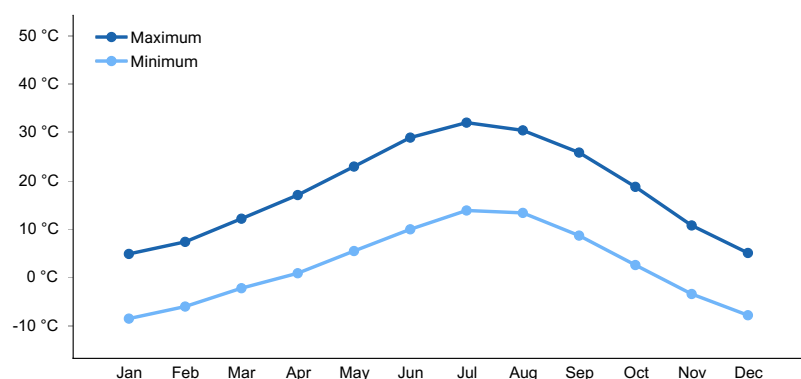


Figure 2. Monthly average minimum and maximum temperature

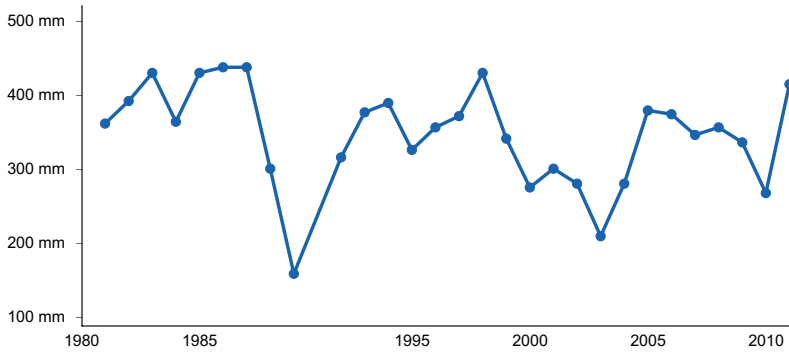


Figure 3. Annual precipitation pattern

Climate stations used

- (1) YELLOW JACKET 2 W [USC00059275], Yellow Jacket, CO
- (2) URAVAN [USC00058560], Naturita, CO
- (3) LA SAL 1SW [USC00424947], Monticello, UT
- (4) CORTEZ [USC00051886], Cortez, CO
- (5) NORTHDALE [USC00055970], Dove Creek, CO
- (6) BLANDING [USC00420738], Blanding, UT

Influencing water features

No water features on this site.

Soil features

The soils that make up this range site are deep (60"+) and well drained, but there may be inclusions of moderately deep soils. The surface texture ranges from a sandy loam to a loam with clay percent ranging from 12 to 22%. The surface layer is 4 to 10 inches thick. The subsoil is clay loam, sandy clay loam, or loam with clay percentages ranging from 12 to 30% in the subsoil at 20" of depth. Depth of subsoil is 30 to 60 inches or more.

Major Fine-loamy soils associated with this site are: Buckle and Yenlo.

Major coarse-loamy soils associated with this site are: Payter and Florita.

Table 4. Representative soil features

Parent material	(1) Alluvium–sandstone and shale
Surface texture	(1) Loam (2) Sandy loam
Family particle size	(1) Loamy
Drainage class	Well drained
Permeability class	Moderately slow to moderately rapid
Soil depth	152 cm
Surface fragment cover <=3"	0–5%
Surface fragment cover >3"	0–2%
Available water capacity (0-101.6cm)	10.16–17.78 cm
Calcium carbonate equivalent (0-101.6cm)	0–10%
Electrical conductivity (0-101.6cm)	0–2 mmhos/cm

Sodium adsorption ratio (0-101.6cm)	0-5
Soil reaction (1:1 water) (0-101.6cm)	7-8.4
Subsurface fragment volume <=3" (Depth not specified)	0-5%
Subsurface fragment volume >3" (Depth not specified)	0-2%

Ecological dynamics

MLRA 36 occurs on the higher elevation portion of the Colorado Plateau. The Colorado Plateau is a physiographic province which exists throughout eastern Utah, western Colorado, western New Mexico and northern Arizona. It is characterized by uplifted plateaus, canyons and eroded features. The Colorado Plateau lies south of the Uintah Mountains, north of the Mogollon transition area, west of the Rocky Mountains, and east of the central Utah highlands. The higher elevation portion of the Colorado Plateau which is represented by MLRA 36 is characterized by broken topography, and lack of perennial water sources. This area has a long history of past prehistoric human use for thousands of years. MLRA 36 shows archaeological evidence indicating that pinyon-juniper woodlands were modified by prehistoric humans and not pristine and thus were altered at the time of European settlement (Cartledge & Propper, 1993). This area also included natural influences of herbivory, fire, and climate. This area rarely served as habitat for large herds of native herbivores or large frequent historic fires due to the broken topography. This site is extremely variable and plant community composition will vary with the water fluctuations on this site.

There is a winter-summer bimodal precipitation pattern on this part of the Colorado Plateau. Meaning that this site developed under climatic conditions that include wet, cold winters, and hot, dry summers with summer rains. This area has climatic fluctuations and prolonged droughts are common occurrences. Between an above average year and a drought year, forbs are the most dynamic (Passey et.al. 1982) and can vary up to 4 fold. The precipitation and climate of MLRA 36 are conducive to producing Pinyon/juniper, and sagebrush complexes with high productive sites in the bottoms of the canyons. Predominant species on the Colorado Plateau are Wyoming big sagebrush (*Artemisia tridentata* var. *wyomingensis*), mountain big sagebrush (*A. tridentata* var. *vaseyana*), and black sagebrush (*A. nova*), Basin Big Sagebrush (*A. tridentata* var. *tridentata*), Utah Juniper (*Juniperus utahensis*) and Pinyon (*Pinus edulis*).

This site is characterized by big sagebrush. It is not a sagebrush steppe, but a sagebrush shrub-land where there is naturally less understory herbaceous production, more bare ground, and biological crusts are common (Boyle and Reeder, 2005). Recovery from fire, grazing, or other disturbances is usually slower and attempts at land restoration are less successful than in the sagebrush steppe (West 1983). The sites in this area are developed with the natural influences of grazing, fire, climatic variability (i.e. extended drought) and insect herbivory. This area has climatic fluctuations and prolonged droughts are common. Between an above average year and a drought year, forbs are the most dynamic (Passey et.al. 1982) and can vary up to 4 fold.

The ability for an ecological site to carry fire depends primarily on the present fuel load and plant moisture content—sites with small fuel loads will burn more slowly and less intensely than sites with large fuel loads. Fire is an important aspect of big sagebrush dominated ecological sites. Fire return intervals in basin big sagebrush are intermediate between mountain big sagebrush (5 to 15 years) and Wyoming big sagebrush (10 to 70 years) (Tirmenstein, 1999). Fires are typically patchy, forming mosaics. Shrub vegetation is able to reestablish from seed dispersal from the adjacent non burned sagebrush stands; however the process is relatively slow. Fire also decreases the extent of Utah juniper/pinyon pine invasions, which allows the historic plant community to maintain integrity. When the plant community is burned shrubs decrease, while perennial and annual grasses increase. The perennial shrubs associated with this site are able to recover at a faster rate than the invading trees. When the site is degraded by the presence of invasive annuals, the fire return interval is shortened due to increased fuels. The shortened fire return interval is often sufficient to suppress the native plant community.

Variability in climate, soils, aspect and complex biological processes will cause the plant communities to differ. These factors contributing to annual production variability include wildlife use, drought, and insects. Factors contributing to special variability include soil texture, depth, rock fragments, slope, aspect, and micro-topography.

The species lists are representative and not a complete list of all occurring or potentially occurring species on this site. The species lists are not intended to cover the full range of conditions, species and responses of the site. The State & Transition model depicted for this site is based on available research, field observations and interpretations by experts and could change as knowledge increases. As more data is collected, some of these plant communities may be revised or removed, and new ones may be added. The following diagram does not necessarily depict all the transitions and states that this site may exhibit, but it does show some of the most common plant communities.

The following is from 1986 range site:

The plant community is about 70 percent grasses, 5 percent forbs, and 25 percent shrubs, air-dry weight. The production is predominantly made up of grasses; however, the numerous forbs add a distinctive appearance to the landscape. The dominant grasses are western wheatgrass, Indian ricegrass, galleta, and blue grama. Less dominant grasses are needle-and-thread, and bottlebrush squirreltail. Forbs that make up the plant community are scarlet globemallow, longleaf phlox, and woolly indianwheat. Shrubs that are most noticeable on this site are basin big sagebrush and rubber rabbitbrush.

If ecological retrogression is cattle-induced, desirable grass will decrease. However, if retrogression is sheep-induced, desirable forbs and shrubs may be reduced. Deterioration of this site caused by the overgrazing of cattle will decrease the percentage of grasses such as western wheatgrass, galleta, and Indian ricegrass. With the decrease of the above mentioned plants, blue grama, sand dropseed, and Fendler threeawn will increase initially. Forbs will increase such as longleaf phlox and woolly indianwheat; and shrubs such as basin big sagebrush and rubber rabbitbrush will also increase. With continued ecological destruction, plants such as plains pricklypear, Fendler threeawn, and annuals will invade the site.

Vegetation density is approximately 10 to 15 percent. Vegetation density = basal area. This is the area of ground surface covered by the perennial stem or stems. Usually, this is measured one inch above the soil surface. This is in contrast to the full spread of the perennial foliage.

If sheep are the principal grazers of this site, then 20 to 30 percent of the annual production will be unpalatable or out of reach, while if cattle are the main users, 15 to 20 percent of the production will not be available for use.

State and transition model

R036XY347CO Foothill Valley

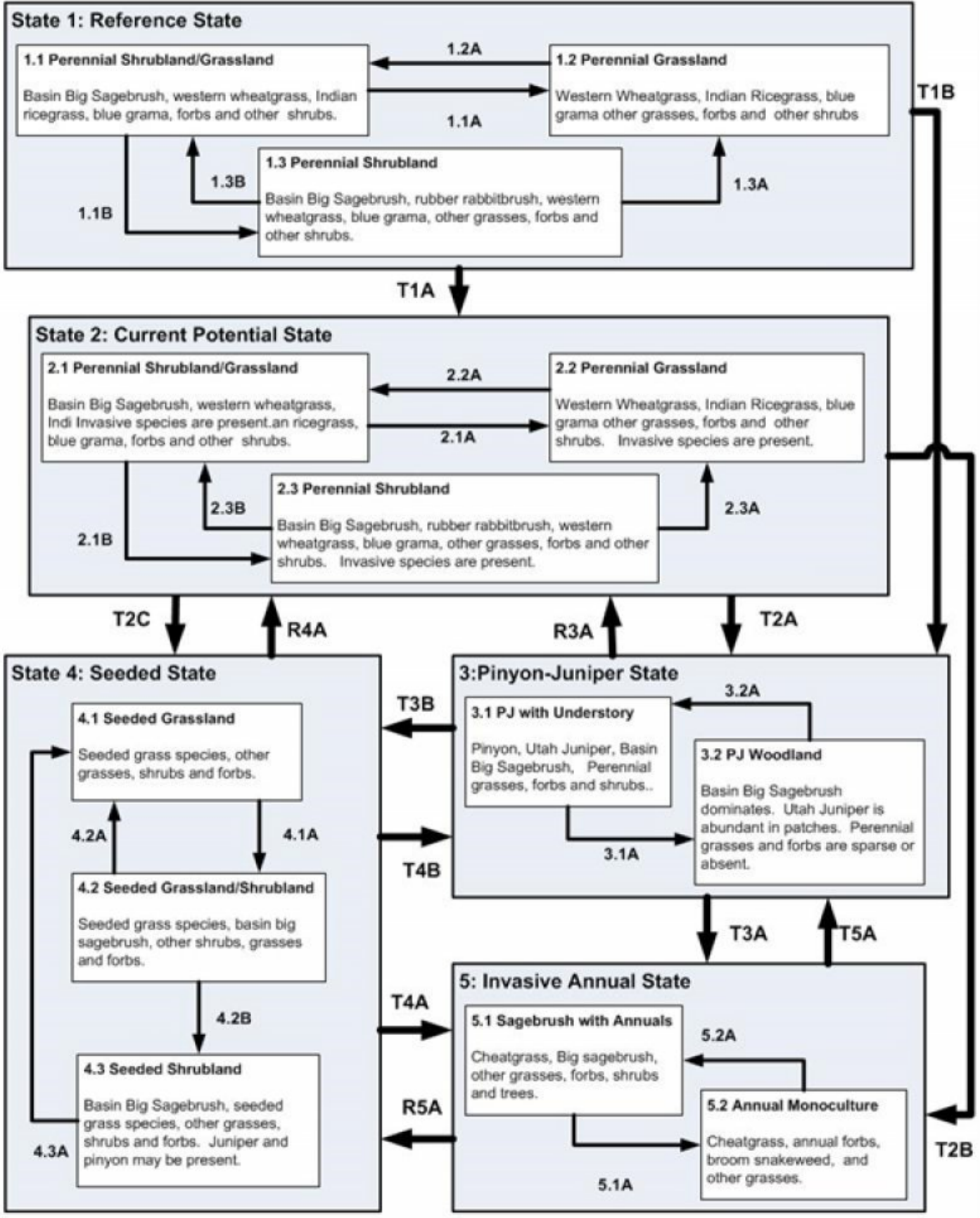


Figure 5. Foothill Valley STM

Legend

1.1A, 2.1A, 4.2A – fire, insect herbivory, and/or drought
 1.1B, 2.1B, 1.2A, 2.2A, 4.1A, 4.2B – lack of fire, time without disturbance and improper grazing
 1.3A, 2.3A, 1.3B, 2.3B, 3.2A, R3A, 4.3A – fire, vegetation treatments, insect herbivory, drought, and/or tree encroachment removal
 T1A – invasive species establishment, improper grazing, fire, surface disturbances, and/or extended droughts.
 T1B, T2A, 3.1A, T4B – fire suppression, time without disturbance, insect herbivory, and tree encroachment
 T2B, T3A, T4A – invasive species establishment, frequent fire and/or long term drought
 T2C, T3B – Seeding and removal of tree encroachment
 R4A – Lack of disturbance, and/or removal of encroached PJ
 5.1A – Frequent fire, and/or drought
 5.2A, T5B – fire suppression and/or seeding
 T5A – treat invasive species, and seeding

Figure 6. STM Legend

State 1 Reference State

This state includes the biotic communities that become established on the ecological site under the natural disturbance regime prior to pre-European settlement. The main pathways on this site are fire and drought. Drought is frequent on this site. Historically, fires were of mixed severity, and various sizes. The fire frequency was 10-70 years in Big Sagebrush communities that occur in the uplands. The reference state is generally dominated by big sagebrush, western wheatgrass, Indian ricegrass, blue grama, other native perennial grasses and native perennial and annual forbs which creates a diverse understory. Soil crusts are a very important part of this community. Crusts recycle nutrients, aid in moisture retention, fix nitrogen, fix carbon, and stabilize the soil reducing wind and water erosion (Belnap, 1994; Belnap and Gillette, 1998; Beymer and Klopatek 1991). The reference state is self-sustaining and resistant to change due to high resistance to natural disturbances and high resilience following natural disturbances.

Community 1.1 Perennial Shrubland/Grassland

This community phase is dominated by big sagebrush, western wheatgrass, Indian ricegrass, blue grama, and galleta. This phase has the most diverse understory of native perennial grasses and forbs. Abundance, and production of warm or cool season herbaceous plants and forb production are dependent on the timing of precipitation, and can vary widely between years. The sagebrush will be a mixed age stand. Biological crusts (lichen, moss, and cyanobacteria) should be present but are variable based on plant community and state. Small amounts of low woody and semi-woody plants such as, rubber rabbitbrush, and broom snakeweed are common.

Table 5. Annual production by plant type

Plant Type	Low (Kg/Hectare)	Representative Value (Kg/Hectare)	High (Kg/Hectare)
Grass/Grasslike	600	863	992
Shrub/Vine	241	277	336
Forb	56	93	129
Total	897	1233	1457

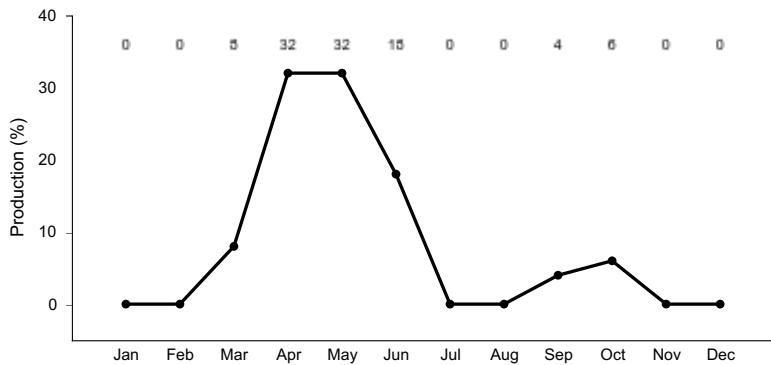


Figure 8. Plant community growth curve (percent production by month). CO0103, MLRA 36 - Foothills Mesic. MLRA 36.

Community 1.2 Perennial Grassland

This post-fire community would be dominantly characterized by perennial grasses and native forbs (annual and perennial). This community would exist for short time period until sagebrush began to become established and set seed. Scattered, sparse sagebrush may be present and will increase with time. This site would stay in grassland if fire returned to this site and did not allow big sagebrush time to re-seed and establish.

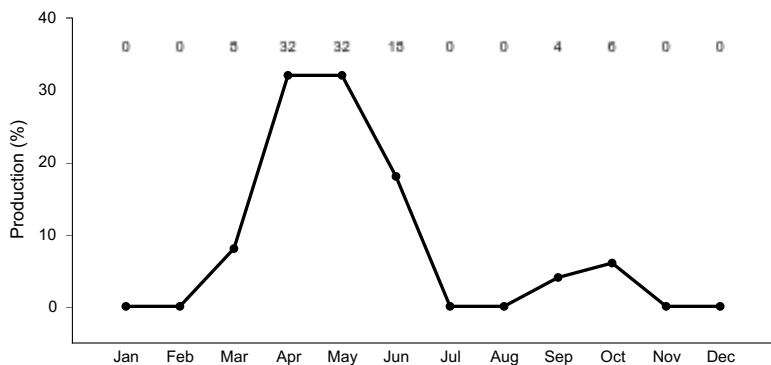
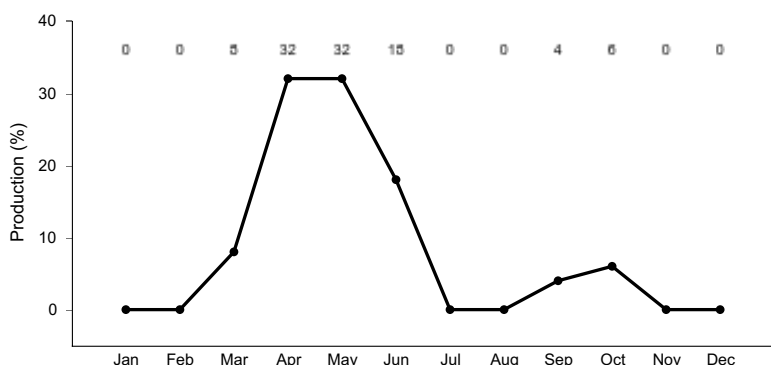


Figure 9. Plant community growth curve (percent production by month). CO0103, MLRA 36 - Foothills Mesic. MLRA 36.

Community 1.3 Perennial Shrubland

This community consists big sagebrush with sparse understory. Sagebrush canopy cover would typically be greater than 35%. Scattered Utah juniper and maybe two-needle pinyon might be present and tree canopy cover would be 0-10%. Biological crusts are typically well developed in the interspaces; however, bare ground is most common in this community phase. Improper grazing use can aid the establishment of pinyon and juniper seedlings through reduced competition, exposure of mineral soil, and reduction of fuel to carry fires. This combined with increasing control of fires has caused large portions of the site to be taken over by pinyon and juniper since the coming of livestock. Two-needle pinyon and Utah juniper are natural invaders if stands are found adjacent to this site. Trees left uncontrolled can form dense stands and eventually dominate the site.



Pathway 1.1A **Community 1.1 to 1.2**

This transition is caused by naturally occurring fires, herbivory of sagebrush, and/or drought that suppresses sagebrush establishment. These events tend to favor grass establishment. With a mature sagebrush community, this pathway can be caused by high intensity fire that burns hot enough to remove big sagebrush. Low-intensity fire after sagebrush has had a chance to set seed, improper grazing and or browsing by native ungulates, and possible stem-root pathogens will revert a young sagebrush community to a grassland with the potential to become a sagebrush-grass community once again (Winward, 2004).

Pathway 1.1B **Community 1.1 to 1.3**

This transition is from the native shrub and perennial warm and cool season grass state, to a state that is dominated by big sagebrush. This pathway happens when fire does not occur within the historical fire regime interval for the site. Improper continuous grazing of perennial grasses will speed up this pathway. This will lead to an old decadent stand of sagebrush with little to no understory. This allows the possibility of Utah juniper and/or two-needle pinyon to become established on the site.

Pathway 1.2A **Community 1.2 to 1.1**

This pathway favors shrub establishment. This pathway is caused by time without disturbance (i.e. fire) and favorable conditions for young sagebrush establishment.

Pathway 1.3B **Community 1.3 to 1.1**

Pathways can be one or more of the following: brush treatments, seeding, insect herbivory/pathogen, proper grazing, drought, and fire. Insect herbivory and/or root and stem pathogen die-off will thin the stands and allow perennial plants to establish if it is properly grazed.

Pathway 1.3A **Community 1.3 to 1.2**

This pathway is caused by naturally occurring fires and/or insect herbivory removes the shrubs and possible trees if they have encroached on this site. It reverts the system back to a grassland phase.

State 2 **Current Potential State**

The current potential state is similar in structure and function to the reference state, however invasive species are present in all community phases. The current potential state is generally dominated by big sagebrush and perennial grasses, but has an additional phase due to juniper encroachment as a result of fire suppression. The current potential state is less resilient than the reference state due to the presence of non-native/invasive species in the plant community.

Community 2.1 **Perennial Shrubland/Grassland**

This community phase is dominated by big sagebrush, western wheatgrass, Indian ricegrass, blue grama, and galleta. This phase has the most diverse understory of native perennial grasses and forbs. Abundance, and production of warm or cool season herbaceous plants and forb production are dependent on the timing of precipitation, and can vary widely between years. The sagebrush will be a mixed age stand. Biological crusts

(lichen, moss, and cyanobacteria) should be present but are variable based on plant community and state. Small amounts of low woody and semi-woody plants such as, rubber rabbitbrush, and broom snakeweed are common. Nonnative invasive species, such as cheatgrass are present but in insignificant amounts.

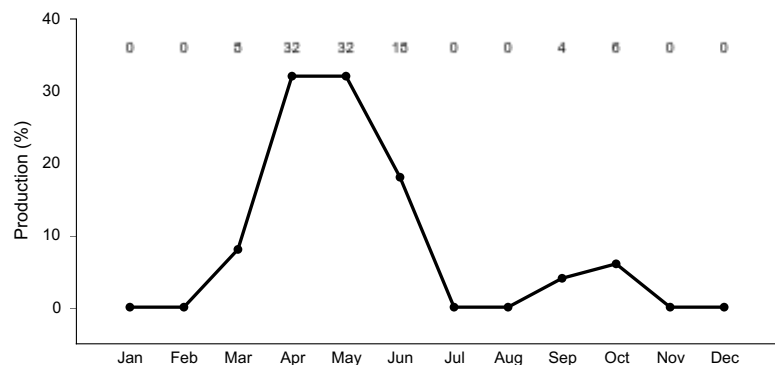


Figure 11. Plant community growth curve (percent production by month). CO0103, MLRA 36 - Foothills Mesic. MLRA 36.

Community 2.2 Perennial Grassland

This post-fire community would be dominantly characterized by perennial grasses and native forbs (annual and perennial). Annual plant production is high in this phase due to the grass production. This community would exist for short time period until sagebrush began to become established and set seed. Scattered, sparse sagebrush may be present and will increase with time. This site would stay in grassland if fire returned to this site and did not allow big sagebrush time to re-seed and establish. Nonnative invasive species, such as cheatgrass are present but in insignificant amounts.

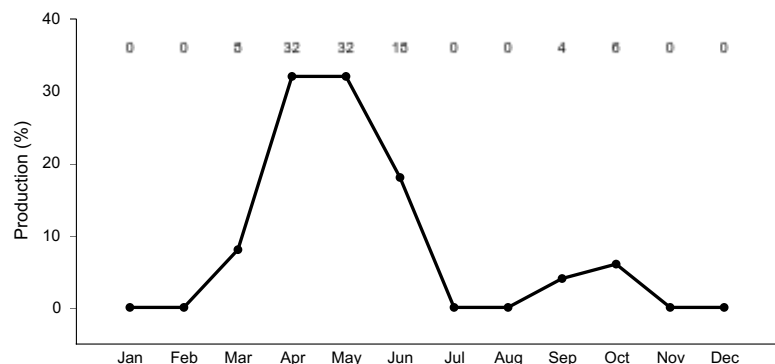


Figure 12. Plant community growth curve (percent production by month). CO0103, MLRA 36 - Foothills Mesic. MLRA 36.

Community 2.3 Perennial Shrubland

This community consists big sagebrush with sparse understory. Sagebrush canopy cover would typically be greater than 35%. Scattered Utah juniper and maybe two-needle pinyon might be present and tree canopy cover would be 0-10%. Biological crusts are typically well developed in the interspaces; however, bare ground is most common in this community phase. Improper grazing use can aid the establishment of pinyon and juniper seedlings through reduced competition, exposure of mineral soil, and reduction of fuel to carry fires. This combined with increasing control of fires has caused large portions of the site to be taken over by pinyon and juniper since the coming of livestock. Two-needle pinyon and Utah juniper are natural invaders if stands are found adjacent to this site. Trees left uncontrolled can form dense stands and eventually dominate the site. Nonnative invasive species, such as cheatgrass are present but in insignificant amounts.

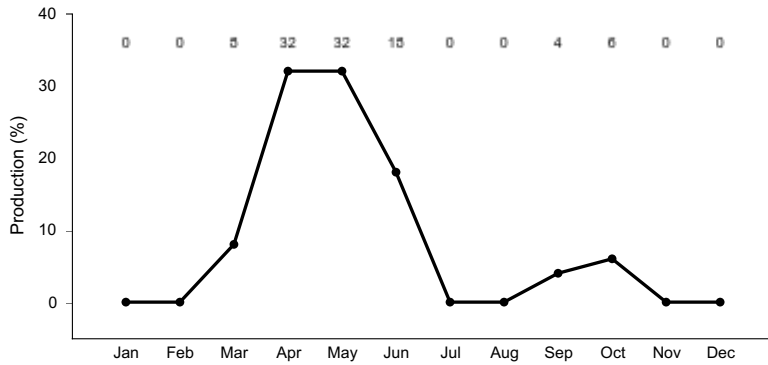


Figure 13. Plant community growth curve (percent production by month). CO0103, MLRA 36 - Foothills Mesic. MLRA 36.

**Pathway 2.1A
Community 2.1 to 2.2**

This transition is caused by naturally occurring fires, herbivory of sagebrush, and/or drought that suppresses sagebrush establishment. These events tend to favor grass establishment. With a mature sagebrush community, this pathway can be caused by high intensity fire that burns hot enough to remove big sagebrush and PJ, if it has started to encroach. Low-intensity fire after sagebrush has had a chance to set seed, improper grazing and or browsing by native ungulates, and possible stem-root pathogens will revert a young sagebrush community to a grassland with the potential to become a sagebrush-grass community once again (Winward, 2004). Vegetation treatments (mechanically, prescribed fire, chemically, etc.) can also be employed to imitate the natural disturbances regime.

**Pathway 2.1B
Community 2.1 to 2.3**

This transition is from the native shrub and perennial warm and cool season grass state, to a state that is dominated by big sagebrush. This pathway happens when fire does not occur within the historical fire regime interval for the site. Improper continuous grazing of perennial grasses will speed up this pathway. This will lead to an old decadent stand of sagebrush with little to no understory. This allows the possibility of Utah juniper and/or two-needle pinyon to become established on the site.

**Pathway 2.2A
Community 2.2 to 2.1**

This pathway favors shrub establishment. This pathway is cause by time without disturbance (i.e. fire) and favorable conditions for young sagebrush establishment.

**Pathway 2.3B
Community 2.3 to 2.1**

Pathways can be one or more of the following: brush treatments, seeding, insect herbivory/pathogen, proper grazing, drought, and fire. Insect herbivory and/or root and stem pathogen die-off will thin the stands and allow perennial plants to establish if it is properly grazed

**Pathway 2.3A
Community 2.3 to 2.2**

This pathway is caused by naturally occurring fires, vegetation treatments, and/or insect herbivory removes the shrubs and possible trees if they have encroached on this site. It reverts the system back to a grassland phase.

**State 3
Pinyon-Juniper State**

It is thought that pinyon and juniper, with an understory of mostly perennial grasses, may dominate the site in the longtime absence of fire, but lightning fires following warm dry early summer weather are a natural feature of the region. This could have maintained much of the site in a grassland cover, as reported by many early settlers except for occasional trees and isolated patches. Such vegetation is the basis for the potential described here. Without fire, simulated clearing methods may be necessary to maintain it (SCS, 1975, Miller and Tausch 2002). This state typically occurs when there is a long time span between fires. The transition to this state also has a reduction in fine fuels plays a part in increasing the fire return intervals once the site has transition to this pinyon-juniper state. Thus, state can persist for long time periods until the conditions needed for a fire occur or vegetation treatments are done to move the community to a different state.

Community 3.1 PJ with Understory

It is dominated by a dense closed canopy of Utah juniper and pinyon. They will be with a sparse understory of big sagebrush with little to no grass or forbs. Also, Invasive annuals grasses and forbs will be present in the understory.

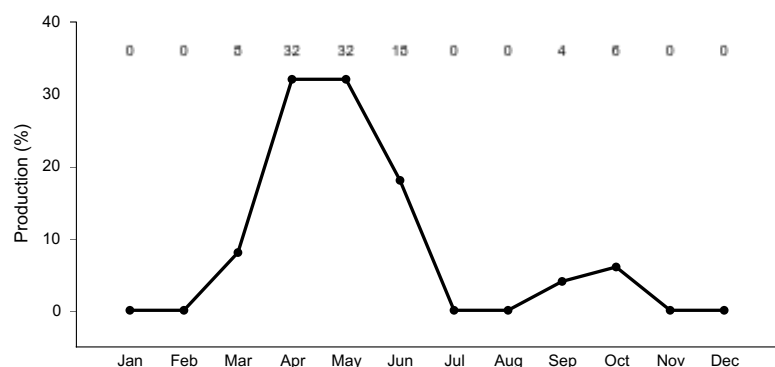


Figure 14. Plant community growth curve (percent production by month). CO0103, MLRA 36 - Foothills Mesic. MLRA 36.

Community 3.2 PJ Woodland

This state has an overstory of Utah juniper and/or two-needle pinyon with an understory of big sagebrush. There is very little herbaceous or other plant growth on this site. The production and infiltration is low. Erosion is high, and the associated watersheds will become less stable and have more runoff.

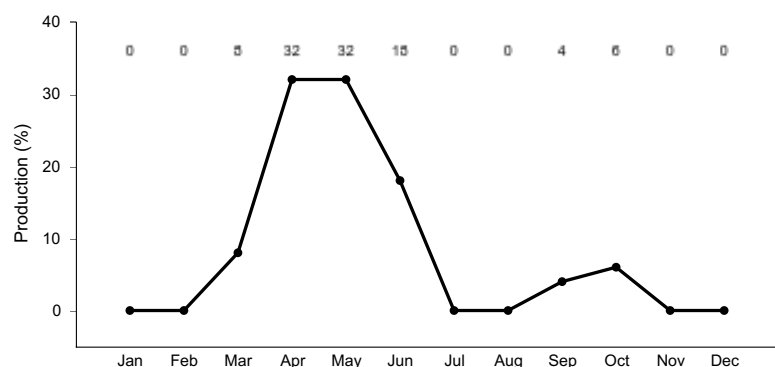


Figure 15. Plant community growth curve (percent production by month). CO0103, MLRA 36 - Foothills Mesic. MLRA 36.

Pathway 3.1A Community 3.1 to 3.2

Events include time without disturbance, insect herbivory, continuous season long grazing of perennial grasses, and continued tree invasion until they dominate the site.

Pathway 3.2A

Community 3.2 to 3.1

Occurs when trees are removed naturally (fire, drought, insects or other pathogens) and/or by vegetation treatments (i.e. mechanical, chemical).

State 4 Seeded State

This state results from seeding introduced perennial grasses (i.e. crested wheatgrass and Russian wildrye). Native perennial grasses, forbs and shrubs may be included in the seed mix. This state behave similar community dynamics to the current potential state community. Other vegetation treatments may be necessary to get to this state, they include chaining, mowing, disking, prescribed burning and other techniques which manipulate the plant community. Applying vegetation treatments to plant communities to either the invasive annuals or juniper encroachment states to create a seeded state is often the first step in assisted restoration to plant communities an intermediate step to get to the Current Potential State. The seeded state could persist for long periods of time with proper management. Native grasses and forbs may reestablish over time from nearby seed sources. Big sagebrush will typically reestablish in 30-40 years.

Community 4.1 Seeded Grassland

This community is dominated by seeded plants such as crested wheatgrass, Russian wildrye, smooth brome, and intermediate and pubescent wheatgrasses. Big sagebrush has little to no production in this phase. This site has high production due to the seed grass production. This production typically is higher than the current potential or reference state. This site usually has low species diversity.

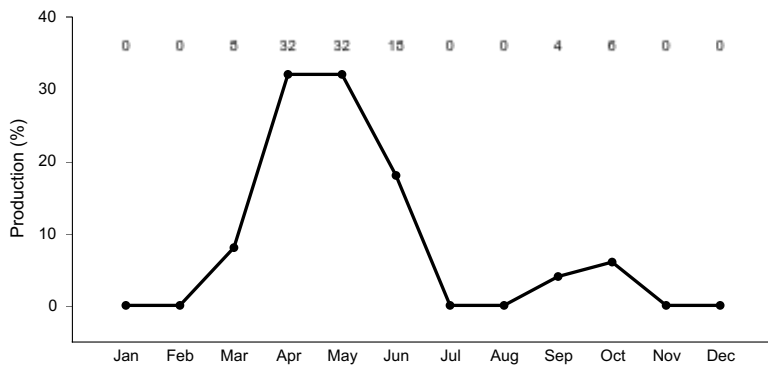


Figure 16. Plant community growth curve (percent production by month). CO0103, MLRA 36 - Foothills Mesic. MLRA 36.

Community 4.2 Seeded Grassland/Shrubland

This phase has big sagebrush co-dominant with the seeded grass.

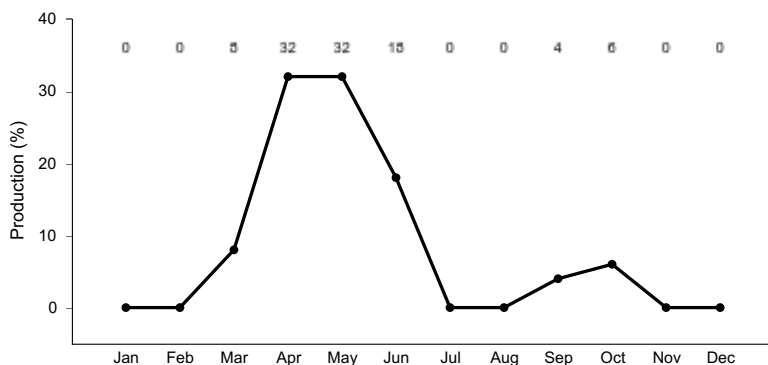


Figure 17. Plant community growth curve (percent production by month). CO0103, MLRA 36 - Foothills Mesic. MLRA 36.

Community 4.3 Seeded Shrubland

This community consists big sagebrush with sparse understory. Sagebrush canopy cover would typically be greater than 35%. Scattered Utah juniper and maybe two-needle pinyon might have encroached. Two-needle pinyon and Utah juniper are natural invaders if stands are found adjacent to this site. Trees left uncontrolled can form dense stands and eventually dominate the site. Nonnative invasive species, such as cheatgrass are present but in insignificant amounts. Biological crusts are typically well developed in the interspaces; however, bare ground is most common in this community phase.

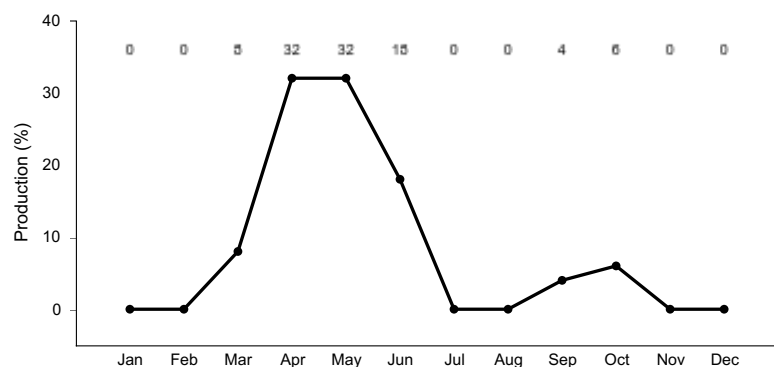


Figure 18. Plant community growth curve (percent production by month). CO0103, MLRA 36 - Foothills Mesic. MLRA 36.

Pathway 4.1A Community 4.1 to 4.2

Time without disturbance and climatic conditions that favor establishment of sagebrush will assist this pathway. Improper grazing on the grasses species can favor shrub establishment and reduce their competitiveness. Also, several consecutive years of droughts can reduce grass cover.

Pathway 4.2A Community 4.2 to 4.1

This transition is caused by naturally occurring fires, herbivory of sagebrush, and/or drought that suppresses sagebrush establishment. These events tend to favor grass establishment. With a mature sagebrush community, this pathway can be caused by high intensity fire that burns hot enough to remove big sagebrush and PJ, if it has started to encroach. Low-intensity fire after sagebrush has had a chance to set seed, improper grazing and or browsing by native ungulates, and possible stem-root pathogens will revert a young sagebrush community to a grassland with the potential to become a sagebrush-grass community once again (Winward, 2004). Vegetation treatments (mechanically, prescribed fire, chemically, etc.) can also be employed to imitate the natural disturbances regime.

Pathway 4.2B Community 4.2 to 4.3

This pathway favors shrub establishment. This pathway is cause by time without disturbance (i.e. fire) and favorable conditions for young sagebrush establishment. Also, Pinyon and juniper will start to encroach under these condition. Improper continuous grazing of perennial grasses will speed up this pathway. This will lead to an old decadent stand of sagebrush with little to no understory.

Pathway 4.3A Community 4.3 to 4.1

This pathway is caused by naturally occurring fires, vegetation treatments (chemical and mechanical), and/or insect herbivory removes the shrubs and possible trees if they have encroached on this site. It reverts the system back to a grassland phase. Depending on the amount of understory present, grasses and forbs may need to be reseeded to aid reestablishment.

State 5 Invasive Annual State

This state is dominated by invasive annual species. Invasive annual species can including cheatgrass, Russian thistle, kochia, halogeton, storksbill geranium, and annual mustards. Generally as ecological conditions deteriorate and perennial vegetation decreases due to disturbance (fire, over grazing, drought, off road vehicle overuse, erosion, etc.) annual forbs and grasses will invade the site. The presence of these species will depend on soil properties and moisture availability; however, these invaders are highly adaptive and can flourish in many locations. Once established, complete removal is difficult but suppression may be possible.

Community 5.1 Sagebrush with Annuals

This state will look big sagebrush with an invasive annual species understory. Frequently, sagebrush canopy cover will be dense due to little to none perennial understory being present. Cheatgrass, and other annual introduced species are now present in the understory. It can function as a plant community this way unless the fire return interval decreases to less than 5 years (Whisenant 1986). Then it will transition to an Annual grasses phase (5.2). This phase is at risk for becoming a cheatgrass-dominated grassland.

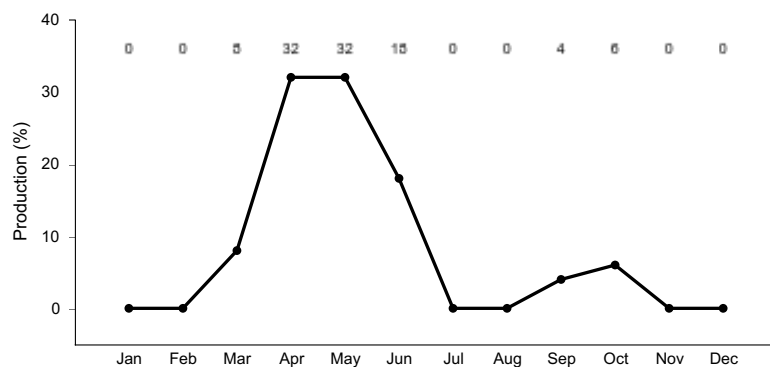


Figure 19. Plant community growth curve (percent production by month). CO0103, MLRA 36 - Foothills Mesic. MLRA 36.

Community 5.2 Annual Monoculture

This community is characterized by an almost a complete monoculture of cheatgrass and/or other invasive annuals. This community can be long-lasting phase if fires and disturbance continue to be frequent.

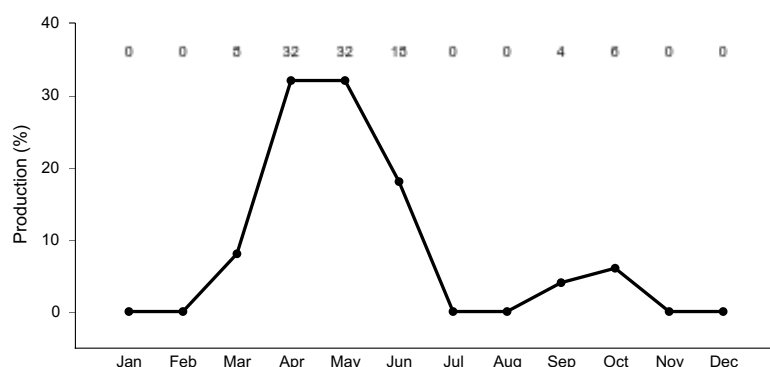


Figure 20. Plant community growth curve (percent production by month). CO0103, MLRA 36 - Foothills Mesic. MLRA 36.

Pathway 5.1A Community 5.1 to 5.2

This pathway occurs when frequent fire or drought remove the big sagebrush, and favor the establishment of cheatgrass or other invasive annuals. In a degraded sagebrush community, cheatgrass will take advantage of the

increased interspaces between plants will typically establish in the interspaces. Once annuals get established it creates a fine fuel load which will decrease the fire return interval. With more frequent fires, sagebrush can be eliminated from the site and a monocultures of invasive annuals can become established. These monocultures can persist for long time periods. Frequent fires also prevent the re-establishment of sagebrush on the site.

Pathway 5.2A

Community 5.2 to 5.1

This pathway occurs when there is a longer fire return interval. Longer fire return intervals can be enabled by using fire suppression and fire breaks to allow perennial vegetation to a change to get established. Along with this seeding and/or proper grazing may allow native perennial plants to return to this community. This pathway has very intensive energy inputs.

Transition T1A

State 1 to 2

The native understory in the reference state has been invade by non-native species. Plant may include cheatgrass, Russian thistle, and annual wheatgrass. Some invasive plants can become established in undisturbed and healthy native plant communities. Possible events that can cause this transition include improper domestic livestock, severe surface disturbances, fire, and/or extended droughts.

Transition T1B

State 1 to 3

This transition is from the native shrub and perennial warm and cool season grass state, to a state that is dominated by two-needle pinyon and Utah juniper encroachment. Events include time without disturbance, insect herbivory, and continuous season long grazing of perennial grasses. Once junipers reach 50 years old they are much harder to kill with fire (Miller and Eddleman, 2001). As canopy density increase, bare ground will increase further increasing the fire return interval, accelerating erosion, increasing run-off and further affecting the watershed functionality. This transition also favors the establishment of invasive annual species such as cheatgrass.

Transition T2A

State 2 to 3

This transition is from the native shrub and perennial warm and cool season grass state, to a state that is dominated by two-needle pinyon and Utah juniper. Events include time without disturbance, insect herbivory, continuous season long grazing of perennial grasses, and tree invasion. Once junipers reach 50 years old they are much harder to kill with fire (Miller and Eddleman, 2001). As canopy density increase, bare ground will increase further increasing the fire return interval, accelerating erosion, increasing run-off and further affecting the watershed functionality. This transition also favors the establishment of invasive annual species such as cheatgrass.

Transition T2C

State 2 to 4

This transition is from a big sagebrush dominated state, to a state that has been seeded with introduced perennial grasses. High energy inputs are needed for this transition. Sagebrush and/or trees will need to be removed with vegetation treatment techniques (I.e. chemical, mechanical, or fire) and introduced species that are adapted to the area and adapted to management needs have been seeded and become established.

Transition T2B

State 2 to 5

This transition is from big sagebrush dominated state, to a state that is dominated by invasive species. Events include establishment of invasive species, fire (<5-20 years), continuous season long grazing of perennial grasses, long term drought.

Restoration pathway R3A

State 3 to 2

Pathways can be one or more of the following: brush treatments, seeding, insect herbivory/pathogen, proper grazing, drought, and/or fire. This pathway requires lots of energy input into the system.

Transition T3B

State 3 to 4

Seeding of introduced/native species (grasses and forbs) is the pathway to state 4. Also, trees are usually removed by mechanical or chemical treatments. This transition requires energy input into the system.

Transition T3A

State 3 to 5

This transition is from a two needle pinyon and Utah juniper state, to a state that is dominated by invasive species. Events would include establishment of invasive species, fire, and other methods of tree removal with an understory that is dominated by invasive annual species (i.e. cheatgrass).

Restoration pathway R4A

State 4 to 2

This return path could possibly occur as a result of long time frames without disturbance. Native plants from adjacent site would slowly establish in the seeded state. Proper grazing from livestock and wildlife which would favor the establishment of native plants. Removal of the Utah juniper and Pinyon as they encroach would also be necessary.

Transition T4B

State 4 to 3

This transition is from the big sagebrush-seeded grass state to a state that is dominated by two-needle pinyon and Utah juniper. Events include, fire suppression, time without disturbance, insect herbivory, continuous season long grazing of perennial grasses, and tree invasion. As canopy density increases, bare ground will increase further increasing the fire return interval, accelerating erosion, increasing run-off and further affecting the watershed functionality. This transition also favors the establishment of invasive annual species such as cheatgrass.

Transition T4A

State 4 to 5

This transition is from a seeded state, to a state that is dominated by invasive species. Events include increased of invasive species, shortened fire return interval, and long term drought. Improper continuous season long grazing of perennial grasses can reduce the time needed for this pathway.

Transition T5A

State 5 to 3

This transition requires fire return intervals to length and fire suppression may be necessary to interrupt the shortened fire return intervals that occur when cheatgrass and other annuals invade. Juniper will encroach onto the site with time and lack of fire. Seeding may be necessary to establish perennial plants. This could require significant energy inputs to make this transition happen.

Restoration pathway R5A

State 5 to 4

Invasive annuals will need to be treated and dominance suppressed enough to allow desired seeded species the ability to compete so that they can become established. Seeding of introduced species is the pathway to state 4. This transition will be difficult and require substantial inputs and management of the site. It may not be practical on a

large scale. Research is needed for species adapted to compete with annual invasive plants, and seeding techniques to add with successful transition from the invasive annual state.

Additional community tables

Table 6. Community 1.1 plant community composition

Group	Common Name	Symbol	Scientific Name	Annual Production (Kg/Hectare)	Foliar Cover (%)
Grass/Grasslike					
1				785–1065	
	western wheatgrass	PASM	<i>Pascopyrum smithii</i>	432–493	–
	Indian ricegrass	ACHY	<i>Achnatherum hymenoides</i>	185–247	–
	blue grama	BOGR2	<i>Bouteloua gracilis</i>	185–247	–
	James' galleta	PLJA	<i>Pleuraphis jamesii</i>	123–185	–
	sand dropseed	SPCR	<i>Sporobolus cryptandrus</i>	62–123	–
	squirreltail	ELEL5	<i>Elymus elymoides</i>	62–123	–
	needle and thread	HECO26	<i>Hesperostipa comata</i>	12–37	–
	Fendler's threeawn	ARPUF	<i>Aristida purpurea var. fendleriana</i>	0–12	–
Forb					
2				62–123	
	woolly plantain	PLPA2	<i>Plantago patagonica</i>	0–25	–
	scarlet globemallow	SPCO	<i>Sphaeralcea coccinea</i>	0–12	–
	woollypod milkvetch	ASPU9	<i>Astragalus purshii</i>	0–12	–
	bulbous springparsley	CYBU	<i>Cymopterus bulbosus</i>	0–12	–
	longleaf phlox	PHLO2	<i>Phlox longifolia</i>	0–12	–
Shrub/Vine					
3				247–308	
	basin big sagebrush	ARTRT	<i>Artemisia tridentata ssp. tridentata</i>	123–185	–
	rubber rabbitbrush	ERNA10	<i>Ericameria nauseosa</i>	62–123	–
	soapweed yucca	YUGL	<i>Yucca glauca</i>	0–49	–
	broom snakeweed	GUSA2	<i>Gutierrezia sarothrae</i>	12–37	–
	plains pricklypear	OPPO	<i>Opuntia polyacantha</i>	0–25	–

Animal community

The following is from 1986 Range Site:

WILDLIFE INTERPRETATIONS:

This range site provides habitats which support a resident animal community that is characterized by deer, cottontail rabbit, jackrabbit, coyote, and various raptors.

LIVESTOCK INTERPRETATIONS:

This site produces excellent forage for cattle and horses during years of average precipitation. It provides fair to good forage for sheep and deer. Care should be exercised so that this site is not overgrazed because of the possibility of gully erosion on steep slopes in drainage ways.

The animal forage preference changes as the growing season progresses. Continuous year-long grazing or grazing from April to October by cattle causes western wheatgrass, galleta, and Indian ricegrass to be replaced by blue

grama, Fendler threeawn, and sand dropseed. A system of deferred grazing, which varies the season of grazing during successive years, is needed to maintain a healthy well-balanced plant community. Rest during different seasons of the year benefits different plants. Spring rest (April-June) benefits cool-season plants such as needle-and-thread, western wheatgrass, and Indian ricegrass. Summer rest (June-August) benefits warm-season plants such as galleta and blue grama. Deferment during late winter and spring reduces competition between grazing animals for palatable shrubs and forbs.

Condition Class - Percent Climax Vegetation - (Ac/AUM) (AUM/Ac)

Excellent - 76-100% - (2.56-3.30) (.39-.30)

Good - 51-75% - (3.45-5.00) (.29-.20)

Fair - 26-50% - (5.26-10.0) (.19-.10)

Poor - 0-25% - (11.1+) (.09)

Hydrological functions

Soils were originally assigned to hydrologic soil groups based on measured rainfall, runoff, and infiltrometer data (Musgrave 1955). Since the initial work was done to establish these groupings, assignment of soils to hydrologic soil groups has been based on the judgment of soil scientists. Assignments are made based on comparison of the characteristics of unclassified soil profiles with profiles of soils already placed into hydrologic soil groups. Most of the groupings are based on the premise that soils found within a climatic region that are similar in depth to a restrictive layer or water table, transmission rate of water, texture, structure, and degree of swelling when saturated, will have similar runoff responses. Four (4) Hydrologic Soil Groups are recognized (A-D). For specific definitions of each hydrologic soil group see the National Engineering Handbook, Chapter 7, Part 630 Hydrology, or visit:<http://policy.nrcs.usda.gov/OpenNonWebContent.aspx?content=22526.wba>

The hydrologic soil groups are based on the following factors:

- intake and transmission of water under the conditions of maximum yearly wetness (thoroughly wet)
- soil not frozen
- bare soil surface
- maximum swelling of expansive clays

The slope of the soil surface is not considered when assigning hydrologic soil groups. In its simplest form, the hydrologic soil group is determined by the water transmitting soil layer with the lowest saturated hydraulic conductivity and depth to any layer that is more or less water impermeable (such as a fragipan or duripan) or depth to a water table (if present) (Caudle, et. al, 2013). The runoff curve numbers are determined by field investigations using hydrologic cover conditions and hydrologic soil groups.

Soils Hydrologic Group

Coarse-Loamy Soils

Buckle - C

Yenlo - B

Fine-Loamy Soils

Payter - A

Florita - B

Hydrologic soil groups are based on estimates of runoff potential. Soils are assigned to one of four groups according to the rate of water infiltration when the soils are not protected by vegetation, are thoroughly wet, and receive precipitation from long-duration storms (Soil Survey Staff, 2017).

The soils in the United States are assigned to four groups (A, B, C, and D) and three dual classes (A/D, B/D, and C/D). The groups are defined as follows:

Group A. Soils having a high infiltration rate (low runoff potential) when thoroughly wet. These consist mainly of deep, well drained to excessively drained sands or gravelly sands. These soils have a high rate of water transmission.

Group B. Soils having a moderate infiltration rate when thoroughly wet. These consist chiefly of moderately deep or deep, moderately well drained or well drained soils that have moderately fine texture to moderately coarse texture. These soils have a moderate rate of water transmission.

Group C. Soils having a slow infiltration rate when thoroughly wet. These consist chiefly of soils having a layer that impedes the downward movement of water or soils of moderately fine texture or fine texture. These soils have a slow rate of water transmission.

Group D. Soils having a very slow infiltration rate (high runoff potential) when thoroughly wet. These consist chiefly of clays that have a high shrink-swell potential, soils that have a high water table, soils that have a claypan or clay layer at or near the surface, and soils that are shallow over nearly impervious material. These soils have a very slow rate of water transmission (Soil Survey Staff, 2017).

Recreational uses

The following is from 1986 Range Site:

This site has medium value regarding recreational uses and natural beauty. Deer hunting provides fair recreation on the site. The numerous forbs that bloom from spring through mid-summer give this site an aesthetically pleasing appearance.

Wood products

The following is from 1986 Range Site:

Not applicable to this site.

Other information

The following is from 1986 Range Site:

Major poisonous plants to livestock:

Broom snakeweed affects cattle and sheep when forage is scarce. Poisoning is not common but will occur on overgrazed ranges. Causes abortion in cattle or may produce weak, underweight calves. Losses are sporadic and will occur when 10 to 20 percent of the body weight of green material is consumed in .5 to 20 weeks.

Field Offices in Colorado:

Durango, Cortez

Type locality

Location 1: La Plata County, CO	
General legal description	Along McDermott Arroyo road about 3 miles north of New Mexico state line on Long Mountain Quad sheet.

Other references

Beymer, R.J. And J.M., Kolpatek. Potential contribution of carbon by microphytic crusts in pinyon-juniper woodlands

Belnap, J. 1994. Potential role of cryptobiotic crusts in semiarid rangelands. Ecology and management of annual rangelands, edited by S.B. Monsen and S.G. Kitchen: USDA Forest Service Technical Report INT-GTR-313.

Intermountain research Station, Ogden UT.

Belnap, J. and D.A. Gillette 1998. Vulnerability of desert soil surfaces to wind erosion: impacts of soil texture and disturbance. *Journal of Arid Environments*. 398:133-142.

Miller, R. F. and L. L. Eddleman. 2001. Spatial and temporal changes of sage grouse habitat in the sagebrush biome. Oregon State University Agricultural Experiment Station. Technical Bulletin 151. Corvallis, OR.

Miller, R. F. and R. J. Tausch. 2002. The role of fire in juniper and pinyon woodlands: a descriptive analysis. *Proceedings: The First National Congress on Fire, Ecology, Prevention, and Management*. San Diego, CA, Nov. 27 - Dec. 1, 2000. Tall Timbers Research Station, Tallahassee, FL.

Musgrave, G.W. 1955. How much of the rain enters the soil? In *Water: U.S. Department of Agriculture Yearbook*. Washington, D.C. P. 151- 159.

National Engineering Handbook. US Department of Agriculture, Natural Resources Conservation Service. Available: <http://www.info.usda.gov/CED/Default.cfm#National%20Engineering%20Handbook> Accessed February 9, 2017.

Passey, H. B., W. K. Hugie, E. W. Williams, and D. E. Ball. 1982. Relationships between soil, plant community, and climate on rangelands of the Intermountain west. USDA, Soil Conservation Service, Tech. Bull. No. 1669.

Soil Conservation Service (SCS). April 1986. Range Site Description for Foothill Valley #347: USDA, Denver Colorado

Soil Survey Staff, Natural Resources Conservation Service, United States Department of Agriculture. Web Soil Survey. Available online at <http://websoilsurvey.nrcs.usda.gov/>. Accessed [3/3/2017].

Tirmenstein, D. 1999. *Artemisia tridentata* spp. tridentata. In: Fire Effects Information System. U.S. Department of Agriculture, Forest Service, Rocky Mountain Research Station, Fire Sciences Laboratory (Producer). Available: <http://www.fs.fed.us/database/feis/>. Accessed February 6, 2008

West, N. E. 1983. Western Intermountain sagebrush steppe. P.311-397 N.E> West (ed.) *Ecosystem of the World 5: Temperate deserts and semi-deserts*. Elsevier Scientific Publishing Company, New York, NY.

Western Regional Climate Center. Retrieved from <http://www.wrcc.dri.edu/summary/Climsmco.html> on February 9, 2017.

Winward, A. H. 2004. Sagebrush of Colorado: taxonomy, distribution, ecology, and management. Denver. Colorado Division of Wildlife.

Whisenant, S. G. 1986. Herbicide use in *Artemisia* and *Chrysothamnus* communities: Reducing damage to non-target species. In E.D. McArthur and B.L. Welch, Compilers, *Proceedings – Symposium on the Biology of Artemisia and Chrysothamnus* pp 115-121 USDA Forest Service Gen. tech. rep. INT-200. 398pp. Ogden, UT.

Contributors

Suzanne Mayne Kinney

Acknowledgments

Project Staff:

Suzanne Mayne-Kinney, Ecological Site Specialist, NRCS MLRA, Grand Junction SSO

Chuck Peacock, MLRA Soil Survey Leader, NRCS MLRA Grand Junction SSO

Program Support:

Rachel Murph, NRCS CO State Rangeland Management Specialist, Denver

Scott Woodhall, NRCS MLRA Ecological Site Specialist-QA Phoenix, AZ

Eva Muller, Regional Director, Rocky Mountain Regional Soil Survey Office, Bozeman, MT
 B.J. Shoup, CO State Soil Scientist, Denver
 Eugene Backhaus, CO State Resource Conservationist, Denver

Partners/Contributors:

Those involved in developing earlier versions of this site description include: Herman Garcia, retired CO State RMS and NRCS MLRA Ecological Site Specialist-QA Phoenix, AZ.

--Site Development and Testing Plan--:

Future work to validate and further refine the information in this Provisional Ecological Site Description is necessary. This will include field activities to collect low-, medium-, and high-intensity sampling, soil correlations, and analysis of that data.

Additional information and data is required to refine the Plant Production and Annual Production tables for this ecological site. The extent of MLRA 36 must be further investigated.

Field testing of the information contained in this Provisional ESD is required. As this ESD is moved to the Approved ESD level, reviews from the technical team, quality control, quality assurance, and peers will be conducted.

Rangeland health reference sheet

Interpreting Indicators of Rangeland Health is a qualitative assessment protocol used to determine ecosystem condition based on benchmark characteristics described in the Reference Sheet. A suite of 17 (or more) indicators are typically considered in an assessment. The ecological site(s) representative of an assessment location must be known prior to applying the protocol and must be verified based on soils and climate. Current plant community cannot be used to identify the ecological site.

Author(s)/participant(s)	Revised and updated by Suzanne Mayne-Kinney on 3/9/2017. Mayne-Kinney used R036XY306UT reference sheet and revised it as it is a possible duplicate ESD. The R036XY306UT reference sheet was prepared by V. Keith Wadman (NRCS Ret.), F.E. Busby (USU), Paul Curtis (BLM), Dana Truman (NRCS), Shane A. Green (NRCS) and Ashley Garrelts (NRCS)
Contact for lead author	
Date	03/09/2017
Approved by	Rachel Murph, State Rangeland Management Spec., USDA NRCS Colorado
Approval date	
Composition (Indicators 10 and 12) based on	Annual Production

Indicators

1. **Number and extent of rills:** None to very rare. Any rills present should be short in length (less than 6 feet long) and only occur where increased runoff occurs on lower part of steeper slopes and areas below exposed bedrock. Old rills should be weathered and muted in appearance. An increase in rill formation may be seen after disturbance events such as recent fire or thunderstorms.

2. **Presence of water flow patterns:** None to rare. Flow patterns typically flow around perennial plant bases and show no evidence of erosion. They are short (less than 6 feet long), stable, and not connected.

3. **Number and height of erosional pedestals or terracettes:** Plants should show no signs of pedestalling. Terracettes occur very rarely.
-
4. **Bare ground from Ecological Site Description or other studies (rock, litter, lichen, moss, plant canopy are not bare ground):** In the reference state bare ground ranges from 15 to 40%. Areas with well-developed biological soil crust should not be counted as bare ground. Areas with poorly developed biological soils crust that are interpreted as functioning as bare ground (therefore they would be susceptible to raindrop splash erosion) should be recorded as bare ground.
-
5. **Number of gullies and erosion associated with gullies:** None to very rare. Any gullies present are sparsely located across the landscape and are usually caused by run-in water from adjacent sites that are dominated by exposed bed rock or dissected slopes. If present gullies have been re-stabilized by perennial vegetation.
-
6. **Extent of wind scoured, blowouts and/or depositional areas:** Minor evidence of wind generated soil movement, slight deposition at the base of shrubs is acceptable; however blowouts or excessive deposition areas are not.
-
7. **Amount of litter movement (describe size and distance expected to travel):** Most litter resides in place with some redistribution caused by water and wind movement. Fine litter (<1/4 inch in diameter) may be moved up to 2-3 ft. with deposition occurring at obstruction. Sites with well-developed crust cover such as plant community 1.3, may exhibit litter being trapped by the crust pinnacles. The majority of litter accumulates at the base of plants or in soil depression adjacent to the plant. Woody stems (those greater than 1/4 inch in diameter) are not likely to move under normal conditions.
-
8. **Soil surface (top few mm) resistance to erosion (stability values are averages - most sites will show a range of values):** 80 to 90% of this site should have an erosion rating of 5 to 6. 10 to 20% may have a rating of 3 to 5. Surface texture varies from sandy loam and loam.
-
9. **Soil surface structure and SOM content (include type of structure and A-horizon color and thickness):** Soil surface depth varies from 4 to 10 inches. There is little difference in the soils under the plants when compared to soils in the interspaces. Use the specific information for the soil you are assessing found in the published soil survey to supplement this description.
-
10. **Effect of community phase composition (relative proportion of different functional groups) and spatial distribution on infiltration and runoff:** Bare spaces are small, rounded in shape, and are unconnected. The presence of perennial grasses, shrubs, and any well-developed biological soil crusts (moss, pinnacled lichen, and light cyanobacteria) will break raindrop impact and splash erosion. The spatial distribution of vascular plants, non-vascular communities (when present), and interspaces provide detention storage and surface roughness that slows down runoff, allowing time for infiltration.
-
11. **Presence and thickness of compaction layer (usually none; describe soil profile features which may be mistaken for compaction on this site):** None. Naturally occurring soil horizons may be harder than the surface

because of an accumulation of clay (soil texture change) or calcium carbonate and should not be considered as compaction layers.

12. **Functional/Structural Groups (list in order of descending dominance by above-ground annual-production or live foliar cover using symbols: >>, >, = to indicate much greater than, greater than, and equal to):**

Dominant: Perennial grasses (western wheatgrass, blue grama, Indian ricegrass, galleta) > non-sprouting shrubs (Basin big sagebrush) >

Sub-dominant: forbs > sprouting shrubs (rubber rabbitbrush)

Other:

Additional: Perennial and annual forbs can be expected to vary widely in their expression in the plant community based upon departures from average growing conditions. Biological crusts (lichen, moss, and cyanobacteria) should be present but are variable based on plant community and state. In the reference state biological crust cover is characterized by cyanobacteria, pinnated lichen, and moss with some continuity. Typically moss and lichen clumps will be concentrated under the plant canopy and cyanobacteria will be found in the interspaces.

Functional/structural groups may appropriately contain non-native species if their ecological function is the same as the native species in the reference state.

13. **Amount of plant mortality and decadence (include which functional groups are expected to show mortality or decadence):** During years with average to above average precipitation, there should be very little recent mortality or decadence apparent in either the shrubs or grasses. Some mortality of bunchgrass and other shrubs may occur during very severe (long term) droughts.

14. **Average percent litter cover (%) and depth (in):** Litter cover (including under plants) ranges from 3-15%, nearly all of which should be fine litter. Variability is due to the herbaceous production differences from one year to the next. Depth is generally 1 leaf thickness in the interspaces and up to ¼ inch under plant canopies. Litter can increase up to 20-25% immediately following leaf drop or after favorable conditions increase native annual forb production.

15. **Expected annual annual-production (this is TOTAL above-ground annual-production, not just forage annual-production):** 800 lbs./ac, low precipitation years, 1100 lbs./ac/ average precipitation years, 1300 lbs./ac above average precipitation years. After extended drought or the first growing season following a wildfire, production may be significantly reduced by 200-500 lbs./ac.

16. **Potential invasive (including noxious) species (native and non-native). List species which BOTH characterize degraded states and have the potential to become a dominant or co-dominant species on the ecological site if their future establishment and growth is not actively controlled by management interventions. Species that become dominant for only one to several years (e.g., short-term response to drought or wildfire) are not invasive plants. Note that unlike other indicators, we are describing what is NOT expected in the reference state for the ecological site:** Known invasive species include cheatgrass (*Bromus tectorum*), broom snakeweed (*Gutierrezia sarothrae*), tansy mustard (*Descurainia pinnata*), annual stickseed (*Lappula* sp.), annual *Cryptantha* (*Cryptantha* sp.), Russian thistle (*Salsola tragus*), Single Needle Pinyon (*Pinus edulis*), and Utah Juniper (*Juniperus osteosperma*).

-
17. **Perennial plant reproductive capability:** All perennial plants should have the ability to reproduce sexually or asexually in most years. The only limitations are weather-related, wildfire, natural diseases and insects.
-