

Ecological site FX052X03X029 Limy-Steep (Lystp) Dry Shrubland

Last updated: 7/03/2019
Accessed: 05/18/2024

General information

Provisional. A provisional ecological site description has undergone quality control and quality assurance review. It contains a working state and transition model and enough information to identify the ecological site.

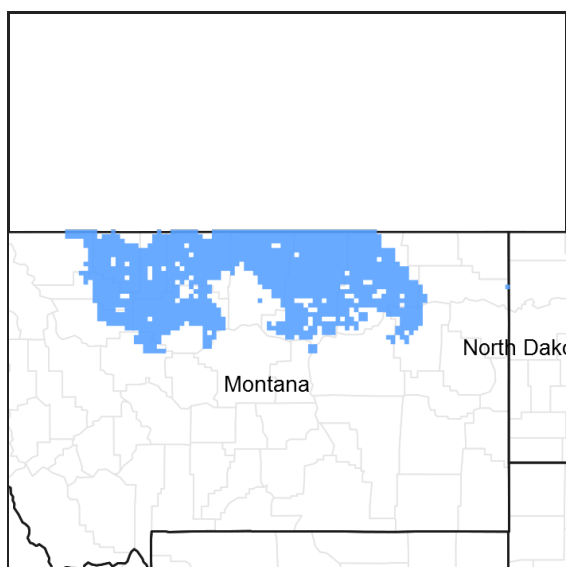


Figure 1. Mapped extent

Areas shown in blue indicate the maximum mapped extent of this ecological site. Other ecological sites likely occur within the highlighted areas. It is also possible for this ecological site to occur outside of highlighted areas if detailed soil survey has not been completed or recently updated.

MLRA notes

Major Land Resource Area (MLRA): 052X–Brown Glaciated Plains

The Brown Glaciated Plains, MLRA 52, is an expansive, agriculturally and ecologically significant area. It consists of approximately 14.5 million acres and stretches across 350 miles from east to west, encompassing portions of 15 counties in north-central Montana. This region represents the southwestern limit of the Laurentide Ice Sheet and is considered to be the driest and westernmost area within the vast network of glacially derived prairie pothole landforms of the northern Great Plains. Elevation ranges from 2,000 feet (610 meters) to 4,600 feet (1,400 meters).

Soils are primarily Mollisols, but Entisols, Inceptisols, Alfisols, and Vertisols are also common. Till from continental glaciation is the predominant parent material, but alluvium and bedrock are also common. Till deposits are typically less than 50 feet thick, and in some areas glacially deformed bedrock occurs at or near the soil surface (Soller, 2001). Underlying sedimentary bedrock largely consisting of Cretaceous shale, sandstone, and mudstone (Vuke et al., 2007) is commonly exposed on hillslopes, particularly along drainageways. Significant alluvial deposits occur along glacial outwash channels and major drainages, including portions of the Missouri, Teton, Marias, Milk, and Frenchman Rivers. Large glacial lakes, particularly in the western half of the MLRA, deposited clayey and silty lacustrine sediments (Fullerton et al., 2013).

Much of the western portion of this MLRA was glaciated towards the end of the Wisconsin age, with the maximum glacial extent occurring approximately 20,000 years ago (Fullerton et al., 2004). The result is a geologically young

landscape that is predominantly a level till plain interspersed with lake plains and dominated by soils in the Mollisol and Vertisol orders. These soils are very productive and generally are well suited to dryland farming. Much of this area is aridic-ustic. Crop-fallow dryland wheat farming is the predominant land use. Areas of rangeland typically are on steep hillslopes along drainages.

The rangeland, much of which is native mixedgrass prairie, increases in abundance in the eastern half of the MLRA. The Wisconsin-age till in the north-central part of this area typically formed large disintegration moraines with steep slopes and numerous poorly drained potholes. A large portion of Wisconsin-age till occurring on the type of the level terrain that would typically be optimal for farming has large amounts of less-suitable sodium-affected Natrustalfs. Significant portions of Blaine, Phillips, and Valley Counties were glaciated approximately 150,000 years ago during the Illinoian age. Due to erosion and dissection of the landscape, many of these areas have steeper slopes and more exposed bedrock than areas glaciated during the Wisconsin age (Fullerton and Colton, 1986).

While much of the rangeland in the aridic-ustic portion of MLRA 52 is classified as belonging to the “dry grassland” climatic zone, sites in portions of southern MLRA 52 may belong to the “dry shrubland” climatic zone. The dry shrubland zone represents the northernmost extent of the big sagebrush (*Artemisia tridentata*) steppe on the Great Plains. Because similar soils occur in both southern and northern portions of the MLRA, it is currently hypothesized that climate is the primary driving factor affecting big sagebrush distribution in this area. However, the precise factors are not yet fully understood.

Sizeable tracts of largely unbroken rangeland in the eastern half of the MLRA and adjacent southern Saskatchewan are home to the Northern Montana population of greater sage grouse (*Centrocercus urophasianus*), and large portions of this area are considered to be a Priority Area for Conservation (PAC) by the U.S. Fish and Wildlife Service (U.S. Fish and Wildlife Service, 2013). This population is unique among sage grouse populations in the fact that many individuals overwinter in the big sagebrush steppe (dry shrubland) in the southern portion of the MLRA and then migrate to the northern portion of the MLRA, which lacks big sagebrush (dry grassland), to live the rest of the year (Smith, 2013).

Areas of the till plain near the Bearpaw and Highwood Mountains as well as the Sweetgrass Hills and Rocky Mountain foothills are at higher elevations, receive higher amounts of precipitation, and have a typic-ustic moisture regime. These areas have significantly more rangeland production than the drier aridic-ustic portions of the MLRA and have enough moisture to produce crops annually rather than just bi-annually, as in the drier areas. Ecological sites in this higher precipitation area are classified as the moist grassland climatic zone.

Classification relationships

NRCS Soil Geography Hierarchy

- Land Resource Region: Northern Great Plains
- Major Land Resource Area (MLRA): 052 Brown Glaciated Plains
- Climate Zone: Dry Shrubland

National Hierarchical Framework of Ecological Units (Cleland et al., 1997; McNab et al., 2007)

- Domain: Dry
- Division: Temperate Steppe
- Province: Great Plains-Palouse Dry Steppe Province 331
- Section: Northwestern Glaciated Plains 331D
- Subsection: Montana Glaciated Plains 331Dh
- Landtype Association/Landtype Phase: N/A

National Vegetation Classification Standard (Federal Geographic Data Committee, 2008)

- Class: Xeromorphic Woodland, Scrub and Herb Vegetation Class (3)
- Subclass: Cool Semi-Desert Scrub and Grassland Subclass (3.B)
- Formation: Cool Semi-Desert Scrub and Grassland Formation (3.B.1)
- Division: Cool Semi-Desert Scrub and Grassland Division (3.B.1.Ne)
- Macrogroup: *Artemisia tridentata* - *Artemisia tripartita* ssp. *tripartita* - *Purshia tridentata* Steppe and Shrubland Macrogroup (3.B.1.Ne.3)
- Group: *Artemisia tridentata* ssp. *wyomingensis* - *Artemisia tridentata* ssp. *tridentata* Steppe and Shrubland Group (3.B.1.Ne.3.a)

- Alliance: *Artemisia tridentata* ssp. *wyomingensis* Dry Steppe and Shrubland Alliance
- Association: *Artemisia tridentata* ssp. *wyomingensis* / *Carex filifolia* Shrubland

EPA Ecoregions

- Level 1: Great Plains (9)
- Level 2: West-Central Semi-Arid Prairies (9.3)
- Level 3: Northwestern Glaciated Plains (42)
- Level 4: North-central Brown Glaciated Plains (42o) and Glaciated Northern Grasslands (42j)

Ecological site concept

This provisional ecological site occurs in the Dry Shrubland climatic zone of MLRA 52. Figure 1 illustrates the distribution of this ecological site based on current data. This map is approximate, is not intended to be definitive, and may be subject to change. Onsite evaluations are necessary, particularly in boundary or intergrade areas where ecological sites from multiple climate zones may overlap. Limy Steep Dry Shrubland is an extensive ecological site occurring on most landscapes in MLRA 52. It occurs on hillslopes, till plains, and bluffs where slopes are 15 percent or greater. This site is typically on convex backslopes or shoulders.

The distinguishing characteristics of this site are moderately steep to very steep slopes and a relatively young, undeveloped soil profile, which is evidenced by increased calcium carbonate (lime) concentrations in the upper 5 inches, and weak structure. Soils are typically deep to very deep (more than 40 inches) and derived from glacial till. Soil surface textures are typically in the fine-loamy textural family, meaning they contain 18 to 35 percent clay. Calcium carbonate (CaCO₃) equivalent is 5 percent or more (as evidenced by strong or violet effervescence) in the upper 5 inches with CaCO₃ concentration increasing with depth. Characteristic vegetation is plains muhly (*Muhlenbergia cuspidata*), needle and thread (*Hesperostipa comata*), threadleaf sedge (*Carex filifolia*), and Wyoming big sagebrush (*Artemisia tridentata* subsp. *wyomingensis*).

Associated sites

FX052X03X032	Loamy (Lo) Dry Shrubland This site occurs adjacent to or upslope from the Limy Steep Dry Shrubland ecological site. It generally occurs on summits or footslopes with slopes where the slope is less than 15 percent and the slope shape is linear or concave.
FX052X03X030	Limy (Ly) Dry Shrubland This site occurs on slopes less than 15 percent adjacent to or upslope from the Limy Steep Dry Shrubland ecological site. It is generally on shoulders or crests with a convex slope shape; whereas, the Limy Steep Dry Shrubland ecological site is in backslope positions.
FX052X03X040	Loamy-Steep (Lostp) Dry Shrubland This site occurs on slopes 15 percent or greater adjacent to the Limy Steep Dry Shrubland ecological site. It is generally in backslope positions with a linear or concave slope shape; whereas, Limy Steep Dry Shrubland ecological site is in backslope positions with a convex slope shape.

Similar sites

FX052X01X029	Limy-Steep (Lystp) Dry Grassland This site differs from Limy Steep Dry Shrubland ecological site in that it has slightly cooler annual temperatures and supports silver sagebrush rather than big sagebrush.
FX052X03X040	Loamy-Steep (Lostp) Dry Shrubland This site differs from the Limy Steep Dry Shrubland ecological site in that soils contain less than 5 percent calcium carbonate in the upper 5 inches (as evidenced by lack of effervescence).
FX052X03X030	Limy (Ly) Dry Shrubland This site differs from the Limy Steep Dry Shrubland ecological site in that slopes are less than 15 percent.

Table 1. Dominant plant species

Tree	Not specified
------	---------------

Shrub	Not specified
Herbaceous	Not specified

Legacy ID

R052XY711MT

Physiographic features

Limy Steep Dry Shrubland is an extensive ecological site occurring primarily in the southern portions of MLRA 52. This site is typically found on shoulder and backslope positions on moraines, bluffs, and hillslopes. These areas have higher runoff potential and drier conditions compared to adjacent sites. Consequently, soil development is weaker, plant production is lower, and soil organic matter is less. Slopes vary from 15 to 60 percent.

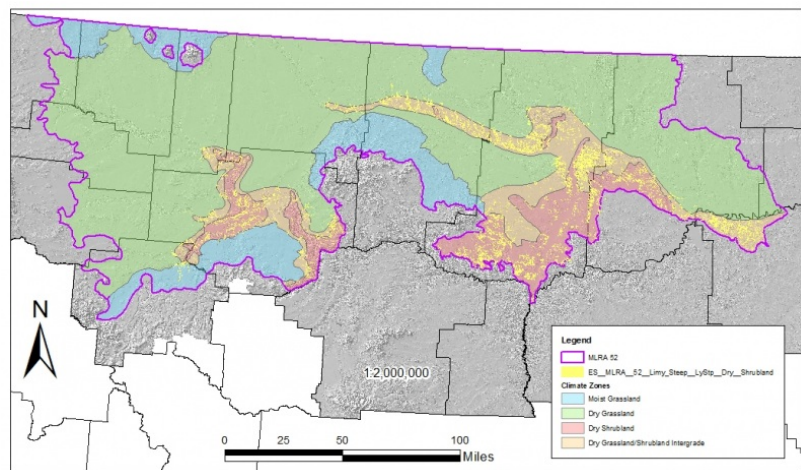


Figure 2. Figure 1. General distribution of the Limy Steep Dry Shrubland ecological site by map unit extent.

Table 2. Representative physiographic features

Hillslope profile	(1) Shoulder (2) Backslope
Landforms	(1) Till plain > Hillslope (2) Till plain > Moraine
Elevation	610–1,180 m
Slope	15–60%
Aspect	Aspect is not a significant factor

Climatic features

The Brown Glaciated Plains is a semi-arid region with a temperate continental climate that is characterized by frigid winters and warm to hot summers (Cooper et al., 2001). The average frost-free period for this ecological site is 125 days. The majority of precipitation occurs as steady, soaking, frontal system rains in late spring to early summer. Summer rainfall comes mainly from convection thunderstorms that typically deliver scattered amounts of rain in intense bursts. These storms may be accompanied by damaging winds and large-diameter hail and result in flash flooding along low-order streams. Severe drought occurs on average in 2 out of 10 years. Annual precipitation ranges from 10 to 14 inches, and 70 to 80 percent of this occurs during the growing season (Cooper et al., 2001). Extreme climatic variations, especially droughts, have the greatest influence on species cover and production (Coupland, 1958, 1961; Biondini et al., 1998).

During the winter months, the western half of MLRA 52 commonly experiences chinook winds, which are strong west to southwest surface winds accompanied by abrupt increases in temperature. The chinook winds are strongest on the western boundary of the MLRA near the Rocky Mountain foothills and decrease eastward. In

addition to producing damaging winds, prolonged chinook episodes can result in drought or vegetation kills due to a reaction of plants to a “false spring” (Oard, 1993).

Table 3. Representative climatic features

Frost-free period (average)	125 days
Freeze-free period (average)	145 days
Precipitation total (average)	330 mm

Climate stations used

- (1) CONTENT 3 SSE [USC00241984], Zortman, MT
- (2) FT BENTON [USC00243113], Fort Benton, MT
- (3) FT PECK PWR PLT [USC00243176], Fort Peck, MT
- (4) LOMA 1 WNW [USC00245153], Loma, MT
- (5) MALTA 7 E [USC00245338], Malta, MT
- (6) MALTA 35 S [USC00245340], Zortman, MT

Influencing water features

This is a semi-arid upland ecological site and the water budget is normally contained within the soil pedon. During intense precipitation events, precipitation rates frequently exceed infiltration rates and this site delivers moisture to downslope sites via surface runoff. Moisture loss through evapotranspiration exceeds precipitation for the majority of the growing season. Soil moisture levels are greatest in May and June but rarely reach field capacity in the upper 40 inches. Soil moisture is the primary limiting factor for plant production on this ecological site.

Soil features

The Hillon series is the soil that best represents the central concept for this ecological site, but only when it occurs on slopes 15 percent or greater. This concept occurs on more than 450,000 acres of MLRA 52 but Hillon soil also occurs on the Limy Dry Shrubland ecological site. Hillon is in the Ustorthents great group and is characterized by a surface horizon that lacks enough organic matter to have a mollic epipedon and by little soil development in the subsurface horizons. It is in the fine-loamy family, meaning it contains between 18 and 35 percent clay in the particle-size control section, and has mixed mineralogy. The typical parent material, for this series is calcareous glacial till, but this ecological site may also occur on soils derived from glaciofluvial deposits, or till over residuum. The soil moisture regime for this and all other soils in this ecological site concept is ustic bordering on aridic, which means that the soils are moist in some or all parts for either 180 cumulative days or 90 consecutive days during the growing season but are dry in some or all parts for over 90 cumulative days. These soils have a frigid soil temperature regime (Soil Survey Staff, 2014).

Surface textures found in this site are most frequently loam or clay loam and typically contain between 18 to 35 percent clay. The underlying horizons typically contain 18 to 40 percent clay and also have loam, clay loam, or clay textures. Organic matter content in the surface horizon typically ranges from 1 to 2 percent, and moist colors vary from olive brown (2.5Y 4/3) to very dark grayish brown (2.5Y 3/2). Calcium carbonate equivalent in the upper 5 inches of soil is 5 percent or more and typically increases with depth. In the upper 20 inches, electrical conductivity is less than 4 and the sodium absorption ratio is less than 13. Soil pH is slightly to moderately alkaline in the surface horizon and moderately to strongly alkaline in the subsurface horizons. The soil depth class for this site can be moderately deep (between 20 to 40 inches to bedrock) in places where bedrock is present but is typically very deep. Content of coarse fragments is less than 35 percent in the upper 20 inches of soil and typically less than 15 percent.

Table 4. Representative soil features

Parent material	(1) Till (2) Glaciofluvial deposits
Surface texture	(1) Loam (2) Clay loam

Drainage class	Well drained
Soil depth	51–183 cm
Available water capacity (0-101.6cm)	14.99–17.53 cm
Calcium carbonate equivalent (0-12.7cm)	5–10%
Electrical conductivity (0-50.8cm)	0–3 mmhos/cm
Sodium adsorption ratio (0-50.8cm)	0–12
Soil reaction (1:1 water) (0-101.6cm)	7.4–9
Subsurface fragment volume <=3" (0-50.8cm)	0–34%
Subsurface fragment volume >3" (0-50.8cm)	0–34%

Ecological dynamics

The information in this ecological site description, including the state-and-transition model (STM), was developed based on historical data, current field data, professional experience, and a review of the scientific literature. As a result, all possible scenarios or plant species may not be included. Key indicator plant species, disturbances, and ecological processes are described to inform land management decisions.

The Limy Steep Dry Shrubland provisional ecological site in MLRA 52 consists of three states: The Reference State (1), the Shortgrass State (2), and the Invaded State (3). Plant communities associated with the Limy Steep Dry Shrubland ecological site evolved under the combined influences of climate, grazing, and fire. Extreme climatic variability results in frequent droughts, which can have the greatest influence on the relative contribution of species cover and production (Coupland, 1958, 1961; Biondini et al., 1998). Due to the dominance of cool-season graminoids, annual production is highly dependent upon mid to late-spring precipitation (Heitschmidt and Vermeire, 2005; Anderson, 2006).

Native grazers also shaped these plant communities. American bison (*Bison bison*) were the dominant historic grazer, but pronghorn (*Antilocapra americana*), elk (*Cervus canadensis*), and deer (*Odocoileus* spp.) were also common. Small mammals such as prairie dogs (*Cynomys* spp.) and ground squirrels (*Urocitellus* spp.) also influenced this plant community (Salo et al., 2004). Grasshoppers and periodic outbreaks of Rocky Mountain locusts (*Melanoplus spretus*) also played an important role in the ecology of these communities (Lockwood, 2004).

Fire is a critical dynamic on the Limy Steep Dry Shrubland ecological site. The historic ecosystem experienced relatively frequent lightning-caused fires. Historically, Native Americans also set frequent fires. The majority of lightning-caused fires occurred in July and August; whereas, Native Americans typically set fires during spring and fall to correspond with the movement of bison (Higgins, 1986). It is difficult to precisely determine the fire return interval in the Dry Shrubland climate zone, but estimates range from 6 to 25 years (Bragg, 1995) to 10 to 70 years (Howard, 1999). It is believed that the frequency and intensity of fire would be less on the Limy Steep Dry Shrubland ecological site than on adjacent sites due to the broken topography and sparser vegetation. Generally, the herbaceous vegetation is resilient to fire and the primary effects of fire are reduction of litter and short term fluctuations in production (Vermeire et al., 2011, 2014). However, studies have shown that very short fire return intervals (less than 5 years) can have a negative effect, shifting species composition toward warm-season, short-statured grasses (Shay et al., 2001; Smith and McDermid, 2014). Conversely, fire has a significant effect on Wyoming big sagebrush cover. Wyoming big sagebrush is a non-sprouting shrub and is most often killed by fire (Howard, 1999). Often, it may take 30 years or more for a stand to recover following fire (Watts and Wambolt, 1996; Wambolt et al., 2001). It is likely that fire return intervals shorter than 30 years will result in a reduction in Wyoming big sagebrush cover over the long term. Long-term fire suppression in the 20th century removed periodic fire from the ecosystem altogether. Very little is known how this has affected the Dry Shrubland ecosystem. Some studies suggest an increase in Wyoming big sagebrush cover, presumably due to fire suppression (Bloom-Cornelius, 2011).

Increased decadence in Wyoming big sagebrush may also occur (Howard, 1999), but these results are inconclusive.

Lack of periodic fires can also result in an increase in litter accumulation and, in some cases, provide ideal conditions for seed germination and seedling establishment of non-native annual brome species, such as field or Japanese brome (*Bromus arvensis*) (Whisenant, 1990). These species have become naturalized in relatively undisturbed grasslands (Ogle et al., 2003; Harmoney, 2007) and can be present in any state within the scope of this ecological site. They typically do not have a significant ecological impact; however, their presence can reduce the production of cool-season perennial grasses in some cases (Haferkamp et al., 1997). Their abundance varies depending on precipitation and germination conditions. The fire-recovery cycle is a critical element in managing the Dry Shrubland ecosystem. Further study is needed in this area to determine a balanced and sustainable fire cycle.

Improper grazing of this site can result in a reduction in the cover of the cool-season midgrasses and eventually a decrease in other cool-season graminoids and an increase in blue grama (Smoliak et al., 1972; Smoliak, 1974). Improper grazing practices include any practices that do not allow sufficient opportunity for plants to physiologically recover from a grazing event or multiple grazing events within a given year, and that do not provide adequate cover to prevent soil erosion over time. These practices may include, but are not limited to, overstocking, continuous grazing, and inadequate seasonal rotation moves over multiple years. Periods of extended drought (approximately 3 years or greater) can reduce mid-statured, cool-season grasses and shift the species composition of this community to one dominated by blue grama (Coupland, 1958, 1961). Long-term improper grazing can eventually reduce threadleaf sedge as well as mid-statured grasses and shift the species composition of this community to one dominated by shortgrasses, such as blue grama and Sandberg bluegrass. Cover of prairie sagewort can increase.

Due to the increased concentration of calcium carbonate near the soil surface, the weakly developed soil profile, and steep slopes, this ecological site is not suitable for cropland. In general, this site has remained intact, although many acres have been invaded by aggressive, perennial introduced grasses, particularly crested wheatgrass. Seeding of introduced grasses, particularly crested wheatgrass (*Agropyron cristatum*), was a common practice on eroded and abandoned agricultural areas after the droughts of the 1930s (Rogler and Lorenz, 1983). Crested wheatgrass is a highly drought tolerant and competitive cool season, perennial bunchgrass (Lesica and DeLuca, 1996). Crested wheatgrass can invade relatively undisturbed grasslands, reducing cover and production of native cool-season midgrasses (Heidinga and Wilson, 2002; Henderson and Naeth, 2005). Limy Steep Dry Shrubland ecological sites adjacent to these seeded areas are particularly prone to invasion.

The state-and-transition model (STM) diagram (Figure 2) suggests possible pathways that plant communities on this site may follow as a result of a given set of ecological processes and management. The site may also support states not displayed in the STM diagram. Landowners and land managers should seek guidance from local professionals before prescribing a particular management or treatment scenario. Plant community responses vary across this MLRA due to variability in weather, soils, and aspect. The reference community phase may not necessarily be the management goal. The lists of plant species and species composition values are provisional and are not intended to cover the full range of conditions, species, and responses for the site. Species composition by dry weight is provided when available and is considered provisional based on the sources identified in the narratives associated with each community phase.

State 1: Reference State

The Reference State (1) contains three community phases characterized by mid-statured cool-season bunchgrasses, sedges, and Wyoming big sagebrush, a perennial, evergreen, non-sprouting shrub. Lesser spikemoss, also known as dense clubmoss (*Selaginella densa*), is typically absent on this site. This state evolved under the combined influences of climate, grazing, and fire with climatic variation having the greatest influence on cover and production. In general, this state was resilient to grazing, although heavy grazing could influence species composition in localized areas.

Phase 1.1: Shrubland Community Phase

The Shrubland Community Phase (1.1) is dominated by mid-statured bunchgrasses, threadleaf sedge, and Wyoming big sagebrush. Plains muhly and needle and thread are common mid-statured bunchgrasses on this site. Rhizomatous wheatgrass species such as western wheatgrass (*Pascopyrum smithii*) and thickspike wheatgrass (*Elymus lanceolatus*) are uncommon on this site, generally less than 10 percent of total species composition. Short-statured, grasses, such as blue grama (*Bouteloua gracilis*), prairie Junegrass (*Koeleria macrantha*), and Sandberg

bluegrass (*Poa secunda*), are common although cover and production are low. Common forbs are scarlet globemallow (*Sphaeralcea coccinea*), hairy false goldenaster (*Heterotheca villosa*), and spiny or Hood's phlox (*Phlox hoodii*). The principle shrub on this site is Wyoming big sagebrush, canopy cover is typically 5 to 15 percent. Subshrubs include prairie sagewort (*Artemisia frigida*), winterfat (*Krascheninnikovia lanata*), and, occasionally, soapweed yucca (*Yucca glauca*). The approximate species composition of the reference plant community is as follows:

Percent composition by weight*

Plains muhly 20%

Needle and thread 20%

Threadleaf sedge 20%

Blue grama 5%

Other native grasses 10%

Perennial forbs 5%

Wyoming big sagebrush 15% (canopy cover 5-15%)

Other shrubs/subshrubs 5%

Estimated Total Annual Production (lbs./ac)*

Low - 325

Representative Value - 500

High - 675

Average Shrub Height (inches)*

Low - 3

Representative Value - 7

High - 12

*Estimated based on current data – subject to revision

Phase 1.2: Post-Fire Community Phase

The Post-Fire Community Phase (1.2) occurs when the plant community is burned either by wildfire or prescribed fire and may persist for as long as 30 years after burning. It is characterized by a plains muhly, needle and thread, and threadleaf sedge plant community. The rhizomatous wheatgrasses are present, although not prevalent, and composition is generally 10 percent or less. Short-statured grasses, such as blue grama, prairie Junegrass, and Sandberg bluegrass are common. Total cover of shortgrasses is similar to Shrubland Community Phase (1.1). Wyoming big sagebrush will be eliminated or nearly so immediately following fire. Recovery of Wyoming big sagebrush depends on many factors including climate, proximity to a seed source, and fire intensity. Typically, there is little or no regeneration for 5 to 10 years post-fire, then cover begins to increase gradually until an equilibrium level is reached (Watts and Wambolt, 1996). Generally recovery is prolonged, sometimes taking as long as 30 years (Wambolt et al., 2001).

Phase 1.3: At-Risk Community Phase

The At-Risk Community Phase (1.3) occurs when site condition declines due to drought or improper grazing management. Multiple fires in close succession can also transition the site to this phase. This community phase is characterized by a threadleaf sedge-shortgrass plant community. Plains muhly may be rare or absent in this phase. Other mid-statured grasses such as needle and thread are declining in cover and vigor. Shortgrasses, particularly the warm-season, mat-forming blue grama, are increasing in this phase. Prairie Junegrass, Sandberg bluegrass, and the subshrub, prairie sagewort, also increase in this phase. Cover of Wyoming big sagebrush will vary depending on the length of time since the last burn.

Community Phase Pathway 1.1a

Fire will transition the Shrubland Community Phase (1.1) to the Post-Fire Community Phase (1.2). Wyoming big sagebrush is killed and perennial grasses will dominate the site.

Community Phase Pathway 1.1b

Drought, improper grazing management, or a combination of these factors can shift the Shrubland Community Phase (1.1) to the At Risk Community Phase (1.3). These factors favor an increase in blue grama and a decrease in cool-season midgrasses (Coupland, 1961; Shay et al., 2001). Wyoming big sagebrush cover will be similar to the Shrubland Community Phase (1.1).

Community Phase Pathway 1.2a

Thirty years or more of natural vegetative regrowth will transition the Post-Fire Community Phase (1.2) to the Shrubland Community Phase (1.1). Thirty years or more without fire permits Wyoming big sagebrush to recolonize the site.

Community Phase Pathway 1.2b

Drought, improper grazing management, multiple fires in close succession, or a combination of these factors can shift the Post-Fire Community Phase (1.2) to the At Risk Community Phase (1.3). These factors favor an increase in blue grama and a decrease in cool-season midgrasses (Coupland, 1961; Shay et al., 2001). Wyoming big sagebrush cover will be similar to the Post-Fire Community Phase (1.2).

Community Phase Pathway 1.3a

Less than 30 years post-fire; normal or above-average precipitation and proper grazing management transitions the At Risk Community Phase (1.3) to the Post-Fire Community Phase (1.2).

Community Phase Pathway 1.3b

Thirty years or more post-fire; normal or above-average precipitation and proper grazing management transitions the At Risk Community Phase (1.3) to the Shrubland Community Phase (1.1).

Transition T1A

Prolonged drought, improper grazing practices, or a combination of these factors weaken the resilience of the Reference State (1) and drive its transition to the Shortgrass State (2). The Reference State (1) transitions to the Shortgrass State (2) when mid-statured graminoids become rare and contribute little to production. Shortgrasses such as blue grama, Sandberg bluegrass, and prairie Junegrass dominate the plant community. Threadleaf sedge cover is reduced, and vigor is low.

Transition T1B

The Reference State (1) transitions to the Invaded State (3) when aggressive perennial grasses or noxious weeds invade the Shortgrass State (2). Crested wheatgrass, in particular, is a concern when native plant communities are adjacent to seeded pastures. Exotic plant species dominate the site in terms of cover and production. Site resilience has been substantially reduced. In addition, other rangeland health attributes, such as reproductive capacity of native grasses (Henderson and Naeth, 2005) and soil quality (Smoliak and Dormaar, 1985; Dormaar et al., 1995), have been substantially altered from the Reference State (1).

State 2: Shortgrass State

The Shortgrass State (2) consists of two community phases. The dynamics of this state are driven by long-term drought, improper grazing management, or a combination of these factors. Blue grama increases with long-term improper grazing at the expense of cool-season midgrasses (Coupland 1961; Biondini and Manske, 1996; Derner and Whitman, 2009). Once established, blue grama-dominated communities can alter soil properties, creating conditions that resist establishment of other grass species (Dormaar and Willms, 1990; Dormaar et al., 1994). Reductions in stocking rates can reduce blue grama cover and increase the cover of cool-season midgrasses, although this recovery may take decades (Dormaar and Willms, 1990; Dormaar et al. 1994). Cover of Wyoming big sagebrush varies depending on fire frequency, with dynamics similar to the Reference State (1).

Phase 2.1: Shrub/Shortgrass Community Phase

The Shrub/Shortgrass Community Phase (2.1) occurs when site conditions decline due to long-term drought or improper grazing, and a fire has not occurred on the site for at least 30 years. In this phase, mid-statured grasses such as plains muhly and needle and thread have been largely eliminated and replaced by short-statured species, such as blue grama, prairie Junegrass, and Sandberg bluegrass. Cover of threadleaf sedge is low, vigor is poor, and plants are often heavily grazed. Blue grama resists grazing due to its low stature and extensive root system. Prairie sagewort may also increase in this phase. Cover of Wyoming big sagebrush is 5 to 15 percent.

Phase 2.2: Shortgrass Community Phase

The Shortgrass Community Phase (2.2) occurs when site conditions decline due to long-term drought or improper grazing, and a fire has occurred on the site less than 30 years prior. In this phase, mid-statured grasses such as plains muhly and needle and thread have been largely eliminated and replaced by short-statured species, such as blue grama, prairie Junegrass, and Sandberg bluegrass. Cover of threadleaf sedge is low, vigor is poor, and plants

are often heavily grazed. Blue grama resists grazing due to its low stature and extensive root system. Prairie sagewort may also increase in this phase. Wyoming big sagebrush is rare.

Community Phase Pathway 2.1a

Fire will transition the Shrub/Shortgrass Community Phase (2.1) to the Shortgrass Community Phase (2.2). Wyoming big sagebrush is killed and perennial grasses will dominate the site.

Community Phase Pathway 2.2a

It is believed that 30 years or more of natural vegetative regrowth could transition the Shortgrass Community Phase (2.2) to the Shrub/Shortgrass Community Phase (2.1). It is possible that this transition could occur over time, however, the processes are not fully understood at this time. Therefore, this pathway is considered hypothetical until further investigation can be completed.

Transition T2A

The Shortgrass State (2) transitions to the Invaded State (3) when aggressive perennial grasses, noxious weeds, and other invasive plants invade the Shortgrass State (2). Exotic plant species dominate the site in terms of cover and production. Site resilience has been substantially reduced.

Restoration Pathway R2A

Blue grama can resist displacement by other species (Dormaar and Willms, 1990; Laycock, 1991; Dormaar et al., 1994; Lacey et al., 1995). A reduction in livestock grazing pressure alone may not be sufficient to reduce the cover of blue grama in the Shortgrass State (3) (Dormaar and Willms, 1990). Intensive management treatments may be necessary (Hart et al., 1985), but practices such as mechanical treatment of grazing land and range seeding may not be possible on this site due to topography. Therefore, returning the Shortgrass State (2) to the Reference State (1) can require considerable cost, energy, and time.

State 3: Invaded State

The Invaded State (3) occurs when invasive plant species invade adjacent native grassland communities. Crested wheatgrass is a common concern, especially when native plant communities are adjacent to seeded pastures. An estimated 20 million acres of crested wheatgrass have been planted in the western U.S. (Holechek, 1981). Crested wheatgrass produces abundant seeds that can dominate the seed bank of invaded grasslands (Henderson and Naeth, 2005), although crested wheatgrass cover decreases with increasing distance from seeded areas (Heidinga and Wilson, 2002). The early growth of crested wheatgrass allows this species to take advantage of early season soil moisture, which may result in competitive exclusion of native cool-season rhizomatous wheatgrasses and bunchgrasses, such as needle and thread and prairie Junegrass (Christian and Wilson, 1999; Heidinga and Wilson, 2002; Henderson and Naeth, 2005). Reduced soil quality (Dormaar et al., 1995), reduced plant species diversity, and simplified structural complexity (Henderson and Naeth, 2005) result in a state that is substantially departed from the Reference State (1).

Other invasive species that could be a concern are annual bromes and noxious weeds. Annual bromes are generally not a significant concern in MLRA 52, however, in the Limy Steep Dry Shrubland ecological site, there could be instances where they do significantly affect the site. More information is needed to assess this condition. Noxious weeds such as leafy spurge are uncommon on this site, but they may also invade and displace native species. Although very aggressive, these species can sometimes be suppressed through intensive management (herbicide application, biological control, or intensive grazing management). Control efforts are unlikely to eliminate noxious weeds, but their density can be sufficiently suppressed so that species composition, structural complexity, and soil quality are similar to that of the Reference State (1). However, cessation of control methods will most likely result in recolonization of the site by the noxious species.

State and transition model

Limy Steep Dry Shrubland R052XY711MT

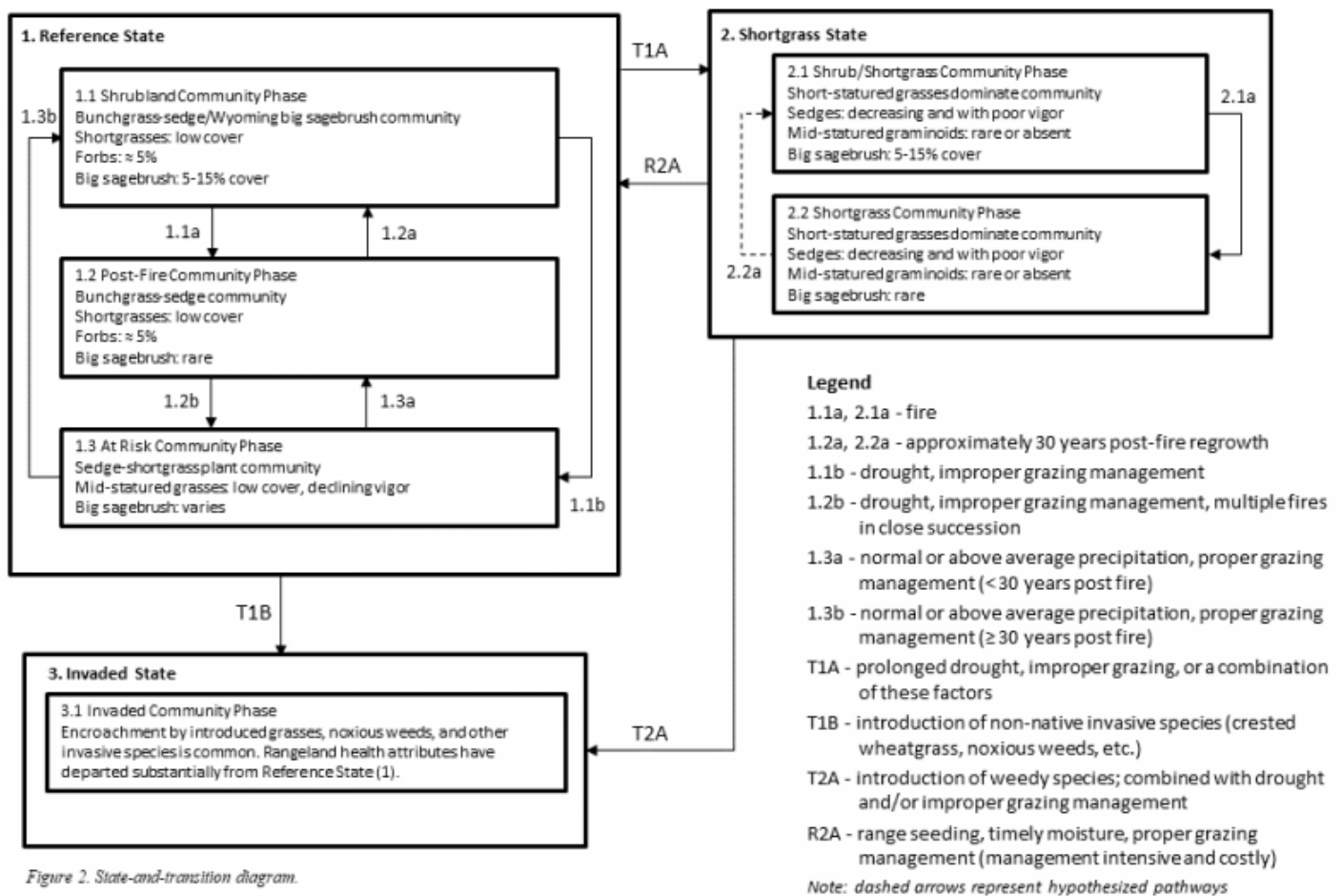


Figure 2. State-and-transition diagram.

Inventory data references

Very little field data was available for this provisional ecological site. One low intensity plot was available for species composition, shrub height, and production data. This, in combination with professional experience and data from similar ecological sites was used to approximate the reference plant community. Remaining information was obtained from a review of the scientific literature and professional experience. All community phases are considered provisional based on these plots and the sources identified in this ecological site description.

Other references

- Adams, B.W., et al. 2013. Rangeland plant communities for the dry mixedgrass natural subregion of Alberta. Second approximation. Rangeland Management Branch, Policy Division, Alberta Environment and Sustainable Resource Development, Lethbridge, Pub. No. T/040.
- Anderson, R.C. 2006. Evolution and origin of the central grassland of North America: Climate, fire, and mammalian grazers. *Journal of the Torrey Botanical Society* 133:626-647.
- Baskin, J.M., and C.C. Baskin. 1981. Ecology of germination and flowering in the weedy winter annual grass *Bromus japonicus*. *Journal of Range Management* 34:369-372.
- Biondini, M.E., and L. Manske. 1996. Grazing frequency and ecosystem processes in a northern mixed prairie, USA. *Ecological Applications* 6:239-256.
- Biondini, M.E., B.D. Patton, and P.E. Nyren. 1998. Grazing intensity and ecosystem processes in a northern mixed-grass prairie, USA. *Ecological Applications* 8:469-479.

- Bloom-Cornelius, I.V. 2011. Vegetation response to fire and domestic and native ungulate herbivory in a Wyoming big sagebrush ecosystem. M.S. thesis, Oklahoma State University. Stillwater, OK.
- Bragg, T.B. 1995. The physical environment of the Great Plains grasslands. In: A. Joern and K.H. Keeler (eds.) *The Changing Prairie*, Oxford University Press, Oxford, pp. 49-81.
- Branson, D.H., and G.A. Sword. 2010. An experimental analysis of grasshopper community responses to fire and livestock grazing in a northern mixed-grass prairie. *Environmental Entomology* 39:1441-1446.
- Bylo, L.N., N. Koper, and K.A. Molloy. 2014. Grazing intensity influences ground squirrel and American badger habitat use in mixed-grass prairies. *Rangeland Ecology and Management* 67:247-254.
- Christian, J.M., and S.D. Wilson. 1999. Long-term ecosystem impacts of an introduced grass in the Northern Great Plains. *Ecology* 80:2397-2407.
- Clarke, S.E, E.W. Tisdale, and N.A. Skoglund. 1947. The effects of climate and grazing practices on short-grass prairie vegetation in southern Alberta and southwestern Saskatchewan. Canadian Department of Agriculture Technical Bulletin No. 46.
- Cleland, D.T., et al. 1997. National hierarchical framework of ecological units. In: M.S. Boyce and A. Haney (eds.) *Ecosystem Management Applications for Sustainable Forest and Wildlife Resources*, Yale University Press, New Haven, CT.
- Cooper, S.V., C. Jean, and P. Hendricks. 2001. Biological survey of a prairie landscape in Montana's glaciated plains. Report to the Bureau of Land Management. Montana Natural Heritage Program, Helena.
- Coupland, R.T. 1950. Ecology of the mixed prairie of Canada. *Ecological Monographs* 20:271-315.
- Coupland, R.T. 1958. The effects of fluctuations in weather upon the grasslands of the Great Plains. *Botanical Review* 24:273-317.
- Coupland, R.T. 1961. A reconsideration of grassland classification in the Northern Great Plains of North America. *Journal of Ecology* 49:135-167.
- Coupland, R.T., and R.E. Johnson. 1965. Rooting characteristics of native grassland species in Saskatchewan. *Journal of Ecology* 53:475-507.
- Davis, S.K., R.J. Fisher, S.L. Skinner, T.L. Shaffer, and R.M. Brigham. 2013. Songbird abundance in native and planted grassland varies with type and amount of grassland in the surrounding landscape. *Journal of Wildlife Management* 77:908-919.
- Derner, J.D., and R.H. Hart. 2007. Grazing-induced modifications to peak standing crop in northern mixed-grass prairie. *Rangeland Ecology and Management* 60:270-276.
- Derner, J.D., and A.J. Whitman. 2009. Plant interspaces resulting from contrasting grazing management in northern mixed-grass prairie: Implications for ecosystem function. *Rangeland Ecology and Management* 62:83-88.
- Derner, J.D., W.K. Lauenroth, P. Stapp, and D.J. Augustine. 2009. Livestock as ecosystem engineers for grassland bird habitat in the western Great Plains of North America. *Rangeland Ecology and Management* 62:111-118.
- Dix, R.L. 1960. The effects of burning on the mulch structure and species composition of grasslands in western North Dakota. *Ecology* 41:49-56.
- Dormaar, J.F., and S. Smoliak. 1985. Recovery of vegetative cover and soil organic matter during revegetation of abandoned farmland in a semiarid climate. *Journal of Range Management* 38:487-491.
- Dormaar, J.F., and W.D. Willms. 1990. Effect of grazing and cultivation on some chemical properties of soils in the mixed prairie. *Journal of Range Management* 43:456-460.

- Dormaar, J.F., B.W. Adams, and W.D. Willms. 1994. Effect of grazing and abandoned cultivation on a *Stipa-Bouteloua* community. *Journal of Range Management* 47:28-32.
- Dormaar, J.F., M.A. Naeth, W.D. Willms, and D.S. Chanasyk. 1995. Effect of native prairie, crested wheatgrass (*Agropyron cristatum*) and Russian wildrye (*Elymus junceus*) on soil chemical properties. *Journal of Range Management* 48:258-263.
- Fansler, V.A., and J.M. Mangold. 2010. Restoring native plants to crested wheatgrass stands. *Restoration Ecology* 19:16-23.
- Federal Geographic Data Committee. 2008. The National Vegetation Classification Standard, Version 2. FGDC Vegetation Subcommittee. FGDC-STD-005-2008 (Version 2). pp. 126.
- Fullerton, D.S., and R.B. Colton. 1986. Stratigraphy and correlation of the glacial deposits on the Montana Plains. U.S. Geological Survey.
- Fullerton, D.S., R.B. Colton, C.A. Bush, and A.W. Straub. 2004. Map showing spatial and temporal relations of mountain and continental glaciations on the northern plains, primarily in northern Montana and northwestern North Dakota. U.S. Geologic Survey pamphlet accompanying Scientific Investigations Map 2843.
- Fullerton, D.S., R.B. Colton, and C.A. Bush. 2013. Quaternary geologic map of the Shelby 1° x 2° quadrangle, Montana: U.S. Geological Survey Open-File Report 2012-1170, scale 1:250,000.
- Haferkamp, M.R., R.K. Heitschmidt, and M.G. Karl. 1997. Influence of Japanese brome on western wheatgrass yield. *Journal of Range Management* 50:44-50.
- Harmony, K.R. 2007. Grazing and burning Japanese brome (*Bromus japonicus*) on mixed grass rangelands. *Rangeland Ecology and Management* 60:479-486.
- Hart, M., S.S. Waller, S.R. Lowry, and R.N. Gates. 1985. Disking and seeding effects on sod bound mixed prairie. *Journal of Range Management* 38:121-125.
- Heidel, B., S.V. Cooper, and C. Jean. 2000. Plant species of special concern and plant associations of Sheridan County, Montana. Report to U.S. Fish and Wildlife Service. Montana Natural Heritage Program, Helena, Montana.
- Heidinga, L., and S.D. Wilson. 2002. The impact of an invading alien grass (*Agropyron cristatum*) on species turnover in native prairie. *Diversity and Distributions* 8:249-258.
- Heitschmidt, R.K., and L.T. Vermeire. 2005. An ecological and economic risk avoidance drought management decision support system. In: J.A. Milne (ed.) *Pastoral Systems in Marginal Environments*, XXth International Grasslands Congress, July 2005, p. 178.
- Henderson, A.E., and S.K. Davis. 2014. Rangeland health assessment: A useful tool for linking range management and grassland bird conservation? *Rangeland Ecology and Management* 67:88-98.
- Henderson, D.C., and M.A. Naeth. 2005. Multi-scale impacts of crested wheatgrass invasion in mixed-grass prairie. *Biological Invasions* 7:639-650.
- Herrick, J.E., J.W. Van Zee, K.M. Havstad, L.M. Burkett, and W.G. Whitford. 2009. Monitoring manual for grassland, shrubland and savanna ecosystems. U.S. Department of Agriculture, Agricultural Research Service, Jornada Experimental Range, Las Cruces, NM.
- Higgins, K.F. 1986. Interpretation and compendium of historical fire accounts in the Northern Great Plains. U.S. Fish and Wildlife Service Resource Publication 161.
- Holechek, J.L. 1981. Crested wheatgrass. *Rangelands* 3:151-153.

- Howard, J. L. 1999. *Artemisia tridentata* subsp. *wyomingensis*. In: Fire Effects Information System, U.S. Department of Agriculture, Forest Service <http://www.fs.fed.us/database/feis/plants/shrub/arttriw/all.html> accessed (8/11/2016).
- Joern, A. 2005. Disturbance by fire frequency and bison grazing modulate grasshopper assemblages in tallgrass prairie. *Ecology* 86:861-873.
- Knopf, F.L. 1996. Prairie legacies—birds. In: F.B. Samson and F.L. Knopf (eds.) *Prairie Conservation: Preserving North America's Most Endangered Ecosystem*, Island Press, Washington, DC, pp. 135-148.
- Knopf, F.L., and F.B. Samson. 1997. Conservation of grassland vertebrates. In: F.B. Samson and F.L. Knopf (eds.) *Ecology and Conservation of Great Plains Vertebrates: Ecological Studies 125*, Springer-Verlag, New York, NY, pp. 273-289.
- Krzic, M., K. Broersma, D.J. Thompson, and A.A. Bomke. 2000. Soil properties and species diversity of grazed crested wheatgrass and native rangelands. *Journal of Range Management* 53:353-358.
- Lacey, J., R. Carlstrom, and K. Williams. 1995. Chiseling rangeland in Montana. *Rangelands* 17:164-166.
- Lauenroth, W.K., O.E. Sala, D.P. Coffin, and T.B. Kirchner. 1994. The importance of soil water in recruitment of *Bouteloua gracilis* in the shortgrass steppe. *Ecological Applications* 4:741-749.
- Laycock, W.A. 1988. History of grassland plowing and grass planting on the Great Plains. In: J.E. Mitchell (ed.) *Impacts of the Conservation Reserve Program in the Great Plains—Symposium Proceedings, September 16-18, 1987*. USDA Forest Service, Rocky Mountain Forest and Range Experiment Station, General Technical Report RM-158.
- Laycock, W.A. 1991. Stable states and thresholds of range condition on North American rangelands. *Journal of Range Management* 44:427-433.
- Lesica, P., and T.H. DeLuca. 1996. Long-term harmful effects of crested wheatgrass on Great Plains grassland ecosystems. *Journal of Soil and Water Conservation* 51:408-409.
- Lockwood, J.A. 2004. *Locust: The devastating rise and mysterious disappearance of the insect that shaped the American frontier*. Basic Books, New York, NY.
- Looman, J., and D.H. Heinrichs. 1973. Stability of crested wheatgrass pastures under long-term pasture use. *Canadian Journal of Plant Science* 53:501-506.
- Madden, E.M., R.K. Murphy, A.J. Hansen, and L. Murray. 2000. Models for guiding management of prairie bird habitat in northwestern North Dakota. *American Midland Naturalist* 144:377-392.
- McNab, W.H., et al. 2007. Description of ecological subregions: Sections of the conterminous United States [CD-ROM]. USDA Forest Service, General Technical Report WO-76B.
- Miller, J.J., and J.A. Brierley. 2011. Solonchetsic soils of Canada: Genesis, distribution, and classification. *Canadian Journal of Soil Science* 91:889-902.
- Montana State College. 1949. Similar vegetative rangeland types in Montana. Montana State College, Agricultural Experiment Station.
- Mushet, D.M., N.H. Euliss, Jr., and C.A. Stockwell. 2012. A conceptual model to facilitate amphibian conservation in the Northern Great Plains. *Great Plains Research* 22:45-58.
- Nesser, J.A., G.L. Ford, C.L. Maynard, and D.S. Page-Dumroese. 1997. Ecological units of the Northern Region: Subsections. USDA Forest Service, Intermountain Research Station, General Technical Report INT-GTR-369.
- Oard, M.J. 1993. A method of predicting chinook winds east of the Montana Rockies. *Weather and Forecasting* 8:166-180.

- Ogle, S.M., W.A. Reiners, and K.G. Gerow. 2003. Impacts of exotic annual brome grasses (*Bromus* spp.) on ecosystem properties of the northern mixed grass prairie. *American Midland Naturalist* 149:46-58.
- Roath, L.R. 1988. Implications of land conversions and management for the future. In: J.E. Mitchell (ed.) *Impacts of the Conservation Reserve Program in the Great Plains—Symposium Proceedings, September 16-18, 1987*. USDA Forest Service, Rocky Mountain Forest and Range Experiment Station, General Technical Report RM-158.
- Rogler, G.A., and R.J. Lorenz. 1983. Crested wheatgrass: Early history in the United States. *Journal of Range Management* 36:91-93.
- Romo, J.T. 2011. Clubmoss, precipitation, and microsite effects on emergence of graminoid and forb seedlings in the semiarid northern mixed prairie of North America. *Journal of Arid Environments* 75:98-105.
- Rowe, J.S. 1969. Lightning fires in Saskatchewan grassland. *Canadian Field Naturalist* 83:317-327.
- Salo, E.D., et al. 2004. Grazing intensity effects on vegetation, livestock and non-game birds in North Dakota mixed-grass prairie. *Proceedings of the 19th North American Prairie Conference, Madison, Wisconsin*.
- Samuel, M.J., and R.H. Hart. 1994. Sixty-one years of secondary succession on rangelands of the Wyoming High Plains. *Journal of Range Management* 47:184-191.
- Semlitsch, R.D. 2000. Principles for management of aquatic-breeding amphibians. *Journal of Wildlife Management* 64:615-631.
- Shay, J., D. Kunec, and B. Dyck. 2001. Short-term effects of fire frequency on vegetation composition and biomass in mixed prairie in south-western Manitoba. *Plant Ecology* 155:157-167.
- Smith, B., and G.J. McDermid. 2014. Examination of fire-related succession within the dry mixed-grass subregion of Alberta with the use of MODIS and Landsat. *Rangeland Ecology and Management* 67:307-317.
- Smith, R.E. 2013. Conserving Montana's sagebrush highway: Long distance migration in sage-grouse. M.S. thesis, University of Montana, Missoula.
- Smoliak, S. 1974. Range vegetation and sheep production at three stocking rates on *Stipa-Bouteloua* prairie. *Journal of Range Management* 27:23-26.
- Smoliak, S., and J.F. Dormaar. 1985. Productivity of Russian wildrye and crested wheatgrass and their effect on prairie soils. *Journal of Range Management* 38:403-405.
- Smoliak, S., J.F. Dormaar, and A. Johnston. 1972. Long-term grazing effects on *Stipa-Bouteloua* prairie soils. *Journal of Range Management* 25:246-250.
- Soil Survey Staff. 2014. *Keys to soil taxonomy*, 12th edition. USDA Natural Resources Conservation Service.
- Soller, D.R. 2001. Map showing the thickness and character of Quaternary sediments in the glaciated United States east of the Rocky Mountains. U.S. Geological Survey Miscellaneous Investigations Series I-1970-E, scale 1:3,500,000.
- Stephens, S.E., J.J. Rotella, M.S. Lindberg, M.L. Taper, and J.K. Ringelman. 2005. Duck nest survival in the Missouri Coteau of North Dakota: Landscape effects at multiple spatial scales. *Ecological Applications* 15:2137-2149.
- Umbanhowar, Jr., C.E. 2004. Interactions of climate and fire at two sites in the Northern Great Plains. *Palaeogeography, Palaeoclimatology, and Palaeoecology* 208:141-152.
- USDA-NRCS. Glossary of Landform and Geologic Terms. In: *National soil survey handbook*, title 430-VI. Part 629.02c http://www.nrcs.usda.gov/wps/portal/nrcs/detail/soils/ref/?cid=nrcs142p2_054242 accessed (4/13/2016).

U.S. Fish and Wildlife Service. 2013. Greater sage-grouse (*Centrocercus urophasianus*) conservation objectives: Final report.

Van Dyne, G.M., and W.G. Vogel. 1967. Relation of *Selaginella densa* to site, grazing, and climate. *Ecology* 48:438-444.

Vaness, B.M., and S.D. Wilson. 2007. Impact and management of crested wheatgrass (*Agropyron cristatum*) in the northern Great Plains. *Canadian Journal of Plant Science* 87:1023-1028.

Vermeire, L.T., J.L. Crowder, and D.B. Wester 2011. Plant community and soil environment response to summer fire in the northern Great Plains. *Rangeland Ecology and Management* 64:37-46.

Vermeire, L.T., J.L. Crowder, and D.B. Wester 2014. Semiarid rangeland is resilient to summer fire and postfire grazing utilization. *Rangeland Ecology and Management* 67:52-60.

Vuke, S.M., K.W. Porter, J.D. Lonn, and D.A. Lopez. 2007. Geologic map of Montana - information booklet: Montana Bureau of Mines and Geology Geologic Map 62-D.

Wambolt, C.L., K.S. Walhof, and M.R. Frisina. 2001. Recovery of big sagebrush communities after burning in southwestern Montana. *Journal of Environmental Management* 61:243-252

Watts, M.J. and C.L. Wambolt. 1996. Long-term recovery of Wyoming big sagebrush after four treatments. *Journal of Environmental Management* 46:95-102

Whisenant, S.G. 1990. Postfire population dynamics of *Bromus japonicus*. *American Midland Naturalist* 123:301-308.

Wilson, S.D., and J.M. Shay. 1990. Competition, fire, and nutrients in a mixed-grass prairie. *Ecology* 71:1959-1967.

With, K.A. 2010. McCown's longspur (*Rhynchophanes mccownii*). In: A. Poole (ed.) *The Birds of North America* (online), Cornell Lab of Ornithology, Ithaca. <http://bna.birds.cornell.edu/bna/species/09>

Contributors

Scott Brady
Stuart Veith

Approval

Scott Brady, 7/03/2019

Acknowledgments

This provisional ecological site description could not have been completed without the contributions of Karen Newlon. She conducted an extensive literature review, which provided most of the background information for this project as well as many of the references. She also co-authored the Loamy and Thin Claypan Dry Grassland ecological sites previously prepared in MLRA 52.

A number of USDA-NRCS and USDI-BLM staff supported this project. Staff contributions are as follows:

Soil Concepts, Soils Information, and Field Descriptions
Charlie French, USDA-NRCS
Josh Sorlie, USDI-BLM

NASIS Reports, Data Dumps, and Soil Sorts
Bill Drummond, USDA-NRCS
Pete Weikle, USDA-NRCS

Peer Review and Beta Testing
Kirt Walstad, USDA-NRCS
Kyle Steele, formerly USDA-NRCS
Kelsey Molloy, USDA-NRCS
Rick Caquelin, USDA-NRCS
Josh Sorlie, USDI-BLM
BJ Rhodes, USDI-BLM

Editing
Ann Kinney, USDA-NRCS
Jenny Sutherland, USDA-NRCS

Quality Control
Kirt Walstad, USDA-NRCS

Quality Assurance
Stacey Clark, USDA-NRCS

Rangeland health reference sheet

Interpreting Indicators of Rangeland Health is a qualitative assessment protocol used to determine ecosystem condition based on benchmark characteristics described in the Reference Sheet. A suite of 17 (or more) indicators are typically considered in an assessment. The ecological site(s) representative of an assessment location must be known prior to applying the protocol and must be verified based on soils and climate. Current plant community cannot be used to identify the ecological site.

Author(s)/participant(s)	
Contact for lead author	
Date	
Approved by	
Approval date	
Composition (Indicators 10 and 12) based on	Annual Production

Indicators

1. **Number and extent of rills:**

2. **Presence of water flow patterns:**

3. **Number and height of erosional pedestals or terracettes:**

4. **Bare ground from Ecological Site Description or other studies (rock, litter, lichen, moss, plant canopy are not bare ground):**

5. **Number of gullies and erosion associated with gullies:**

-
6. **Extent of wind scoured, blowouts and/or depositional areas:**
-
7. **Amount of litter movement (describe size and distance expected to travel):**
-
8. **Soil surface (top few mm) resistance to erosion (stability values are averages - most sites will show a range of values):**
-
9. **Soil surface structure and SOM content (include type of structure and A-horizon color and thickness):**
-
10. **Effect of community phase composition (relative proportion of different functional groups) and spatial distribution on infiltration and runoff:**
-
11. **Presence and thickness of compaction layer (usually none; describe soil profile features which may be mistaken for compaction on this site):**
-
12. **Functional/Structural Groups (list in order of descending dominance by above-ground annual-production or live foliar cover using symbols: >>, >, = to indicate much greater than, greater than, and equal to):**
- Dominant:
- Sub-dominant:
- Other:
- Additional:
-
13. **Amount of plant mortality and decadence (include which functional groups are expected to show mortality or decadence):**
-
14. **Average percent litter cover (%) and depth (in):**
-
15. **Expected annual annual-production (this is TOTAL above-ground annual-production, not just forage annual-production):**
-
16. **Potential invasive (including noxious) species (native and non-native). List species which BOTH characterize degraded states and have the potential to become a dominant or co-dominant species on the ecological site if their future establishment and growth is not actively controlled by management interventions. Species that become dominant for only one to several years (e.g., short-term response to drought or wildfire) are not**

invasive plants. Note that unlike other indicators, we are describing what is NOT expected in the reference state for the ecological site:

17. **Perennial plant reproductive capability:**
