

## Ecological site FX052X03X094 Loamy Sodic (Losd) Dry Shrubland

Last updated: 12/28/2022  
Accessed: 05/03/2024

---

### General information

**Provisional.** A provisional ecological site description has undergone quality control and quality assurance review. It contains a working state and transition model and enough information to identify the ecological site.

### MLRA notes

Major Land Resource Area (MLRA): 052X–Brown Glaciated Plains

The Brown Glaciated Plains, MLRA 52, is an expansive, agriculturally and ecologically significant area. It consists of approximately 14.5 million acres and stretches across 350 miles from east to west, encompassing portions of 15 counties in north-central Montana. This region represents the southwestern limit of the Laurentide Ice Sheet and is considered to be the driest and westernmost area within the vast network of glacially derived prairie pothole landforms of the northern Great Plains. Elevation ranges from 2,000 feet (610 meters) to 4,600 feet (1,400 meters).

Soils are primarily Mollisols, but Entisols, Inceptisols, Alfisols, and Vertisols are also common. Till from continental glaciation is the predominant parent material, but alluvium and bedrock are also common. Till deposits are typically less than 50 feet thick, and in some areas glacially deformed bedrock occurs at or near the soil surface (Soller, 2001). Underlying sedimentary bedrock largely consisting of Cretaceous shale, sandstone, and mudstone (Vuke et al., 2007) is commonly exposed on hillslopes, particularly along drainageways. Significant alluvial deposits occur along glacial outwash channels and major drainages, including portions of the Missouri, Teton, Marias, Milk, and Frenchman Rivers. Large glacial lakes, particularly in the western half of the MLRA, deposited clayey and silty lacustrine sediments (Fullerton et al., 2013).

Much of the western portion of this MLRA was glaciated towards the end of the Wisconsin age, with the maximum glacial extent occurring approximately 20,000 years ago (Fullerton et al., 2004). The result is a geologically young landscape that is predominantly a level till plain interspersed with lake plains and dominated by soils in the Mollisol and Vertisol orders. These soils are very productive and generally are well suited to dryland farming. Much of this area is aridic-ustic. Crop-fallow dryland wheat farming is the predominant land use. Areas of rangeland typically are on steep hillslopes along drainages.

The rangeland, much of which is native mixedgrass prairie, increases in abundance in the eastern half of the MLRA. The Wisconsin-age till in the north-central part of this area typically formed large disintegration moraines with steep slopes and numerous poorly drained potholes. A large portion of Wisconsin-age till occurring on level terrain that would typically be optimal for farming has large amounts of less-suitable sodium-affected Natrustalfs. Significant portions of Blaine, Phillips, and Valley Counties were glaciated approximately 150,000 years ago during the Illinoian age. Due to erosion and dissection of the landscape, many of these areas have steeper slopes and more exposed bedrock than areas glaciated during the Wisconsin age (Fullerton and Colton, 1986).

While much of the rangeland in the aridic-ustic portion of MLRA 52 is classified as belonging to the “dry grassland” climatic zone, sites in portions of southern MLRA 52 may belong to the “dry shrubland” climatic zone. The dry shrubland zone represents the northernmost extent of the big sagebrush (*Artemisia tridentata*) steppe on the Great Plains. Because similar soils occur in both southern and northern portions of the MLRA, it is currently hypothesized that climate is the primary driving factor affecting big sagebrush distribution in this area. However, the precise factors are not yet fully understood.

Sizeable tracts of largely unbroken rangeland in the eastern half of the MLRA and adjacent southern Saskatchewan

are home to the northern Montana population of greater sage grouse (*Centrocercus urophasianus*), and large portions of this area are considered to be a Priority Area for Conservation (PAC) by the U.S. Fish and Wildlife Service (U.S. Fish and Wildlife Service, 2013). This population is unique among sage grouse populations in the fact that many individuals overwinter in the big sagebrush steppe (dry shrubland) in the southern portion of the MLRA and then migrate to the northern portion of the MLRA, which lacks big sagebrush (dry grassland), to live the rest of the year (Smith, 2013).

Areas of the till plain near the Bearpaw and Highwood Mountains as well as the Sweetgrass Hills and Rocky Mountain foothills are at higher elevations, receive higher amounts of precipitation, and have a typical-ustic moisture regime. These areas have significantly more rangeland production than the drier aridic-ustic portions of the MLRA and have enough moisture to produce crops annually rather than just bi-annually, as in the drier areas. Ecological sites in this higher precipitation area are classified as the moist grassland climatic zone.

## **Classification relationships**

NRCS Soil Geography Hierarchy

- Land Resource Region: Northern Great Plains
- Major Land Resource Area (MLRA): 052 Brown Glaciated Plains
- Climate Zone: Dry Shrubland

National Hierarchical Framework of Ecological Units (Cleland et al., 1997; McNab et al., 2007)

- Domain: Dry
- Division: Temperate Steppe
- Province: Great Plains-Palouse Dry Steppe Province 331
- Section: Northwestern Glaciated Plains 331D
- Subsection: Montana Glaciated Plains 331Dh
- Landtype Association/Landtype Phase: N/A

National Vegetation Classification Standard (Federal Geographic Data Committee, 2008)

- Class: Xeromorphic Woodland, Scrub and Herb Vegetation Class (3)
- Subclass: Cool Semi-Desert Scrub and Grassland Subclass (3.B)
- Formation: Cool Semi-Desert Scrub and Grassland Formation (3.B.1)
- Division: Cool Semi-Desert Scrub and Grassland Division (3.B.1.Ne)
- Macrogroup: *Artemisia tridentata* - *Artemisia tripartita* ssp. *tripartita* - *Purshia tridentata* Steppe and Shrubland Macrogroup (3.B.1.Ne.3)
- Group: *Artemisia tridentata* ssp. *wyomingensis* - *Artemisia tridentata* ssp. *tridentata* Steppe and Shrubland Group (3.B.1.Ne.3.a)
- Alliance: *Artemisia tridentata* ssp. *wyomingensis* Dry Steppe and Shrubland Alliance
- Association: No existing correlation

EPA Ecoregions

- Level 1: Great Plains (9)
- Level 2: West-Central Semi-Arid Prairies (9.3)
- Level 3: Northwestern Glaciated Plains (42)
- Level 4: North-Central Brown Glaciated Plains (42o) and Glaciated Northern Grasslands (42j)

## **Ecological site concept**

This provisional ecological site occurs in the Dry Shrubland climatic zone of MLRA 52. Figure 1 illustrates the distribution of this ecological site based on current data. This map is approximate, is not intended to be definitive, and may be subject to change. Loamy Sodic Dry Shrubland ecological site is an ecological site of limited extent, approximately 61,000 acres, occurring on alluvial landscapes throughout MLRA 52. It occurs on alluvial fans, drainageways, and terraces where salts have accumulated.

The distinguishing characteristic of this site is that soils contain less than 35 percent clay in the upper 4 inches and that saline, sodic, or saline-sodic conditions are evident in the upper 20 inches of soil. Soils for this ecological site are typically very deep (more than 60 inches) and derived from fine-loamy alluvium or outwash deposits. Soil textures in the upper 4 inches are typically loam, clay loam, silt loam, or silty clay loam. Soils typically have an

ochric epipedon. Characteristic vegetation is western wheatgrass (*Pascopyrum smithii*), inland saltgrass (*Distichlis spicata*), and Wyoming big sagebrush (*Artemisia tridentata* subsp. *Wyomingensis*).

### Associated sites

FX052X03X012	<b>Dense Clay Sodic (Dcsd) Dry Shrubland</b> This site occupies similar landscapes and slope positions as the Loamy Sodic Dry Shrubland ecological site, but occurs in areas where clay content is greater than 35 percent.
FX052X03X032	<b>Loamy (Lo) Dry Shrubland</b> This site is on similar landscapes, but on higher slope positions than Loamy Sodic Dry Grassland ecological site. It occurs in areas where salts and lime have not accumulated.
FX052X03X030	<b>Limy (Ly) Dry Shrubland</b> This site is on similar landscapes, but on higher slope positions than the Loamy Sodic Dry Shrubland ecological site. It occurs in areas where lime has accumulated rather than salts.

### Similar sites

FX052X01X094	<b>Loamy Sodic (Losd) Dry Grassland</b> This site differs from the Loamy Sodic Dry Shrubland ecological site in that it has slightly cooler annual temperatures and supports silver sagebrush rather than big sagebrush.
FX052X03X012	<b>Dense Clay Sodic (Dcsd) Dry Shrubland</b> This site differs from the Loamy Sodic Dry Shrubland ecological site in that soils contain more than 35 percent clay in the upper 4 inches.
FX052X99X091	<b>Saline Overflow (Sov)</b> This site differs from the Loamy Sodic Dry Shrubland ecological site in that it occurs on higher order stream reaches and receives enough additional moisture to significantly increase production; whereas, the Dense Clay Sodic Dry Shrubland ecological site occurs in uplands or ephemeral drainageways and does not receive additional moisture to increase production.
FX052X03X032	<b>Loamy (Lo) Dry Shrubland</b> This site differs from the Loamy Sodic Dry Shrubland ecological site in that soils do not exhibit saline, sodic, or saline-sodic conditions in the upper 20 inches of the profile. This is evidenced by the lack of sodium-tolerant plants, such as Inland saltgrass.

Table 1. Dominant plant species

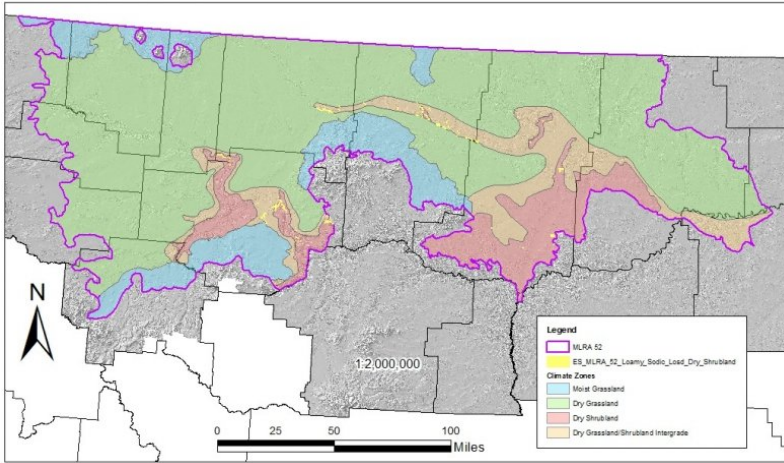
Tree	Not specified
Shrub	Not specified
Herbaceous	Not specified

### Legacy ID

R052XY713MT

### Physiographic features

Loamy Sodic Dry Shrubland is an ecological site of limited extent occurring on alluvial fans, drainageways, and terraces.



**Figure 1. Figure 1. General distribution of the Loamy Sodic Dry Shrubland ecological site by map unit extent.**

**Table 2. Representative physiographic features**

Landforms	(1) Terrace (2) Alluvial fan (3) Drainageway
Elevation	610–1,180 m
Slope	0–14%
Aspect	Aspect is not a significant factor

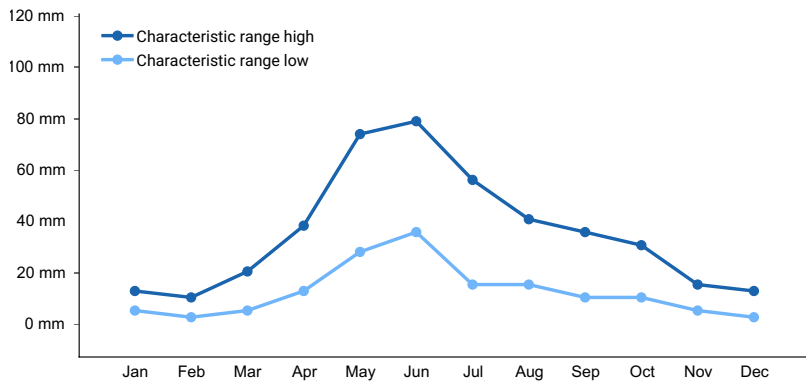
### Climatic features

The Brown Glaciated Plains is a semi-arid region with a temperate continental climate that is characterized by frigid winters and warm to hot summers (Cooper et al., 2001). The average frost-free period for this ecological site is 125 days. The majority of precipitation occurs as steady, soaking, frontal system rains in late spring to early summer. Summer rainfall comes mainly from convection thunderstorms that typically deliver scattered amounts of rain in intense bursts. These storms may be accompanied by damaging winds and large-diameter hail and result in flash flooding along low-order streams. Severe drought occurs on average in 2 out of 10 years. Annual precipitation ranges from 10 to 14 inches, and 70 to 80 percent of this occurs during the growing season (Cooper et al., 2001). Extreme climatic variations, especially droughts, have the greatest influence on species cover and production (Coupland, 1958, 1961; Biondini et al., 1998).

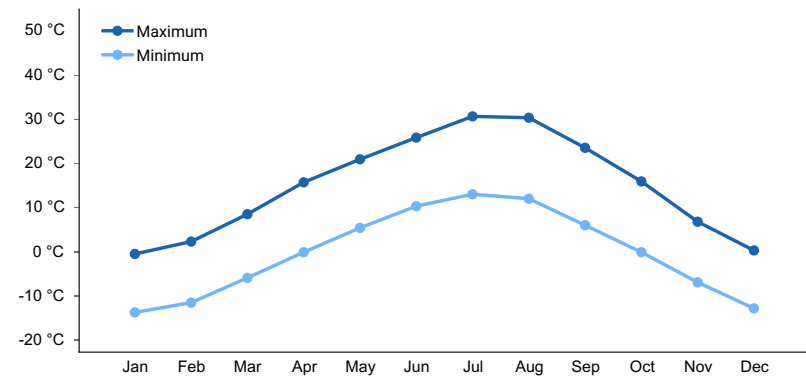
During the winter months, the western half of MLRA 52 commonly experiences chinook winds, which are strong west to southwest surface winds accompanied by abrupt increases in temperature. The chinook winds are strongest on the western boundary of the MLRA near the Rocky Mountain foothills and decrease eastward. In addition to producing damaging winds, prolonged chinook episodes can result in drought or vegetation kills due to a reaction of plants to a “false spring” (Oard, 1993).

**Table 3. Representative climatic features**

Frost-free period (average)	125 days
Freeze-free period (average)	145 days
Precipitation total (average)	330 mm



**Figure 2. Monthly precipitation range**



**Figure 3. Monthly average minimum and maximum temperature**

## Climate stations used

- (1) CONTENT 3 SSE [USC00241984], Zortman, MT
- (2) FT BENTON [USC00243113], Fort Benton, MT
- (3) FT PECK PWR PLT [USC00243176], Fort Peck, MT
- (4) LOMA 1 WNW [USC00245153], Loma, MT
- (5) MALTA 7 E [USC00245338], Malta, MT
- (6) MALTA 35 S [USC00245340], Zortman, MT

## Influencing water features

This is a semi-arid upland ecological site and the water budget is normally contained within the soil pedon. During intense precipitation events, precipitation rates frequently exceed infiltration rates and this site delivers moisture to downslope sites via surface runoff. Moisture loss through evapotranspiration exceeds precipitation for the majority of the growing season. Soil moisture levels are greatest in May and June, but rarely reach field capacity in the upper 40 inches.

## Soil features

The soil series that best represents the central concept for this ecological site is the Benz soil. The Loamy Sodic concept covers about 61,000 acres in MLRA 52. The Benz soil is in the Ustorthents great group. The particle-size family is fine-loamy, meaning that the soils contain between 18 and 35 percent clay in the particle-size control section. The mineralogy is mixed and the typical parent material for this series is alluvium. These and all soils in this concept are characterized by an accumulation of salts in the upper 20 inches and a surface horizon that lacks enough organic matter to have a mollic epipedon. The soil moisture regime for all soils in this ecological site concept is ustic bordering on aridic, which means that the soils are moist in some or all parts for either 180 cumulative days or 90 consecutive days during the growing season, and dry in some or all parts for over 90 cumulative days. These soils have a frigid soil temperature regime (Soil Survey Staff, 2014).

Surface horizon textures found in this site are commonly loam, clay loam, silt loam, or silty clay loam. The upper 4 inches of soil contains less than 35 percent clay. The underlying horizons are typically comprised of stratified

alluvial deposits. They are characterized by many thin layers of sediment deposited by past flood events. Subsurface horizon textures are clay loam, silt loam, or silty clay loam. Organic matter in the surface horizon typically ranges from 0.5 to 2 percent organic matter, and moist colors vary from light olive brown (2.5Y 5/3) to very dark grayish brown (2.5Y 3/2). Calcium carbonate equivalent is typically less than 15 percent throughout the soil profile. The upper 20 inches of soil contain accumulated salts, as evidenced by an electrical conductivity of 4 or more, a sodium adsorption ratio of 13 or more, or both. Soil pH classes are slightly to strongly alkaline in the surface horizon and moderately to strongly alkaline in the subsurface horizons. The soil depth class for this site is typically very deep (greater than 60 inches). Coarse fragments are typically rare or absent in the upper 20 inches of soil.

**Table 4. Representative soil features**

Parent material	(1) Alluvium
Surface texture	(1) Loam (2) Clay loam (3) Silt loam (4) Silty clay loam
Drainage class	Well drained
Soil depth	152–183 cm
Available water capacity (0-101.6cm)	11.43–12.7 cm
Calcium carbonate equivalent (0-12.7cm)	0–14%
Electrical conductivity (0-50.8cm)	4–16 mmhos/cm
Sodium adsorption ratio (0-50.8cm)	13–40
Soil reaction (1:1 water) (0-101.6cm)	7.4–9
Subsurface fragment volume <=3" (0-50.8cm)	0–14%
Subsurface fragment volume >3" (0-50.8cm)	0–14%

## Ecological dynamics

The information in this ecological site description, including the state-and-transition model (STM) (Figure 2), was developed based on historical data, current field data, professional experience, and a review of the scientific literature. As a result, all possible scenarios or plant species may not be included. Key indicator plant species, disturbances, and ecological processes are described to inform land management decisions.

The Loamy Sodic Dry Shrubland ecological site in MLRA 52 consists of five states: the Reference State (1), the Shortgrass State (2), the Invaded State (3), the Cropland State (4), and the Post-Cropland State (5). Plant communities associated with the Loamy Sodic Dry Shrubland ecological site evolved under the combined influences of climate, grazing, and fire. Extreme climatic variability results in frequent droughts, which can have the greatest influence on the relative contribution of species cover and production (Coupland, 1958, 1961; Biondini et al., 1998). Due to the dominance of cool-season graminoids, annual production is highly dependent upon mid- to late-spring precipitation (Heitschmidt and Vermeire, 2005; Anderson, 2006).

Native grazers also shaped these plant communities. American bison (*Bison bison*) were the dominant historic grazer, but pronghorn (*Antilocapra americana*), elk (*Cervus canadensis*), and deer (*Odocoileus* spp.) were also common. Small mammals such as prairie dogs (*Cynomys* spp.) and ground squirrels (*Urocitellus* spp.) also influenced this plant community (Salo et al., 2004). Grasshoppers and periodic outbreaks of Rocky Mountain locusts (*Melanoplus spretus*) also played an important role in the ecology of these communities (Lockwood, 2004).

Fire is a critical dynamic on the Loamy Sodic Dry Shrubland ecological site. The historic ecosystem experienced periodic lightning-caused fires. Historically, Native Americans also set periodic fires. The majority of lightning-caused fires occurred in July and August; whereas, Native Americans typically set fires during spring and fall to correspond with the movement of bison (Higgins, 1986). It is difficult to precisely determine the fire return interval in the Dry Shrubland climate zone, but estimates range from 6 to 25 years (Bragg, 1995) to 10 to 70 years (Howard, 1999). It is believed that the frequency and intensity of fire would be less on this ecological site than on adjacent sites due to the sparse vegetative cover. Generally, the herbaceous vegetation is resilient to fire and the primary effects of fire are reduction of litter and short-term fluctuations in production (Vermeire et al., 2011, 2014). However, studies have shown that very short fire return intervals (less than 5 years) can have a negative effect, shifting species composition toward warm-season, short-statured grasses (Shay et al., 2001; Smith and McDermid, 2014). Conversely, fire has a significant effect on Wyoming big sagebrush cover. Wyoming big sagebrush is a non-sprouting shrub and is most often killed by fire (Howard, 1999). Often, it may take 30 years or more for a stand to recover following fire (Watts and Wambolt, 1996; Wambolt et al., 2001). It is likely that fire return intervals shorter than 30 years will result in a reduction in Wyoming big sagebrush cover over the long term. Long-term fire suppression in the 20th century removed periodic fire from the ecosystem altogether. Very little is known how this has affected the Dry Shrubland ecosystem. Some studies suggest an increase in Wyoming big sagebrush cover, presumably due to fire suppression (Bloom-Cornelius, 2011). Increased decadence in Wyoming big sagebrush may also occur (Howard, 1999), but these results are inconclusive.

Lack of periodic fires can also result in an increase in litter accumulation and, in some cases, provide ideal conditions for seed germination and seedling establishment of non-native annual brome species, such as field or Japanese brome (*Bromus arvensis*) (Whisenant, 1990). These species have become naturalized in relatively undisturbed grasslands (Ogle et al., 2003; Harmon, 2007) and can be present in any state within the scope of this ecological site. They typically do not have a significant ecological impact; however, their presence can reduce the production of cool-season perennial grasses in some cases (Haferkamp et al., 1997). Their abundance varies depending on precipitation and germination conditions. The fire-recovery cycle is a critical element in managing the Dry Shrubland ecosystem. Further study is needed in this area to determine a balanced and sustainable fire cycle.

Improper grazing of this site can result in a reduction in the cover of the mid-statured, cool-season rhizomatous wheatgrasses and an increase in shortgrasses (Smoliak et al., 1972; Smoliak, 1974). Improper grazing practices include any practices that do not allow sufficient opportunity for plants to physiologically recover from a grazing event or multiple grazing events within a given year, and that do not provide adequate cover to prevent soil erosion over time. These practices may include, but are not limited to, overstocking, continuous grazing, and inadequate seasonal rotation moves over multiple years. Periods of extended drought (approximately 3 years or more) can reduce mid-statured, rhizomatous wheatgrasses, triggering an increase in shortgrasses such as Sandberg bluegrass (*Poa secunda*) (Coupland, 1961; Clarke et al., 1947).

Further degradation of the site due to improper grazing can result in a community dominated by shortgrasses such as Sandberg bluegrass. Cover and vigor of mid-statured rhizomatous grasses are severely reduced. Unpalatable forbs such as curlycup gumweed (*Grindelia squarrosa*) are common. An invaded state occurs when non-native species invade the site, but invasive species dynamics are not well understood on this ecological site. Possible invasive species on this site are annual bromes, smooth brome (*Bromus inermis*), and crested wheatgrass (*Agropyron cristatum*). Crested wheatgrass, in particular, is a highly drought tolerant and competitive cool-season perennial bunchgrass (DeLuca and Lesica, 1996). It can invade relatively undisturbed grasslands, reducing cover and production of native cool-season midgrasses (Heidinga and Wilson, 2002; Henderson and Naeth, 2005). Further investigation is needed to fully document invasive species dynamics, ecological pathways, and processes.

The Loamy Sodic Dry Shrubland ecological site is not well suited to cropland. Regardless, many acres have been converted to cropland. Cereal grains such as wheat and barley are the most common crops. When taken out of production, the site is either allowed to revert back to a perennial grassland or is seeded with perennial forage species. Sites left to undergo natural plant succession after cultivation can, over several decades, support cool-season rhizomatous wheatgrasses, although cover and production of these species are lower than in the Reference State (1). Those sites seeded with non-native species may persist with this cover type indefinitely, particularly if salt-tolerant species such as RS wheatgrass (*Elymus hoffmannii*), also known as hybrid wheatgrass, are used. When reseeded to native species, it may take over 75 years for the soil on productive sites to return to the pre-disturbed state (Dormaar and Willms, 1990). The Loamy Sodic Dry Shrubland ecological site may take longer due to the difficult growing conditions, but further investigation is needed to better evaluate this.

The state-and-transition model (STM) (Figure 2) suggests possible pathways that plant communities on this site may follow as a result of a given set of ecological processes and management. The site may also support states not displayed in the STM (Figure 2). Landowners and land managers should seek guidance from local professionals before prescribing a particular management or treatment scenario. Plant community responses vary across this MLRA due to variability in weather, soils, and aspect. The Reference State (1) may not necessarily be the management goal. The lists of plant species and species composition values are provisional and are not intended to cover the full range of conditions, species, and responses for the site. Species composition by dry weight is provided when available and is considered provisional based on the sources identified in the narratives associated with each community phase.

#### State 1: Reference State

The Reference State (1) contains three community phases characterized by mid-statured, rhizomatous wheatgrasses, sodium-tolerant rhizomatous grasses, sodium-tolerant bunchgrasses, and Wyoming big sagebrush, a perennial, evergreen, non-sprouting shrub. Both western wheatgrass and thickspike wheatgrass (*Elymus lanceolatus*) can occur on this site, but western wheatgrass tends to be predominant (Coupland 1961; Cooper et al., 2001; Heidel et al., 2000). This state evolved under the combined influences of climate, grazing, and fire with climatic variation having the greatest influence on cover and production. In general, this state was resilient to grazing, although heavy grazing could influence species composition in localized areas.

#### Phase 1.1: Shrubland Community Phase

The Shrubland Community Phase (1.1) is dominated by western wheatgrass, inland saltgrass, and Wyoming big sagebrush. Sodium tolerant bunchgrasses such as alkali sacaton (*Sporobolus airoides*) and Nuttall's alkaligrass (*Puccinellia nuttalliana*) are common and occur at low to moderate cover. Short-statured grasses such as Sandberg bluegrass are not abundant in this phase but are generally present at low cover. Forbs are not common and generally comprise 5 percent cover or less. Species that may occur are common yarrow (*Achillea millefolium*), curlycup gumweed, and various annuals. The principle shrub on this site is Wyoming big sagebrush; canopy cover is typically 5 to 15 percent. Other shrubs and subshrubs that may occur at low cover are prairie sagewort (*Artemisia frigida*), also known as fringed sagewort, and Gardner's saltbush (*Atriplex gardneri*). The approximate species composition of the reference plant community is as follows:

#### Percent composition by weight\*

Western wheatgrass 30-35%

Inland Saltgrass 20%

Sodium tolerant bunchgrasses 5-10%

Sandberg bluegrass 5%

Other native grasses 10%

Perennial forbs 5%

Wyoming big sagebrush 15% (canopy cover 5-15%)

Other shrubs/subshrubs 5%

#### Estimated Total Annual Production (lbs./ac)\*

Low - 450

Representative Value - 650

High - 800

\*Estimated based on current data – subject to revision

#### Phase 1.2: Post-Fire Community Phase

The Post-Fire Community Phase (1.2) occurs when the plant community is burned either by wildfire or prescribed fire and may persist for as long as 30 years after burning. It is characterized by a western wheatgrass-inland saltgrass dominated plant community. Sodium tolerant bunchgrasses are common and occur at low to moderate cover. Short-statured grasses such as Sandberg bluegrass are not abundant in this phase but are generally present at low cover. Saltbush, particularly Gardner's saltbush, recovers rapidly after fire (Howard, 2003; Reed, 1993) and may be present in this phase. Wyoming big sagebrush will be eliminated or nearly so immediately following fire. Recovery of Wyoming big sagebrush depends on many factors including climate, proximity to a seed source, and fire intensity. Typically, there is little or no regeneration for 5 to 10 years post-fire, then cover begins to increase gradually until an equilibrium level is reached (Watts and Wambolt, 1996). Generally recovery is prolonged, sometimes taking as long as 30 years (Wambolt et al., 2001).



### Phase 1.3: At-Risk Community Phase

The At-Risk Community Phase (1.3) occurs when site condition declines due to drought, improper grazing management, or a combination of these factors. This community phase is characterized by nearly equal proportions of Inland saltgrass and shortgrasses. Shortgrasses such as Sandberg bluegrass are increasing in this phase. The cover of mid-statured wheatgrasses is greatly reduced and sodium tolerant bunchgrasses are rare or absent. Unpalatable forbs such as curlycup gumweed also increase in this phase. Cover of Wyoming big sagebrush will vary depending on the length of time since the last burn.

#### Community Phase Pathway 1.1a

Fire will transition the Shrubland Community Phase (1.1) to the Post-Fire Community Phase (1.2). Wyoming big sagebrush is killed and perennial grasses will dominate the site.

#### Community Phase Pathway 1.1b

Drought, improper grazing management, or a combination of these factors can shift the Shrubland Community Phase (1.1) to the At Risk Community Phase (1.3). These factors favor a decrease in rhizomatous wheatgrasses and an increase in inland saltgrass and shortgrasses. Wyoming big sagebrush cover will be similar to the Shrubland Community Phase (1.1).

#### Community Phase Pathway 1.2a

Thirty years or more of natural vegetative regrowth will transition the Post-Fire Community Phase (1.2) to the Shrubland Community Phase (1.1). Thirty years or more without fire permits Wyoming big sagebrush to recolonize the site.

#### Community Phase Pathway 1.2b

Drought, improper grazing management, or a combination of these factors can shift the Post-Fire Community Phase (1.2) to the At Risk Community Phase (1.3). These factors favor a decrease in rhizomatous wheatgrasses and an increase in inland saltgrass and shortgrasses. Wyoming big sagebrush cover will be similar to the Post-Fire Community Phase (1.2).

#### Community Phase Pathway 1.3a

Less than 30 years post-fire; normal or above-average precipitation and proper grazing management transitions the At Risk Community Phase (1.3) to the Post-Fire Community Phase (1.2).

#### Community Phase Pathway 1.3b

Thirty years or more post-fire; normal or above-average precipitation and proper grazing management transitions the At Risk Community Phase (1.3) to the Shrubland Community Phase (1.1).

### Transition T1A

Prolonged drought, improper grazing practices, or a combination of these factors weaken the resilience of the Reference State (1) and drive its transition to the Shortgrass State (2). The Reference State (1) transitions to the Shortgrass State (2) when mid-statured, cool-season grasses become rare and contribute little to production. Shortgrasses, particularly Sandberg bluegrass, and unpalatable forbs dominate the plant community.

### Transition T1B

The Reference State (1) transitions to the Invaded State (3) when invasive plant species or noxious weeds invade the Shortgrass State (2). These communities are commonly adjacent to seeded pastures. Exotic plant species dominate the site in terms of cover and production. Site resilience has been substantially reduced. In addition, other rangeland health attributes, such as reproductive capacity of native grasses and soil quality, have been substantially altered from the Reference State (1).

### Transition T1C

Tillage or application of herbicide followed by seeding of cultivated crops, such as winter wheat, spring wheat, and barley, transitions the Reference State (1) to the Cropland State (4).

### State 2: Shortgrass State

The Shortgrass State (2) consists of two community phases. The dynamics of this state are driven by long-term drought, improper grazing management, or a combination of these factors. Shortgrasses such as Sandberg

bluegrass increase with long-term improper grazing at the expense of mid-statured grasses (Coupland, 1961; Biondini and Manske, 1996; Derner and Whitman, 2009). Reductions in stocking rates can reduce shortgrass cover and increase the cover of cool-season midgrasses, although this recovery may take decades (Dormaar and Willms, 1990). Cover of Wyoming big sagebrush varies depending on fire frequency, with dynamics similar to the Reference State (1).

#### Phase 2.1: Shrub/Shortgrass Community Phase

The Shrub/Shortgrass Community Phase (2.1) occurs when site conditions decline due to long-term drought or improper grazing, and a fire has not occurred on the site for at least 30 years. In this phase, mid-statured grasses, particularly rhizomatous wheatgrasses, have been eliminated or nearly so and replaced by short-statured species, such as Sandberg bluegrass. Unpalatable forbs such as curlycup gumweed are common and may account for as much as 50 percent of the total annual production. Cover of Wyoming big sagebrush is 5 to 15 percent.

#### Phase 2.2: Shortgrass Community Phase

The Shortgrass Community Phase (2.2) occurs when site conditions decline due to long-term drought or improper grazing, and a fire has occurred on the site less than 30 years prior. In this phase, mid-statured grasses, particularly rhizomatous wheatgrasses, have been eliminated or nearly so and replaced by short-statured species, such as Sandberg bluegrass. Unpalatable forbs such as curlycup gumweed are common and may account for as much as 50 percent of the total annual production. Wyoming big sagebrush is rare.

#### Community Phase Pathway 2.1a

Fire will transition the Shrub/Shortgrass Community Phase (2.1) to the Shortgrass Community Phase (2.2). Wyoming big sagebrush is killed and perennial grasses will dominate the site.

#### Community Phase Pathway 2.2a

It is believed that 30 years or more of natural vegetative regrowth could transition the Shortgrass Community Phase (2.2) to the Shrub/Shortgrass Community Phase (2.1). It is possible that this transition could occur over time, however, the processes are not fully understood at this time. Therefore, this pathway is considered hypothetical until further investigation can be completed.

#### Transition T2A

The Shortgrass State (2) transitions to the Invaded State (3) when invasive plant species invade the Reference State (1). These communities are commonly adjacent to seeded pastures. Exotic plant species dominate the site in terms of cover and production. Site resilience has been substantially reduced. In addition, other rangeland health attributes, such as reproductive capacity of native grasses and soil quality, have been substantially altered from the Reference State (1).

#### Transition T2B

Tillage or application of herbicide followed by seeding of cultivated crops, such as winter wheat, spring wheat, and barley, transitions the Shortgrass State (2) to the Cropland State (4).

#### Restoration Pathway R2A

A reduction in livestock grazing pressure alone may not be sufficient to restore the Shortgrass State (2) to the Reference State (1) (Dormaar and Willms, 1990). Practices such as range seeding may be necessary (Hart et al., 1985), but these are management intensive and costly. Therefore, returning the Shortgrass State (2) to the Reference State (1) can require considerable energy and cost and may not be feasible within a reasonable amount of time.

#### State 3: Invaded State

The Invaded State (3) occurs when invasive plant species invade adjacent native grassland communities. Invasive species dynamics are not well understood on this ecological site. Invasive species that have been documented on this site include annual bromes, smooth brome (*Bromus inermis*), and crested wheatgrass (*Agropyron cristatum*). Crested wheatgrass, in particular, is very aggressive and can outcompete native species when conditions are favorable. Noxious weeds such as leafy spurge have not been documented on this site. Further study is needed to fully access the ecological dynamics of the Invaded State (3).

#### Transition T3A

Tillage or application of herbicide followed by seeding of cultivated crops, such as winter wheat, spring wheat, and

barley, transitions the Invaded State (3) to the Cropland State (4).

#### State 4: Cropland State

The Cropland State (4) occurs when land is put into cultivation. Major crops include winter wheat, spring wheat, and barley. This site is generally not well suited to crops, and cereal grain production is limited.

#### Transition T4A

The transition from the Cropland State (4) to the Post-Cropland State (5) occurs with the cessation of cultivation. The site may also be seeded to perennial forage species. Such seedings may be comprised of introduced grasses and legumes, or a mix of native species.

#### State 5: Post-Cropland State

The Post-Cropland State (5) occurs when cultivated cropland is abandoned and allowed to either re-vegetate naturally or is seeded back to perennial species for grazing or wildlife use. This state can transition back to the Cropland State (4) if the site is put back into cultivation. No formal studies have been obtained regarding big sagebrush recovery following cultivation. Preliminary evidence suggests that, initially, silver sagebrush may replace big sagebrush in this state. Further investigation is needed to assess big sagebrush recovery in the Post-Cropland State (5).

#### Phase 5.1: Abandoned Cropland Phase

The Abandoned Cropland Phase (5.1) occurs in the absence of active management. The site can re-vegetate naturally and, over time, potentially return to a perennial grassland community with western wheatgrass and Sandberg bluegrass. Shortly after cropland is abandoned, annual and biennial forbs and annual brome grasses invade the site (Samuel and Hart, 1994). The site is highly susceptible to erosion due to the absence of perennial species. Eventually, these pioneering annual species are replaced by perennial forbs and perennial shortgrasses. Invasion of the site by exotic species, such as crested wheatgrass and annual bromes, will depend upon the site's proximity to a seed source.

Fifty or more years after cultivation, these sites may have species composition similar to phases in the Reference State (1). However, soil quality is consistently lower than conditions prior to cultivation (Dormaar and Smoliak, 1985; Christian and Wilson, 1999) and a shift to the Reference State (1) is unlikely within a reasonable timeframe.

#### Phase 5.2: Perennial Grass Phase

The Perennial Grass Phase (5.2) occurs when the site is seeded to perennial forage species. When the site is seeded to introduced perennial grasses such as RS wheatgrass, also known as hybrid wheatgrass, this community phase can persist for several decades. A mixture of native species may also be seeded to provide species composition and structural complexity similar to that of the Reference State (1). However, soil quality conditions have been substantially altered and will not return to pre-cultivation conditions within a reasonable timeframe (Dormaar et al., 1994).

#### Transition 5A

Tillage or application of herbicide followed by seeding of cultivated crops, such as winter wheat, spring wheat, and barley, transitions the Post-Cropland State (5) to the Cropland State (4).

### **State and transition model**

**Loamy Sodic Dry Shrubland  
R052XY713MT**

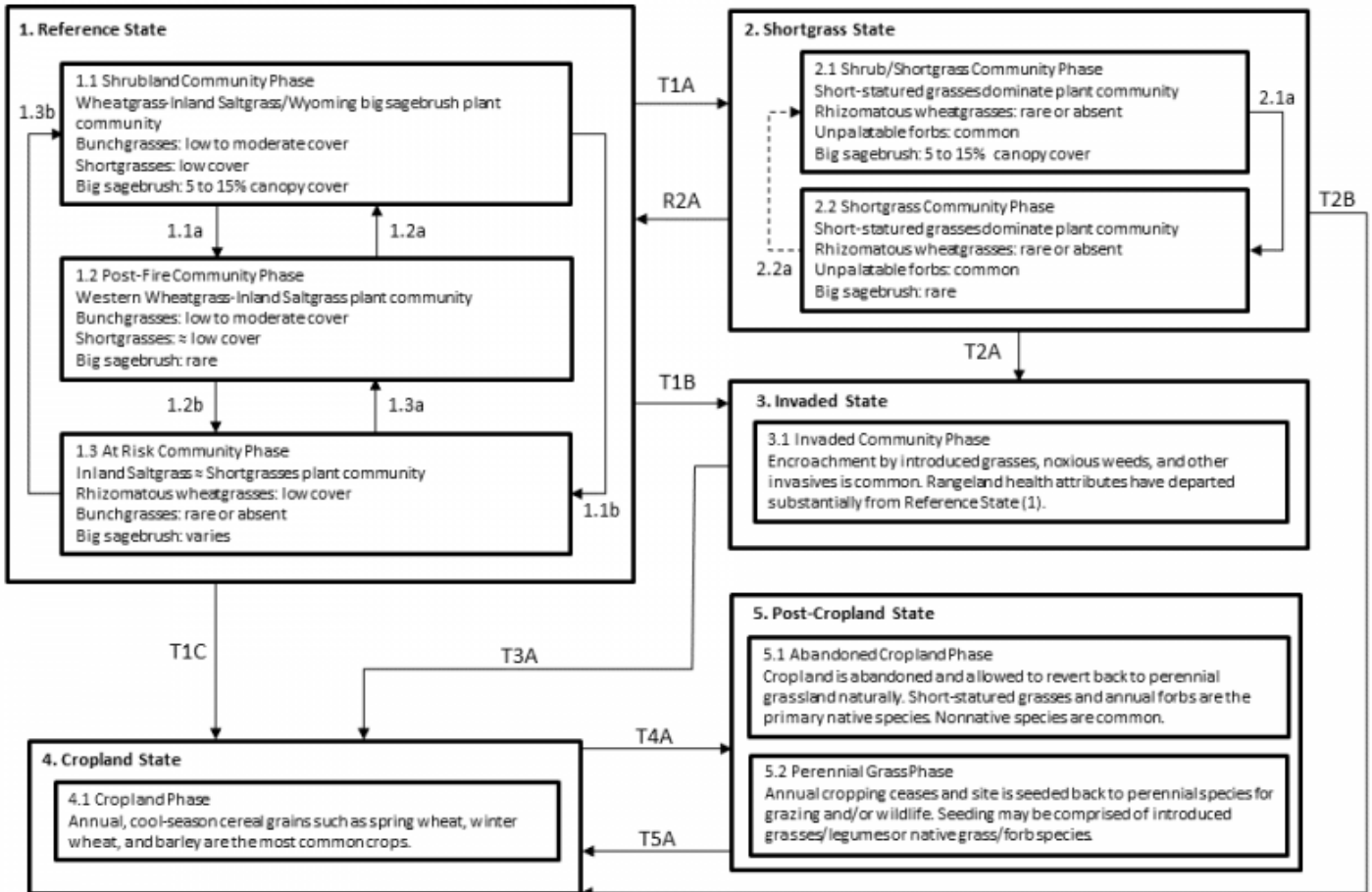


Figure 2. State-and-transition diagram.

**Loamy Sodic Dry Shrubland  
R052XY713MT**

**Legend**

- 1.1a, 2.1a - fire
  - 1.2a, 2.2a - approximately 30 years post-fire regrowth
  - 1.1b - drought, improper grazing management
  - 1.2b - drought, improper grazing management
  - 1.3a - normal or above average precipitation, proper grazing management (< 30 years post fire)
  - 1.3b - normal or above average precipitation, proper grazing management (≥ 30 years post fire)
  - T1A - prolonged drought, improper grazing, or a combination of these factors
  - T1B - introduction of non-native invasive species (crested wheatgrass, noxious weeds, etc.)
  - T2A - introduction of weedy species; combined with drought and/or improper grazing management
  - R2A - range seeding, grazing land mechanical treatment, timely moisture, proper grazing management (management intensive and costly)
  - T1C, T2B, T3A, T5A - conversion to cropland
  - T4A - cessation of annual cropping
- Note: dashed arrows represent hypothesized pathways*

*Figure 2 (continued). State-and-transition legend.*

## **Inventory data references**

Data for this provisional ecological site was obtained from one medium-intensity plot. This plot, in combination with professional experience and a review of the scientific literature, was used to approximate the reference plant community. Information for other states and community phases was obtained from a review of the scientific literature and professional experience. All community phases are considered provisional based on these plots and the sources identified in this ecological site description.

## **Other references**

- Adams, B.W., et al. 2013. Rangeland plant communities for the dry mixedgrass natural subregion of Alberta. Second approximation. Rangeland Management Branch, Policy Division, Alberta Environment and Sustainable Resource Development, Lethbridge, Pub. No. T/040.
- Anderson, R.C. 2006. Evolution and origin of the central grassland of North America: Climate, fire, and mammalian grazers. *Journal of the Torrey Botanical Society* 133:626-647.
- Baskin, J.M., and C.C. Baskin. 1981. Ecology of germination and flowering in the weedy winter annual grass *Bromus japonicus*. *Journal of Range Management* 34:369-372.
- Biondini, M.E., and L. Manske. 1996. Grazing frequency and ecosystem processes in a northern mixed prairie, USA. *Ecological Applications* 6:239-256.
- Biondini, M.E., B.D. Patton, and P.E. Nyren. 1998. Grazing intensity and ecosystem processes in a northern mixed-grass prairie, USA. *Ecological Applications* 8:469-479.
- Bloom-Cornelius, I.V. 2011. Vegetation response to fire and domestic and native ungulate herbivory in a Wyoming

big sagebrush ecosystem. M.S. thesis, Oklahoma State University. Stillwater, OK.

- Bragg, T.B. 1995. The physical environment of the Great Plains grasslands. In: A. Joern and K.H. Keeler (eds.) *The Changing Prairie*, Oxford University Press, Oxford, pp. 49-81.
- Branson, D.H., and G.A. Sword. 2010. An experimental analysis of grasshopper community responses to fire and livestock grazing in a northern mixed-grass prairie. *Environmental Entomology* 39:1441-1446.
- Bylo, L.N., N. Koper, and K.A. Molloy. 2014. Grazing intensity influences ground squirrel and American badger habitat use in mixed-grass prairies. *Rangeland Ecology and Management* 67:247-254.
- Christian, J.M., and S.D. Wilson. 1999. Long-term ecosystem impacts of an introduced grass in the Northern Great Plains. *Ecology* 80:2397-2407.
- Clarke, S.E, E.W. Tisdale, and N.A. Skoglund. 1947. The effects of climate and grazing practices on short-grass prairie vegetation in southern Alberta and southwestern Saskatchewan. Canadian Department of Agriculture Technical Bulletin No. 46.
- Cleland, D.T., et al. 1997. National hierarchical framework of ecological units. In: M.S. Boyce and A. Haney (eds.) *Ecosystem Management Applications for Sustainable Forest and Wildlife Resources*, Yale University Press, New Haven, CT.
- Cooper, S.V., C. Jean, and P. Hendricks. 2001. Biological survey of a prairie landscape in Montana's glaciated plains. Report to the Bureau of Land Management. Montana Natural Heritage Program, Helena, MT.
- Cooper, S.V., and W.M. Jones. 2003. Site descriptions of high-quality wetlands derived from existing literature sources. Report to the Montana Department of Environmental Quality. Montana Natural Heritage Program, Helena, MT.
- Coupland, R.T. 1950. Ecology of the mixed prairie of Canada. *Ecological Monographs* 20:271-315.
- Coupland, R.T. 1958. The effects of fluctuations in weather upon the grasslands of the Great Plains. *Botanical Review* 24:273-317.
- Coupland, R.T. 1961. A reconsideration of grassland classification in the Northern Great Plains of North America. *Journal of Ecology* 49:135-167.
- Coupland, R.T., and R.E. Johnson. 1965. Rooting characteristics of native grassland species in Saskatchewan. *Journal of Ecology* 53:475-507.
- Cowardin, L.M., V. Carter, F.C. Golet, and E.T. LaRoe. 1979. Classification of wetlands and deepwater habitats of the United States. *US Fish and Wildlife Service FWS/OBS*, 79(31), 131.
- Crowe, E. and G. Kudray. 2003. Wetland Assessment of the Whitewater Watershed. Report to U.S. Bureau of Land Management, Malta Field Office. Montana Natural Heritage Program, Helena, MT.
- Davis, S.K., R.J. Fisher, S.L. Skinner, T.L. Shaffer, and R.M. Brigham. 2013. Songbird abundance in native and planted grassland varies with type and amount of grassland in the surrounding landscape. *Journal of Wildlife Management* 77:908-919.
- DeKeyser, E.S., M. Meehan, G. Clambey, and K. Krabbenhoft. 2013. Cool season invasive grasses in northern Great Plains natural areas. *Natural Areas Journal* 33:81-90.
- DeKeyser, S., G. Clambey, K. Krabbenhoft, and J. Ostendorf. 2009. Are changes in species composition on central North Dakota rangelands due to non-use management? *Rangelands* 31:16-19.
- DeLuca, T.H., and P. Lesica. 1996. Long-term harmful effects of crested wheatgrass on Great Plains grassland ecosystems. *Journal of Soil and Water Conservation* 51:408-409.

- Derner, J.D., and R.H. Hart. 2007. Grazing-induced modifications to peak standing crop in northern mixed-grass prairie. *Rangeland Ecology and Management* 60:270-276.
- Derner, J.D., and A.J. Whitman. 2009. Plant interspaces resulting from contrasting grazing management in northern mixed-grass prairie: Implications for ecosystem function. *Rangeland Ecology and Management* 62:83-88.
- Derner, J.D., W.K. Lauenroth, P. Stapp, and D.J. Augustine. 2009. Livestock as ecosystem engineers for grassland bird habitat in the western Great Plains of North America. *Rangeland Ecology and Management* 62:111-118.
- Dix, R.L. 1960. The effects of burning on the mulch structure and species composition of grasslands in western North Dakota. *Ecology* 41:49-56.
- Dormaar, J.F., and S. Smoliak. 1985. Recovery of vegetative cover and soil organic matter during revegetation of abandoned farmland in a semiarid climate. *Journal of Range Management* 38:487-491.
- Dormaar, J.F., and W.D. Willms. 1990. Effect of grazing and cultivation on some chemical properties of soils in the mixed prairie. *Journal of Range Management* 43:456-460.
- Dormaar, J.F., B.W. Adams, and W.D. Willms. 1994. Effect of grazing and abandoned cultivation on a *Stipa-Bouteloua* community. *Journal of Range Management* 47:28-32.
- Dormaar, J.F., M.A. Naeth, W.D. Willms, and D.S. Chanasyk. 1995. Effect of native prairie, crested wheatgrass (*Agropyron cristatum*) and Russian wildrye (*Elymus junceus*) on soil chemical properties. *Journal of Range Management* 48:258-263.
- Fansler, V.A., and J.M. Mangold. 2010. Restoring native plants to crested wheatgrass stands. *Restoration Ecology* 19:16-23.
- Federal Geographic Data Committee. 2008. The National Vegetation Classification Standard, Version 2. FGDC Vegetation Subcommittee. FGDC-STD-005-2008 (Version 2). pp. 126.
- Fullerton, D.S., and R.B. Colton. 1986. Stratigraphy and correlation of the glacial deposits on the Montana Plains. U.S. Geological Survey.
- Fullerton, D.S., R.B. Colton, C.A. Bush, and A.W. Straub. 2004. Map showing spatial and temporal relations of mountain and continental glaciations on the northern plains, primarily in northern Montana and northwestern North Dakota. U.S. Geologic Survey pamphlet accompanying Scientific Investigations Map 2843.
- Fullerton, D.S., R.B. Colton, and C.A. Bush. 2013. Quaternary geologic map of the Shelby 1° x 2° quadrangle, Montana: U.S. Geological Survey Open-File Report 2012-1170, scale 1:250,000.
- Galatowitsch, S.M., and A.G. Van der Valk. 1996. The vegetation of restored and natural prairie wetlands. *Ecological Applications*. 6:1 pp.102-112.
- Gilbert, M.C., P.M. Whited, E.J. Clairain Jr., and R.D. Smith. 2006. A regional guidebook for applying the hydrogeomorphic approach to assessing wetland functions of prairie potholes. U.S. Army Corps of Engineers Final Report, Washington, DC.
- Grant, T.A., B. Flanders-Wanner, T.L. Shaffer, R.K. Murphy, and G.A. Knutsen. 2009. An emerging crisis across northern prairie refuges: Prevalence of invasive plants and a plan for adaptive management. *Ecological Restoration* 27:58-65.
- Haferkamp, M.R., R.K. Heitschmidt, and M.G. Karl. 1997. Influence of Japanese brome on western wheatgrass yield. *Journal of Range Management* 50:44-50.
- Hansen, P.L., et al. 1995. Classification and management of Montana's riparian and wetland sites. University of Montana, Montana Forest and Conservation Experiment Station, Miscellaneous Publication No. 54.

- Harmoney, K.R. 2007. Grazing and burning Japanese brome (*Bromus japonicus*) on mixed grass rangelands. *Rangeland Ecology and Management* 60:479-486.
- Hart, M., S.S. Waller, S.R. Lowry, and R.N. Gates. 1985. Disking and seeding effects on sod bound mixed prairie. *Journal of Range Management* 38:121-125.
- Heidel, B., S.V. Cooper, and C. Jean. 2000. Plant species of special concern and plant associations of Sheridan County, Montana. Report to U.S. Fish and Wildlife Service. Montana Natural Heritage Program, Helena, MT.
- Heidinga, L., and S.D. Wilson. 2002. The impact of an invading alien grass (*Agropyron cristatum*) on species turnover in native prairie. *Diversity and Distributions* 8:249-258.
- Heitschmidt, R.K., and L.T. Vermeire. 2005. An ecological and economic risk avoidance drought management decision support system. In: J.A. Milne (ed.) *Pastoral Systems in Marginal Environments*, XXth International Grasslands Congress, July 2005, p. 178.
- Henderson, A.E., and S.K. Davis. 2014. Rangeland health assessment: A useful tool for linking range management and grassland bird conservation? *Rangeland Ecology and Management* 67:88-98.
- Henderson, D.C., and M.A. Naeth. 2005. Multi-scale impacts of crested wheatgrass invasion in mixed-grass prairie. *Biological Invasions* 7:639-650.
- Herrick, J.E., J.W. Van Zee, K.M. Havstad, L.M. Burkett, and W.G. Whitford. 2009. *Monitoring manual for grassland, shrubland and savanna ecosystems*. U.S. Department of Agriculture, Agricultural Research Service, Jornada Experimental Range, Las Cruces, NM.
- Higgins, K.F. 1986. Interpretation and compendium of historical fire accounts in the Northern Great Plains. U.S. Fish and Wildlife Service Resource Publication 161.
- Holechek, J.L. 1981. Crested wheatgrass. *Rangelands* 3:151-153.
- Howard, J.L. 1999. *Artemisia tridentata* subsp. *wyomingensis*. In: *Fire Effects Information System*, U.S. Department of Agriculture, Forest Service <http://www.fs.fed.us/database/feis/plants/shrub/artriw/all.html> (Accessed 8/11/2016).
- Howard, J.L. 2003. *Atriplex canescens*. In: *Fire Effects Information System*, U.S. Department of Agriculture, Forest Service <http://www.fs.fed.us/database/feis/plants/shrub/atrcan/all.html> (Accessed 9/13/2016).
- Joern, A. 2005. Disturbance by fire frequency and bison grazing modulate grasshopper assemblages in tallgrass prairie. *Ecology* 86:861-873.
- Jones, W.M. 2004. Using vegetation to assess wetland condition: a multimetric approach for temporarily and seasonally flooded depression wetlands and herbaceous-dominated intermittent and ephemeral riverine wetlands in the northwestern glaciated plains ecoregion, Montana. Report to the Montana Department of Environmental Quality and the U.S. Environmental Protection Agency. Montana Natural Heritage Program, Helena, MT.
- Knopf, F.L. 1996. Prairie legacies—birds. In: F.B. Samson and F.L. Knopf (eds.) *Prairie Conservation: Preserving North America's Most Endangered Ecosystem*, Island Press, Washington, DC, pp. 135-148.
- Knopf, F.L., and F.B. Samson. 1997. Conservation of grassland vertebrates. In: F.B. Samson and F.L. Knopf (eds.) *Ecology and Conservation of Great Plains Vertebrates: Ecological Studies* 125, Springer-Verlag, New York, NY, pp. 273-289.
- Krzic, M., K. Broersma, D.J. Thompson, and A.A. Bomke. 2000. Soil properties and species diversity of grazed crested wheatgrass and native rangelands. *Journal of Range Management* 53:353-358.
- Lacey, J., R. Carlstrom, and K. Williams. 1995. Chiseling rangeland in Montana. *Rangelands* 17:164-166.



- Lauenroth, W.K., O.E. Sala, D.P. Coffin, and T.B. Kirchner. 1994. The importance of soil water in recruitment of *Bouteloua gracilis* in the shortgrass steppe. *Ecological Applications* 4:741-749.
- Laycock, W.A. 1988. History of grassland plowing and grass planting on the Great Plains. In: J.E. Mitchell (ed.) *Impacts of the Conservation Reserve Program in the Great Plains—Symposium Proceedings, September 16-18, 1987*. USDA Forest Service, Rocky Mountain Forest and Range Experiment Station, General Technical Report RM-158.
- Laycock, W.A. 1991. Stable states and thresholds of range condition on North American rangelands. *Journal of Range Management* 44:427-433.
- Lesica, P., and P. Husby. 2006. *Field Guide to Montana's Wetland Vascular Plants*. Montana Wetlands Trust. Helena, MT.
- Lockwood, J.A. 2004. *Locust: The devastating rise and mysterious disappearance of the insect that shaped the American frontier*. Basic Books, New York, NY.
- Looman, J., and D.H. Heinrichs. 1973. Stability of crested wheatgrass pastures under long-term pasture use. *Canadian Journal of Plant Science* 53:501-506.
- Madden, E.M., R.K. Murphy, A.J. Hansen, and L. Murray. 2000. Models for guiding management of prairie bird habitat in northwestern North Dakota. *American Midland Naturalist* 144:377-392.
- McNab, W.H., et al. 2007. *Description of ecological subregions: Sections of the conterminous United States [CD-ROM]*. USDA Forest Service, General Technical Report WO-76B.
- McIntyre, C., K. Newlon, L. Vance, and M. Burns. 2011. *Milk, Marias, and St. Mary monitoring: developing a long-term rotating basin wetland assessment and monitoring strategy for Montana*. Report to the United States Environmental Protection Agency. Montana Natural Heritage Program, Helena, MT.
- Miller, J.J., and J.A. Brierley. 2011. Solonchic soils of Canada: Genesis, distribution, and classification. *Canadian Journal of Soil Science* 91:889-902.
- Montana State College. 1949. *Similar vegetative rangeland types in Montana*. Montana State College, Agricultural Experiment Station.
- Mushet, D.M., N.H. Euliss, Jr., and C.A. Stockwell. 2012. A conceptual model to facilitate amphibian conservation in the Northern Great Plains. *Great Plains Research* 22:45-58.
- Nesser, J.A., G.L. Ford, C.L. Maynard, and D.S. Page-Dumroese. 1997. *Ecological units of the Northern Region: Subsections*. USDA Forest Service, Intermountain Research Station, General Technical Report INT-GTR-369.
- Oard, M.J. 1993. A method of predicting chinook winds east of the Montana Rockies. *Weather and Forecasting* 8:166-180.
- Ogle, S.M., W.A. Reiners, and K.G. Gerow. 2003. Impacts of exotic annual brome grasses (*Bromus* spp.) on ecosystem properties of the northern mixed grass prairie. *American Midland Naturalist* 149:46-58.
- Reed, W.R. 1993. *Atriplex gardneri*. In: *Fire Effects Information System*, U.S. Department of Agriculture, Forest Service <http://www.fs.fed.us/database/feis/plants/shrub/atrgar/all.html> (Accessed 9/13/2016).
- Roath, L.R. 1988. Implications of land conversions and management for the future. In: J.E. Mitchell (ed.) *Impacts of the Conservation Reserve Program in the Great Plains—Symposium Proceedings, September 16-18, 1987*. USDA Forest Service, Rocky Mountain Forest and Range Experiment Station, General Technical Report RM-158.
- Rogler, G.A., and R.J. Lorenz. 1983. Crested wheatgrass: Early history in the United States. *Journal of Range Management* 36:91-93.

- Romo, J.T. 2011. Clubmoss, precipitation, and microsite effects on emergence of graminoid and forb seedlings in the semiarid northern mixed prairie of North America. *Journal of Arid Environments* 75:98-105.
- Rowe, J.S. 1969. Lightning fires in Saskatchewan grassland. *Canadian Field Naturalist* 83:317-327.
- Salo, E.D., et al. 2004. Grazing intensity effects on vegetation, livestock and non-game birds in North Dakota mixed-grass prairie. *Proceedings of the 19th North American Prairie Conference*, Madison, WI.
- Samuel, M.J., and R.H. Hart. 1994. Sixty-one years of secondary succession on rangelands of the Wyoming High Plains. *Journal of Range Management* 47:184-191.
- Semlitsch, R.D. 2000. Principles for management of aquatic-breeding amphibians. *Journal of Wildlife Management* 64:615-631.
- Shay, J., D. Kunec, and B. Dyck. 2001. Short-term effects of fire frequency on vegetation composition and biomass in mixed prairie in south-western Manitoba. *Plant Ecology* 155:157-167.
- Smith, B., and G.J. McDermid. 2014. Examination of fire-related succession within the dry mixed-grass subregion of Alberta with the use of MODIS and Landsat. *Rangeland Ecology and Management* 67:307-317.
- Smith, R.E. 2013. Conserving Montana's sagebrush highway: Long distance migration in sage-grouse. M.S. thesis, University of Montana, Missoula, MT.
- Smoliak, S. 1974. Range vegetation and sheep production at three stocking rates on *Stipa-Bouteloua* prairie. *Journal of Range Management* 27:23-26.
- Smoliak, S., and J.F. Dormaar. 1985. Productivity of Russian wildrye and crested wheatgrass and their effect on prairie soils. *Journal of Range Management* 38:403-405.
- Smoliak, S., J.F. Dormaar, and A. Johnston. 1972. Long-term grazing effects on *Stipa-Bouteloua* prairie soils. *Journal of Range Management* 25:246-250.
- Soil Survey Staff. 2014. Keys to soil taxonomy, 12th edition. USDA Natural Resources Conservation Service.
- Soller, D.R. 2001. Map showing the thickness and character of Quaternary sediments in the glaciated United States east of the Rocky Mountains. U.S. Geological Survey Miscellaneous Investigations Series I-1970-E, scale 1:3,500,000.
- Stephens, S.E., J.J. Rotella, M.S. Lindberg, M.L. Taper, and J.K. Ringelman. 2005. Duck nest survival in the Missouri Coteau of North Dakota: Landscape effects at multiple spatial scales. *Ecological Applications* 15:2137-2149.
- Stewart, R.E., and H.A. Kantrud. 1971. Classification of natural ponds and lakes in the glaciated prairie region. No. 92. US Fish and Wildlife Service, Bureau of Sport Fisheries and Wildlife.
- Tiner, R.W. 2003. Correlating Enhanced National Wetlands Inventory Data with Wetland Functions for Watershed Assessments: A Rationale for Northeastern U.S. Wetlands. U.S. Fish and Wildlife Service, National Wetlands Inventory Program, Region 5, Hadley, MA.  
[http://www.fws.gov/northeast/wetlands/pdf/CorrelatingEnhancedNWIDataWetlandFunctionsWatershedAssessments\[1\].pdf](http://www.fws.gov/northeast/wetlands/pdf/CorrelatingEnhancedNWIDataWetlandFunctionsWatershedAssessments[1].pdf)
- Toledo, D., M. Sanderson, K. Spaeth, J. Hendrickson, and J. Printz. 2014. Extent of Kentucky bluegrass and its effect on native plant species diversity and ecosystem services in the Northern Great Plains of the United States. *Invasive Plant Science and Management* 7:543-552.
- Umbanhowar, Jr., C.E. 2004. Interactions of climate and fire at two sites in the Northern Great Plains. *Palaeogeography, Palaeoclimatology, and Palaeoecology* 208:141-152.

U.S. Department of Agriculture, Natural Resources Conservation Service. Glossary of landform and geologic terms. National Soil Survey Handbook, Title 430-VI, Part 629.02c.

[http://www.nrcs.usda.gov/wps/portal/nrcs/detail/soils/ref/?cid=nrcs142p2\\_054242](http://www.nrcs.usda.gov/wps/portal/nrcs/detail/soils/ref/?cid=nrcs142p2_054242) (Accessed 13 April 2016).

U.S. Fish and Wildlife Service. 2013. Greater sage-grouse (*Centrocercus urophasianus*) conservation objectives: Final report.

Vance, L., S. Owen, and J. Horton. 2013. Literature review: Hydrology-ecology relationships in Montana prairie wetlands and intermittent/ephemeral streams. Report to the Cadmus Group and the U.S. Environmental Protection Agency. Montana Natural Heritage Program, Helena, MT.

Van Dyne, G.M., and W.G. Vogel. 1967. Relation of *Selaginella densa* to site, grazing, and climate. *Ecology* 48:438-444.

Vaness, B.M., and S.D. Wilson. 2007. Impact and management of crested wheatgrass (*Agropyron cristatum*) in the northern Great Plains. *Canadian Journal of Plant Science* 87:1023-1028.

Vermeire, L.T., J.L. Crowder, and D.B. Wester. 2011. Plant community and soil environment response to summer fire in the northern Great Plains. *Rangeland Ecology & Management* 64:37-46.

Vermeire, L.T., J.L. Crowder, and D.B. Wester. 2014. Semiarid rangeland is resilient to summer fire and postfire grazing utilization. *Rangeland Ecology & Management* 67:52-60.

Vuke, S.M., K.W. Porter, J.D. Lonn, and D.A. Lopez. 2007. Geologic map of Montana - information booklet: Montana Bureau of Mines and Geology Geologic Map 62-D.

Wambolt, C.L., K.S. Walhof, and M.R. Frisina. 2001. Recovery of big sagebrush communities after burning in southwestern Montana. *Journal of Environmental Management*. 61:243-252.

Watts, M.J., and C.L. Wambolt. 1996. Long-term recovery of Wyoming big sagebrush after four treatments. *Journal of Environmental Management* 46:95-102.

Whisenant, S.G. 1990. Postfire population dynamics of *Bromus japonicus*. *American Midland Naturalist* 123:301-308.

Wilson, S.D., and J.M. Shay. 1990. Competition, fire, and nutrients in a mixed-grass prairie. *Ecology* 71:1959-1967.

With, K.A. 2010. McCown's longspur (*Rhynchophanes mccownii*). In: A. Poole (ed.) *The Birds of North America* (online), Cornell Lab of Ornithology, Ithaca. <http://bna.birds.cornell.edu/bna/species/09>.

## **Contributors**

Scott Brady  
Stuart Veith

## **Approval**

Kirt Walstad, 12/28/2022

## **Acknowledgments**

This provisional ecological site description could not have been completed without the contributions of Karen Newlon. She conducted an extensive literature review, which provided most of the background information for this project as well as many of the references. She also co-authored the Loamy and Thin Claypan Dry Grassland ecological sites previously prepared in MLRA 52.

A number of USDA-NRCS and USDI-BLM staff supported this project. Staff contributions are as follows:

Soil Concepts, Soils Information, and Field Descriptions  
Charlie French, USDA-NRCS  
Josh Sorlie, USDI-BLM

NASIS Reports, Data Dumps, and Soil Sorts  
Bill Drummond, USDA-NRCS  
Pete Weikle, USDA-NRCS

Peer Review and Beta Testing  
Kirt Walstad, USDA-NRCS  
Kyle Steele, formerly USDA-NRCS  
Kelsey Molloy, USDA-NRCS  
Rick Caquelin, USDA-NRCS  
Josh Sorlie, USDI-BLM  
BJ Rhodes, USDI-BLM

Editing  
Ann Kinney, USDA-NRCS  
Jenny Sutherland, USDA-NRCS

Quality Control  
Kirt Walstad, USDA-NRCS

Quality Assurance  
Stacey Clark, USDA-NRCS

## Rangeland health reference sheet

Interpreting Indicators of Rangeland Health is a qualitative assessment protocol used to determine ecosystem condition based on benchmark characteristics described in the Reference Sheet. A suite of 17 (or more) indicators are typically considered in an assessment. The ecological site(s) representative of an assessment location must be known prior to applying the protocol and must be verified based on soils and climate. Current plant community cannot be used to identify the ecological site.

Author(s)/participant(s)	
Contact for lead author	
Date	05/03/2024
Approved by	Kirt Walstad
Approval date	
Composition (Indicators 10 and 12) based on	Annual Production

## Indicators

1. **Number and extent of rills:**

---

2. **Presence of water flow patterns:**

---

3. **Number and height of erosional pedestals or terracettes:**

---

4. **Bare ground from Ecological Site Description or other studies (rock, litter, lichen, moss, plant canopy are not bare ground):**
- 
5. **Number of gullies and erosion associated with gullies:**
- 
6. **Extent of wind scoured, blowouts and/or depositional areas:**
- 
7. **Amount of litter movement (describe size and distance expected to travel):**
- 
8. **Soil surface (top few mm) resistance to erosion (stability values are averages - most sites will show a range of values):**
- 
9. **Soil surface structure and SOM content (include type of structure and A-horizon color and thickness):**
- 
10. **Effect of community phase composition (relative proportion of different functional groups) and spatial distribution on infiltration and runoff:**
- 
11. **Presence and thickness of compaction layer (usually none; describe soil profile features which may be mistaken for compaction on this site):**
- 
12. **Functional/Structural Groups (list in order of descending dominance by above-ground annual-production or live foliar cover using symbols: >>, >, = to indicate much greater than, greater than, and equal to):**
- Dominant:
- Sub-dominant:
- Other:
- Additional:
- 
13. **Amount of plant mortality and decadence (include which functional groups are expected to show mortality or decadence):**
- 
14. **Average percent litter cover (%) and depth ( in):**
- 
15. **Expected annual annual-production (this is TOTAL above-ground annual-production, not just forage annual-production):**

---

16. **Potential invasive (including noxious) species (native and non-native). List species which BOTH characterize degraded states and have the potential to become a dominant or co-dominant species on the ecological site if their future establishment and growth is not actively controlled by management interventions. Species that become dominant for only one to several years (e.g., short-term response to drought or wildfire) are not invasive plants. Note that unlike other indicators, we are describing what is NOT expected in the reference state for the ecological site:**

---

17. **Perennial plant reproductive capability:**

---