

Ecological site F092XY015WI

Clayey Uplands

Last updated: 4/09/2020
Accessed: 11/13/2024

General information

Provisional. A provisional ecological site description has undergone quality control and quality assurance review. It contains a working state and transition model and enough information to identify the ecological site.

MLRA notes

Major Land Resource Area (MLRA): 092X–Superior Lake Plain

The Wisconsin portion of the Superior Lake Plain (MLRA 92) corresponds very closely to the Superior Coastal Plain Ecological Landscape published by Wisconsin Department of Natural Resources (WDNR 2015). The following brief overview of this MLRA is borrowed from that publication.

The Superior Coastal Plain is bordered on the north by Lake Superior and on the south by the Northwest Sands, Northwest Lowlands, and North Central Forest Ecological Landscapes. The total land area is approximately 1.2 million acres, which mostly consists of privately-owned forestland. The climate is strongly influenced by Lake Superior, resulting in cooler summers, warmer winters, and greater precipitation compared to more inland locations. The most extensive landform in this ecological landscape is a nearly level plain of lacustrine clays that slopes gently northward toward Lake Superior. The coastal plain is cut by deeply incised stream drainages and interrupted by the comparatively rugged Bayfield Peninsula.

During the Late Wisconsin glacial period, this area was covered with the advancing and retreating lobes of Superior and Chippewa. The landscape was rippled with moraines, but they were subdued by deposition of lacustrine materials. As the glaciers receded, glacial lakes riddled the landscape—most notably, Glacial Lake Duluth. The glacier receded eastward, exposing the western Lake Superior Basin. The ice covered the eastern basin, blocking the outlet of the lake, and continued to recede and contribute meltwaters that filled the glacial lake. The deep, red clays were deposited during this period of glacial lakes. The meltwaters from the glacier also contained sands which were deposited along the edge of the glacial lakes as beach deposits. Deep, narrow valleys have since been carved by rivers and streams flowing north into Lake Superior.

Historically, the Superior Coastal Plain was almost entirely forested. Various mixtures of eastern white pine (*Pinus strobus*), white spruce (*Picea glauca*), balsam fir (*Abies balsamea*), white birch (*Betula papyrifera*), balsam poplar (*Populus balsamifera*), quaking aspen (*Populus tremuloides*), and northern white-cedar (*Thuja occidentalis*) occurred on the fine-textured glacio-lacustrine deposits bordering much of the Lake Superior coast. Sandy soils, sometimes interlayered with clays, occur in some places. Such areas supported forests dominated by eastern white pine and red pine (*Pinus resinosa*). Eastern white pine was strongly dominant in some areas, according to mid-19th century notes left by surveyors of the federal General Land Office (Finley, R. 1976). Dry-mesic to wet-mesic northern hardwoods or hemlock-hardwood forests were prevalent on the glacial tills of the Bayfield Peninsula. Large peatlands occurred along the Lake Superior shoreline, associated with drowned river mouths.

Classification relationships

Habitat Types of N. Wisconsin (Kotar, 2002): Six sites key out to *Acer rubrum* – *Abies balsamea* / *Sanicula* spp. [ArAbSn], three sites key out to *Acer saccharum* / *Athyrium felix-femina* – *Rubus pubescens* [AAtRp], one site keys out to *Acer saccharum* / *Sanicula* spp. – *Mitchella repens* [ASnMi], one site keys out to *Acer saccharum* / *Clintonia borealis* [ACI], and one site keys out to *Acer saccharum* – *Tsuga canadensis* / *Maianthemum canadense* [ATM].

Biophysical Setting (Landfire, 2014): This ES is mapped as, Laurentian – Acadian Northern Hardwoods Forest – Hemlock, Laurentian – Acadian Sub-boreal Mesic Balsam Fir-Spruce Forest, Laurentian – Acadian – Northern Pine – (Oak) Forest, North Central Interior Dry-Mesic Oak Forest & Woodland, and North Central Interior Maple – Basswood Forest. The ES is best represented by Northern hardwoods Forest and North Central Interior Maple – Basswood Forest.

WDNR Natural Communities (WDNR, 2015): This ES is most similar to Northern Mesic and Northern Wet-mesic Forests.

USFS Subregions: Superior-Ashland Clay Plain Subsection (212Ya); May contain small areas of Ewen Dissected Lake Plain Subsection (212Jo), Winegar Moraines Subsection (212Jc), Gogebic-Penokee Iron Range Subsection (212Jb), and NorthShore Highlands Subsection (212Lb)*

•Located in Upper Peninsula of Michigan (212J) and Minnesota (212Lb)

Major Land Resource Area (MLRA): Superior Lake Plain (92)

Ecological site concept

Clayey Uplands is the most common ES in MLRA 92. It spans nearly every part of the MLRA. The sites were formed in clayey till or glaciolacustrine deposits, though some sites have a thin (<15 cm) sandy or loamy mantle over the clayey till or glaciolacustrine deposits. Soils are moderately well to well drained, but may have a seasonally high water table with a depth of 0 to 122 cm. The depth to water table can exceed 152 cm during drier periods. Water is received primarily through precipitation. These sites do not remain moist throughout the year. Many sites have carbonates present beginning as shallow as 13 cm, but absent in others. The soils range from strongly acid to moderately alkaline. This range depends on parent materials, whether there is a sandy mantle (acidic, lack of carbonates) or just clayey till or glaciolacustrine deposits. The nutrient availability regime, on a relative scale, is poor to medium. Within the Wisconsin Forest Habitat Type Classification System, this ES most frequently represent the ArAbSn and sometime AAtRp Habitat Types.

Historically, shade tolerant balsam fir and white spruce were best represented tree species on this Ecological Site, but scattered white and red pines were also common. Following early logging, trembling aspen became the dominant forest type, but succession to balsam fir and, to a lesser degree, white spruce and red maple is evident everywhere where seed sources are present. While there is no good record of the degree of red maple representation in the pre-European settlement forests, the species is well represented and successfully reproducing today. Common ground flora species are round-leaved dogwood, wood anemone, sedges, ferns, beaked hazelnut, horsetails, wild strawberry, and raspberries.

This ES differs from Sandy Upland and Loamy Upland based on soil texture, parent material, and depth to seasonally high water table. Clayey Uplands has the finest textures and clayey deposits on every site. This site does not remain saturated for extended lengths of time, differing it from Wet Clayey Lowlands and Moist Clayey Lowlands.

Associated sites

F092XY007WI	<p>Wet Loamy or Clayey Lowlands</p> <p>These sites are poorly to very poorly drained soils that formed in mainly clayey deposits. Some sites may have a sandy or loamy mantle overlying a clayey deposit. Soils remain saturated throughout the year and frequently experience ponding and flooding in the spring and fall. Water table rarely drops below 30cm in drought conditions. Most sites have apparent carbonates, and pH ranges from strongly acid to moderately alkaline. HGM criteria: recharge, Depressional. These sites are often adjacent to Clayey Uplands but located on a lower landscape position in the drainage sequence.</p>
F092XY012WI	<p>Moist Clayey Lowlands</p> <p>These sites are somewhat poorly drained soils with fine textures that formed in clayey deposits. Some sites have a sandy or loamy mantle. The fine materials cause episaturation in spring and fall and remain saturated for extended period, but the water table can reach depths of 152cm during dry periods. Soils range from strongly acid to strongly alkaline. Carbonates present in some soils beginning at 30cm. Depressional. These sites are often adjacent to Clayey Uplands but located on a lower landscape position in the drainage sequence.</p>

Similar sites

F092XY013WI	<p>Sandy Uplands</p> <p>These sites are formed primarily in sandy outwash or beach deposits, and some are underlain by finer glaciofluvial material. Sites are moderately well to well drained, but sites with underlying finer materials may have extended saturation in spring and fall. Sites range from strongly acid to neutral and may contain carbonates. These sites are found in a similar landscape as Clayey Uplands but are coarser textured and in a different drainage sequence.</p>
F092XY014WI	<p>Loamy Uplands</p> <p>These sites are deep, moderately well to well drained loamy soils. They formed in loamy and silty till, glaciolacustrine, or glaciofluvial deposits. Some sites have a sandy mantle. Many sites have a seasonally high water table but does not remain saturated for the growing season. Soils range from strongly acid to strongly alkaline, and some sites have carbonates present. These sites are found in a similar landscape as Clayey Uplands but are coarser textured and in a different drainage sequence.</p>

Table 1. Dominant plant species

Tree	(1) <i>Acer rubrum</i> (2) <i>Abies balsamea</i>
Shrub	(1) <i>Corylus cornuta</i> (2) <i>Alnus incana ssp. rugosa</i>
Herbaceous	(1) <i>Pteridium aquilinum</i> (2) <i>Eurybia macrophylla</i>

Physiographic features

This site occurs on knolls, ridges, hillslopes, interfluves, terraces, and ravines located on till plains and lake plains. Landform shape ranges from linear to convex. Elevation of the landforms range from 185 to 330 meters above sea level. Slopes range from 2 to 60 percent. Slope stability within ravines may be compromised by stream cutting leading to slumping or mass movement slope failure. This site occurs on all slope aspects.

Table 2. Representative physiographic features

Landforms	(1) Lake plain (2) Till plain
Runoff class	High to very high
Elevation	185–330 m
Slope	2–60%
Water table depth	203 cm
Aspect	Aspect is not a significant factor

Climatic features

Clayey Upland PESD is extremely widely distributed all throughout the MLRA. The annual average precipitation ranges from 29-33 inches, with a range of 56-167 inches of annual average snowfall (PRISM, 1981-2010). The annual average minimum temperature ranges from 29-36oF, and the maximum temperature ranges from 46-52oF (PRISM, 1981-2010). The length of the freeze-free period ranges from 156 to 194 days, with an average of 171 days (Table 2). The frost-free period ranges from 130-166 days, with an average of 144 days (Table 2). With such a wide spread, this PESD has the widest ranges for climatic features throughout the MLRA.

Table 3. Representative climatic features

Frost-free period (characteristic range)	84-113 days
Freeze-free period (characteristic range)	119-137 days
Precipitation total (characteristic range)	787-813 mm

Frost-free period (actual range)	70-114 days
Freeze-free period (actual range)	108-138 days
Precipitation total (actual range)	762-838 mm
Frost-free period (average)	97 days
Freeze-free period (average)	127 days
Precipitation total (average)	787 mm

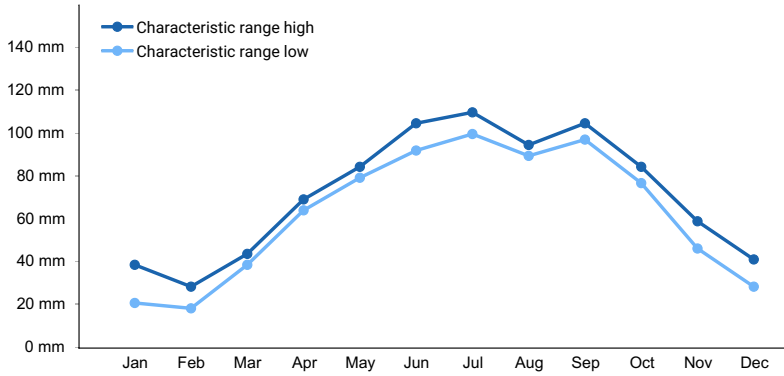


Figure 1. Monthly precipitation range

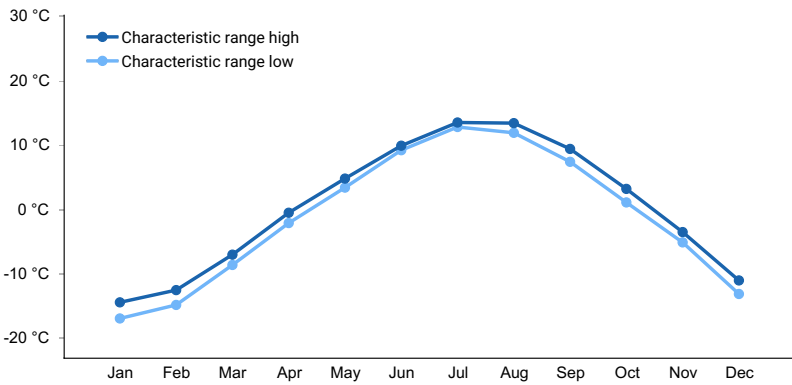


Figure 2. Monthly minimum temperature range

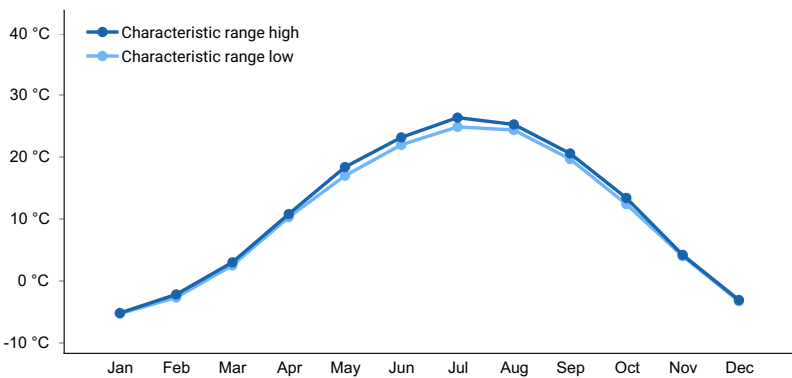


Figure 3. Monthly maximum temperature range

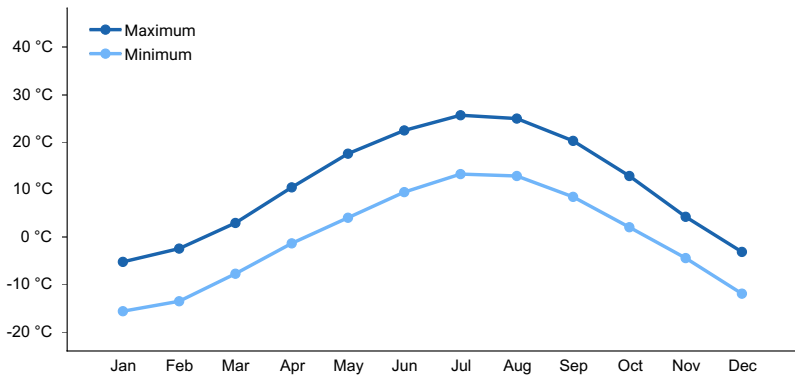


Figure 4. Monthly average minimum and maximum temperature

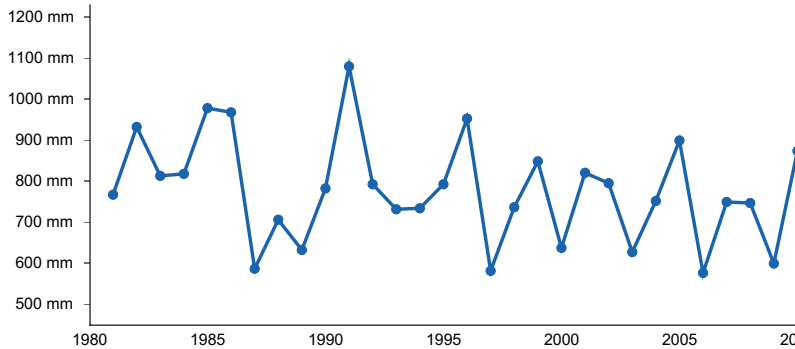


Figure 5. Annual precipitation pattern

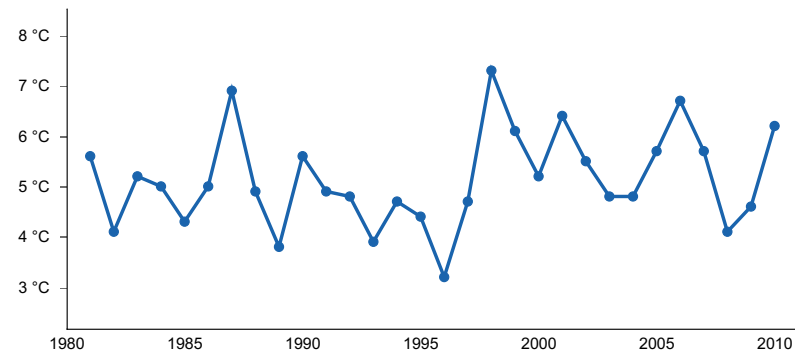


Figure 6. Annual average temperature pattern

Climate stations used

- (1) ASHLAND KENNEDY MEM AP [USW00094929], Ashland, WI
- (2) ASHLAND EXP FARM [USC00470349], Ashland, WI
- (3) ASHLAND 3S [USC00470347], Ashland, WI
- (4) BAYFIELD 6 N [USC00470603], Bayfield, WI
- (5) MADELINE ISLAND [USC00474953], La Pointe, WI
- (6) FOXBORO [USC00472889], Foxboro, WI
- (7) SUPERIOR [USC00478349], Superior, WI

Influencing water features

Water is received primarily through precipitation. Water is lost from the site primarily through runoff.

Permeability of the soil ranges from impermeable to very slow. Runoff potential is high to very high, but may be negligible to medium on low slope areas where there is a sandy or loamy mantle over the clay. The hydrologic group of this site is predominantly D, but where there is a sandy or loamy mantle over the clayey deposits the hydrologic group is A or C.

Enough water will percolate into some soil areas that will result in a perched seasonally high water table (episaturation) at a depth of 0 to 122 cm that may occur during any month, but will range to greater than 152 cm under dry conditions. Other soil areas will not exhibit any significant saturation at any depth for any significant period. Water that percolates into the soil is generally lost through plant uptake and evapotranspiration. Because of the permeability of the soil, there is very little to no ground water recharge.

Soil features

The soils of this site are represented by the Amnicon, Anton, Cornucopia, Kellogg, Manistee, Miskoaki, Odanah, Portwing, Sanborg, and Superior soil series. These soils are predominantly classified as Glossudalfs (Amnicon, Anton, Cornucopia, Miskoaki, Odanah, Portwing, and Sanborg), but include sites that are Haplorthods (Kellogg, Manistee, and Superior).

This ecological site is characterized by very deep, moderately well to well drained soils formed in clayey till or glaciolacustrine deposits (Amnicon, Anton, Cornucopia, Miskoaki, Odanah, Portwing, and Sanborg). Some areas include soil formed in a sandy glaciofluvial mantle over the clayey deposits (Kellogg and Manistee), while in other areas the soil formed in a loamy glaciofluvial mantle over the clayey deposits (Superior).

The average gravel content within the soil can be as much as 7 percent, while the average content of cobbles and stones can be as much as 1 percent. Soil reaction (pH) in the upper 100 cm ranges from very strongly acid to strongly alkaline. Carbonates can be as shallow as 13 cm below the surface.

Table 4. Representative soil features

Parent material	(1) Glaciolacustrine deposits (2) Glaciofluvial deposits
Surface texture	(1) Clay loam (2) Silty clay loam (3) Silt loam (4) Sandy loam (5) Sand
Drainage class	Moderately well drained to well drained
Permeability class	Very slow
Soil depth	203 cm
Available water capacity (0-152.4cm)	8.79–13.08 cm
Calcium carbonate equivalent (12.7-96.5cm)	3–18%
Soil reaction (1:1 water) (0-101.6cm)	4.6–8.7
Subsurface fragment volume ≤3" (0-101.6cm)	1–7%
Subsurface fragment volume >3" (0-101.6cm)	0–1%

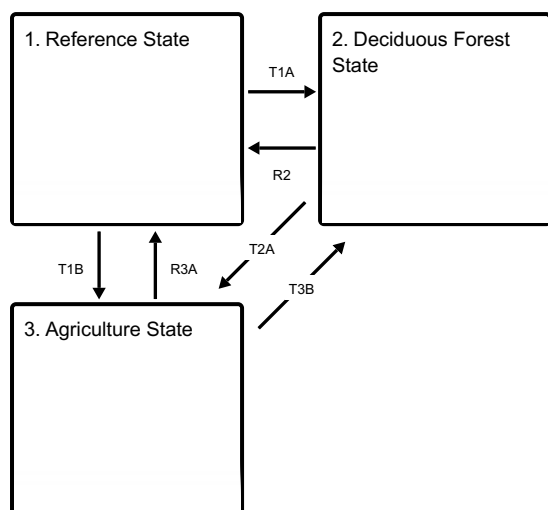
Ecological dynamics

Because of relatively poorly drained soils historic fire disturbance has likely been less frequent and less severe than on the better drained sites. This is evident by the presence (historic and current) of shade-tolerant and fire sensitive species such as red maple, balsam fir and white spruce. Aspen stands are common in current communities, but they are largely the result of fires associated with past logging. Red maple and balsam fir are the most obvious succeeding species, but white pine and white spruce may also become more important in the future as seed source availability increases. Although the shade-tolerant sugar maple occurs sporadically in some stands its competitive ability is reduced by excessive soil moisture and relatively low nutrient availability. For these reasons it is likely to remain only as a sporadic associate rather than the dominant component of mature forest communities as is

typically the case on all mesic sites throughout northern Wisconsin.

State and transition model

Ecosystem states



T1A - Stand replacing disturbance that includes fire.

T1B - Removal of forest cover and tilling for agricultural crop production

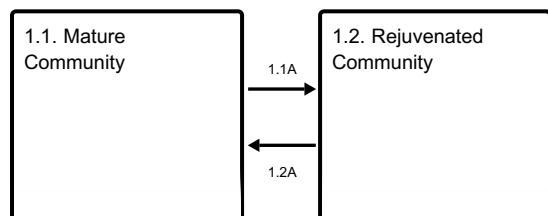
R2 - Deciduous forest community is slowly invaded by conifers.

T2A - Removal of forest cover and tilling for agricultural crop production

R3A - Cessation of agricultural practices leads to natural reforestation, or site is replanted.

T3B - Cessation of agricultural practices leads to natural reforestation, or site is replanted

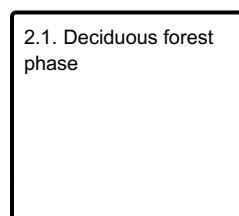
State 1 submodel, plant communities



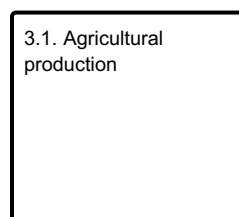
1.1A - Blow-down, severe ice storm, or large-scale mortality in overstory.

1.2A - Advanced regeneration response to canopy disturbance.

State 2 submodel, plant communities



State 3 submodel, plant communities



State 1

Reference State

Reference state is a forest community dominated by mixed conifers, principally balsam fir (*Abies balsamea*) and white spruce (*Picea glauca*) and scattered individuals of northern white cedar (*Thuja occidentalis*, or white pine (*Pinus strobus*), often with admixture of several deciduous species, most often trembling aspen (*Populus tremuloides*), paper birch (*Betula papyrifera*), or red maple (*Acer rubrum*). Understory vegetation, both shrub and herb layers, is well developed and diverse. Principle shrubs include beaked hazelnut (*Corylus cornuta*), speckled alder (*Alnus incana*) and red-osier dogwood (*Cornus stolonifera*). Herb layer typically is dominated by bracken fern (*Pteridium aquilinum*) and big-leaf aster (*Aster macrophyllum*). Other common species include wild strawberry (*Fragaria virginiana*), wild sarsaparilla (*Aralia nudicaulis*), bunchberry (*Cornus Canadensis*), snakeroot (*Sanicula marilandica*) and horsetails (*Equisitum* spp.). Depending on history of disturbance, two distinct community phases can be recognized.

Community 1.1 Mature Community

In the absence of stand replacing disturbance (period of 60-80 years) this community is dominated entirely by conifers, or it contains an admixture of old and decaying stems of aspen, and/or paper birch. This mixture is a result of typical succession process of conifer invasion of pioneer aspen-birch stands. In some areas, white pine, northern red cedar, or red maple are common associates. The tree reproduction layer is dominated by balsam fir, with lesser abundance of white spruce and/or red maple. The density of the reproduction is strongly dependent on the degree of canopy openings resulting from natural mortality, or small-scale disturbance by wind and ice storms. The shrub and herb layers also depend on the degree of canopy opening. The dominant shrub typically is beaked hazel (*Corylus cornuta*). Common associates are speckled alder (*Alnus incana*), red osier dogwood (*Cornus stolonifera*) and wild rose (*Rosa* spp.). The herb layer often is well developed and species rich. Bracken fern (*Pteridium aquilinum*) and large-leaved aster (*Aster macrophyllum*) typically are most abundant herbs. Other common species include wild strawberry (*Fragaria* spp.), wild sarsaparilla (*Aralia nudicaulis*), bunchberry (*Cornus Canadensis*), and horsetails (*Equisitum* spp.).

Community 1.2 Rejuvenated Community





Disturbance described in 1.1A typically removes some over-mature trees, especially old aspen and birch, from the overstory and releases advanced regeneration of balsam fir and white spruce and leads to community dominated by these species. Some presence of red maple and white pine may also result under favorable conditions, but trembling aspen and paper birch regeneration typically is not successful if disturbances do not include fire.

Pathway 1.1A
Community 1.1 to 1.2

A major canopy disturbance. Blow-down, severe ice storm, or large-scale mortality in overstory due to old age.

Pathway 1.2A
Community 1.2 to 1.1

A long period without major canopy disturbances again leads to mature conifer community, similar to community phase 1.1, but without significant presence of aspen and birch.

State 2
Deciduous Forest State

Pure, or mixed, aspen – paper birch community replaces the reference state community 1.1. If seed source is present, red maple readily becomes member of this community.

Community 2.1
Deciduous forest phase



This phase is composed of pure or mixed aspen and/or paper birch. Red maple may be present as well if the seed source is available.

State 3

Agriculture State

On clayey soils in MLRA 92 the most common agricultural activity is cultivation of hay.

Community 3.1

Agricultural production

This phase is most commonly in hay cultivation.

Transition T1A

State 1 to 2

Stand replacing disturbance that may include blow-down or ice storm, but must include fire to eliminate slash and competing vegetation and expose mineral soil to allow aspen and/or paper birch to colonize the site by seed. Alternatively, if the disrupted reference state community included aspen, the species may become re-established by vegetative means, which typically is more successful than colonization by seed.

Transition T1B

State 1 to 3

Removal of forest cover and tilling for agricultural crop production.

Restoration pathway R2

State 2 to 1

Deciduous forest community is slowly invaded by conifers (balsam fir, white spruce, black spruce, white pine, white cedar) and red maple.

Transition T2A

State 2 to 3

Removal of forest cover and tilling for agricultural crop production.

Restoration pathway R3A

State 3 to 1

Cessation of agricultural practices leads to natural reforestation, or site is replanted.

Transition T3B

State 3 to 2

Cessation of agricultural practices leads to natural reforestation, or site is replanted.

Additional community tables

Other references

Cleland, D.T.; Avers, P.E.; McNab, W.H.; Jensen, M.E.; Bailey, R.G., King, T.; Russell, W.E. 1997. National Hierarchical Framework of Ecological Units. Published in, Boyce, M. S.; Haney, A., ed. 1997. Ecosystem Management Applications for Sustainable Forest and Wildlife Resources. Yale University Press, New Haven, CT. pp. 181-200.

County Soil Surveys from Douglas, Bayfield, and Ashland Counties.

Curtis, J.T. 1959. Vegetation of Wisconsin: an ordination of plant communities. University of Wisconsin Press, Madison. 657 pp.

- Davis, R.B. 2016. Bogs and Fens, A Guide to the Peatland Plants of Northeastern United States and Adjacent Canada. University Press of New England, Hanover and London. 296 pp.
- Finley, R. 1976. Original vegetation of Wisconsin. Map compiled from U.S. General Land Office notes. U.S. Forest Service, North Central Forest Experiment Station, St. Paul, Minnesota.
- Hvizdak, David. Personal knowledge and field experience.
- Jahnke, J. and Gienccke, A. 2002. MLRA 92 Clay Till Field Investigations. Summary of field day investigations by Region 10 Soil Data Quality Specialists.
- NatureServe. 2018. International Ecological Classification Standard: Terrestrial Ecological Classifications. NatureServe Central Databases. Arlington, VA. U.S.A. Data current as of 28 August 2018.
- Kotar, J. 1986. Soil – Habitat Type relationships in Michigan and Wisconsin. *J. For. and Water Cons.* 41(5): 348-350.
- Kotar, J., J.A. Kovach and G. Brand. 1999. Analysis of the 1996 Wisconsin Forest Statistics by Habitat Type. U.S.D.A. For. Serv. N.C. Res. Stn. Gen. Tech. Rept. NC-207.
- Kotar, J., J. A. Kovach, and T. L. Burger. 2002. A Guide to Forest Communities and Habitat Types of Northern Wisconsin. Second edition. University of Wisconsin-Madison, Department of Forest Ecology and Management, Madison.
- Kotar, J., and T. L. Burger. 2017. Wetland Forest Habitat Type Classification System for Northern Wisconsin: A Guide for Land Managers and landowners. Wisconsin Department of Natural Resources, PUB-FR-627 2017, Madison.
- Martin, L. 1965. The physical geography of Wisconsin. Third edition. The University of Wisconsin Press, Madison.
- McNab, W.H. and P.W. Avers. 1994. Ecological Subregions of the United States: Section Descriptions. USDA For. Serv. Pub. WO-WSA-5, Washington, D.C.
- Radeloff, V.C., D.J. Mladenoff, H.S. He and M.S. Boyce. 1999. Forest landscape change in Northwestern Wisconsin Pine Barrens from pre-European settlement to the present. *Can. J. For. Res.* 29: 1649-1659.
- Schulte, L.A., and D.J. Mladenoff. 2001. The original U.S. public land survey records: their use and limitations in reconstructing pre-European settlement vegetation. *Journal of Forestry* 99:5–10.
- Schulte, L.A., and D.J. Mladenoff. 2005. Severe wind and fire regimes in northern forests: historical variability at the regional scale. *Ecology* 86(2):431–445.
- Soil Survey Staff. Input based on personal experience. Tim Miland, Scott Eversoll, Ryan Bevernitz, and Jason Nemecek.
- Stearns, F. W. 1949. Ninety years change in a northern hardwood forest in Wisconsin. *Ecology*, 30: 350-58.
- United States Department of Agriculture, Forest Service. 1989. Proceedings – Land Classification Based on Vegetation: Applications for Management. Gen. Tech. Report INT-527.
- United States Department of Agriculture, Forest Service. 1990. Silvics of North America, Vol. 1, Hardwoods. Agricultural Handbook 654, Washington, D.C.
- United States Department of Agriculture, Forest Service. 1990. Silvics of North America, Vol. 2, Conifers. Agricultural Handbook 654, Washington, D.C.
- United States Department of Agriculture, Natural Resources Conservation Service. 2006. Land Resource and Major

Land Resource Areas of the United States, the Caribbean, and the Pacific Basin. U.S. Department of Agriculture Handbook 296.

United States Department of Agriculture, Natural Resources Conservation Service. 2008. Hydrogeomorphic Wetland Classification System: An Overview and Modification to Better Meet the Needs of the Natural Resources Conservation Service. Technical Note No. 190-8-76. Washington D.C.

Wilde, S.A. 1933. The relation of soil and forest vegetation of the Lake States Region. Ecology 14: 94-105.

Wilde, S.A. 1976. Woodlands of Wisconsin. University of Wisconsin Cooperative Extension, Pub. G2780, 150 pp.

Wisconsin Department of Natural Resources. 2015. The ecological landscapes of Wisconsin: An assessment of ecological resources and a guide to planning sustainable management. Wisconsin Department of Natural Resources, PUB-SS-1131 2015, Madison.

Contributors

Jacob Prater, Associate Professor at University of Wisconsin Stevens Point

John Kotar, Ecological Specialist, independent contract

Bryant Scharenbroch, Assistant Professor at University of Wisconsin Stevens Point

Approval

Chris Tecklenburg, 4/09/2020

Acknowledgments

Contact for Lead Authors: Jacob Prater (jprater@uwsp.edu) Associate Professor at University of Wisconsin Stevens Point, John Kotar (jkotar@wsic.edu) Ecological Specialist, independent contract, and Bryant Scharenbroch Assistant Professor at University of Wisconsin Stevens Point

Rangeland health reference sheet

Interpreting Indicators of Rangeland Health is a qualitative assessment protocol used to determine ecosystem condition based on benchmark characteristics described in the Reference Sheet. A suite of 17 (or more) indicators are typically considered in an assessment. The ecological site(s) representative of an assessment location must be known prior to applying the protocol and must be verified based on soils and climate. Current plant community cannot be used to identify the ecological site.

Author(s)/participant(s)	
Contact for lead author	
Date	11/13/2024
Approved by	Chris Tecklenburg
Approval date	
Composition (Indicators 10 and 12) based on	Annual Production

Indicators

1. **Number and extent of rills:**

2. **Presence of water flow patterns:**

-
3. **Number and height of erosional pedestals or terracettes:**
-
4. **Bare ground from Ecological Site Description or other studies (rock, litter, lichen, moss, plant canopy are not bare ground):**
-
5. **Number of gullies and erosion associated with gullies:**
-
6. **Extent of wind scoured, blowouts and/or depositional areas:**
-
7. **Amount of litter movement (describe size and distance expected to travel):**
-
8. **Soil surface (top few mm) resistance to erosion (stability values are averages - most sites will show a range of values):**
-
9. **Soil surface structure and SOM content (include type of structure and A-horizon color and thickness):**
-
10. **Effect of community phase composition (relative proportion of different functional groups) and spatial distribution on infiltration and runoff:**
-
11. **Presence and thickness of compaction layer (usually none; describe soil profile features which may be mistaken for compaction on this site):**
-
12. **Functional/Structural Groups (list in order of descending dominance by above-ground annual-production or live foliar cover using symbols: >>, >, = to indicate much greater than, greater than, and equal to):**
- Dominant:
- Sub-dominant:
- Other:
- Additional:
-
13. **Amount of plant mortality and decadence (include which functional groups are expected to show mortality or decadence):**
-
14. **Average percent litter cover (%) and depth (in):**

15. **Expected annual annual-production (this is TOTAL above-ground annual-production, not just forage annual-production):**

16. **Potential invasive (including noxious) species (native and non-native). List species which BOTH characterize degraded states and have the potential to become a dominant or co-dominant species on the ecological site if their future establishment and growth is not actively controlled by management interventions. Species that become dominant for only one to several years (e.g., short-term response to drought or wildfire) are not invasive plants. Note that unlike other indicators, we are describing what is NOT expected in the reference state for the ecological site:**

17. **Perennial plant reproductive capability:**
