

# Ecological site R102DY010SD

## Loamy

Last updated: 8/14/2024  
Accessed: 11/21/2024

---

### General information

**Provisional.** A provisional ecological site description has undergone quality control and quality assurance review. It contains a working state and transition model and enough information to identify the ecological site.

### MLRA notes

Major Land Resource Area (MLRA): 102D–Prairie Coteau

This area makes up about 7,867 square miles (20,375 square kilometers), consisting mostly of nearly level to undulating till plains with potholes and moraines. Elevation ranges from 1,150 to 2,130 feet (350 to 650 meters). The average annual precipitation is 22 to 29 inches (559 to 734 millimeters). The average annual temperature is 42 to 45 degrees F (6 to 7 degrees C). The dominant soil order in this MLRA is Mollisols. The soils in this area dominantly have a frigid temperature regime, and an aquic or udic moisture regime. They are generally very deep and loamy. Soils range from well drained to very poorly drained. Parent materials are dominantly fine-loamy till to clayey material, with smaller amounts of outwash, glaciofluvial deposits, eolian deposits, alluvium, and, to a lesser extent, loess and organic materials.

### Classification relationships

\*Fenneman (1916) Physiographic Regions\*

Division - Interior Plains

East:

Province - Central Lowland

Section - Western Lake / Dissected Till Plains (12b/12e)

\*USFS (2007) Ecoregions\*

Domain - Humid Temperate

Division - Prairie

Province - Prairie Parkland (Temperate)

Section - North-Central Glaciated Plains (251B)

\*EPA Ecoregions (Omernik 1997)\*

I - Great Plains (9)

II - Temperate Prairies (9.2)

III - Aspen Parkland/Northern Glaciated Plains (9.2.1)

### Ecological site concept

The Loamy ecological site occurs on upland areas. Soils are well drained and have less than 40 percent clay in the surface and/or subsoil. The surface and subsoil textures typically are loam, silt loam, silty clay loam, clay loam, sandy clay loam, and very fine sandy loam. Some soils are underlain with sand and/or gravel at about two to three feet in depth. In some areas the surface layer may consist of stony to extremely stony. Slopes can range from 0 to 40 percent. Vegetation in the Reference State includes Big bluestem, needlegrasses, gramas, and wheatgrasses. Forbs include goldenrods, cudweed sagewort, heath aster, western yarrow, and western ragweed. Non-native grasses such as Kentucky bluegrass and smooth brome may invade the site due to changes in disturbance regime.

## Associated sites

R102DY012SD	<b>Thin Upland</b> These sites occur on uplands. Soils are well drained and will effervesce with acid at or near the surface.
R102DY020SD	<b>Loamy Overflow</b> These sites occur in upland swales. Soils are moderately well drained which have water flow into and over/through the site.

## Similar sites

R102DY020SD	<b>Loamy Overflow</b> The Loamy Overflow site occurs in upland swales. Soils are moderately well drained which have water flow into and over/through the site. A Loamy Overflow site will have more big bluestem and higher production than a Loamy site.
R102DY011SD	<b>Clayey</b> The Clayey site is in a similar landscape position, but the soils have greater than 40 percent clay in the surface and/or subsoil. A Clayey site will have more green needlegrass and less big bluestem than a Loamy site.

Table 1. Dominant plant species

Tree	Not specified
Shrub	Not specified
Herbaceous	(1) <i>Andropogon gerardii</i> (2) <i>Nassella viridula</i>

## Physiographic features

This site occurs on upland plains and moraines.

Table 2. Representative physiographic features

Landforms	(1) Upland > Plain (2) Upland > Moraine
Runoff class	Negligible to high
Flooding frequency	None
Ponding frequency	None
Elevation	305–640 m
Slope	1–9%
Water table depth	127–203 cm
Aspect	Aspect is not a significant factor

## Climatic features

The average annual precipitation is 22 to 28 inches. Half or more of the precipitation falls during the growing season. Rainfall typically occurs during high-intensity, convective thunderstorms in summer. In the western part of the MLRA, rainfall is less abundant and not always adequate for full maturation of crops. Precipitation in winter is typically snow. The average annual temperature is 42 to 45 degrees F. The freeze-free period averages 142 days and ranges from 131 to 150 days.

Table 3. Representative climatic features

Frost-free period (characteristic range)	114-127 days
Freeze-free period (characteristic range)	138-149 days

Precipitation total (characteristic range)	610-686 mm
Frost-free period (actual range)	110-131 days
Freeze-free period (actual range)	131-151 days
Precipitation total (actual range)	559-711 mm
Frost-free period (average)	121 days
Freeze-free period (average)	143 days
Precipitation total (average)	635 mm

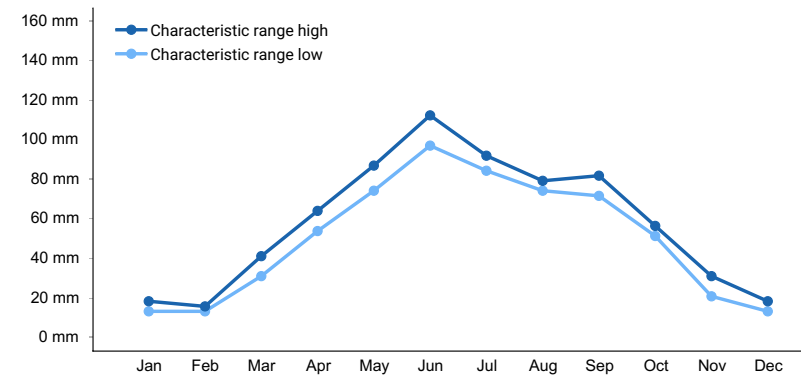


Figure 1. Monthly precipitation range

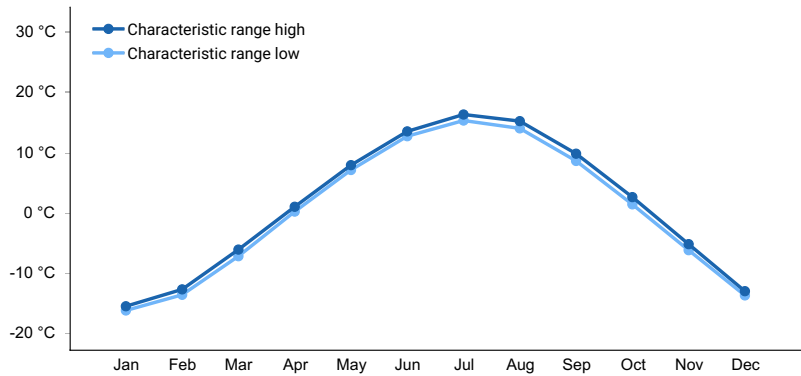


Figure 2. Monthly minimum temperature range

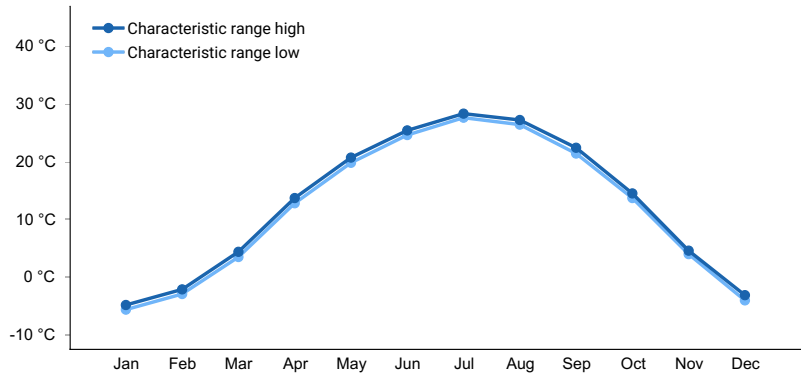
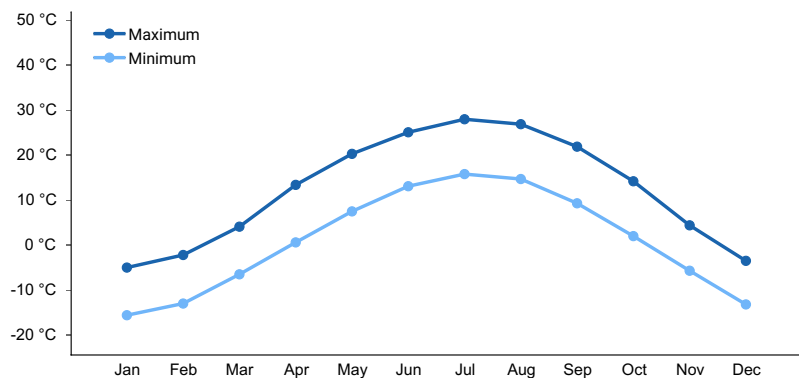
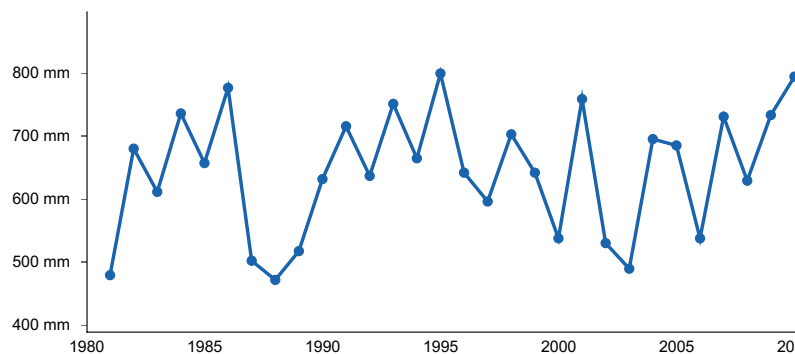


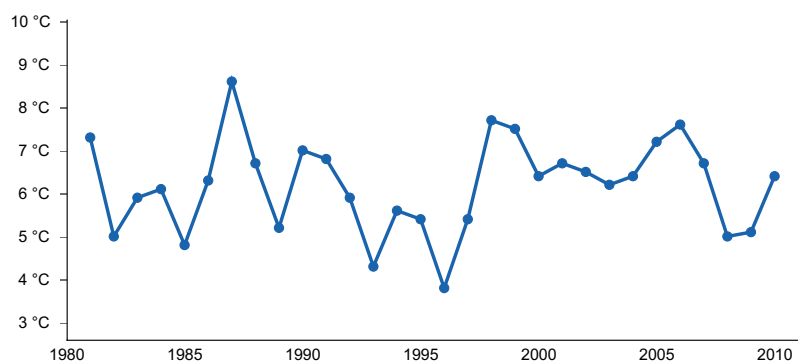
Figure 3. Monthly maximum temperature range



**Figure 4. Monthly average minimum and maximum temperature**



**Figure 5. Annual precipitation pattern**



**Figure 6. Annual average temperature pattern**

## Climate stations used

- (1) WAUBAY NWR [USC00398980], Waubay, SD
- (2) WEBSTER [USC00399004], Webster, SD
- (3) WATERTOWN RGNL AP [USW00014946], Watertown, SD
- (4) WATERTOWN 1W [USC00398930], Watertown, SD
- (5) ARLINGTON 1 W [USC00390281], Arlington, SD
- (6) BROOKINGS 2 NE [USC00391076], Brookings, SD
- (7) CLEAR LAKE [USC00391777], Clear Lake, SD
- (8) CASTLEWOOD [USC00391519], Castlewood, SD
- (9) ASTORIA 4S [USC00390422], White, SD
- (10) TYLER [USC00218429], Tyler, MN

## Influencing water features

No wetland features are associated with this site.

## Soil features

Soils are formed in till and loess over till. Surface textures are loam, silty clay loam, and silt loam. Soils are well drained.

**Table 4. Representative soil features**

Parent material	(1) Till (2) Loess
Surface texture	(1) Loam (2) Silty clay loam (3) Silt loam
Drainage class	Well drained
Permeability class	Moderately rapid
Soil depth	51–203 cm
Surface fragment cover ≤3"	0%
Surface fragment cover >3"	0%
Available water capacity (0-101.6cm)	17.27–19.56 cm
Soil reaction (1:1 water) (0-25.4cm)	6.1–7.8
Subsurface fragment volume ≤3" (0-152.4cm)	1–4%
Subsurface fragment volume >3" (0-152.4cm)	0–1%

## Ecological dynamics

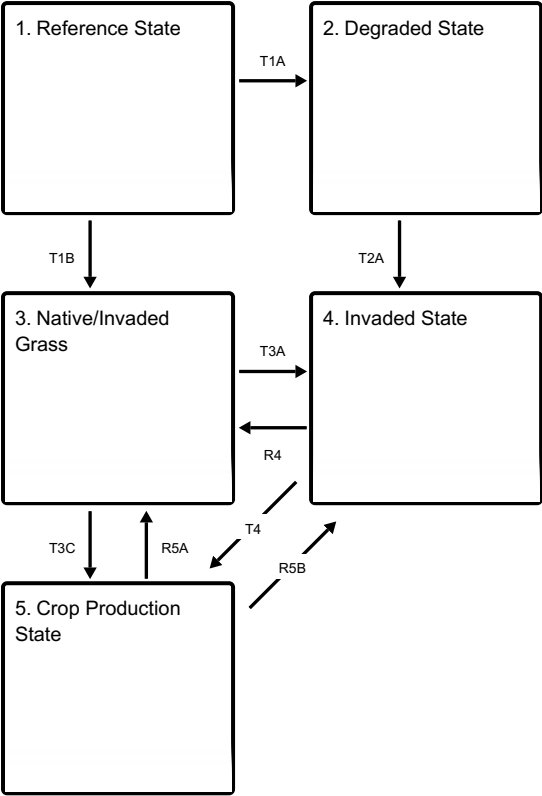
The site which is located in the Prairie Pothole Region developed under Northern Great Plains climatic conditions and included natural influence of large herding herbivores and occasional fire. Changes will occur in the plant communities due to weather fluctuations and/or management actions. Under adverse impacts, a relatively rapid decline in vegetative vigor and composition can occur. Under favorable conditions the site has the potential to resemble the Reference State. Interpretations for this site are based primarily on the 1.1 Big Bluestem-Green Needlegrass Plant Community Phase. This community phase and the Reference State have been determined by study of rangeland relic areas, areas protected from excessive disturbance, and areas under long-term rotational grazing regimes. Trends in plant community dynamics ranging from heavily grazed to lightly grazed areas, seasonal use pastures, and historical accounts also have been considered. Plant community phases, states, transitional pathways, and thresholds have been determined through similar studies and experience.

This ecological site (ES) has been grazed by domestic livestock since they have been introduced into the area. The introduction of domestic livestock and the use of fencing and reliable water sources have changed the ecological dynamics of this site. Heavy continuous grazing without adequate recovery periods following each grazing occurrence causes departure from the 3.1 Big Bluestem- Green Needlegrass Plant Community Phase. Little bluestem (*Schizachyrium scoparium*), wheatgrass, sideoats grama, and blue grama will increase. Eventually, blue grama (*Bouteloua gracilis*), quackgrass (*Elymus repens*), and Kentucky bluegrass (*Poa pratensis*) may develop into a sod. Indiangrass (*Sorghastrum nutans*), big bluestem, porcupine grass (*Hesperostipa spartea*), green needlegrass, sideoats grama (*Bouteloua curtipendula*), and little bluestem will decrease in frequency and production. Extended periods of nonuse and/or lack of fire will result in excessive litter and a plant community dominated by cool-season grasses such as Kentucky bluegrass, smooth brome grass (*Bromus inermis*), and green needlegrass.

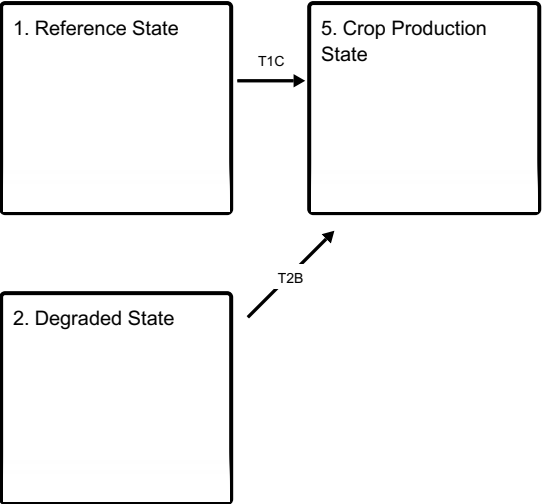
Following the state and transition diagram are narratives for each of the described states and community phases. These may not represent every possibility, but they are the most prevalent and repeatable states/community phases. The plant composition tables shown below have been developed from the best available knowledge at the time of this revision. As more data are collected, some of these community phases and/or states may be revised or removed, and new ones may be added. The main purpose for including the descriptions here is to capture the current knowledge and experience at the time of this revision.

State and transition model

Ecosystem states

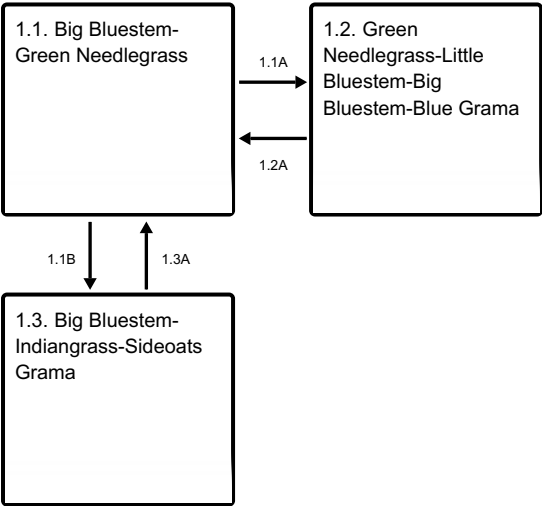


States 1, 5 and 2 (additional transitions)



- T1A - Heavy continuous grazing
- T1B - Heavy continuous grazing, non-use, no fire, invasion
- T1C - Tillage
- T2A - Abandonment, invasive encroachment, seeding of non-natives
- T2B - Tillage
- T3A - Non-use, no fire, heavy continuous grazing
- T3C - Tillage
- R4 - Long-term prescribed grazing, prescribed burning
- T4 - Tillage
- R5A - Seeding
- R5B - Seeding, abandonment of cropping

State 1 submodel, plant communities



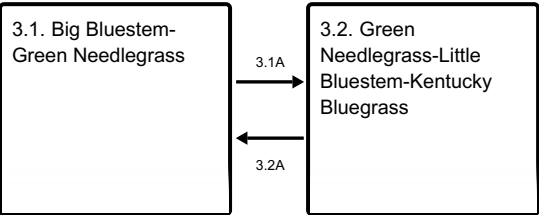
- 1.1A - Heavy continuous grazing

- 1.1B - Prescribed burning
- 1.2A - Prescribed grazing with recovery periods, prescribed burning
- 1.3A - Prescribed grazing with recovery periods, prescribed burning

State 2 submodel, plant communities

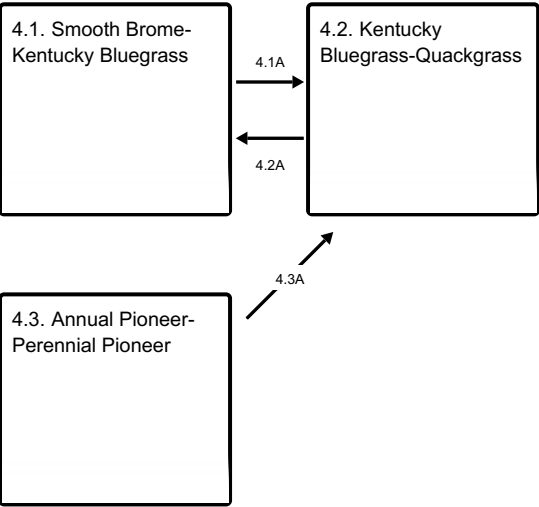


State 3 submodel, plant communities



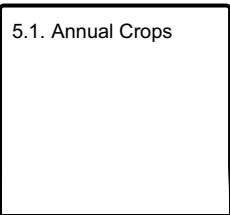
- 3.1A - Heavy continuous grazing
- 3.2A - Prescribed grazing with recovery periods

State 4 submodel, plant communities



- 4.1A - Heavy continuous grazing
- 4.2A - Prescribed grazing with recovery periods
- 4.3A - Time without disturbances

State 5 submodel, plant communities



State 1  
Reference State

The Reference State represents the natural range of variability that dominated the dynamics of this ecological site

(ES). This state was dominated by warm-season grasses, with cool-season grasses being subdominant. In pre-European times, the primary disturbance mechanisms for this site in the reference condition included periods of below and/or above average precipitation, periodic fire, and herbivory by insects and large ungulates. Timing of fires and herbivory coupled with weather events dictated the dynamics that occurred within the natural range of variability. In some locations, this site likely received relatively heavy grazing pressure. Tall warm-season grasses would have declined and cool-season bunchgrasses and short to mid-statured warm-season grasses would have increased. Today, a similar state, the Native/Invaded State (State 3) can be found on areas that are properly managed with grazing and/or prescribed burning and sometimes on areas receiving occasional short periods of rest.

### Dominant plant species

- leadplant (*Amorpha canescens*), shrub
- rose (*Rosa*), shrub
- snowberry (*Symphoricarpos*), shrub
- smooth sumac (*Rhus glabra*), shrub
- big bluestem (*Andropogon gerardii*), grass
- porcupinegrass (*Hesperostipa spartea*), grass
- little bluestem (*Schizachyrium scoparium*), grass
- slender wheatgrass (*Elymus trachycaulus*), grass
- sedge (*Carex*), grass
- blazing star (*Liatris*), other herbaceous
- scurfpea (*Psoraleidum*), other herbaceous
- white heath aster (*Symphyotrichum ericoides*), other herbaceous
- aromatic aster (*Symphyotrichum oblongifolium*), other herbaceous

## Community 1.1

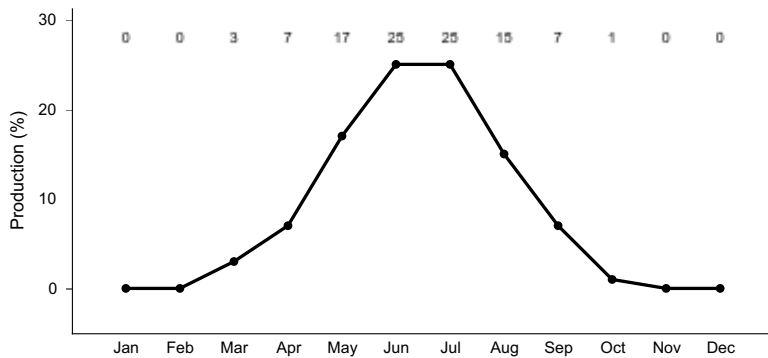
### Big Bluestem-Green Needlegrass

Interpretations are based primarily on the 1.1 Big Bluestem-Green Needlegrass Plant Community Phase (this is also considered to be climax). This plant community evolved with grazing by large herbivores, frequent surface fires, and periodic flooding events and is suited for grazing by domestic livestock. This plant community can be found on areas that are grazed and where the grazed plants receive adequate periods of rest during the growing season in order to recover. The potential vegetation was about 80 percent grasses or grass-like plants, 15 percent forbs, and 5 percent shrubs. The community was dominated by warm-season grasses, with cool-season grasses being subdominant. The major grasses included big bluestem, Indiangrass, porcupine grass, green needlegrass, and little bluestem. Other grass or grass-like species included switchgrass (*Panicum virgatum*), sideoats grama, slender wheatgrass, prairie dropseed (*Sporobolus heterolepis*), and sedges. This plant community was resilient and well adapted to the Northern Great Plains climatic conditions. The diversity in plant species allowed for high drought tolerance. This was a sustainable plant community in regards to site/soil stability, watershed function, and biologic integrity.

Table 5. Annual production by plant type

Plant Type	Low (Kg/Hectare)	Representative Value (Kg/Hectare)	High (Kg/Hectare)
Grass/Grasslike	2780	3335	3755
Forb	174	392	706
Shrub/Vine	73	196	359
<b>Total</b>	<b>3027</b>	<b>3923</b>	<b>4820</b>



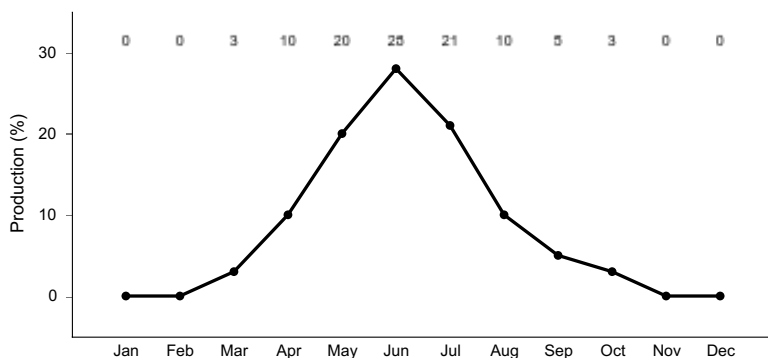


**Figure 8. Plant community growth curve (percent production by month).**  
SD0204, Rolling Till Prairie, warm-season dominant, cool-season subdominant.. Warm-season dominant, cool-season subdominant..

## Community 1.2

### Green Needlegrass-Little Bluestem-Big Bluestem-Blue Grama

This plant community evolved under heavy continuous grazing or from over utilization during extended drought periods. The potential plant community was made up of approximately 85 percent grasses and grass-like species, 10 percent forbs, and 5 percent shrubs. Dominant grasses included green needlegrass, little bluestem, big bluestem, and sideoats grama. Grasses of secondary importance included blue grama, western wheatgrass (*Pascopyrum smithii*), porcupine grass, Indiangrass, switchgrass, tall dropseed (*Sporobolus compositus*), prairie dropseed, slender wheatgrass (*Elymus trachycaulus*), and sedge (*Carex*). Forbs commonly found in this plant community included Canada goldenrod (*Solidago Canadensis*), cudweed sagewort (*Artemisia ludoviciana*), heath aster (*Symphotrichum ericoides*), scurfpea (*Psoraleidium*), stiff goldenrod (*Oligoneuron rigidum*), western ragweed (*Ambrosia psilostachya*), and western yarrow (*Achillea millefolium*). This plant community had similar plant composition to the 3.2 Green Needlegrass-Little Bluestem-Kentucky Bluegrass Plant Community Phase. The main difference is that this plant community phase did not have the presence of non-native invasive species such as Kentucky bluegrass and smooth brome grass. When compared to the 1.1 Big Bluestem-Green Needlegrass Plant Community Phase, green needlegrass and little bluestem increased. Production of tall warm-season grasses was reduced. This plant community was moderately resistant to change. The herbaceous species present were well adapted to grazing; however, species composition could be altered through long-term overgrazing. If the herbaceous component was intact, it tended to be resilient if the disturbance was not long-term. Most of the components of the ecological processes would have been functioning at optimum levels. However, the vigor and reproductive capability of the tall warm-season grasses would have been reduced due to grazing pressure or a combination of stressors. A reduction of this dominant functional group allowed for an increase in shorter-statured (and shallower rooted) species.



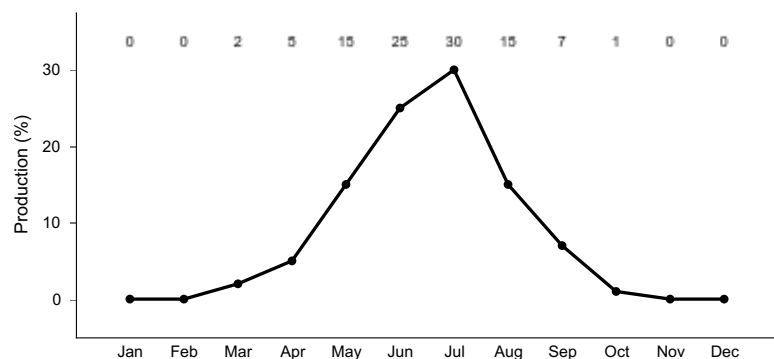
**Figure 9. Plant community growth curve (percent production by month).**  
SD0203, Rolling Till Prairie, cool-season/warm-season codominant.. Cool-season, warm-season codominant..

## Community 1.3

### Big Bluestem-Indiangrass-Sideoats Grama

This plant community was a result of fire occurring at relatively frequent intervals. This phase could have also resulted from a combination of grazing events immediately following early season fire (i.e., large ungulates attracted

to highly nutritious vegetative growth following a fire). These events would have caused a reduction in cool-season grasses and an increase in warm-season grasses. The warm-season grasses were more tolerant of shorter return intervals of fire and would have increased in vigor and production leading to a temporary shift to this phase. Needlegrasses would have decreased most significantly amongst the cool-season grasses. The potential vegetation was about 80 percent grasses or grass-like plants, 15 percent forbs, and 5 percent shrubs. The community was dominated by warm-season grasses. The major grasses included big bluestem, Indiangrass, switchgrass, sideoats grama, little bluestem, and prairie dropseed. Other grass or grass-like species included green needlegrass, porcupine grass, western wheatgrass, blue grama, slender wheatgrass, tall dropseed, and sedge. This plant community was not resistant to change and would have readily shifted back to the 1.1 Big Bluestem-Green Needlegrass Plant Community Phase with a return of more normal fire return intervals.



**Figure 10. Plant community growth curve (percent production by month). SD0205, Rolling Till Prairie, warm-season dominant.. Warm-season dominant..**

### **Pathway 1.1A** **Community 1.1 to 1.2**

Heavy continuous grazing which includes herbivory at moderate to heavy levels at the same time of year each year without adequate recovery periods, or during periods of below normal precipitation when grazing frequency and intensity increases on these sites due to limited forage availability on adjacent upland sites will shift this community to the 1.2 Green Needlegrass-Little Bluestem-Big Bluestem-Blue Grama Plant Community Phase.

### **Pathway 1.1B** **Community 1.1 to 1.3**

Prescribed Burning occurring at relatively frequent intervals (3 to 5 years), and occasional grazing events immediately following early season fire caused a reduction in cool-season grasses and an increase in warm-season grasses. The warm-season grasses were more tolerant of shorter return intervals of fire, and would increase in vigor and production leading to a temporary shift to the 1.3 Big Bluestem-Indiangrass-Sideoats Grama Plant Community Phase.

### **Pathway 1.2A** **Community 1.2 to 1.1**

Prescribed grazing, and/or prescribed burning returned to normal disturbance regime levels and frequencies or periodic light to moderate grazing possibly including periodic rest will convert this plant community to the 1.1 Big Bluestem-Green Needlegrass Plant Community Phase.

### **Pathway 1.3A** **Community 1.3 to 1.1**

Prescribed grazing (alternating season of use and providing adequate recovery periods) or periodic light to moderate grazing possibly including periodic rest and/or prescribed burning with late season fire or at infrequent intervals (greater than 5 years) will convert this plant community to the 1.1 Big Bluestem-Green Needlegrass Plant Community Phase.

## State 2

### Degraded State

This state is the result of heavy continuous grazing, and the absence of periodic fire due to fire suppression. This state is dominated by blue grama, buffalograss, and western wheatgrass. The blue grama and buffalograss can form a sod-like layer that effectively blocks introduction of other plants into the system. The western wheatgrass will occur on the outer edges and intermingled within the blue grama and buffalograss sod areas. Taller warm-season species will decline and a corresponding increase in short statured grass will occur. Once the threshold is crossed, a change in grazing management alone cannot restore the degraded state.

#### Dominant plant species

- blue grama (*Bouteloua gracilis*), grass
- buffalograss (*Bouteloua dactyloides*), grass
- western wheatgrass (*Pascopyrum smithii*), grass
- little bluestem (*Schizachyrium scoparium*), grass
- sedge (*Carex*), grass
- white sagebrush (*Artemisia ludoviciana*), other herbaceous
- western yarrow (*Achillea millefolium* var. *occidentalis*), other herbaceous

## Community 2.1

### Little Bluestem-Slender Wheatgrass-Blue Grama

This plant community evolved under heavy continuous season grazing or from over utilization during extended drought periods. The potential plant community was made up of approximately 85 percent grasses and grass-like species, 10 percent forbs, and 5 percent shrubs. Dominant grasses included little bluestem, western wheatgrass, sideoats grama, and blue grama. Grasses of secondary importance included big bluestem, switchgrass, green needlegrass, slender wheatgrass, tall dropseed, and sedge. Forbs commonly found in this plant community included cudweed sagewort, green sagewort, and western yarrow. When compared to the 1.1 Big Bluestem-Green Needlegrass Plant Community Phase, tall warm-season grasses were reduced, and the more grazing tolerant species such as blue grama, little bluestem, and sideoats grama were dominant on this plant community. With the exception of western wheatgrass, cool-season grasses decreased significantly. This vegetation state was very resistant to change, especially if the disturbance continued and the short-statured species such as blue grama increased. The herbaceous species present were well adapted to grazing. This plant community was less productive than other phases.

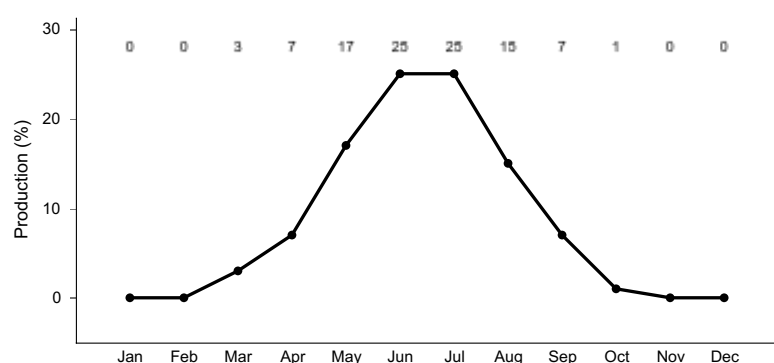


Figure 11. Plant community growth curve (percent production by month). SD0204, Rolling Till Prairie, warm-season dominant, cool-season subdominant.. Warm-season dominant, cool-season subdominant..

## State 3

### Native/Invaded Grass

This state represents the more common range of variability that exists with higher levels of grazing management but in the absence of periodic fire due to fire suppression. This state is dominated by cool- and warm-season grasses. It can be found on areas that are properly managed with grazing and/or prescribed burning, and sometimes on areas receiving occasional short periods of rest. Taller warm-season species can decline and a corresponding increase in short statured grass will occur.

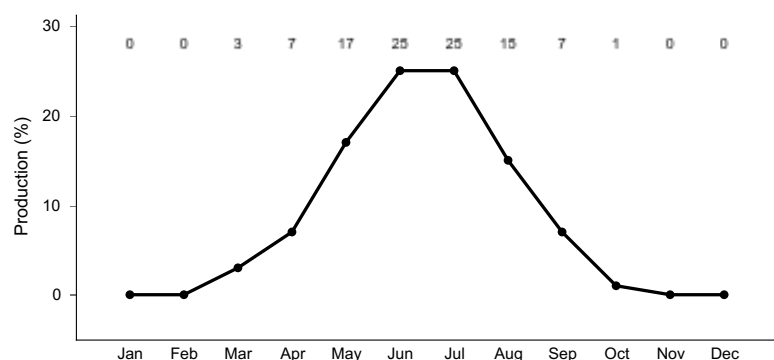
## Dominant plant species

- smooth sumac (*Rhus glabra*), shrub
- rose (*Rosa*), shrub
- snowberry (*Symphoricarpos*), shrub
- prairie sagewort (*Artemisia frigida*), shrub
- green needlegrass (*Nassella viridula*), grass
- little bluestem (*Schizachyrium scoparium*), grass
- big bluestem (*Andropogon gerardii*), grass
- blue grama (*Bouteloua gracilis*), grass
- sedge (*Carex*), grass
- Kentucky bluegrass (*Poa pratensis*), grass
- Canada goldenrod (*Solidago canadensis*), other herbaceous
- white heath aster (*Symphyotrichum ericoides*), other herbaceous
- white sagebrush (*Artemisia ludoviciana*), other herbaceous
- Canada thistle (*Cirsium arvense*), other herbaceous

## Community 3.1

### Big Bluestem-Green Needlegrass

This plant community phase is similar to the 1.1 Big Bluestem-Green Needlegrass Plant Community Phase, but it also contains minor amounts of non-native invasive grass species such as Kentucky bluegrass and smooth brome grass (up to about 10 percent by air-dry weight). The potential vegetation is about 80 percent grasses or grass-like plants, 15 percent forbs, and 5 percent shrubs. This community is dominated by warm-season grasses, with cool-season grasses being subdominant. The major grasses include big bluestem, green needlegrass, Indiangrass, porcupine grass, and little bluestem. Other grass or grass-like species include switchgrass, sideoats grama, slender wheatgrass, prairie dropseed, and sedges. This plant community is resilient and well adapted to the Northern Great Plains climatic conditions. The diversity in plant species allows for high drought tolerance. This is a sustainable plant community in regards to site/soil stability, watershed function, and biologic integrity.



**Figure 12. Plant community growth curve (percent production by month).**  
SD0204, Rolling Till Prairie, warm-season dominant, cool-season subdominant.. Warm-season dominant, cool-season subdominant..

## Community 3.2

### Green Needlegrass-Little Bluestem-Kentucky Bluegrass

This plant community is a result of heavy continuous grazing or from over utilization during extended drought periods. The potential plant community is made up of approximately 85 percent grasses and grass-like species, 10 percent forbs, and 5 percent shrubs. Dominant grasses include green needlegrass, little bluestem, Kentucky bluegrass, big bluestem, and sideoats grama. Grasses of secondary importance include blue grama, western wheatgrass, porcupine grass, Indiangrass, switchgrass, tall dropseed, prairie dropseed, slender wheatgrass, and sedge. Forbs commonly found in this plant community include Canada goldenrod, cudweed sagewort, heath aster, scurfpea, stiff goldenrod, western ragweed, and western yarrow. When compared to the 1.1 Big Bluestem-Green Needlegrass Plant Community Phase, green needlegrass and little bluestem have increased. Production of tall warm-season grasses is reduced. This plant community is moderately resistant to change. The herbaceous species present are well adapted to grazing; however, species composition can be altered through long-term overgrazing. If the herbaceous component is intact, it tends to be resilient if the disturbance is not long-term. Most of the

components of the ecological processes are functioning at optimum levels. However, the vigor and reproductive capability of the tall warm-season grasses are reduced due to grazing pressure or a combination of stressors. A reduction of this dominant functional group allows for an increase in shorter-statured (and shallower rooted) species. The introduction of nonnative invasive species such as Kentucky bluegrass and smooth brome grass results in alterations to the soil profile. Organic matter levels tend to decrease and begin to be concentrated more in the surface layers and the structure will begin to be modified. These changes favor the shallow-rooted species and hasten their eventual dominance if steps are not taken to reduce these species.

Table 6. Annual production by plant type

Plant Type	Low (Kg/Hectare)	Representative Value (Kg/Hectare)	High (Kg/Hectare)
Grass/Grasslike	2074	2809	3503
Forb	140	235	359
Shrub/Vine	28	94	174
<b>Total</b>	<b>2242</b>	<b>3138</b>	<b>4036</b>

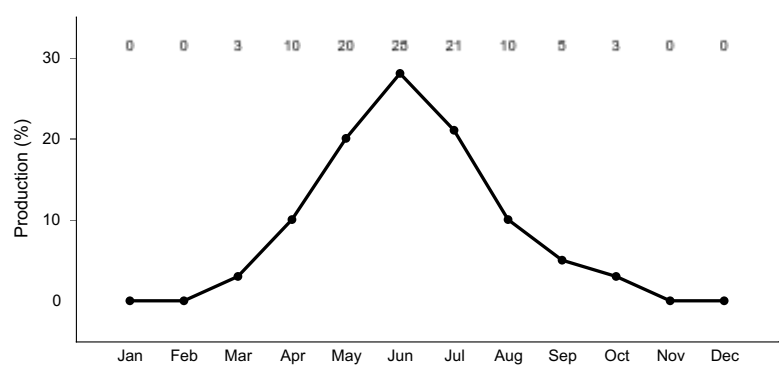


Figure 14. Plant community growth curve (percent production by month). SD0203, Rolling Till Prairie, cool-season/warm-season codominant.. Cool-season, warm-season codominant..

### Pathway 3.1A Community 3.1 to 3.2

Heavy continuous grazing which includes herbivory at moderate to heavy levels at the same time of year each year without adequate recovery periods, or during periods of below normal precipitation when grazing frequency and intensity increases on these sites due to limited forage availability on adjacent upland sites will shift this community to the 3.2 Green Needlegrass-Little Bluestem-Kentucky Bluegrass Plant Community Phase.

### Pathway 3.2A Community 3.2 to 3.1

Prescribed grazing (alternating season of use and providing adequate recovery periods) or periodic light to moderate grazing possibly including periodic rest will convert this plant community to the 3.1 Big Bluestem-Green Needlegrass Plant Community Phase.

#### Conservation practices

Prescribed Grazing

### State 4 Invaded State

This state is a result of encroachment mainly by invasive introduced cool-season grasses. The ecological processes are not functioning, especially the biotic processes and the hydrologic functions. The introduced cool-season grasses cause reduced infiltration and increased runoff. Preliminary studies would tend to indicate this threshold may exist when Kentucky bluegrass exceeds 30 percent of the plant community and native grasses represent less

than 40 percent of the plant community composition. The opportunity for high intensity spring burns is severely reduced by early green up and increased moisture and humidity at the soil surface and grazing pressure cannot cause a reduction in sodgrass dominance. Production is limited to the sod forming species. Infiltration continues to decrease and runoff increases and energy capture into the system is restricted to early season low producing species. Nutrient cycling is limited by root depth of the dominant species.

### Dominant plant species

- smooth sumac (*Rhus glabra*), shrub
- snowberry (*Symphoricarpos*), shrub
- prairie sagewort (*Artemisia frigida*), shrub
- smooth brome (*Bromus inermis*), grass
- Kentucky bluegrass (*Poa pratensis*), grass
- quackgrass (*Elymus repens*), grass
- white sagebrush (*Artemisia ludoviciana*), other herbaceous
- Canada goldenrod (*Solidago canadensis*), other herbaceous
- Canada thistle (*Cirsium arvense*), other herbaceous

## Community 4.1

### Smooth Brome-Kentucky Bluegrass

This plant community phase is a result of extended periods of nonuse and no fire or occasionally light levels of grazing over several years. It is characterized by dominance of smooth brome grass and to a lesser extent Kentucky bluegrass. The dominance is at times so complete that other species are difficult to find on the site. A thick duff layer also accumulates at or above the soil surface and eventually a thatch-mat layer may develop at the surface. Nutrient cycling is greatly reduced and native plants have great difficulty becoming established. When dominated by smooth brome grass, infiltration is moderately reduced and runoff is moderate. Production can be equal to or higher than the interpretive plant community. However, when dominated by Kentucky bluegrass, infiltration is greatly reduced and runoff is high. Production in this case will likely be significantly less. In either case, the period that palatability is high is relatively short, as these cool-season species mature rapidly. Energy capture is also reduced. The dominance of these introduced species has been shown to alter the biotic component of the soil, as well as, organic matter levels and eventually the soil structure. These alterations perpetuate the dominance of Kentucky bluegrass and smooth brome grass and tend to make establishment of native species extremely difficult.

Table 7. Annual production by plant type

Plant Type	Low (Kg/Hectare)	Representative Value (Kg/Hectare)	High (Kg/Hectare)
Grass/Grasslike	2494	3120	3643
Forb	163	359	639
Shrub/Vine	34	108	202
<b>Total</b>	<b>2691</b>	<b>3587</b>	<b>4484</b>

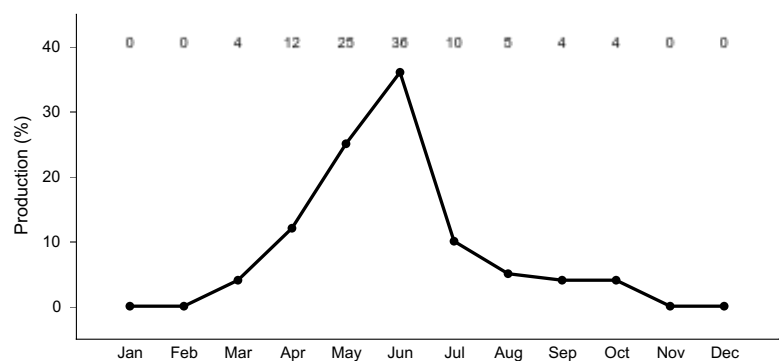


Figure 16. Plant community growth curve (percent production by month). SD0201, Rolling Till Prairie, cool-season dominant.. Cool-season dominant..

## Community 4.2

### Kentucky Bluegrass-Quackgrass

This plant community phase is a result of heavy, continuous seasonal grazing or heavy, continuous season-long grazing. It is characterized by a dominance of Kentucky bluegrass and quackgrass. The dominance is at times so complete that other species are difficult to find on the site. A relatively thick duff layer can sometimes accumulate at or above the soil surface and a thatch-mat layer often develops at the surface. Nutrient cycling is greatly reduced, and native plants have great difficulty becoming established. Infiltration is greatly reduced and runoff is high. Production will be significantly reduced when compared to the interpretive plant community. The period that palatability is high is relatively short as Kentucky bluegrass matures rapidly. Energy capture is also reduced. Biological activity in the soil is likely reduced significantly in this phase.

Table 8. Annual production by plant type

Plant Type	Low (Kg/Hectare)	Representative Value (Kg/Hectare)	High (Kg/Hectare)
Grass/Grasslike	1681	2158	2572
Forb	112	247	432
Shrub/Vine	—	62	135
Total	1793	2467	3139

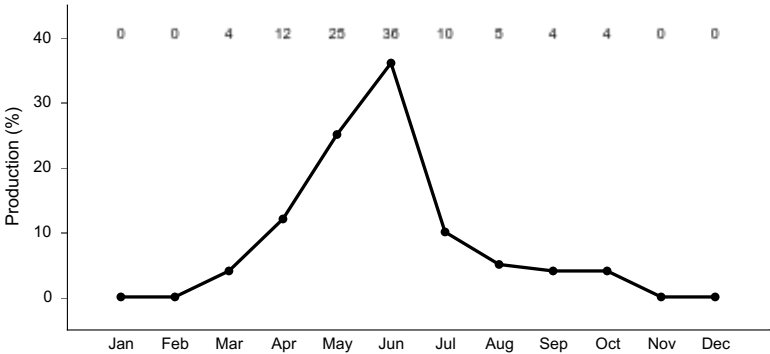


Figure 18. Plant community growth curve (percent production by month). SD0201, Rolling Till Prairie, cool-season dominant.. Cool-season dominant..

### Community 4.3 Annual Pioneer-Perennial Pioneer

This plant community developed under continuous heavy grazing or other excessive disturbances. The potential plant community is made up of approximately 40 to 80 percent grasses and grass-like species, 20 to 60 percent forbs, and 0 to 5 percent shrubs. The species present in this phase are highly variable but often include non-native invasive and/or early seral species. Plant diversity is low (plant richness may be high, but areas are often dominated by a few species). The ecological processes are difficult to restore because of the loss of plant diversity and overall soil disturbance. Soil erosion is potentially very high because of the bare ground and shallow rooted herbaceous plant community. Water runoff will increase and infiltration will decrease due to animal related soil compaction and loss of root mass due to low plant diversity and vigor. This plant community will require significant economic inputs and time to move towards another plant community. This movement is highly variable in its succession. This is due to the loss of diversity (including the loss of the seed bank), within the existing plant community, and the plant communities on adjacent sites. This community can be renovated to improve the production capability; however, if management changes are not made the vegetation could revert back to early seral species.

### Pathway 4.1A Community 4.1 to 4.2

Heavy continuous grazing which includes herbivory at moderate to heavy levels at the same time of year each year without adequate recovery periods, or during periods of below normal precipitation when grazing frequency and intensity increases on these sites due to limited forage availability on adjacent upland sites will shift this community to the 4.2 Kentucky Bluegrass-Quackgrass Plant Community Phase.

## **Pathway 4.2A**

### **Community 4.2 to 4.1**

Prescribed grazing (alternating season of use and providing adequate recovery periods) or periodic light to moderate grazing possibly including periodic rest will convert this plant community to the 4.1 Smooth Bromegrass-Kentucky Bluegrass Plant Community Phase.

#### **Conservation practices**

Prescribed Grazing
--------------------

## **Pathway 4.3A**

### **Community 4.3 to 4.2**

This community pathway occurs with the passage of time as successional processes take place and perennial plants gradually begin to establish on the site again. This pathway will lead to the 4.2 Kentucky Bluegrass-Quackgrass Plant Community Phase.

## **State 5**

### **Crop Production State**

This state is characterized by the production of annual crops using a variety of tillage and cropping systems along with management practices. Cropping on this site is enabled during years with drier than normal precipitation or with artificial drainage (surface or subsurface).

#### **Dominant plant species**

- corn (*Zea*), grass
- wheat (*Triticum*), grass
- soybean (*Glycine*), other herbaceous

## **Community 5.1**

### **Annual Crops**

This plant community developed with the use of a variety of tillage systems and cropping systems for the production of annual crops including corn, soybeans, wheat, sugar beet and a variety of other crops.

## **Transition T1A**

### **State 1 to 2**

Heavy continuous grazing (stocking levels well above carrying capacity for extended portions of the growing season, and often at the same time of year each year, typically beginning early in the season) will convert this plant community to the 2.1 Little Bluestem-Slender Wheatgrass-Blue Grama Sod Plant Community Phase within the Degraded State.

## **Transition T1B**

### **State 1 to 3**

Non-use and/or no surface fire for extended periods of time (typically for 10 or more years) causing litter levels to become high enough to reduce native grass vigor, diversity, and density, and/or heavy continuous grazing or invasion of non-native plant species will likely lead this state over a threshold resulting in the Native-Invaded State (State 3).

## **Transition T1C**

### **State 1 to 5**

Tillage will cause a shift over a threshold leading to the 5.1 Annual Crops Plant Community Phase within the Crop Production State (State 5).



## **Transition T2A**

### **State 2 to 4**

Encroachment of non-native invasive/noxious species, abandonment of cropping, or seeding of introduced and/or native improved varieties of forage species may lead this plant community phase over a threshold to the Invaded State (State 4) and more specifically to the 4.3 Annual/Pioneer, Non-native Perennial Plant Community Phase. In the case of a seeding, refer to the corresponding Forage Suitability Group (FSG) description for adapted species and expected production (production estimates in the FSG description may be unrealistically high due to the degraded condition of the site at this phase).

## **Transition T2B**

### **State 2 to 5**

Tillage will cause a shift over a threshold leading to the 5.1 Annual Crops Plant Community Phase within the Crop Production State (State 5).

## **Transition T3A**

### **State 3 to 4**

Non-use and/or no surface fire for extended periods of time (typically for 10 or more years) causing litter levels to become high enough to reduce native grass vigor, diversity, and density, will likely lead this state over a threshold leading to the 4.1 Smooth Bromegrass-Kentucky Bluegrass Community Phase within the Invaded State (State 4). Heavy continuous grazing (stocking levels well above carrying capacity for extended portions of the growing season and often at the same time of year each year), will likely lead this state over a threshold leading to the 4.2 Kentucky Bluegrass-Quackgrass Community Phase within the Invaded State (State 4). Grazing repeatedly in the early growing season can expedite this shift by causing mechanical disturbance due to trampling.

## **Transition T3C**

### **State 3 to 5**

Tillage will cause a shift over a threshold leading to the 5.1 Annual Crops Plant Community Phase within the Crop Production State (State 5).

## **Restoration pathway R4**

### **State 4 to 3**

Long-term prescribed grazing (moderate stocking levels coupled with adequate recovery periods, or other grazing systems such as high-density, low-frequency intended to treat specific species dominance, or periodic light to moderate stocking levels possibly including periodic rest) coupled with prescribed burning may lead this plant community phase over a threshold to the Native/Invaded State (State 3).

## **Conservation practices**

Prescribed Grazing
--------------------

## **Transition T4**

### **State 4 to 5**

Tillage will cause a shift over a threshold leading to the 5.1 Annual Crops Plant Community Phase within the Crop Production State (State 5).

## **Restoration pathway R5A**

### **State 5 to 3**

Seeding may lead this Crop Production State (State 5) over a threshold to the Native/Invaded State (State 3).

## Restoration pathway R5B

### State 5 to 4

Seeding may lead this Crop Production State (State 5) over a threshold to the Invaded State (State 4) Cropping followed by abandonment may lead this plant community phase over a threshold to the Invaded State (State 4) and more specifically to the 4.3 Annual Pioneer-Perennial Pioneer Plant Community Phase.

## Additional community tables

Table 9. Community 1.1 plant community composition

Group	Common Name	Symbol	Scientific Name	Annual Production (Kg/Hectare)	Foliar Cover (%)
<b>Grass/Grasslike</b>					
1	<b>Tall Warm-Season Grasses</b>			785–1765	
	big bluestem	ANGE	<i>Andropogon gerardii</i>	392–1373	–
	Indiangrass	SONU2	<i>Sorghastrum nutans</i>	196–981	–
	switchgrass	PAVI2	<i>Panicum virgatum</i>	78–392	–
	composite dropseed	SPCOC2	<i>Sporobolus compositus</i> var. <i>compositus</i>	0–118	–
2	<b>Cool-Season Bunchgrasses</b>			392–785	
	porcupinegrass	HESP11	<i>Hesperostipa spartea</i>	196–785	–
	green needlegrass	NAVI4	<i>Nassella viridula</i>	196–785	–
	Canada wildrye	ELCA4	<i>Elymus canadensis</i>	0–118	–
3	<b>Mid Warm-Season Grasses</b>			392–785	
	little bluestem	SCSC	<i>Schizachyrium scoparium</i>	196–588	–
	prairie dropseed	SPHE	<i>Sporobolus heterolepis</i>	78–392	–
	sideoats grama	BOCU	<i>Bouteloua curtipendula</i>	78–392	–
4	<b>Wheatgrass</b>			196–392	
	slender wheatgrass	ELTR7	<i>Elymus trachycaulus</i>	78–392	–
	western wheatgrass	PASM	<i>Pascopyrum smithii</i>	0–196	–
5	<b>Other Native Grasses</b>			118–275	
	Graminoid (grass or grass-like)	2GRAM	<i>Graminoid (grass or grass-like)</i>	39–196	–
	blue grama	BOGR2	<i>Bouteloua gracilis</i>	39–196	–
	prairie Junegrass	KOMA	<i>Koeleria macrantha</i>	39–78	–
	Scribner's rosette grass	DIOLS	<i>Dichanthelium oligosanthes</i> var. <i>scribnerianum</i>	0–39	–
	fall rosette grass	DIWI5	<i>Dichanthelium wilcoxianum</i>	0–39	–
6	<b>Grass-likes</b>			39–196	
	sedge	CAREX	<i>Carex</i>	39–196	–
	Grass-like (not a true grass)	2GL	<i>Grass-like (not a true grass)</i>	0–118	–
<b>Forb</b>					
7	<b>Forbs</b>			196–588	
	Forb, native	2FN	<i>Forb, native</i>	39–196	–
	blazing star	LIATR	<i>Liatris</i>	39–118	–
	scurfpea	PSORA2	<i>Psoraleidium</i>	39–118	–
	white heath aster	SYER	<i>Symphotrichum ericoides</i>	39–78	–

	aromatic aster	SYOB	<i>Symphyotrichum oblongifolium</i>	0–78	–
	stiff goldenrod	OLRI	<i>Oligoneuron rigidum</i>	39–78	–
	soft-hair marbleseed	ONBEB	<i>Onosmodium bejariense</i> var. <i>bejariense</i>	39–78	–
	upright prairie coneflower	RACO3	<i>Ratibida columnifera</i>	39–78	–
	compassplant	SILA3	<i>Silphium laciniatum</i>	0–78	–
	Canada goldenrod	SOCA6	<i>Solidago canadensis</i>	39–78	–
	western yarrow	ACMIO	<i>Achillea millefolium</i> var. <i>occidentalis</i>	39–78	–
	Cuman ragweed	AMPS	<i>Ambrosia psilostachya</i>	39–78	–
	field sagewort	ARCA12	<i>Artemisia campestris</i>	39–78	–
	white sagebrush	ARLU	<i>Artemisia ludoviciana</i>	39–78	–
	false boneset	BREU	<i>Brickellia eupatorioides</i>	39–78	–
	wavyleaf thistle	CIUN	<i>Cirsium undulatum</i>	0–78	–
	purple prairie clover	DAPU5	<i>Dalea purpurea</i>	39–78	–
	blacksamson echinacea	ECAN2	<i>Echinacea angustifolia</i>	39–78	–
	stiff sunflower	HEPA19	<i>Helianthus pauciflorus</i>	39–78	–
	American vetch	VIAM	<i>Vicia americana</i>	39–78	–
	Missouri goldenrod	SOMI2	<i>Solidago missouriensis</i>	0–39	–
	rush skeletonplant	LYJU	<i>Lygodesmia juncea</i>	0–39	–
	Nuttall's sensitive-briar	MINU6	<i>Mimosa nuttallii</i>	0–39	–
	hoary verbena	VEST	<i>Verbena stricta</i>	0–39	–
	cutleaf anemone	PUPAM	<i>Pulsatilla patens</i> ssp. <i>multifida</i>	0–39	–
<b>Shrub/Vine</b>					
8	<b>Shrubs</b>			78–314	
	leadplant	AMCA6	<i>Amorpha canescens</i>	39–157	–
	rose	ROSA5	<i>Rosa</i>	39–118	–
	snowberry	SYMPH	<i>Symphoricarpos</i>	39–118	–
	smooth sumac	RHGL	<i>Rhus glabra</i>	0–78	–
	Shrub (>.5m)	2SHRUB	<i>Shrub (&gt;.5m)</i>	0–78	–
	prairie sagewort	ARFR4	<i>Artemisia frigida</i>	0–39	–

Table 10. Community 3.2 plant community composition

Group	Common Name	Symbol	Scientific Name	Annual Production (Kg/Hectare)	Foliar Cover (%)
<b>Grass/Grasslike</b>					
1	<b>Tall Warm-Season Grasses</b>			157–471	
	big bluestem	ANGE	<i>Andropogon gerardii</i>	63–471	–
	switchgrass	PAVI2	<i>Panicum virgatum</i>	0–157	–
	Indiangrass	SONU2	<i>Sorghastrum nutans</i>	0–157	–
	composite dropseed	SPCOC2	<i>Sporobolus compositus</i> var. <i>compositus</i>	0–157	–
2	<b>Cool-season Bunchgrasses</b>			314–942	
	green needlegrass	NAVI4	<i>Nassella viridula</i>	157–785	–
	porcupinegrass	HESP11	<i>Hesperostipa spartea</i>	63–314	–
	Canada wildrye	ELCA4	<i>Elymus canadensis</i>	0–31	–

3	<b>Mid Warm-Season Grasses</b>			471–785	
	little bluestem	SCSC	<i>Schizachyrium scoparium</i>	314–785	–
	sideoats grama	BOCU	<i>Bouteloua curtipendula</i>	63–471	–
	prairie dropseed	SPHE	<i>Sporobolus heterolepis</i>	0–157	–
4	<b>Wheatgrass</b>			157–471	
	western wheatgrass	PASM	<i>Pascopyrum smithii</i>	63–314	–
	slender wheatgrass	ELTR7	<i>Elymus trachycaulus</i>	31–251	–
5	<b>Other Native Grasses</b>			157–314	
	blue grama	BOGR2	<i>Bouteloua gracilis</i>	63–251	–
	Graminoid (grass or grass-like)	2GRAM	<i>Graminoid (grass or grass-like)</i>	31–157	–
	prairie Junegrass	KOMA	<i>Koeleria macrantha</i>	31–63	–
	Scribner's rosette grass	DIOLS	<i>Dichanthelium oligosanthos</i> var. <i>scribnerianum</i>	0–31	–
	fall rosette grass	DIWI5	<i>Dichanthelium wilcoxianum</i>	0–31	–
6	<b>Grass-like</b>			31–157	
	sedge	CAREX	<i>Carex</i>	31–157	–
	Grass-like (not a true grass)	2GL	<i>Grass-like (not a true grass)</i>	0–94	–
7	<b>Non-Native Grasses</b>			157–471	
	Kentucky bluegrass	POPR	<i>Poa pratensis</i>	157–471	–
	smooth brome	BRIN2	<i>Bromus inermis</i>	0–251	–
	quackgrass	ELRE4	<i>Elymus repens</i>	0–157	–
<b>Forb</b>					
8	<b>Forbs</b>			157–314	
	Canada goldenrod	SOCA6	<i>Solidago canadensis</i>	31–94	–
	white heath aster	SYER	<i>Symphotrichum ericoides</i>	31–94	–
	white sagebrush	ARLU	<i>Artemisia ludoviciana</i>	31–94	–
	Forb, introduced	2FI	<i>Forb, introduced</i>	31–94	–
	western yarrow	ACMIO	<i>Achillea millefolium</i> var. <i>occidentalis</i>	31–94	–
	Cuman ragweed	AMPS	<i>Ambrosia psilostachya</i>	31–94	–
	stiff goldenrod	OLRI	<i>Oligoneuron rigidum</i>	31–94	–
	scurfpea	PSORA2	<i>Psoralegium</i>	31–94	–
	field sagewort	ARCA12	<i>Artemisia campestris</i>	31–63	–
	Forb, native	2FN	<i>Forb, native</i>	0–63	–
	hoary verbena	VEST	<i>Verbena stricta</i>	0–63	–
	American vetch	VIAM	<i>Vicia americana</i>	0–31	–
	aromatic aster	SYOB	<i>Symphotrichum oblongifolium</i>	0–31	–
	Missouri goldenrod	SOMI2	<i>Solidago missouriensis</i>	0–31	–
	upright prairie coneflower	RACO3	<i>Ratibida columnifera</i>	0–31	–
	soft-hair marbleseed	ONBEB	<i>Onosmodium bejariense</i> var. <i>bejariense</i>	0–31	–
	false boneset	BREU	<i>Brickellia eupatorioides</i>	0–31	–
	wavyleaf thistle	CIUN	<i>Cirsium undulatum</i>	0–31	–
	purple prairie clover	DAPU5	<i>Dalea purpurea</i>	0–31	–

	blacksamson echinacea	ECAN2	<i>Echinacea angustifolia</i>	0–31	–
	stiff sunflower	HEPA19	<i>Helianthus pauciflorus</i>	0–31	–
	blazing star	LIATR	<i>Liatris</i>	0–31	–
	rush skeletonplant	LYJU	<i>Lygodesmia juncea</i>	0–31	–
<b>Shrub/Vine</b>					
9	<b>Shrubs</b>			31–157	
	smooth sumac	RHGL	<i>Rhus glabra</i>	0–126	–
	rose	ROSA5	<i>Rosa</i>	31–63	–
	snowberry	SYMPH	<i>Symphoricarpos</i>	0–63	–
	prairie sagewort	ARFR4	<i>Artemisia frigida</i>	0–63	–
	Shrub (>.5m)	2SHRUB	<i>Shrub (&gt;.5m)</i>	0–31	–
	leadplant	AMCA6	<i>Amorpha canescens</i>	0–31	–

Table 11. Community 4.1 plant community composition

Group	Common Name	Symbol	Scientific Name	Annual Production (Kg/Hectare)	Foliar Cover (%)
<b>Grass/Grasslike</b>					
1	<b>Tall Warm-season Grasses</b>			0–179	
	composite dropseed	SPCOC2	<i>Sporobolus compositus</i> var. <i>compositus</i>	0–179	–
	big bluestem	ANGE	<i>Andropogon gerardii</i>	0–108	–
2	<b>Cool-Season Bunchgrasses</b>			0–359	
	green needlegrass	NAVI4	<i>Nassella viridula</i>	0–359	–
	Canada wildrye	ELCA4	<i>Elymus canadensis</i>	0–72	–
	porcupinegrass	HESP11	<i>Hesperostipa spartea</i>	0–72	–
3	<b>Mid Warm-Season Grasses</b>			0–179	
	sideoats grama	BOCU	<i>Bouteloua curtipendula</i>	0–179	–
	little bluestem	SCSC	<i>Schizachyrium scoparium</i>	0–179	–
4	<b>Wheatgrass</b>			0–179	
	slender wheatgrass	ELTR7	<i>Elymus trachycaulus</i>	0–179	–
	western wheatgrass	PASM	<i>Pascopyrum smithii</i>	0–179	–
5	<b>Other Native Grasses</b>			0–179	
	Graminoid (grass or grass-like)	2GRAM	<i>Graminoid (grass or grass-like)</i>	0–179	–
	blue grama	BOGR2	<i>Bouteloua gracilis</i>	0–143	–
	Scribner's rosette grass	DIOLS	<i>Dichanthelium oligosanthos</i> var. <i>scribnerianum</i>	0–36	–
	fall rosette grass	DIWI5	<i>Dichanthelium wilcoxianum</i>	0–36	–
	prairie Junegrass	KOMA	<i>Koeleria macrantha</i>	0–36	–
6	<b>Grass-likes</b>			0–179	
	sedge	CAREX	<i>Carex</i>	0–179	–
	Grass-like (not a true grass)	2GL	<i>Grass-like (not a true grass)</i>	0–72	–
7	<b>Non-Native Grasses</b>			1076–2690	
	smooth brome	BRIN2	<i>Bromus inermis</i>	717–2511	–
	Kentucky bluegrass	POPR	<i>Poa pratensis</i>	359–1793	–

	quackgrass	ELRE4	<i>Elymus repens</i>	0–359	–
<b>Forb</b>					
8	<b>Forbs</b>			179–538	
	Forb, introduced	2FI	<i>Forb, introduced</i>	36–359	–
	white sagebrush	ARLU	<i>Artemisia ludoviciana</i>	36–251	–
	Canada goldenrod	SOC6	<i>Solidago canadensis</i>	36–251	–
	white heath aster	SYER	<i>Symphotrichum ericoides</i>	36–179	–
	Cuman ragweed	AMPS	<i>Ambrosia psilostachya</i>	36–179	–
	field sagewort	ARCA12	<i>Artemisia campestris</i>	36–143	–
	stiff goldenrod	OLRI	<i>Oligoneuron rigidum</i>	36–143	–
	scurfpea	PSORA2	<i>Psoralea</i>	36–143	–
	western yarrow	ACMIO	<i>Achillea millefolium</i> var. <i>occidentalis</i>	36–143	–
	hoary verbena	VEST	<i>Verbena stricta</i>	0–108	–
	rush skeletonplant	LYJU	<i>Lygodesmia juncea</i>	0–36	–
	Forb, native	2FN	<i>Forb, native</i>	0–36	–
<b>Shrub/Vine</b>					
9	<b>Shrubs</b>			36–179	
	smooth sumac	RHGL	<i>Rhus glabra</i>	0–179	–
	snowberry	SYMPH	<i>Symphoricarpos</i>	36–108	–
	Shrub (>.5m)	2SHRUB	<i>Shrub (&gt;.5m)</i>	0–72	–
	prairie sagewort	ARFR4	<i>Artemisia frigida</i>	0–36	–
	rose	ROSA5	<i>Rosa</i>	0–36	–

Table 12. Community 4.2 plant community composition

Group	Common Name	Symbol	Scientific Name	Annual Production (Kg/Hectare)	Foliar Cover (%)
<b>Grass/Grasslike</b>					
1	<b>Tall Warm-season Grasses</b>			0–123	
	composite dropseed	SPCOC2	<i>Sporobolus compositus</i> var. <i>compositus</i>	0–123	–
	big bluestem	ANGE	<i>Andropogon gerardii</i>	0–123	–
	switchgrass	PAVI2	<i>Panicum virgatum</i>	0–74	–
2	<b>Cool-season Bunchgrasses</b>			0–123	
	green needlegrass	NAVI4	<i>Nassella viridula</i>	0–123	–
3	<b>Mid Warm-Season Grasses</b>			0–123	
	sideoats grama	BOCU	<i>Bouteloua curtipendula</i>	0–74	–
	little bluestem	SCSC	<i>Schizachyrium scoparium</i>	0–74	–
4	<b>Wheatgrass</b>			0–123	
	western wheatgrass	PASM	<i>Pascopyrum smithii</i>	0–123	–
	slender wheatgrass	ELTR7	<i>Elymus trachycaulus</i>	0–25	–
5	<b>Other Native Grasses</b>			25–247	
	blue grama	BOGR2	<i>Bouteloua gracilis</i>	25–247	–
	Graminoid (grass or grass-like)	2GRAM	<i>Graminoid (grass or grass-like)</i>	0–74	–
	Scribner's rosette grass	DIOLS	<i>Dichanthelium oligosanthes</i> var. <i>scaberrimum</i>	0–25	–

			<i>scribnerianum</i>		
	fall rosette grass	DIWI5	<i>Dichanthelium wilcoxianum</i>	0–25	–
	prairie Junegrass	KOMA	<i>Koeleria macrantha</i>	0–25	–
6	<b>Grass-likes</b>			25–123	
	sedge	CAREX	<i>Carex</i>	25–123	–
	Grass-like (not a true grass)	2GL	<i>Grass-like (not a true grass)</i>	0–25	–
7	<b>Non-Native Grasses</b>			493–1849	
	Kentucky bluegrass	POPR	<i>Poa pratensis</i>	247–1480	–
	quackgrass	ELRE4	<i>Elymus repens</i>	123–986	–
	smooth brome	BRIN2	<i>Bromus inermis</i>	123–740	–
<b>Forb</b>					
8	<b>Forbs</b>			123–370	
	Forb, introduced	2FI	<i>Forb, introduced</i>	25–247	–
	Canada goldenrod	SOCA6	<i>Solidago canadensis</i>	25–148	–
	white sagebrush	ARLU	<i>Artemisia ludoviciana</i>	0–123	–
	stiff goldenrod	OLRI	<i>Oligoneuron rigidum</i>	25–123	–
	western yarrow	ACMIO	<i>Achillea millefolium var. occidentalis</i>	25–123	–
	Cuman ragweed	AMPS	<i>Ambrosia psilostachya</i>	25–123	–
	field sagewort	ARCA12	<i>Artemisia campestris</i>	25–99	–
	white heath aster	SYER	<i>Symphotrichum ericoides</i>	0–99	–
	hoary verbena	VEST	<i>Verbena stricta</i>	0–74	–
	scurfpea	PSORA2	<i>Psoraleidum</i>	0–74	–
	Forb, native	2FN	<i>Forb, native</i>	0–25	–
<b>Shrub/Vine</b>					
9	<b>Shrubs</b>			0–123	
	smooth sumac	RHGL	<i>Rhus glabra</i>	0–123	–
	prairie sagewort	ARFR4	<i>Artemisia frigida</i>	0–74	–
	snowberry	SYMPH	<i>Symphoricarpos</i>	0–49	–
	Shrub (>.5m)	2SHRUB	<i>Shrub (&gt;.5m)</i>	0–25	–

## Animal community

### Animal Community – Grazing Interpretations

The following table lists annual, suggested initial stocking rates with average growing conditions. These are conservative estimates that should be used only as guidelines in the initial stages of conservation planning. Often, the current plant composition does not entirely match any particular plant community (as described in this ES description). Because of this, a resource inventory is necessary to document plant composition and production. More accurate carrying capacity estimates should eventually be calculated using the following stocking rate information along with animal preference data and actual stocking records, particularly when grazers other than cattle are involved. With consultation of the land manager, more intensive grazing management may result in improved harvest efficiencies and increased carrying capacity.

#### Bluestem/Needlegrass (1.1 & 3.1)

Total annual production (lbs/ac, air-dry): 3500

Stocking rate\* (AUM/ac): 0.96

#### Needlegrass/Little Bluestem/Kentucky Bluegrass (3.2)

Total annual production (lbs/ac, air-dry): 2800

Stocking rate\* (AUM/ac): 0.77

Smooth Brome grass/Kentucky Bluegrass (4.1)

Total annual production (lbs/ac, air-dry): 3200

Stocking rate\* (AUM/ac): 0.88

Kentucky Bluegrass/Quackgrass (4.2)

Total annual production (lbs/ac, air-dry): 2200

Stocking rate\* (AUM/ac): 0.60

Annual/Pioneer, Non-Native Perennial (4.3)

Total annual production (lbs/ac, air-dry): 1000

Stocking rate\* (AUM/ac): 0.27

\*Based on 912 lbs./acre (air-dry weight) per Animal Unit Month (AUM), and on 25 percent harvest efficiency (refer to United States Department of Agriculture (USDA) Natural Resources Conservation Service (NRCS), National Range and Pasture Handbook).

Grazing by domestic livestock is one of the major income-producing industries in the area. Rangeland, in this area, may provide yearlong forage. During the dormant period, the forage for livestock will likely be lacking protein to meet livestock requirements and added protein will allow ruminants to better utilize the energy stored in grazed plant materials. A forage quality test (either directly or through fecal sampling) should be used to determine the level of supplementation needed.

## Hydrological functions

Water is the principal factor limiting forage production on this site. This site is dominated by soils in hydrologic group B. Infiltration is typically moderate to moderately slow and runoff potential for this site varies from low to high depending on soil hydrologic group, slope, and ground cover. In many cases, areas with greater than 75 percent ground cover have the greatest potential for high infiltration and lower runoff. An example of an exception would be where shortgrasses form a strong sod and dominate the site. Dominance by blue grama, buffalograss, bluegrass, and/or smooth brome grass will result in reduced infiltration and increased runoff. Areas where ground cover is less than 50 percent have the greatest potential to have reduced infiltration and higher runoff (refer to Section 4, NRCS National Engineering Handbook for runoff quantities and hydrologic curves).

## Recreational uses

This site provides hunting, hiking, photography, bird watching, and other opportunities. The wide varieties of plants that bloom from spring until fall have an esthetic value that appeals to visitors.

## Wood products

No appreciable wood products are typically present on this site.

## Other products

Seed harvest of native plant species can provide additional income on this site.

## Inventory data references

MLRA 102D was created in 2022 with Agricultural Handbook 296 updated. This area was MLRA 102A prior to this time. Information was copied from MLRA 102A ESDs to create the MLRA 102D ESDs.

Information presented here has been derived from NRCS clipping data and other inventory data. Field observations from range-trained personnel were also used. Those involved in developing this site include: Stan Boltz, Range Management Specialist, NRCS; and Bruce Kunze, Soil Scientist, NRCS.

Data Source Sample Period State County



SCS-Range-417 (1018546039) 1985 SD Deuel  
SCS-Range-417 (0018546091) 1985 SD Marshall  
SCS-Range-417 (0018646091) 1986 SD Marshall  
SCS-Range-417 (0018746091) 1987 SD Marshall  
SCS-Range-417 (1018546109) 1985 SD Marshall  
NP-ESC-1 (0050746039) 2007 SD Deuel  
NP-ESC-1 (0060746039) 2007 SD Deuel  
NP-ESC-1 (0070746039) 2007 SD Deuel  
NP-ESC-1 (0080746039) 2007 SD Deuel  
NP-ESC-1 (0011346039) 2007 SD Deuel

## **Other references**

Cleland, D.T., J.A. Freeouf, J.E. Keys, G.J. Nowacki, C. Carpenter, and W.H. McNab. 2007. Ecological Subregions: Sections and Subsections of the Conterminous United States. USDA Forest Service, General Technical Report WO-76. Washington, DC. 92 pps.

Gilbert, M. C., Whited, P. M., Clairain Jr, E. J., & Smith, R. D. (2006). A Regional Guidebook for Applying the Hydrogeomorphic Approach to Assessing Wetland Functions of Prairie Potholes. Washington DC.

Samson, F. B., & Knopf, F. L. (1996). Prairie Conservation Preserving North America's Most Endangered Ecosystem. Washington D.C.: Island Press.

Soil Survey Staff, Natural Resources Conservation Service, United States Department of Agriculture. Official Soil Series Descriptions. Available online. Accessed March 2018.

United States Department of Agriculture – Natural Resource Conservation Service (USDA-NRCS). 2003. National Range and Pasture Handbook, Revision 1. Grazing Lands Technology Institute. 214 pps.

United States Department of Agriculture – Natural Resource Conservation Service (USDA-NRCS). 2006. Land Resource Regions and Major Land Resource Areas of the United States, the Caribbean, and the Pacific Basin. U.S. Department of Agriculture Handbook 296. 672pps.

United States Department of Agriculture, Natural Resources Conservation Service. 2022. Land resource regions and major land resource areas of the United States, the Caribbean, and the Pacific Basin. U.S. Department of Agriculture, Agriculture Handbook 296.

USDA, NRCS. National Soil Information System, Information Technology Center, 2150 Centre Avenue, Building A, Fort Collins, CO 80526. (<http://soils.usda.gov/technical/nasis/>)

USDA, NRCS. 2018. The PLANTS Database (<http://plants.usda.gov>, 27 March 2018). National Plant Data Team, Greensboro, NC 27401-4901 USA.

U.S. Environmental Protection Agency [EPA]. 2013. Level III and Level IV Ecoregions of the Continental United States. Corvallis, OR, U.S. EPA, National Health and Environmental Effects Research Laboratory, map scale 1:3,000,000. Available at <http://www.epa.gov/eco-research/level-iii-and-iv-ecoregions-continental-united-states>. (Accessed 1 March 2018).

## **Contributors**

Megan Baxter  
Stan Boltz  
Lance Howe  
Steve Winter

## **Approval**

Suzanne Mayne-Kinney, 8/14/2024

## Acknowledgments

Contact for Lead Authors: Natural Resources Conservation Service (USDA-NRCS), Redfield Soil Survey Office Redfield, SD; Lance Howe (Lance.Howe@usda.gov), Soil Survey Office Leader, USDA-NRCS, Redfield, SD; and Steve Winter (Steven.Winter@usda.gov), Soil Scientist, USDA-NRCS, Redfield, SD

Additional Information Acknowledgment: Jason Hermann (Jason.Hermann@usda.gov), Area Rangeland Management Specialist, USDA-NRCS, Redfield, SD

## Rangeland health reference sheet

Interpreting Indicators of Rangeland Health is a qualitative assessment protocol used to determine ecosystem condition based on benchmark characteristics described in the Reference Sheet. A suite of 17 (or more) indicators are typically considered in an assessment. The ecological site(s) representative of an assessment location must be known prior to applying the protocol and must be verified based on soils and climate. Current plant community cannot be used to identify the ecological site.

Author(s)/participant(s)	David Schmidt, Tim Nordquist, Stan Boltz
Contact for lead author	
Date	12/07/2004
Approved by	Suzanne Mayne-Kinney
Approval date	
Composition (Indicators 10 and 12) based on	Annual Production

## Indicators

1. **Number and extent of rills:** Rills should not be present.

---

2. **Presence of water flow patterns:** Barely observable.

---

3. **Number and height of erosional pedestals or terracettes:** Essentially, non-existent.

---

4. **Bare ground from Ecological Site Description or other studies (rock, litter, lichen, moss, plant canopy are not bare ground):** Bare ground less than 5% and less than 2 inches in diameter.

---

5. **Number of gullies and erosion associated with gullies:** Active gullies should not be present.

---

6. **Extent of wind scoured, blowouts and/or depositional areas:** None.

---

7. **Amount of litter movement (describe size and distance expected to travel):** Little to no plant litter movement. Plant litter remains in place and is not moved by erosional forces.

- 
8. **Soil surface (top few mm) resistance to erosion (stability values are averages - most sites will show a range of values):** Stability class usually 6. Typically high root content, organic matter, and granular structure. Soil surface is very resistant to erosion.
- 
9. **Soil surface structure and SOM content (include type of structure and A-horizon color and thickness):** Use soil series description for depth and color of A-horizon.
- 
10. **Effect of community phase composition (relative proportion of different functional groups) and spatial distribution on infiltration and runoff:** Healthy, deep rooted native grasses enhance infiltration and reduce runoff.
- 
11. **Presence and thickness of compaction layer (usually none; describe soil profile features which may be mistaken for compaction on this site):** No compaction layer should be evident.
- 
12. **Functional/Structural Groups (list in order of descending dominance by above-ground annual-production or live foliar cover using symbols: >>, >, = to indicate much greater than, greater than, and equal to):**
- Dominant: Mid warm-season bunch grass = tall warm-season rhizomatous grass>
- Sub-dominant: tall cool-season bunch grass >> forb > mid warm-season rhizomatous grass > short cool-season grass
- Other: = short warm-season grass = shrubs
- Additional:
- 
13. **Amount of plant mortality and decadence (include which functional groups are expected to show mortality or decadence):** Very little to no evidence of decadence or mortality.
- 
14. **Average percent litter cover (%) and depth ( in):** 70-80%, roughly 0.5 inch thick or less. Litter cover is in contact with soil surface.
- 
15. **Expected annual annual-production (this is TOTAL above-ground annual-production, not just forage annual-production):** 3000 – 4000 lbs./acre air-dry weight, average 3,500 lbs./acre air-dry weight
- 
16. **Potential invasive (including noxious) species (native and non-native). List species which BOTH characterize degraded states and have the potential to become a dominant or co-dominant species on the ecological site if their future establishment and growth is not actively controlled by management interventions. Species that become dominant for only one to several years (e.g., short-term response to drought or wildfire) are not invasive plants. Note that unlike other indicators, we are describing what is NOT expected in the reference state for the ecological site:** Refer to State and Local Noxious Weed List, also Kentucky bluegrass, smooth brome grass
-

17. **Perennial plant reproductive capability:** All species are capable of reproducing.

---