

Ecological site F105XY003WI

Wet Loamy-Clayey Floodplain

Last updated: 2/23/2024
Accessed: 04/25/2024

General information

Provisional. A provisional ecological site description has undergone quality control and quality assurance review. It contains a working state and transition model and enough information to identify the ecological site.

MLRA notes

Major Land Resource Area (MLRA): 105X–Upper Mississippi River Bedrock Controlled Uplands and Valleys

The Northern Mississippi Valley Loess Hills area corresponds closely to the Western Coulees and Ridges and Southwest Savanna Ecological Landscapes. Some of the following brief overview is borrowed from the Wisconsin Department of Natural Resources Ecological Landscape publication (2015).

Fifty-two percent of the Upper Mississippi River Bedrock Controlled Uplands and Valleys MLRA is in Wisconsin; Iowa, Minnesota, and Illinois contain the rest. This region is the only area in Wisconsin that has not been covered by glaciers within the past 2.4 million years. The Wisconsin portion of this MLRA is approximately 7.4 million acres (11,600 square miles). The landscape is characterized by dissected topography with deeply-incised, steep-walled valleys between bedrock controlled ridges.

Though it's called the "Driftless Region", some glacial drift is found in the major river valleys of this region in the form of outwash, deposited by proglacial streams of glacial meltwater. Wisconsin's most recent glaciations also impacted the sediment of the area through the deposition of loess. After the glacier receded and before vegetation established, the bare surfaces of the glaciated areas were highly susceptible to wind erosion. As a result, a veneer of loess (wind-blown silt) was deposited over the entire region. The thickest deposits—nearly five meters—are on ridges near the Mississippi River and gradually thin moving eastward. The loess caps in Dane and Green counties are generally 0.5-1.5 meters deep. Much of the loess has eroded downslope and collected in floodplains.

Bedrock is shallow throughout this MLRA and is a major influence on topography and hydrology. Most of the MLRA has bedrock within two meters, except in the deep river valleys that are filled with outwash and alluvium materials. Sandstone is the dominant bedrock type in MLRA 105, but the southernmost portion is dominated by dolomite. Military Ridge is an escarpment that straddles the boundary between sandstone and dolomite bedrock. The sandstone north of the ridge is weaker than the erosion-resistant dolomite south of the ridge. The sandstone is deeply cut and dissected into steep slopes and valleys. The dolomite-controlled ridges tend to be less dissected and broader with more gentle, south sloping topography. Geomorphic and fluvial processes formed these landscapes by way of sheet wash, soil creep, and flowage. These processes eroded the hillslopes, cut into bedrock, and transported the debris to streams, forming floodplains and terraces.

Underfit streams are common in MLRA 105, especially in the southern portion. These streams currently occupy large river valleys—especially those of the Black, Chippewa, Mississippi, and Wisconsin Rivers—that were carved by proglacial meltwater streams carrying much larger quantities of water than what's present today. As the climate dried, waterflow decreased and the valleys filled with alluvial sediment. Narrow meanders were formed by the shrinking streams and are often dissimilar to the meanders of the larger valleys they occupy. Fluvial landforms – including terraces, oxbow lakes, sandbars, eroding bluffs, and large floodplain complexes – are found within these large valleys and are subject to varying flooding frequencies, intensities, and durations.

Karst topography formed in this region from dissolution of carbonate bedrock by surface and groundwater. Dolomite and limestone are more easily affected by dissolution, but karst topography also formed in sandstone. Erosion by water (stream meanders, rain/runoff, and groundwater), wind, and frost weaken joints and bedding planes that can

cause collapse. In addition, sandstone materials collapse into cavities in underlying dolomite or limestone.

Historically, MLRA 105 was dominated by oak forests and oak openings making up more than 50% of the area. Prairies were significant and covered 32% of the area south of Military Ridge. Maple-basswood forests covered 19% of the area north of Military Ridge. Dominant tree species were white oak (*Quercus alba*), bur oak (*Quercus macrocarpa*), black oak (*Quercus velutina*), and sugar maple (*Acer saccharum*).

Classification relationships

Relationship to Established Framework and Classification Systems:

Habitat Types of S. Wisconsin (Kotar, 1996): The closest fit is from a Northern Wetland Forest Habitat Type *Fraxinus nigra/Onoclea sensibilis* [FnOn]

Biophysical Settings (Landfire, 2014): This ES is largely mapped as Central Interior and Appalachian Floodplain Forest, North-Central Interior Maple-Basswood Forest, Eastern Cool Temperate Pasture and Hayland, and Eastern Cool Temperate Row Crop

WDNR Natural Communities (WDNR, 2015): This ES most closely resembles the Floodplain Forest as described by the Wisconsin DNR.

Hierarchical Framework Relationships:

Major Land Resource Area (MLRA): Upper Mississippi River Bedrock Controlled Uplands and Valleys (105)

USFS Subregions: Menominee Eroded Pre-Wisconsin Till (222La), Melrose Oak Forest and Savannah (222Lb), Mississippi-Wisconsin River Ravines (222Lc), Kickapoo-Wisconsin River Ravines (222Ld), Mineral Point Prairie-Savannah (222Le)

Wisconsin DNR Ecological Landscapes: Western Coulee and Ridges, Southwest Savannah

Ecological site concept

The Wet Loamy-Clayey Floodplains ecological site accounts for approximately 124,000 acres in MLRA 105, or about 1.8% of total land area. It is ecological site is scattered throughout the MLRA. It can be found in the floodplains along most of MLRA 105's rivers, though it's less common than it's sandy counterpart (Wet Sandy Floodplains) in floodplains in the wide river valleys of the Chippewa, Black, and Wisconsin Rivers, which carried large loads of sandy and gravelly outwash and during the Late Wisconsin glaciation.

These sites are characterized by very deep, poorly to somewhat poorly drained soils that formed in loamy and silty alluvium comprised of reworked loess, till, residuum, and lacustrine deposits. They are subject to flooding. The primary water source is stream overflow but precipitation, runoff from adjacent uplands, and groundwater discharge are also contributing waters sources. Some sites are wetlands.

Associated sites

F105XY008WI	Moist Loamy-Clayey Lowland These sites form in loamy and clayey materials. They are somewhat poorly drained. They are sometimes found adjacent to Wet Loamy-Clayey Floodplains in higher landscape positions.
F105XY013WI	Loamy-Silty Upland These sites form in loamy to silty materials, often silty loess and residuum. They are moderately well to well drained. They are often found adjacent to Wet Loamy-Clayey Floodplains in higher landscape positions.

Similar sites

F105XY002WI	<p>Wet Sandy Floodplain</p> <p>These sites form in deep, sandy alluvium and outwash deposits in floodplains, especially those along the Chippewa, Black, and Wisconsin rivers. They support vegetation tolerant of seasonal flooding. They are sometimes saturated enough for hydric conditions to occur. Like Wet Loamy-Clayey Floodplains, they are sometimes saturated long enough for hydric conditions to occur and will support vegetation tolerant of seasonal flooding, though they have a lower nutrient status.</p>
F105XY005WI	<p>Wet Loamy-Clayey Lowland</p> <p>These sites form in depressions, drainageways, and swales in deep loamy alluvium deposits or in clayey residuum. They are very poorly or poorly drained and are saturated long enough for hydric conditions to occur. They may sometimes host vegetative communities similar to those found in Wet Loamy-Clayey Floodplains.</p>

Table 1. Dominant plant species

Tree	(1) <i>Fraxinus nigra</i> (2) <i>Ulmus</i>
Shrub	(1) <i>Alnus incana</i> (2) <i>Cornus</i>
Herbaceous	(1) <i>Carex</i> (2) <i>Impatiens capensis</i>

Physiographic features

These sites are found on loamy or clayey floodplains. Landform shape is concave or linear. Sites are in the toeslope position. Slopes range from 0 to 3 percent. Elevation of the landform ranges from 705 to 1001 feet (215 to 305 meters) above sea level.

These sites are subject to occasional to frequent flooding. Flooding duration may be brief to long (2 to 30 days). Some sites may be subject to ponding. The apparent seasonally high water table may be found throughout the soil profile. Runoff potential is negligible to low.

Table 2. Representative physiographic features

Hillslope profile	(1) Toeslope
Slope shape across	(1) Concave
Slope shape up-down	(1) Linear
Landforms	(1) Flood plain
Runoff class	Negligible to low
Flooding duration	Brief (2 to 7 days) to long (7 to 30 days)
Flooding frequency	Occasional to frequent
Ponding duration	Brief (2 to 7 days) to long (7 to 30 days)
Ponding frequency	None to frequent
Elevation	705–1,001 ft
Slope	0–3%
Ponding depth	0–12 in
Water table depth	0–18 in
Aspect	Aspect is not a significant factor

Climatic features

The climate of the Upper Mississippi River Bedrock Controlled Uplands and Valleys MLRA is typical of southern Wisconsin, with warmer winters, warmer summers, and higher precipitation rates than MLRA in northern Wisconsin.

The MLRA stretches over about 2.9 degrees of latitude, or nearly 200 miles, from its northern tip in Barron county to its southern Wisconsin extent on the border of Illinois. This results in considerable variation in climate throughout the MLRA. The growing season ranges from 117 to 181 growing degree days, with longer growing seasons in the southern portion.

The average annual precipitation for this ecological site is 36 inches. The average annual snowfall is 40 inches. The annual average maximum and minimum temperatures are 56°F and 35°F, respectively.

Table 3. Representative climatic features

Frost-free period (characteristic range)	110-144 days
Freeze-free period (characteristic range)	133-165 days
Precipitation total (characteristic range)	35-37 in
Frost-free period (actual range)	107-150 days
Freeze-free period (actual range)	125-170 days
Precipitation total (actual range)	34-38 in
Frost-free period (average)	125 days
Freeze-free period (average)	148 days
Precipitation total (average)	36 in

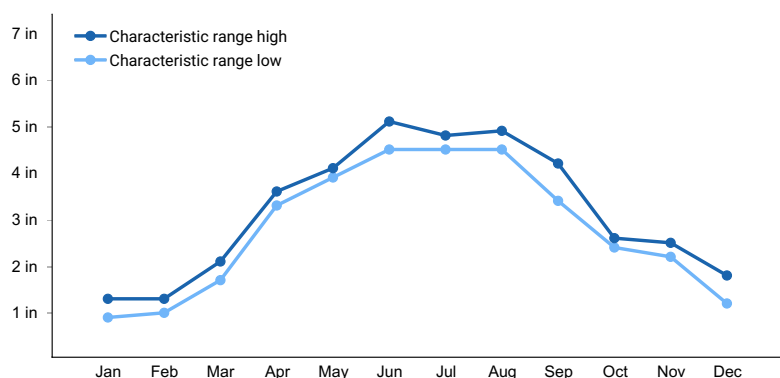


Figure 1. Monthly precipitation range

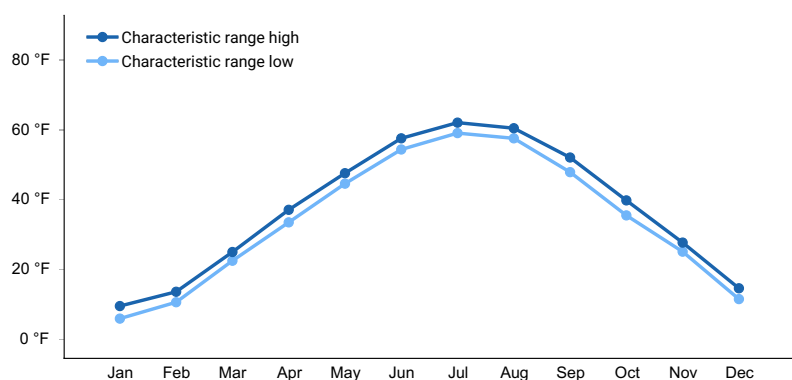


Figure 2. Monthly minimum temperature range

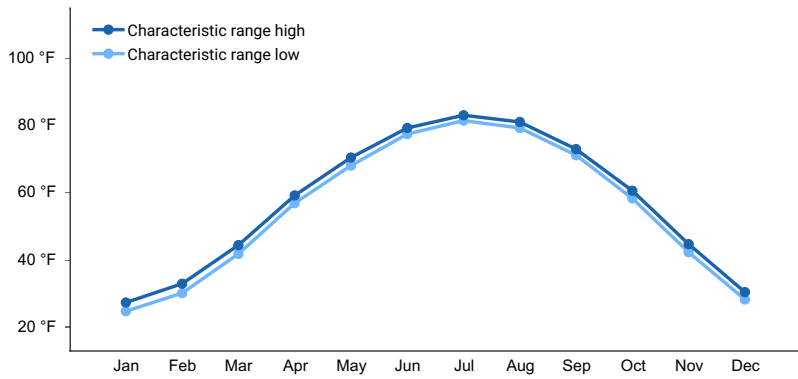


Figure 3. Monthly maximum temperature range

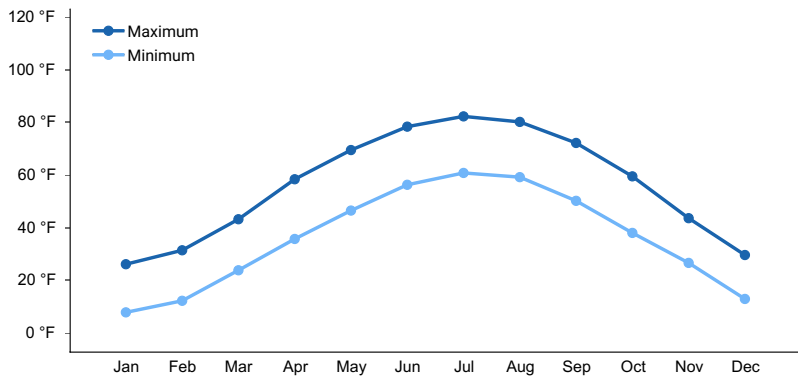


Figure 4. Monthly average minimum and maximum temperature

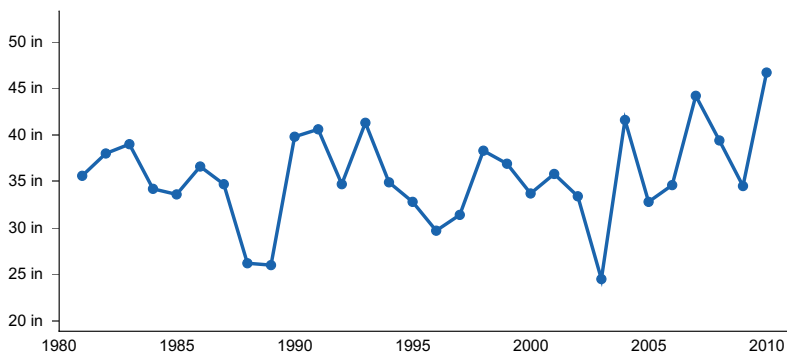


Figure 5. Annual precipitation pattern

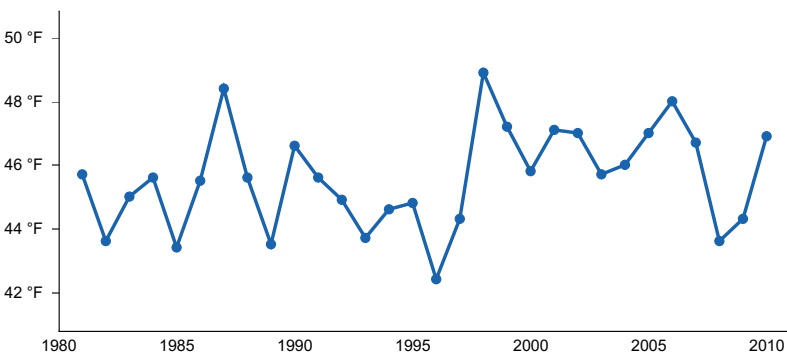


Figure 6. Annual average temperature pattern

Climate stations used

- (1) GAYS MILLS [USC00473022], Gays Mills, WI
- (2) ALMA DAM 4 [USC00470124], Alma, WI
- (3) DODGEVILLE [USC00472173], Dodgeville, WI

- (4) LA CROSSE WFO [USC00474373], La Crosse, WI
- (5) REEDSBURG [USC00477052], Reedsburg, WI
- (6) BLAIR [USC00470882], Blair, WI
- (7) DODGE [USC00472165], Arcadia, WI

Influencing water features

Water is received primarily through precipitation, runoff from adjacent uplands, stream inflow, and groundwater discharge. Water levels are greatly influenced by rates of precipitation and runoff from upland sites. Water leaves the site primarily through stream outflow, subsurface outflow, runoff, evapotranspiration, and groundwater recharge.

Flooding from stream inflow is a significant factor in the ecological development of floodplain sites. On most sites, the vegetation must be tolerant of frequent flooding that may persist for a month.

Under the Cowardin System of Wetland Classification, or National Wetlands Inventory (NWI), the wetlands can be classified as:

- 1) Palustrine, emergent, persistent, saturated, or
- 2) Palustrine, scrub-shrub, broad-leaved deciduous, saturated, or
- 3) Palustrine, forested, broad-leaved deciduous, saturated

Under the Hydrogeomorphic Classification System (HGM), the wetlands can be classified as:

- 1) Riverine depressional, forested/loamy-clayey, or
- 2) Riverine depressional, scrub-shrub/loamy-clayey, or
- 3) Riverine depressional, emergent/loamy-clayey

Permeability of the soil is very slow to moderately slow. The hydrological groups for this site are B/D and C/D.

Wetland description

Hydrogeomorphic Wetland Classification: Riverine depressional, forested/loamy-clayey; Riverine depressional, scrub-shrub/loamy-clayey; Riverine depressional, emergents/loamy-clayey

Cowardin Wetland Classification: PEM1B, PSS1B, PFO1B

Soil features

This site is made up of the Kalmarville, Northbend, and Root soil series. The Etrick soil series is also included in this site when flooded for long durations. Fluvaquentic Endoaquolls make up 62% of the acreage of this site. The remaining acreage is mostly Fluvaquentic Dystrudepts. Mollic Fluvaquents also make up a small portion of this site. These soils form in loamy, silty, and sometimes sandy alluvium. They generally lack bedrock contact. They may be very poorly to somewhat poorly drained. Some soils meet hydric soil requirements.

These soils have loamy surfaces and silty subsurfaces. Sandy alluvium is sometimes found underlying the silty substratum. Subsurface fragments can occupy as much as 19 percent of the substratum. These soils are extremely acid to slightly alkaline. Secondary carbonates are generally lacking in these soils, though they may be found at the surface in some Vernon County sites.

Table 4. Representative soil features

Parent material	(1) Alluvium
Surface texture	(1) Loam (2) Silt loam
Drainage class	Very poorly drained to somewhat poorly drained
Permeability class	Very slow to moderately slow
Soil depth	79 in
Surface fragment cover <=3"	0%

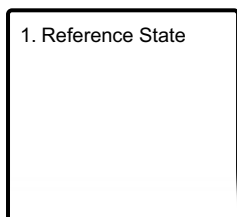
Surface fragment cover >3"	0–20%
Available water capacity (0-59.1in)	2.7–5.36 in
Calcium carbonate equivalent (0-39.4in)	0–8%
Soil reaction (1:1 water) (0-39.4in)	4.2–7.6
Subsurface fragment volume <=3" (0-39.4in)	0–19%
Subsurface fragment volume >3" (0-39.4in)	0–24%

Ecological dynamics

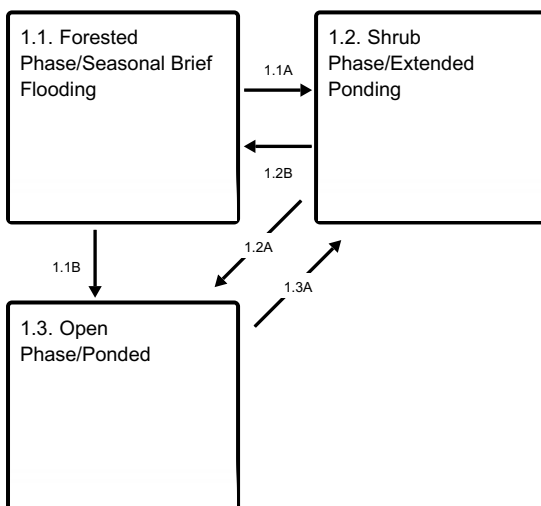
Because this Ecological Site is subject to seasonal, yearly and long-term variation in hydrological conditions, it is difficult to speak of any directional, community-driven plant succession, as is typical of more environmentally-stable upland plant communities. However, this site being on more stable broad floodplains does seem to have some successional character. Even still, individual hydrologic events create conditions temporarily favorable to a given species, or groups of species, and unfavorable to other species or groups. Species differ greatly in their ability to tolerate frequency of flooding and duration of ponding. Frequency and duration of flooding/ponding is the main driver as to which of these community phases will be achieved and maintained. In the case where only annual or seasonal flooding occurs succession could occur in a manner similar to an upland site.

State and transition model

Ecosystem states



State 1 submodel, plant communities



- 1.1A** - Ponding frequency and duration increase.
- 1.1B** - Ponding frequency and duration increase dramatically.
- 1.2B** - Very infrequent ponding.
- 1.2A** - Ponding frequency and duration increase moderately.
- 1.3A** - Ponding frequency and duration decrease.

State 1

Reference State

Because of the dynamic nature of hydrological events affecting this Ecological Site, many different plant communities can be found at any given time. Three distinct community phases represent the Reference state: 1) a forested phase with seasonal, brief flooding, community phase, 2) rejuvenated forest phase with intermediate flooding community phase, and 3) open phase frequently flooded community phase.

Community 1.1

Forested Phase/Seasonal Brief Flooding



This community phase consists of forest communities tolerant of seasonal, brief flooding. Such forests are characterized by strong presence, or dominance of black ash (*Fraxinus nigra*), with various associates (elms, hickories, silver maple, swamp white oak). The shrub layer is not well developed. Characteristic understory plants include sedges, grasses, sensitive fern and jewelweed (*Impatiens capensis*).

Dominant plant species

- black ash (*Fraxinus nigra*), tree
- elm (*Ulmus*), tree
- silver maple (*Acer saccharinum*), tree
- gray alder (*Alnus incana*), shrub
- dogwood (*Cornus*), shrub
- sedge (*Carex*), grass
- jewelweed (*Impatiens capensis*), other herbaceous
- sensitive fern (*Onoclea sensibilis*), other herbaceous

Community 1.2

Shrub Phase/Extended Ponding

This community phase is dominated by Silver maple, black willow, river birch, and other species tolerant of extended flooding or rapidly growing in the place of other tree mortality. The understory is dominated by sedges and grasses with a presence of jewelweed and sensitive fern.

Dominant plant species

- silver maple (*Acer saccharinum*), shrub
- black willow (*Salix nigra*), shrub
- river birch (*Betula nigra*), shrub
- sedge (*Carex*), grass
- jewelweed (*Impatiens capensis*), other herbaceous
- sensitive fern (*Onoclea sensibilis*), other herbaceous

Community 1.3

Open Phase/Ponded



This community is dominated by sedges and grasses with a few very tolerant associates and sporadic willows. These sites often have standing water throughout the growing season.

Dominant plant species

- willow (*Salix*), tree
- sedge (*Carex*), grass

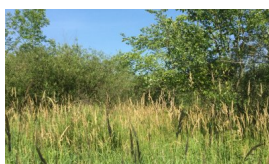
Pathway 1.1A Community 1.1 to 1.2

Increase in flooding frequency and duration. Mortality of canopy species.

Pathway 1.1B Community 1.1 to 1.3



Forested Phase/Seasonal Brief Flooding



Open Phase/Ponded

Ponding frequency and duration increase dramatically.

Pathway 1.2B Community 1.2 to 1.1

Decrease in ponding frequency and duration. Establishment of black ash and associates.

Pathway 1.2A

Community 1.2 to 1.3

Ponding frequency and duration increase moderately.

Pathway 1.3A

Community 1.3 to 1.2

Decrease in flooding frequency and duration. Establishment of silver maple and other species tolerant of some extended ponding events.

Additional community tables

Inventory data references

Plot and other supporting inventory data for site identification and community phases is located on a NRCS North Central Region shared and one drive folder. University of Wisconsin-Stevens Point described soils, took photographs, and inventoried vegetation data at community phases within the reference state. The data sources include WI ESD Plot Data Collection Form - Tier 2, Releve Method, NASIS pedon description, NRCS SOI 036, photographs, and Kotar Habitat Types.

Other references

Cleland, D.T.; Avers, P.E.; McNab, W.H.; Jensen, M.E.; Bailey, R.G., King, T.; Russell, W.E. 1997. National Hierarchical Framework of Ecological Units. Published in, Boyce, M. S.; Haney, A., ed. 1997. Ecosystem Management Applications for Sustainable Forest and Wildlife Resources. Yale University Press, New Haven, CT. pp. 181-200.

Curtis, J.T. 1959. Vegetation of Wisconsin: an ordination of plant communities. University of Wisconsin Press, Madison. 657 pp.

Finley, R. 1976. Original vegetation of Wisconsin. Map compiled from U.S. General Land Office notes. U.S. Forest Service, North Central Forest Experiment Station, St. Paul, Minnesota.

NatureServe. 2018. International Ecological Classification Standard: Terrestrial Ecological Classifications. NatureServe Central Databases. Arlington, VA. U.S.A. Data current as of 28 August 2018.

Kotar, J., J. A. Kovach, and T. L. Burger. 2002. A Guide to Forest Communities and Habitat Types of Northern Wisconsin. Second edition. University of Wisconsin-Madison, Department of Forest Ecology and Management, Madison.

Kotar, J., J. A. Kovach, and T. L. Burger. 1996. A Guide to Forest Communities and Habitat Types of Southern Wisconsin. University of Wisconsin-Madison, Department of Forest Ecology and Management, Madison.

Kotar, J., and T. L. Burger. 2017. Wetland Forest Habitat Type Classification System for Northern Wisconsin: A Guide for Land Managers and landowners. Wisconsin Department of Natural Resources, PUB-FR-627 2017, Madison.

Schulte, L.A., and D.J. Mladenoff. 2001. The original U.S. public land survey records: their use and limitations in reconstructing pre-European settlement vegetation. *Journal of Forestry* 99:5–10.

Schulte, L.A., and D.J. Mladenoff. 2005. Severe wind and fire regimes in northern forests: historical variability at the regional scale. *Ecology* 86(2):431–445.

Schulte, L.A., and D.J. Mladenoff. 2005. Severe wind and fire regimes in northern forests: historical variability at the regional scale. *Ecology* 86(2):431–445.

United States Department of Agriculture, Natural Resources Conservation Service. 2006. Land Resource and Major

Land Resource Areas of the United States, the Caribbean, and the Pacific Basin. U.S. Department of Agriculture Handbook 296.

Wisconsin Department of Natural Resources. 2015. The ecological landscapes of Wisconsin: An assessment of ecological resources and a guide to planning sustainable management. Wisconsin Department of Natural Resources, PUB-SS-1131 2015, Madison.

Contributors

Jacob Prater, Associate Professor at University of Wisconsin Stevens Point
Bryant Scharenbroch, Assistant Professor at University of Wisconsin Stevens Point
John Kotar, Ecological Specialist Independent Contractor

Approval

Suzanne Mayne-Kinney, 2/23/2024

Acknowledgments

NRCS contracted UWSP to write ecological sites in MLRA 105. Completed in 2021.

Rangeland health reference sheet

Interpreting Indicators of Rangeland Health is a qualitative assessment protocol used to determine ecosystem condition based on benchmark characteristics described in the Reference Sheet. A suite of 17 (or more) indicators are typically considered in an assessment. The ecological site(s) representative of an assessment location must be known prior to applying the protocol and must be verified based on soils and climate. Current plant community cannot be used to identify the ecological site.

Author(s)/participant(s)	
Contact for lead author	
Date	04/25/2024
Approved by	Suzanne Mayne-Kinney
Approval date	
Composition (Indicators 10 and 12) based on	Annual Production

Indicators

1. **Number and extent of rills:**

2. **Presence of water flow patterns:**

3. **Number and height of erosional pedestals or terracettes:**

4. **Bare ground from Ecological Site Description or other studies (rock, litter, lichen, moss, plant canopy are not bare ground):**

5. **Number of gullies and erosion associated with gullies:**

6. **Extent of wind scoured, blowouts and/or depositional areas:**

7. **Amount of litter movement (describe size and distance expected to travel):**

8. **Soil surface (top few mm) resistance to erosion (stability values are averages - most sites will show a range of values):**

9. **Soil surface structure and SOM content (include type of structure and A-horizon color and thickness):**

10. **Effect of community phase composition (relative proportion of different functional groups) and spatial distribution on infiltration and runoff:**

11. **Presence and thickness of compaction layer (usually none; describe soil profile features which may be mistaken for compaction on this site):**

12. **Functional/Structural Groups (list in order of descending dominance by above-ground annual-production or live foliar cover using symbols: >>, >, = to indicate much greater than, greater than, and equal to):**

Dominant:

Sub-dominant:

Other:

Additional:

13. **Amount of plant mortality and decadence (include which functional groups are expected to show mortality or decadence):**

14. **Average percent litter cover (%) and depth (in):**

15. **Expected annual annual-production (this is TOTAL above-ground annual-production, not just forage annual-production):**

16. **Potential invasive (including noxious) species (native and non-native). List species which BOTH characterize degraded states and have the potential to become a dominant or co-dominant species on the ecological site if**

their future establishment and growth is not actively controlled by management interventions. Species that become dominant for only one to several years (e.g., short-term response to drought or wildfire) are not invasive plants. Note that unlike other indicators, we are describing what is NOT expected in the reference state for the ecological site:

17. Perennial plant reproductive capability:
