

Ecological site RX141X504 Enriched Loamy Cove

Last updated: 10/03/2024
Accessed: 11/14/2024

General information

Provisional. A provisional ecological site description has undergone quality control and quality assurance review. It contains a working state and transition model and enough information to identify the ecological site.

MLRA notes

Major Land Resource Area (MLRA): 141X–Tug Hill Plateau

MLRA 141 is entirely in New York and makes up about 1,173 square kilometers (3,037 square kilometers). It consists of a relatively small but unique upland that lies just off the eastern end of Lake Ontario and west of the Black River Valley and Adirondack Mountain region. It is essentially a north- and east-facing glaciated cuesta scarp and is underlain by thick Wisconsin till and small areas of outwash. Most of the plateau is woodland, so forestry and recreation are the primary uses, but small isolated dairy operations and hobby farms are located around the perimeter.

The area is bordered on the east by the Black River Valley, on the north by the St. Lawrence Lowland, on the west by the Ontario Lowland, and on the south by the Upper Mohawk Valley. The northern and eastern boundaries of MLRA 141 are distinct where they contact the physiographically dissimilar southwestern part of MLRA 142 (St. Lawrence-Champlain Plain). The western and southern boundaries are also distinct where they contact the physiographically dissimilar MLRA 101 (Ontario-Erie Plain and Finger Lakes Region).

Ecological site concept

This site occurs in well-drained coves, drainageways, and other protected areas where nutrients accumulate. These are typically small inclusions within larger hardwood stands and are often not mapped as major soil components. However, the soils and vegetation are distinctive, with a thick dark-colored mineral horizon at the surface indicating high organic matter inputs. White ash, sugar maple, and yellow birch are often abundant on this site.

Table 1. Dominant plant species

Tree	(1) <i>Fraxinus americana</i> (2) <i>Acer saccharum</i>
Shrub	Not specified
Herbaceous	Not specified

Legacy ID

F141XY504NY

Physiographic features

Table 2. Representative physiographic features

Landforms	(1) Delta (2) Outwash plain (3) Terrace (4) Drumlinoid ridge (5) Hill (6) Till plain
Elevation	76–400 m
Water table depth	183 cm
Aspect	Aspect is not a significant factor

Climatic features

Throughout the year precipitation is evenly distributed around most of this area with slightly less rainfall occurring around the lower margins of the plateau. Rainfall occurs as high-intensity, convective thunderstorms during the summer. Lake-effect snowfall is heavy from late autumn to early spring with the summit of the plateau having the lowest temperatures and the shortest freeze-free periods.

Climate stations Watertown and Old Forge are adjacent to the MLRA and were used to tabulate additional representative climate data.

Table 3. Representative climatic features

Frost-free period (characteristic range)	92-124 days
Freeze-free period (characteristic range)	129-159 days
Precipitation total (characteristic range)	1,194-1,346 mm
Frost-free period (actual range)	86-131 days
Freeze-free period (actual range)	119-164 days
Precipitation total (actual range)	1,118-1,448 mm
Frost-free period (average)	108 days
Freeze-free period (average)	143 days
Precipitation total (average)	1,270 mm

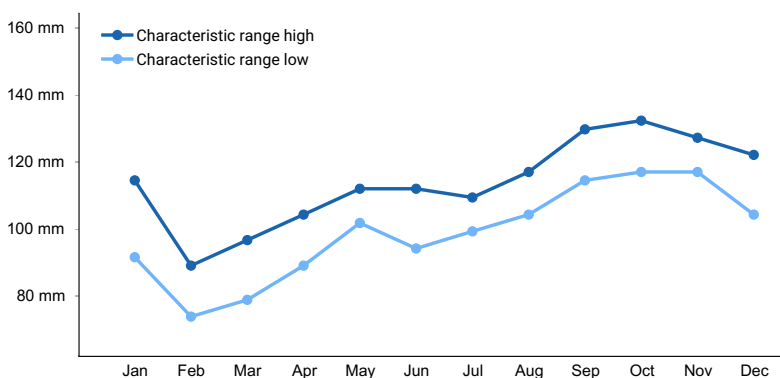


Figure 1. Monthly precipitation range

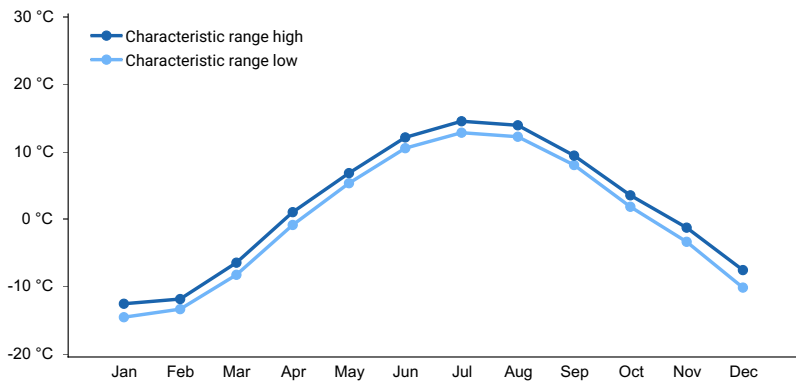


Figure 2. Monthly minimum temperature range

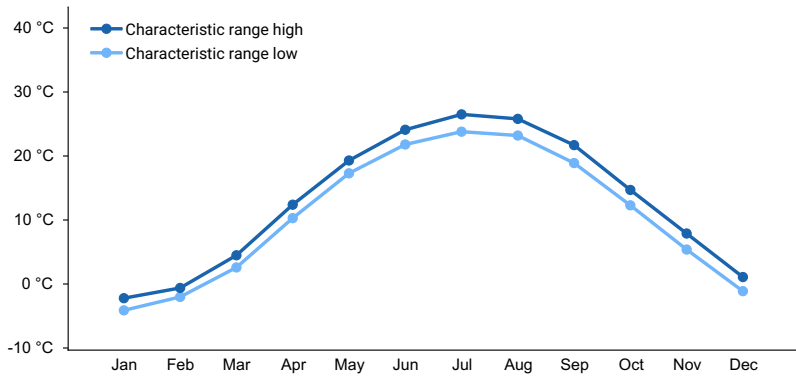


Figure 3. Monthly maximum temperature range

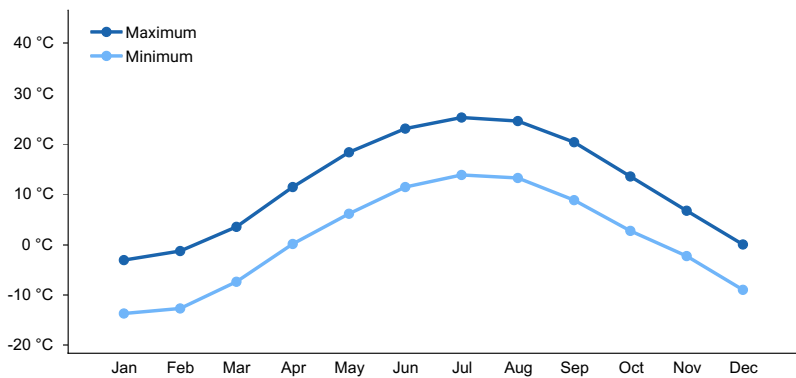


Figure 4. Monthly average minimum and maximum temperature

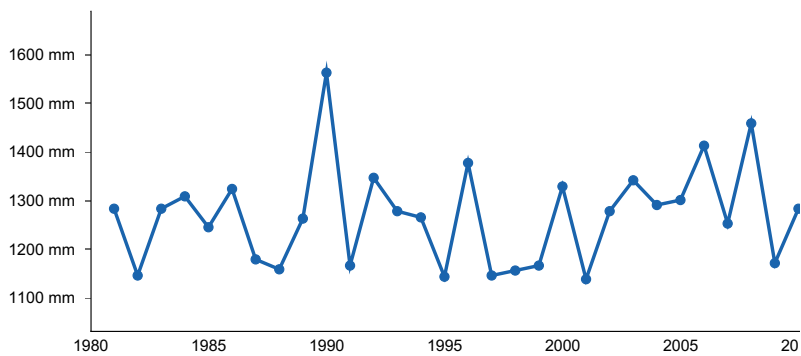


Figure 5. Annual precipitation pattern

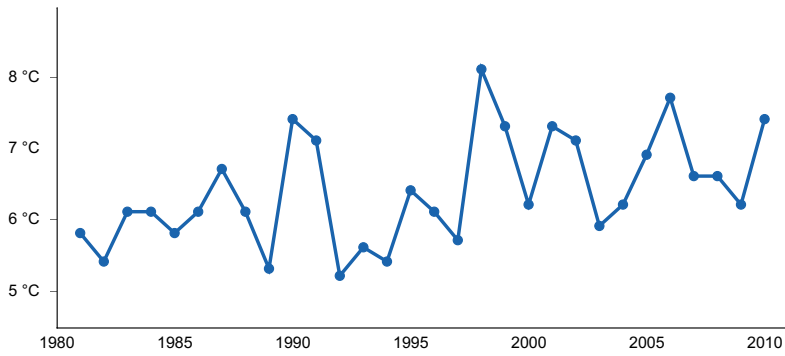


Figure 6. Annual average temperature pattern

Climate stations used

- (1) BOONVILLE 4 SSW [USC00300785], Boonville, NY
- (2) CAMDEN [USC00301110], Camden, NY
- (3) WATERTOWN [USC00309000], Watertown, NY
- (4) OLD FORGE [USC00306184], Eagle Bay, NY

Influencing water features

Soil features

Table 4. Representative soil features

Parent material	(1) Glaciofluvial deposits (2) Glaciofluvial deposits
Surface texture	(1) Gravelly loam (2) Gravelly sand
Drainage class	Well drained
Permeability class	Very slow to moderate
Soil depth	183 cm
Surface fragment cover <=3"	0%
Surface fragment cover >3"	0%
Available water capacity (7.6-15.2cm)	Not specified
Soil reaction (1:1 water) (11.4-21.3cm)	Not specified
Subsurface fragment volume <=3" (17.8-50.8cm)	Not specified
Subsurface fragment volume >3" (7.6-50.8cm)	Not specified

Ecological dynamics

[Caveat: The vegetation information contained in this section and is only provisional, based on concepts, and future projects support validation through field work. *] The vegetation groupings described in this section are based on the terrestrial ecological system classification and vegetation associations developed by NatureServe (Comer 2003) and localized associations provided by the New York Natural Heritage Program (Edinger et al. 2014).

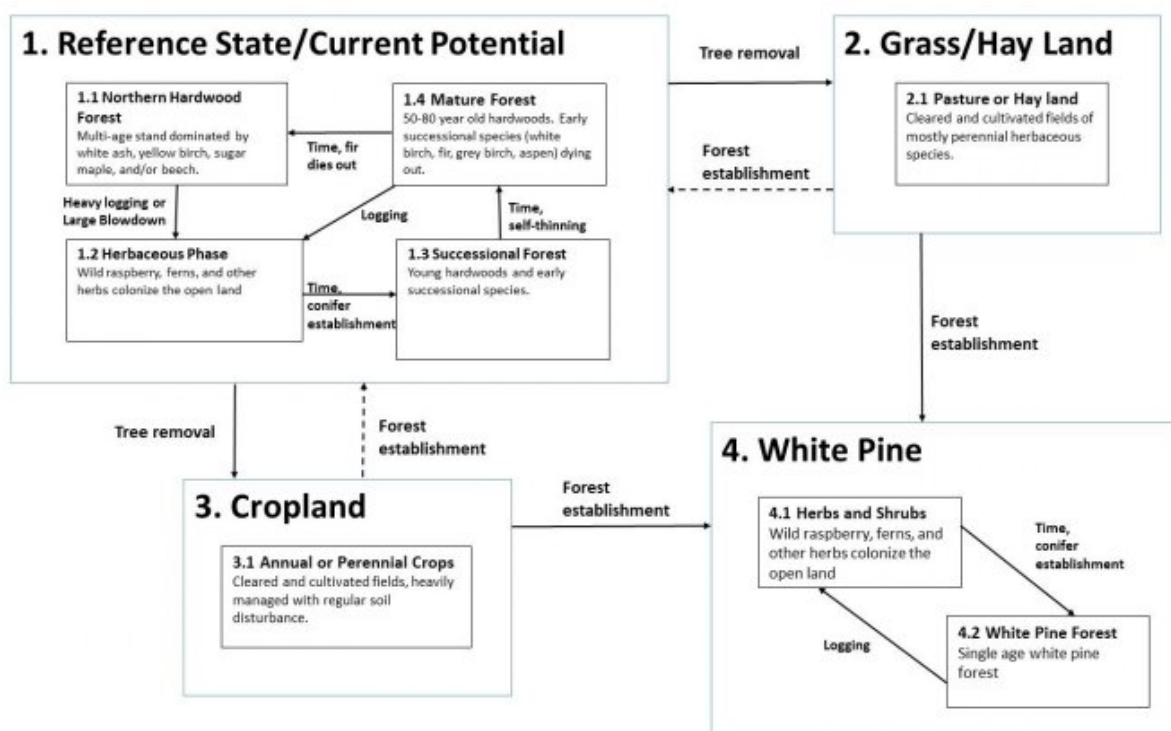
Northern hardwoods dominate this site, particularly white ash, yellow birch, sugar maple and beech. Enriched site indicators (such as blue cohosh and maidenhair fern) are common on this site.

Treethrow and logging are the most common disturbances affecting this site. The site is resilient following these disturbances and succeeds through an herbaceous and shrubby phase prior to tree establishment and eventual return to the reference community. The young forest stands include several species not typically dominant in the reference community, including pin cherry, white birch, aspen, balsam fir, etc.

On gentler slopes, this site may be cultivated for crop or pasture. When cropland or pastureland management ceases, the site either returns to northern hardwoods or may transition to a white pine forest. Once white pine is established, it tends to form a single age stand with low diversity and little understory.

State and transition model

F141XY504ME – Enriched Loamy Cove



Inventory data references

Future work is needed, as described in a future project plan, to validate the information presented in this provisional ecological site description. Future work includes field sampling, data collection and analysis by qualified vegetation ecologists and soil scientists. As warranted, annual reviews of the project plan can be conducted by the Ecological Site Technical Team. A final field review, peer review, quality control, and quality assurance reviews of the ESD are necessary to approve a final document.

Other references

Comer, P., D. Faber-Langendoen, R. Evans, S. Grawler, C. Josse, G. Kittel, S. Menard, M. Pyne, M. Reid, K. Schultz, K. Snow, and J. Teague. 2003. Ecological Systems of the United States: A Working Classification of U.S. Terrestrial Systems. NatureServe, Arlington, Virginia

Edinger, G. J., D. J. Evans, S. Gebauer, T. G. Howard, D. M. Hunt, and A. M. Olivero (editors). 2014. Ecological Communities of New York State. Second Edition. A revised and expanded edition of Carol Reschke's Ecological Communities of New York State. New York Natural Heritage Program, New York State Department of Environmental Conservation, Albany, NY.

Gawler, S. and A. Cutko. 2010. Natural Landscapes of Maine: A Guide to Natural Communities and Ecosystems. Maine Natural Areas Program, Maine Department of Conservation, Augusta, Maine.

NatureServe. 2021. NatureServe Explorer: An online encyclopedia of life [web application]. NatureServe, Arlington, Virginia. <https://explorer.natureserve.org/>. (accessed 10 July. 2021).

Soil Survey Staff, Natural Resources Conservation Service, United States Department of Agriculture. 2006. Land Resource Regions and Major Land Resource Areas of the United States, the Caribbean, and the Pacific Basin. Agricultural Handbook 296

Soil Survey Staff, Natural Resources Conservation Service, United States Department of Agriculture. Official Soil Series Descriptions. Available online. (accessed 11 Aug. 2021).

Soil Survey Staff, Natural Resources Conservation Service, United States Department of Agriculture. Soil Climate Research Station Data. Available online. (accessed 23 June. 2021).

Soil Survey Staff, Natural Resources Conservation Service, United States Department of Agriculture. Soil Survey Geographic (SSURGO) Database for [MLRA 141, Maine]. Available online. (accessed 14 Oct. 2021).

USNVC [United States National Vegetation Classification]. 2017. United States National Vegetation Classification Database V2.01. Federal Geographic Data Committee, Vegetation Subcommittee, Washington DC. Available The U.S. National Vegetation Classification (usnvc.org) (accessed 2 July. 2021).

Contributors

Christopher Mann

Approval

Greg Schmidt, 10/03/2024

Acknowledgments

Nels Barrett and Nick Butler provided considerable review of this ecological site concept.

Rangeland health reference sheet

Interpreting Indicators of Rangeland Health is a qualitative assessment protocol used to determine ecosystem condition based on benchmark characteristics described in the Reference Sheet. A suite of 17 (or more) indicators are typically considered in an assessment. The ecological site(s) representative of an assessment location must be known prior to applying the protocol and must be verified based on soils and climate. Current plant community cannot be used to identify the ecological site.

Author(s)/participant(s)	
Contact for lead author	
Date	11/14/2024
Approved by	Greg Schmidt
Approval date	
Composition (Indicators 10 and 12) based on	Annual Production

Indicators

1. **Number and extent of rills:**

-
2. **Presence of water flow patterns:**
-
3. **Number and height of erosional pedestals or terracettes:**
-
4. **Bare ground from Ecological Site Description or other studies (rock, litter, lichen, moss, plant canopy are not bare ground):**
-
5. **Number of gullies and erosion associated with gullies:**
-
6. **Extent of wind scoured, blowouts and/or depositional areas:**
-
7. **Amount of litter movement (describe size and distance expected to travel):**
-
8. **Soil surface (top few mm) resistance to erosion (stability values are averages - most sites will show a range of values):**
-
9. **Soil surface structure and SOM content (include type of structure and A-horizon color and thickness):**
-
10. **Effect of community phase composition (relative proportion of different functional groups) and spatial distribution on infiltration and runoff:**
-
11. **Presence and thickness of compaction layer (usually none; describe soil profile features which may be mistaken for compaction on this site):**
-
12. **Functional/Structural Groups (list in order of descending dominance by above-ground annual-production or live foliar cover using symbols: >>, >, = to indicate much greater than, greater than, and equal to):**
- Dominant:
- Sub-dominant:
- Other:
- Additional:
-
13. **Amount of plant mortality and decadence (include which functional groups are expected to show mortality or decadence):**

14. **Average percent litter cover (%) and depth (in):**

15. **Expected annual annual-production (this is TOTAL above-ground annual-production, not just forage annual-production):**

16. **Potential invasive (including noxious) species (native and non-native). List species which BOTH characterize degraded states and have the potential to become a dominant or co-dominant species on the ecological site if their future establishment and growth is not actively controlled by management interventions. Species that become dominant for only one to several years (e.g., short-term response to drought or wildfire) are not invasive plants. Note that unlike other indicators, we are describing what is NOT expected in the reference state for the ecological site:**

17. **Perennial plant reproductive capability:**
