

Ecological site F144BY304ME Wet Clay Flat

Last updated: 6/29/2020
Accessed: 05/18/2024

General information

Provisional. A provisional ecological site description has undergone quality control and quality assurance review. It contains a working state and transition model and enough information to identify the ecological site.

MLRA notes

Major Land Resource Area (MLRA): 144B—New England and Eastern New York Upland, Northern Part

Major Land Resource Area (MLRA): 144B—New England and Eastern New York Upland, Northern Part

This major land resource area (MLRA) is characterized by plateaus, plains, and mountains. The climate is generally cool and humid with an average annual precipitation of 34 to 62 inches (865 to 1,575 millimeters). The average annual air temperature is typically 40 to 48 degrees F (4 to 9 degrees C). The freeze-free period generally is 130 to 200 days, but it ranges from 110 days in the higher mountains to 240 days in some areas along the Atlantic coast. The soils in this region are dominantly Entisols, Spodosols, and Inceptisols. They commonly have a fragipan. The dominant suborders are Ochrepts, Orthods, Aquepts, Fluvents, and Saprists. The soils in the region dominantly have a frigid soil temperature regime with some cryic areas at higher elevation, a udic soil moisture regime, and mixed mineralogy. Most of the land is forested, and 98 percent is privately owned. Significant amounts of forest products are produced including lumber, pulpwood, Christmas trees, and maple syrup. Principal agricultural crops include forage and grains for dairy cattle, potatoes, apples, and blueberries. Wildlife habitat and recreation are important land uses. Stoniness, steep slopes, and poor drainage limit the use of many of the soils.

Classification relationships

NRCS:

Land Resource Region: R—Northeastern Forage and Forest Region

MLRA: 144B—New England and Eastern New York Upland, Northern Part MLRA resources

Major Land Resource Area (MLRA): 144B—New England and Eastern New York Upland, Northern Part

Ecological site concept

This ecological site is found on the frigid, poorly- and very poorly-drained, non-acidic, glacio-marine deposits in coastal and central interior marine terraces and river valleys. Northern white cedar inland or red and black spruce on the coast, are the dominant trees found on forested states and community phases of the ecological site. Other tree species that may commonly occur include red maple, balsam fir, black ash, and tamarack. On non-forested, permanently ponded, sites, alder, grasses, and sedges are common. This site is intermittently ponded and has a permanent high water table within 12 inches of the surface. The slow to very slow permeability in the sub-soil in relation to the relative linear landscape positions these soils are found on, results in the accumulation of 8 to 16 inches of organic matter at the surface and the high water table.

The reference state is considered a Palustrine forested wetland in the Cowardin Wetland Classification System (Cowardin et al. 1979) and a Mineral Soil Flat in the Hydrogeomorphic (HGM) Wetland Classification System (Brinson, M.M. 1993). Due to some micro-relief, pit and mound mostly, this site sometimes occurs as a major component of associations and complexes with drier mineral soils. A majority of the acreage is mapped as consociations. The reference plant community is dominantly hydrophytic vegetation.

Associated sites

F144BY401ME	Clay Flat The somewhat poorly- and poorly-drained Clay Flat site often occurs upslope of the poorly- and very poorly-drained Wet Clay Flat site
F144BY402ME	Clay Hills The very poorly- and poorly-drained Clay Flat site may occur downslope of the moderately well- and well-drained Clay Hills site.

Table 1. Dominant plant species

Tree	Not specified
Shrub	Not specified
Herbaceous	Not specified

Physiographic features

This site is found on flat lake plains and terraces within coastal lowlands and river valleys. Slope is generally from 0 to 3 percent, and depth to a seasonal high water table is less than 6 inches. These soils are not subject to flooding, but may be ponded for long periods in low depressions, up to 4 inches deep. These sites are found from 0 to 1200 feet in elevation.

Table 2. Representative physiographic features

Landforms	(1) Marine terrace (2) Lake plain
Flooding frequency	None
Ponding duration	Long (7 to 30 days)
Ponding frequency	None to frequent
Elevation	0–366 m
Slope	0–3%
Ponding depth	0–10 cm
Water table depth	0–30 cm
Aspect	Aspect is not a significant factor

Climatic features

The climate is humid and temperate. It is characterized by warm summers and cold winters. The average first frost around October 1st and the last freeze of the season occurs around April 23rd. Temperature extremes in the summer can reach as high as 100 degrees F and as low as -33 degrees F in the winter. The average relative humidity is 71 percent. The sun shines on average 57 percent of the time. Bad storm events can come in from the northeast, thus the term “nor’easter”. Winter blizzards can result in several feet of snow, while summer hurricane events can produce 2-3 inches of rain per hour. Annual rainfall occurs quite evenly over the entire year with August being the driest month during the growing season from April through September. Rainfall during this period generally falls during thunderstorms, and fairly large amounts of rain may fall in a short time. Eighty-eight percent of the snowfall occurs from December through March and average total snowfall is 64 inches per year. This makes for a “mud season” from March through April where runoff is high and ponding may occur because surface water runoff is very slow. The original data used in developing the table below was obtained from the USDA-NRCS National Water & Climate Center climate information database. All the climate station monthly averages for maximum and minimum temperature and precipitation were then added together and averaged to make this table. The precipitation and temperature data come from the years 1981 through 2010.

Table 3. Representative climatic features

Frost-free period (characteristic range)	117-140 days
Freeze-free period (characteristic range)	144-170 days
Precipitation total (characteristic range)	1,067-1,219 mm
Frost-free period (actual range)	98-146 days
Freeze-free period (actual range)	133-180 days
Precipitation total (actual range)	1,016-1,372 mm
Frost-free period (average)	126 days
Freeze-free period (average)	159 days
Precipitation total (average)	1,168 mm

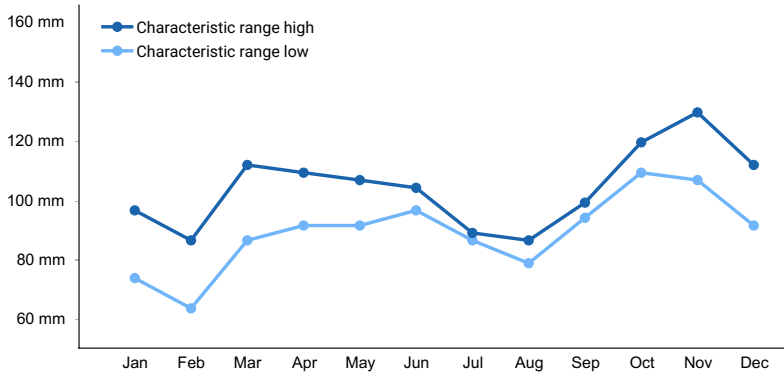


Figure 1. Monthly precipitation range

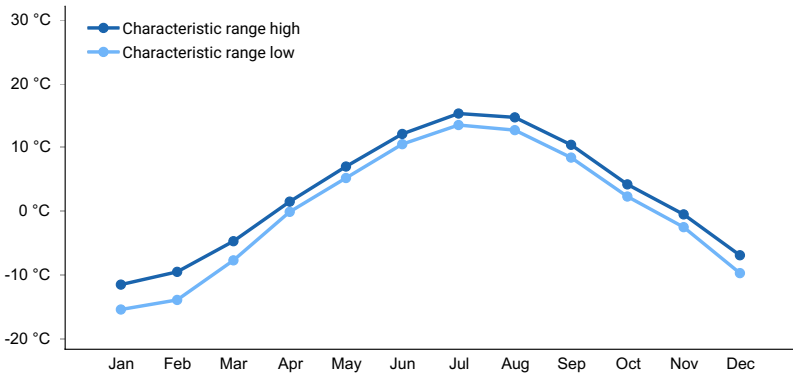


Figure 2. Monthly minimum temperature range

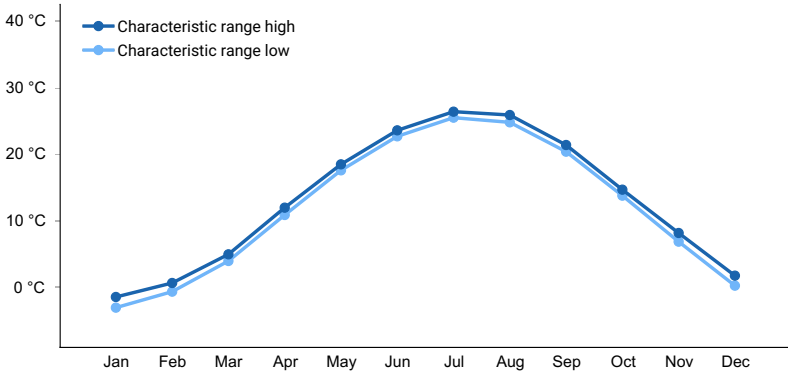


Figure 3. Monthly maximum temperature range

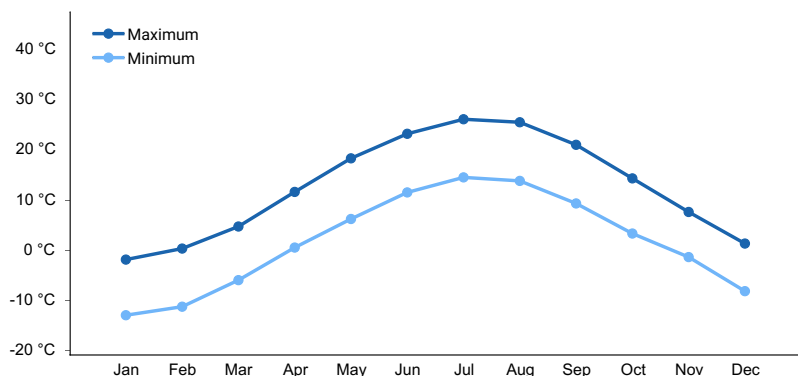


Figure 4. Monthly average minimum and maximum temperature

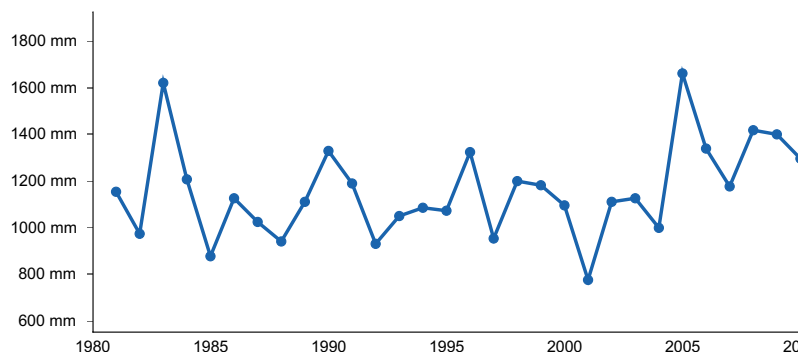


Figure 5. Annual precipitation pattern

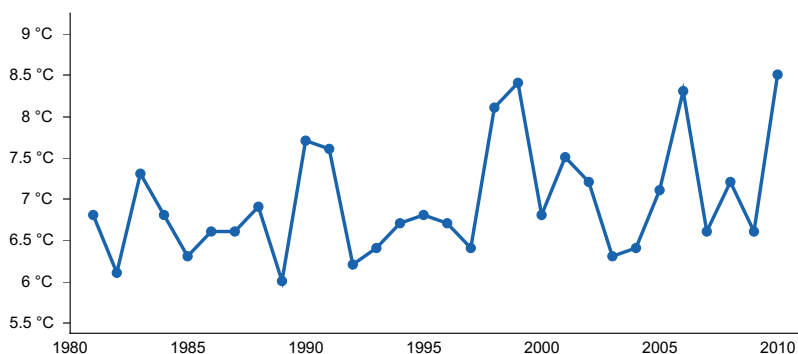


Figure 6. Annual average temperature pattern

Climate stations used

- (1) BELFAST [USC00170480], Belfast, ME
- (2) ACADIA NP [USC00170100], Bar Harbor, ME
- (3) CORINNA [USC00171628], Corinna, ME
- (4) DOVER-FOXCROFT WWTP [USC00171975], Dover Foxcroft, ME
- (5) FARMINGTON [USC00172765], Farmington, ME
- (6) GARDINER [USC00173046], Gardiner, ME
- (7) JONESBORO [USC00174183], Addison, ME
- (8) LEWISTON [USC00174566], Auburn, ME
- (9) MADISON [USC00174927], Anson, ME
- (10) NEWCASTLE [USC00175675], Newcastle, ME
- (11) ORONO [USC00176430], Old Town, ME
- (12) WATERVILLE TRTMT PLT [USC00179151], Waterville, ME
- (13) WEST ROCKPORT 1 NNW [USC00179593], Rockport, ME
- (14) AUGUSTA STATE AP [USW00014605], Augusta, ME
- (15) BANGOR INTL AP [USW00014606], Bangor, ME
- (16) PORTLAND INTL JETPORT [USW00014764], Portland, ME

Influencing water features

This site has no discernible surface-water inlet, and sources of water are from precipitation, overland flow, ground-water discharge from adjacent uplands, and shallow seepage from adjacent uplands (“interflow”). Water drains from these wetlands through intermittent or perennial streams, ground-water recharge, and (or) evapotranspiration. The water table is at the surface all times of the year and drainage is poor to very poor. This site is considered either semi-closed, riverine-tidal, or mineral soil flat wetland under the Hydrogeomorphic Wetland Classification System.

Wetland description

Cowardin System

Palustrine Forested Wetland

Soil features

The soils of this site are very deep, more than 60 inches to bedrock, and characterized by high percentages of silt and clay and low or non-existent volumes of rock fragments. Forested sites typically have a surface layer of 12 inches of mucky peat or muck, which is derived primarily from woody fragments. The thickness of the organic matter on some sites can range from 20 to 40 cm (8 to 16 inches) thick. Parent material is silty and clayey glacio-marine, or glacio-lacustrine deposits.

Though the soil is commonly free of rock fragments, a few samples contained up to 1 percent gravel. Stones are usually absent from the surface, but in some areas stone cover can be as high as 2 percent.

The soils of this site are olive gray, very deep silt loams, silty clay loams, or loams, with silty clay loam, silty clay or clay in the deeper horizons. Redoximorphic features are distinct or prominent throughout the mineral profile. Stone fragments and bedrock sometime occur in the profile at the Eg and Bg horizons or outcrop on the soil surface, but not to the extent that they impede the production of native vegetation. On unaltered sites, pit and mound topography maybe present, with drier or wetter soils present as minor components.

These soils have a non-acidic feature in that they have a pH that is 5.0 or more in 0.01M calcium chloride in at least some part of the control section (10 to 40 inches) of the soil profile.

The poor and very poor drainage classes, with intermittent ponding, and the silty and clayey soil textures have the most influence on plant community composition.



Figure 7.

Table 4. Representative soil features

Parent material	(1) Glaciomarine deposits
Surface texture	(1) Silty clay (2) Clay
Drainage class	Poorly drained to very poorly drained

Permeability class	Moderately slow to very slow
Soil depth	0–152 cm
Surface fragment cover <=3"	0%
Surface fragment cover >3"	0–2%
Available water capacity (Depth not specified)	10.67–35.31 cm
Soil reaction (1:1 water) (Depth not specified)	4.5–7.3
Subsurface fragment volume <=3" (Depth not specified)	0–3%
Subsurface fragment volume >3" (Depth not specified)	0%

Ecological dynamics

The information contained in the State and Transition Model (STM) and the Ecological Site Description were developed using archeological and historical data, professional experience, and scientific studies. The information presented is representative of a very complex set of plant communities. Not all scenarios or plants are included. Key indicator plants, animals and ecological processes are described to inform land management decisions.

The historic reference plant community phase of this site is perceived to be an uneven-aged mixing of temperate deciduous and boreal species, called the “Acadian Forest”. This forest consisted of long-lived, shade-tolerant species with small gaps and relatively infrequent severe disturbances. Due to the multiple (8) biophysical regions involved and the history of land use and management, which involved over 95 percent of the MLRA land area, a least disturbed climax plant community phase will be considered the reference state for this ecological site description. The least disturbed climax state is a mixed conifer-hardwood forest.

Before European settlement, which occurred in the early 1600s, the plant community phase on this site consisted of an uneven-aged mixing of southern temperate deciduous and northern boreal species. This forest consisted of long-lived, shade-tolerant species with small gaps and relatively infrequent severe disturbances, from 0.6 to 1.0 percent per area per year. Dominant tree species were hemlock and spruce with a scattering of pines and cedar with some ash and oak according to early settlement survey records (Barton et al., 2012). In forested wetlands along the mid- and downeast coast, dominant tree species included spruce, birches, and alder with smaller amounts of pine, fir, maple, oak, beech, and hemlock, which is similar to present-day vegetation composition (Barton et al., 2012). The pre-settlement forest stands were generally between 104 to 203 years old in the oldest stands. Presettlement natural disturbances were usually small, single-tree mortality events caused by wind or insect damage, rather than stand replacing events. Stand replacing events include huge fires on average every 1,461 years and major wind storms, such as hurricanes, on average every 3,289 years. Extensive insect outbreaks, such as the spruce budworm infestation, were recorded as occurring every 60 to 70 years (Barton et al., 2012). During present day times, these natural disturbances still occur within these intervals of time.

The reference state (1.1), northern white cedar/three-seeded sedge (*Thuja occidentalis/ Carex trisperma*) is forested. Because of the constant harvesting of the forest and the composition of the data collected from representative sites, it was not possible to differentiate between a possible more mature and younger phase. The reference plant community phase has many of the same attributes, including species composition and structure, as the historic reference plant community phase. The site has a moderate to dense canopy cover, 75 to 95 percent, of a stratified mixture of even-aged conifer and northern hardwood tree species. Northern white cedar (*Thuja occidentalis*) is the major tree component with other codominant or intermediate species such as red spruce (*Picea rubens*), which occurs as a dominant tree on coastal sites. Red maple (*Acer rubrum*) and balsam fir (*Abies balsamea*) are usually in the suppressed understory. Some sites may contain black spruce (*Picea mariana*), and tamarack (*Larix laricina*). Some sites contain only red spruce and/or red maple depending on the geographic location within the MLRA and previous forest management.

The understory vegetation is very sparse due to the dense overstory cover except for very small open areas, less than a 0.1 of an acre, where a wide variety of forbs, ferns, and shrubs grow. The ground cover occurs within a

typical pit and mound microtopography. Under the dense conifer overstory, only small scattered shade-tolerant and moisture-loving plants grow. Many species of feather-moss grow over the ground, on dead wood, and the bottoms of trees. Tall shrubs are virtually non-existent in this dense, shady, understory. In the small open areas, taller shrubs, such as common winterberry (*Ilex verticillata*) and speckled alder (*Alnus incana*) are present along with small shrubs such as dwarf red raspberry (*Rubus pubescens*) and wild sarsaparilla (*Aralia nudicaulis*), which occurs on the mounds. Seedlings and saplings of red maple and balsam fir are typically found in small patches. Clumps of cinnamon fern (*Osmunda cinnamomea*) as well as sensitive fern (*Onoclea sensibilis*) are also commonly found. Forbs usually found include starflower (*Trientalis borealis*) and blue-bead lily (*Clintonia borealis*) on the mounds. Very few grass or grass-like plant species were found on this site. There were more sedges than grasses and both appeared in small clumps scattered sparsely throughout. Threeseeded sedge (*Carex trisperma*) was common to abundant. Leafy liverworts were prevalent in the pits and feather mosses were common at most sample sites on the mounds. On one site skunk cabbage (*Symplocarpus foetidus*) was abundant in the pools of water.

Natural disturbances include ice and wind storms, and insect infestations that cause small gaps in the canopy. These small open areas in the forest provide an abundance of small herbs, grasses, sedges, and shrubs as well as tree regeneration for a brief period of time. Many species of medium and small sized mammals, birds, and insects can have significant influence on the plant communities in terms of pollination, herbivory, seed dispersal, and creation of local disturbance patches, all of which contribute to plant species diversity.

Human disturbances are primarily restricted to timber harvesting due to the very poor drainage. Harvesting of this reference state has been continuous over the years since European settlement, with all harvesting occurring in the winter months due to the very poorly drained nature of the soil. spruce and pine were the desirable species to harvest, mainly for timber up until about 10 years ago, although northern white cedar was used for house roofs and siding because of its resistance to decay. Presently all types of trees, including standing dead trees, are harvested for their best use depending on their size and grade. Best use includes timber, pulp, cordwood, firewood, and biomass. The ponded state (2.1) is a result of natural disturbances from beaver activity, which causes frequent ponding for long durations. This is considered a state and not a plant community phase of the reference state because the long duration would realistically be considered permanent. The nature of beaver and the particular laws regarding their control in Maine make the ponded state permanent. Beaver control has been on-going for multiple decades, but control has never been achieved. The hydrology is permanently altered to favor open areas of shrubs such as alder, grasses, and grass-like plants, such as tussock sedge. Yellow pond-lily (*Nuphar lutea* spp advena) was found at one sample site in a permanently ponded area.

A typical harvested state (3.1) consists of young red maple with a few gray, birch, balsam fir and sometimes black ash. Any larger trees remaining are of poor grade and some younger looking trees are actually older suppressed trees that may not respond to release. This state is usually harvested in the winter when the soil is frozen and is typically allowed to regenerate naturally back to the reference state over a long time period or may become a red maple swamp.

Reference, ponded, and harvested states may become infested with invasive plants such as purple loosestrife and Japanese knotweed. The flooded state (2.1) is particularly vulnerable to invasion from these two species. Brush management multiple times and planting of desirable native plants would be required to restore to a reference state.

A State and Transition Model for the Marine Terrace Depression Ecological Site (F144BY002ME) follows this narrative. Thorough descriptions of each state, transition, plant community, and pathway follow the model. Experts base this model on available experimental research, field observations, professional consensus, and interpretations. It is likely to change as knowledge increases.

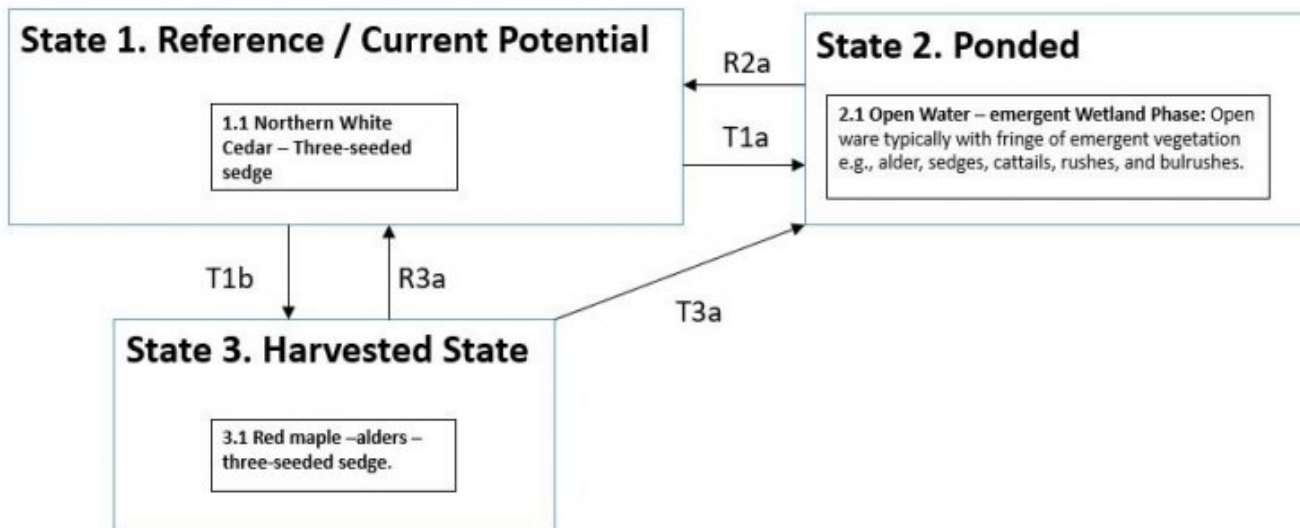
Plant communities will differ across the MLRA because of the naturally occurring variability in weather, soils, and aspect. The Reference Plant Community is not necessarily the management goal. The biological processes on this site are complex. Therefore, representative values are presented in a land management context. The species lists are representative and are not botanical descriptions of all species occurring, or potentially occurring, on this site. They are not intended to cover every situation or the full range of conditions, species, and responses for the site.

The following diagram suggests some pathways that the vegetation on this site might take. There may be other states not shown on the diagram. This information is intended to show what might happen in a given set of circumstances. It does not mean that this would happen the same way in every instance. Local professional

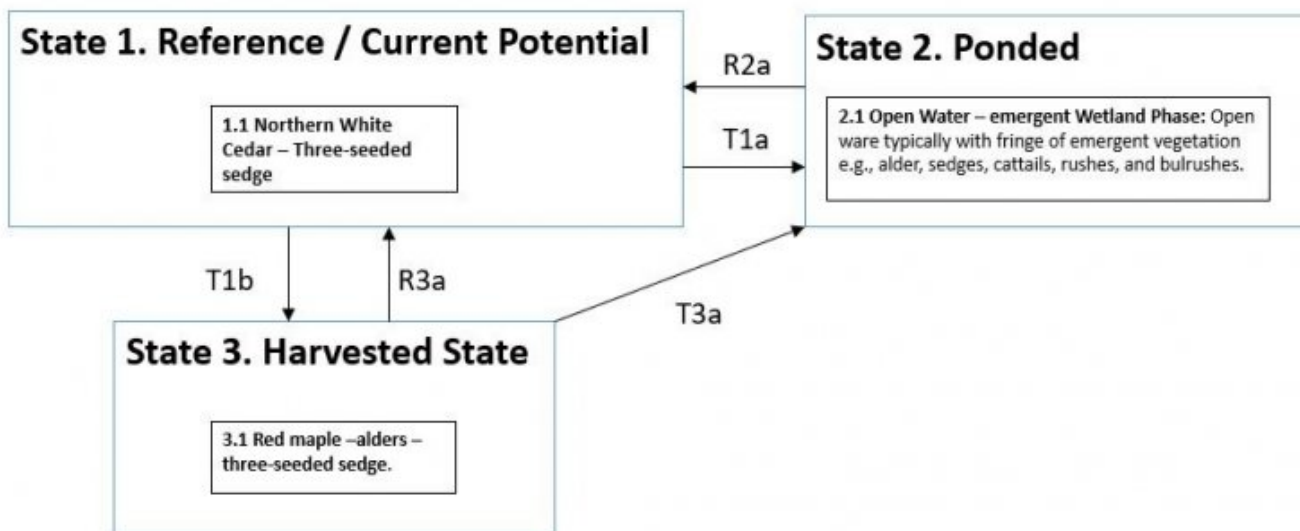
guidance should always be sought before pursuing a treatment scenario.

State and transition model

F144BY304ME – Wet Clay Flat



F144BY304ME – Wet Clay Flat



State 1
Reference State/Current Potential

The forested plant community phase (1.1) has a medium to dense canopy cover, averaging 85 percent and ranges from 75 to 95 percent. It consists of a stratified mixture of conifer and northern hardwood tree species. Northern white cedar (*Thuja occidentalis*) forms a canopy over other codominant or intermediate species such as red spruce (*Picea rubens*), except along the coast, red maple (*Acer rubrum*), gray birch (*Betula populifolia*), black ash (*Fraxinus nigra*), balsam fir (*Abies balsamea*), black spruce (*Picea mariana*), and tamarack (*Larix laricina*). Some sites have more red spruce or red maple depending on their previous forest management or location. The understory may be sparse due to a dense conifer overstory cover except for small open areas, less than a 0.1 of an acre, where a wide variety of forbs, ferns, and shrubs grow. Under the dense conifer overstory, only small scattered shade-tolerant and moisture-loving plants grow. Plants include balsam fir regeneration, a few sedges, and many species of feather-mosses and leafy liverworts. The moss grows over the mounds, on downed dead wood, and the bottoms of trees throughout this site. Due to the dense, shady, understory tall shrubs are almost non-existent. In the small open areas, taller shrubs, such as speckled alder (*Alnus incana*), are present along with wild sarsaparilla (*Aralia nudicaulis*) and dwarf red raspberry (*Rubus pubescens*). Clumps of cinnamon fern (*Osmunda cinnamomea*) and small patches of sensitive fern (*Onoclea sensibilis*) are also common on the mounds. Small forbs usually found on hummocks include maystar (*Trientalis borealis*), blue-bead lily (*Clintonia borealis*), and bunchberry (*Cornus canadensis*). Eastern poison-ivy may also be present on some sites and should be avoided because it can cause severe dermatitis. On one sample site, skunk cabbage (*Symplocarpus foetidus*) was abundant in the pools of water. Very few grass or grass-like plant species were found on this site. There were more sedges than grasses and both appeared in small clumps on mounds scattered throughout. Typical sedges include three-seeded sedge (*Carex trisperma*).

Community 1.1

Northern White Cedar - Three-seeded sedge

This is the reference community for the site. The description is based on historical descriptions, site index data, professional consensus of experienced ecologists, and analysis of field work. In reference condition this site is perceived to be a mixed conifer-hardwood forest. Due to the multiple (8) biophysical regions involved and the history of land use and management, a least disturbed climax state will be considered the reference state for this ESD. The least disturbed climax state is a mixed conifer-hardwood forest that has been harvested multiple times over the years. The reference plant community phase has a dominant tree community of northern red cedar or on some sites red spruce and/or red maple. Northern red cedar and red spruce are slower growing than red maple and where it has been heavily harvested, it has been shaded out by red maple. The intermediate canopy consists of red maple, gray birch, black ash, balsam fir, red and black spruce, and tamarack. Typical conifers are a mix of northern red cedar, spruce, tamarack and fir. Typical hardwoods are red maple, black ash, and a few birch species. Overstory canopy cover ranges from 75 to 95 percent. Because of the moderate to dense overstory, the understory consists of a few shade tolerant small shrubs, ferns and forbs such as three-seeded sedge. The ground surface is made up of pits and mounds with large patches of feather-mosses and leafy hornworts due to the moderate to dense shade and high moisture levels. There is a diverse and abundant amount of downed woody debris present. Hard and soft tree snags are typically present in abundance. The plant community can be restored from a harvest using appropriate brush management combined with either native regeneration, or if invasive species are a problem, a tree/shrub planting. It will be very difficult to restore a ponded state to a reference state because of the pervasive nature of beaver, but with removal of beaver dams and proper beaver control, sites may naturally return to the reference plant community over a long period of time.

State 2

Ponded State

The ponded state is a result of beaver activity. This state is frequently ponded for long durations. The description is based on historical descriptions, site index data, professional consensus of experienced ecologists, and analysis of field work. This state is perceived to be a mixture of shrubs, typically speckled alder (*Alnus incana*) and graminoids, such as tussock (upright) sedge (*Carex stricta*) with few if any mature trees because they have been drowned out or eaten by the beavers.

Community 2.1

2.1 Open Water – emergent Wetland Phase

This is the frequently ponded for long duration plant community phase. The description is based on historical

descriptions, site index data, professional consensus of experienced ecologists, and analysis of field work. This phase is perceived to be a mixture of shrubs and graminoids with few if any mature trees. All the plant species are hydrophytic.

State 3

Harvested state

The harvested state is quite common in Maine. Most harvesting is by an individual tree or group selection method in this MLRA and on this site. The reference forest has been harvested for the most desirable species, northern red cedar and spruce. The remaining forest stand consists of young red maple and gray birch with a few balsam fir, tamarack, and black ash. This state is most like the reference state in plant composition particularly in the understory if only small openings are created like for an individual tree selection harvest. Group selection harvests may make larger openings temporarily that will allow other species to grow for very short periods of time. If northern red cedar and red spruce are harvested in large quantities, the harvested state will become dominated by red maple and other faster growing species.

Community 3.1

Red Maple/Alder/Three-seeded sedge

The harvested state is the most common plant community phase of this ecological site in Maine. Most harvesting is by an individual tree or group selection method in this MLRA and on this site. The reference forest has been harvested for the most desirable species, northern red cedar and red spruce. The remaining forest stand consists of young red maple as the dominant species, or co-dominant with tamarack or black spruce. The lower overstory consists of red maple, balsam fir, gray birch, black ash, tamarack, black spruce, and northern white cedar. Eastern white pine may be present on mounds at the edge of the drier sites. This state is most like the reference state in plant composition particularly in the understory if only small openings are created like for an individual tree selection harvest. Group selection harvests may make larger openings temporarily that will allow other species to grow for very short periods of time. If northern red cedar and red spruce are harvested in large quantities, the overstory will become dominated by red maple and other faster growing species. The understory will contain more shrubs and forbs. Feather-mosses and leafy liverworts are still present in abundance on the pit and mound microrelief. Downed woody debris is still quite high in this plant community phase. Hard snag trees are more abundant than soft snag trees.

Transition T

State 1 to 2

Transition T1b

State 1 to 3

The reference state transitions to a harvested state by the removal of some or all desirable woody vegetation. Hydrology may be moderately to severely altered by the addition of woody debris or gravel in forest access trails and roads in narrow linear locations throughout the site if done at the wrong time of year or at inappropriate times, such as during or after heavy rainfalls.

Restoration pathway R2a

State 2 to 1

The ponded state may transition to a reference state by the elimination of beavers and their dams, and allowing the return after many years of normal hydrology that will favor trees. Tree and shrub planting might also be used to speed up the process.

Restoration pathway R3a

State 3 to 1

The harvested state may be restored to the reference state by natural regeneration over a period of time or the planting of desirable vegetation which may shorten the period of time to full canopy status. Invasive species establishment and wildlife damage to plants must be controlled in order to fully restore the site.

Restoration pathway T3a State 3 to 2

The harvested state may transition to a flooded state from the effects of beavers on the hydrology of a site. Beavers can cause a long term elevation of ponded water and the killing of nearby trees for food. This will eliminate trees and favor the growth of shrubs, forbs, and grasses.

Additional community tables

Inventory data references

Site Development and Testing Plan

Future work is needed, as described in a project plan, to validate the information presented in this provisional ecological site description. Future work includes field sampling, data collection and analysis by qualified vegetation ecologists and soil scientists. As warranted, annual reviews of the project plan can be conducted by the Ecological Site Technical Team. A final field review, peer review, quality control, and quality assurance reviews of the ESD are necessary to approve a final document.

Type locality

Location 1: Washington County, ME	
Latitude	44° 50' 38"
Longitude	67° 13' 3"
General legal description	DOI-USFWS Moosehorn National Wildlife Refuge, Edmonds Division

Other references

1. Barton, Andrew M., et.al. 2012. The Changing Nature of the Maine Woods. University of New Hampshire Press, Durham, NH.
2. Brinson, M.M. 1993. A hydrogeomorphic classification for wetlands, Technical Report WRP-DE-4, U.S. Army Corps of Engineers Waterways Experiment Station, Vicksburg, MS.
3. Bryan, Robert R. April 2004. Focus Species Forestry: A Guide to Integrating Timber and Biodiversity Management in Maine. Working Draft. Maine Audubon, Falmouth, ME.
4. Calhoun, Aram. 1999. Maine Citizen's Guide to Locating and Documenting Vernal Pools, revised edition. Maine Audubon Society. Falmouth, ME.
5. Cameron, A. W. 1958. Mammals of the islands in the Gulf of St. Lawrence. National Museum of Canada Bulletin. No. 154: 1-165.
6. Cowardin, L. M., et al. United States, Fish and Wildlife Service. 1979. FWS/OBS-79/31. Classification of Wetlands and Deepwater Habitats in the United States, (FGDC-STD-004)
7. DeGraaf and Yamasaki. 2000. New England Wildlife: Habitat, Natural History, and Distribution. University Press of New England.
8. DeGraaf, et. al. 2007. Technical guide to forest wildlife habitat management in New England. University of Vermont Press.
9. Eschtruth, E.C. and J.J. Battles. 2008. Acceleration of exotic plant invasion in a forested ecosystem by a generalist herbivore. Conservation Biology 23: 388-399.
10. Flatebo, Gro, C.R. Foss, and S.K. Pelletier. 1999. Biodiversity in the Forests of Maine: Guidelines for Land Management. UCME Bulletin #7147. University of Maine Cooperative Extension, Orono, ME.

11. Gawler, Susan and Andy Cutko. 2010. *Natural Landscapes of Maine: A Guide to Natural Communities and Ecosystems*. Department of Conservation, Maine Natural Areas Program, Augusta, ME.
12. Haines, Arthur. 2011. *New England Wildflower Society's flora novae angliae, A manual for the identification of native and naturalized higher vascular plants of New England*. Yale University Press, New Haven, CT.
13. Hobson, Scott S., J.S. Barclay, and S.H. Broderick. 1993. *Enhancing wildlife habitats: A practical guide for forest landowners*. Northeast Forest Resources Extension Council Series. NRAES-64. Northeast Regional Agricultural Engineering Service, Cooperative Extension, Ithaca, NY.
14. Johnston, D. W. High density of birds breeding in a modified deciduous forest. *Wilson Bulletin*. 82: 79-82; 1970.
15. Kelly, G. M. 1977. *Fisher (Marfes pennanti)*. Biology in the White Mountains National Forest and adjacent areas. PhD dissertation. University of Massachusetts. Amherst, MA.
16. Kirkland, G. L., Jr. 1978. Initial responses of small mammals to clearcutting of Pennsylvania hardwood forests. *Proceedings Pennsylvania Academy of Science*. 52(1): 21-23.
17. Llewellyn, L. M.; Dale, F. H. 1964. Notes on the ecology of the opossum in Maryland. *Journal of Mammalogy*. 45(1): 113-122.
18. Lovejoy, D. A. 1975. The effect of logging on small mammal populations in New England northern hardwoods. *University of Connecticut Occasional Papers. Biological Science Series*. 2(17): 269-291.
19. Maine Forest Service. 2008. *Forest Trees of Maine, Centennial Edition*. Department of Conservation, Augusta, ME.
20. Maine Forest Service. January 11, 2013. *2011 Wood Processor Report, including Imports and Export Information*. Department of Agriculture, Conservation and Forestry, Maine Forest Service. Augusta, ME.
21. Maine Forest Service. November 15, 2012. *2011 Stumpage Prices by Maine County/Unit*. Department of Agriculture, Conservation and Forestry, Maine Forest Service. Augusta, ME.
22. Maine Forest Service. January 7, 2013. *2011 Silvicultural Activities Report, including Annual Report on Clearcutting and Precommercial Activities*. Department of Agriculture, Conservation and Forestry, Maine Forest Service. Augusta, ME.
23. Martin, Alexander C., H.S. Zim, and A.L. Nelson. 1951. *American Wildlife & Plants: A Guide to Wildlife Food Habits. The use of trees, shrubs, weeds, and herbs by birds and mammals of the United States*. Dover Publications. New York, NY.
24. McShea, W.J. 1997. *The Science of Overabundance: Deer Ecology and Population Management*. Washington, DC: Smithsonian Institution Press. pp. 201–223, 249–279. ISBN 1-58834-062-7.
25. Minnesota Dept. of Natural Resources. 2007. *A handbook for collecting vegetation plot data in Minnesota: The relevé method*. Minnesota County Biological Survey, Minnesota Natural Heritage and Nongame Research Program, and the Ecological Land Classification Program. Biological Report 92. St. Paul, Minnesota.
26. Mitchell, J. C., A. R. Breisch, and K. A. Buhlmann. 2006. *Habitat Management Guidelines for Amphibians and Reptiles of the Northeastern United States*. Partners in Amphibian and Reptile Conservation, Technical Publication HMG-3. Montgomery, Alabama.
27. NatureServe. 2003. *Ecological Systems of the United States: A Working Classification of U.S. Terrestrial Systems*.
28. Short, Henry L., et. al. 1997. *New England Wildlife: A Model for Ecosystem Management – ECOSEARCH (Version 1)*. GTR-NE-283. USDA FS Northeastern Research Station. Delaware, OH.

29. Smith, David M. 1962. *The Practice of Silviculture*. John Wiley & Sons, Inc. New York, NY.
30. Thompson, Elizabeth H. and Eric R. Sorenson. 2000. *Wetland, Woodland, Wildland: A Guide to the Natural Communities of Vermont*. Vermont Department of Fish and Wildlife and the Nature Conservancy. University Press of New England, Hanover, NH.
31. U.S. Army Corps of Engineers. January 1987. *Corps of Engineers Wetlands Delineation Manual*. Wetlands Research Program Technical Report Y-87-1 (<http://el.erdc.usace.army.mil/elpubs/pdf/wlman87.pdf>). Waterways Experiment Station, 3909 Halls Ferry Road, Vicksburg, MS.
32. U.S. Department of Agriculture, Forest Service. December 2010. *Maine's Forests 2008*, Resource Bulletin NRS-48.
33. U.S. Department of Agriculture, Natural Resources Conservation Service. 2008. *Hydrogeomorphic wetland classification system: an overview and modification to better meet the needs of the Natural Resources Conservation Service*. Technical Note No. 190-8-76. Washington, DC.
34. U.S. Department of Agriculture, Natural Resources Conservation Service. 2013. *Map Based Climate Information*. National Water and Climate Center (<http://www.wcc.nrcs.usda.gov/climate/>, July 2013)
35. U.S. Department of Agriculture, Natural Resources Conservation Service. November 2010. *National Food Security Act Manual*, Fifth Edition.
36. U.S. Department of Agriculture, Natural Resources Conservation Service. 1998. *National Forestry Manual*.
37. U.S. Department of Agriculture, Natural Resources Conservation Service. 2000. *National Forestry Handbook*.
38. U.S. Department of Agriculture, Natural Resources Conservation Service. 2013. *National Soil Information System*. Accessed July 2014. <http://soils.usda.gov/technical/nasis/>
39. U.S. Department of Agriculture, Natural Resources Conservation Service. 2013. *The PLANTS Database*. Accessed July 2014. <http://plants.usda.gov/>. National Plant Data Team, Greensboro, NC.

Contributors

Nick Butler
Tony Jenkins
David Turcotte
David Wilkinson
Kindsey Hodgman
Jamin Johanson
Sally Butler
Matt Dorman

Approval

Nels Barrett, 6/29/2020

Acknowledgments

Nels Barrett, Ph.D.

Rangeland health reference sheet

Interpreting Indicators of Rangeland Health is a qualitative assessment protocol used to determine ecosystem condition based on benchmark characteristics described in the Reference Sheet. A suite of 17 (or more) indicators

are typically considered in an assessment. The ecological site(s) representative of an assessment location must be known prior to applying the protocol and must be verified based on soils and climate. Current plant community cannot be used to identify the ecological site.

Author(s)/participant(s)	
Contact for lead author	
Date	05/18/2024
Approved by	Nels Barrett
Approval date	
Composition (Indicators 10 and 12) based on	Annual Production

Indicators

1. **Number and extent of rills:**

2. **Presence of water flow patterns:**

3. **Number and height of erosional pedestals or terracettes:**

4. **Bare ground from Ecological Site Description or other studies (rock, litter, lichen, moss, plant canopy are not bare ground):**

5. **Number of gullies and erosion associated with gullies:**

6. **Extent of wind scoured, blowouts and/or depositional areas:**

7. **Amount of litter movement (describe size and distance expected to travel):**

8. **Soil surface (top few mm) resistance to erosion (stability values are averages - most sites will show a range of values):**

9. **Soil surface structure and SOM content (include type of structure and A-horizon color and thickness):**

10. **Effect of community phase composition (relative proportion of different functional groups) and spatial distribution on infiltration and runoff:**

11. **Presence and thickness of compaction layer (usually none; describe soil profile features which may be mistaken for compaction on this site):**

12. **Functional/Structural Groups (list in order of descending dominance by above-ground annual-production or live foliar cover using symbols: >>, >, = to indicate much greater than, greater than, and equal to):**

Dominant:

Sub-dominant:

Other:

Additional:

13. **Amount of plant mortality and decadence (include which functional groups are expected to show mortality or decadence):**

14. **Average percent litter cover (%) and depth (in):**

15. **Expected annual annual-production (this is TOTAL above-ground annual-production, not just forage annual-production):**

16. **Potential invasive (including noxious) species (native and non-native). List species which BOTH characterize degraded states and have the potential to become a dominant or co-dominant species on the ecological site if their future establishment and growth is not actively controlled by management interventions. Species that become dominant for only one to several years (e.g., short-term response to drought or wildfire) are not invasive plants. Note that unlike other indicators, we are describing what is NOT expected in the reference state for the ecological site:**

17. **Perennial plant reproductive capability:**
